

Sentence Skills section contains 20 multiple choice questions. You will be asked to correct a sentence by choosing a word or phrase to substitute for the underlined portion.

### **Math Section**

The Mathematics test has three sections. Based on your experience with math (as determined by background questions), you will probably only take two of the three sections. A calculator is not allowed.

***The Arithmetic test has a total of 17 questions that measure your skills in:***

1. Operations with whole numbers and fractions
2. Operations with decimals and percents
3. Applications and problem solving

***The Elementary algebra test has a total of 12 questions that measure:***

1. Operations with integers and rational numbers
2. Operations with algebraic expressions
3. Equations solving, inequalities, and word problems

***The College-Level Mathematics Test assesses proficiency from intermediate algebra through pre-calculus. There are a total of 20 questions.***

***The categories tested are:***

1. Algebraic operations
2. Solutions of equations and inequalities
3. Coordinate geometry
4. Application and other algebra topics
5. Functions and trigonometry

## **THEA**

THEA is a paper and pencil test that allows a maximum testing time of five hours. The results are available about five working days after testing. The retest policy, set by the state, allows a student to retest every 30 days.

The Reading Section consists of approximately 40 multiple choice questions matched to about seven

reading selections of 300 to 750 words each. The selections represent a variety of subject areas and are similar to reading materials that students are likely to encounter during their first year of college.

The Mathematics Section consists of approximately 50 multiple-choice questions covering four general areas: fundamental mathematics, algebra, geometry, and problem solving. The test questions focus on a student's ability to perform mathematical operations and solve problems. Appropriate formulas will be provided to help students perform some of the calculations required by the test questions. A simple four-function calculator is allowed.

The Writing Section consists of two subsections: a writing sample subsection and a multiple-choice subsection. The writing sample subsection requires students to demonstrate their ability to communicate effectively in writing on a given topic. The multiple-choice subsection includes approximately 40 questions assessing students' ability to recognize various elements of effective writing.

THEA is given about 1 - 2 times each month. To check the schedule and to get additional information about the tests visit our web site: [www.lee.edu/counseling](http://www.lee.edu/counseling).

## **Educational Opportunity Center**

Adults needing more information about testing or going back to college may schedule an appointment at the Lee College Educational Opportunity Center 832.556.4505 or [www.lee.edu/EOC](http://www.lee.edu/EOC).

## **Be Prepared:** *A Guide to College Placement Tests*



## What Required Tests Do I Need?

As part of the Texas Success Initiative, many first-time-in-college students seeking a degree must test to show college readiness in the areas of reading, writing and math. Lee College offers two tests to meet the state requirement – THEA and Accuplacer. If you have questions on which test is best for you, please go by the Counseling Center to visit with a counselor or advisor.

Students seeking a certificate may also need placement scores. For most certificates, only a reading score is required and is, usually, satisfied by the reading portion of the Accuplacer test.

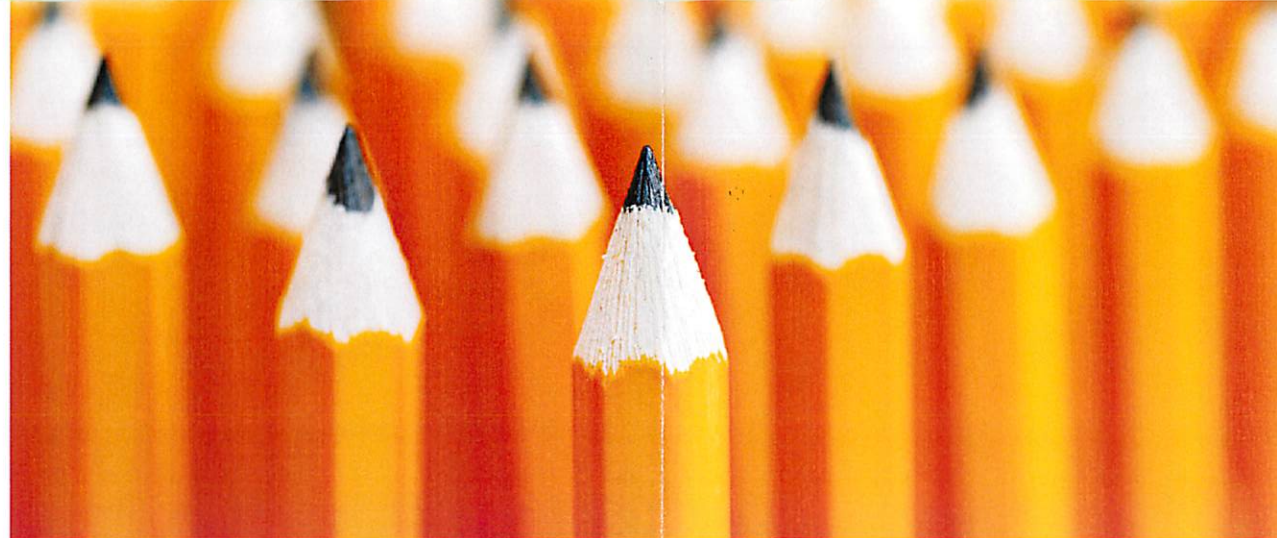
THEA and Accuplacer are placement tests that are used at Lee College to ensure success in college coursework. These assessments are designed to identify strengths and weaknesses before students enroll in classes. As students are placed into appropriate classes, they will be able to build stronger foundations for success in college.

It is not uncommon for students to test into developmental classes. Of students who took Accuplacer, at least 73% tested into developmental mathematics classes, at least 55% tested into developmental writing classes and at least 61% tested into developmental reading classes.

However, preparation can help you improve your scores and possibly reduce the number of developmental courses you need to take. Reviewing basic concepts in reading, grammar, arithmetic and algebra before taking either the Accuplacer or THEA may result in a better score on any of the tests.

### SmarterMeasure

Starting fall 2012, all first-time-in-college students will be required to complete SmarterMeasure (<http://lee.readi.info/>), a web-based assessment that measures learner readiness for succeeding in an online learning program. Taking about 30 minutes



to complete, SmarterMeasure is an indicator of the degree to which learning in a technology-rich environment will be a good fit for you to increase your chances for success. To take the assessment, log-in with the username "leecollege" and the password "student."

### Sources for Review on Reading, Writing and Mathematics Skills

#### Web Sites

<http://professionals.collegeboard.com/profdownload/accuplacer-sample-questions-for-students.pdf>  
[www.thea.nesinc.com/practice.htm](http://www.thea.nesinc.com/practice.htm)  
[www.math.com](http://www.math.com)  
<http://wcb.neit.edu/asc/arithprc.htm>  
<http://wcb.neit.edu/asc/algeprc1.htm>  
<http://oaklandcc.edu/MathTest/Practest.pdf>  
<http://oaklandcc.edu/MathTest/PractestAns.pdf>  
<http://wcb.neit.edu/asc/readprc1.htm>  
<http://wcb.neit.edu/asc/senskl2.htm>

#### Publications

Preparation manuals on THEA, SAT, ACT or GED is available at most libraries and bookstores. Any of these will help you prepare for the Accuplacer or THEA.

### Accuplacer

Accuplacer is a computer-based test. Minimal computer skills are needed to complete the test and a proctor will always be present to assist you. The Accuplacer is available most days the Counseling Center is open and the results are automatic. If taking all three sections (i.e., reading, writing, and math), the testing will take place on two different days – typically one day for the reading and writing and another day for the math. The student may retest one time during a registration period for an additional cost to the student. Additional retesting will require permission from the Lead Counselor. More information on current testing fees and scheduling can be found at the Counseling Center webpage ([www.lee.edu/counseling](http://www.lee.edu/counseling)).

#### Reading Comprehension

The Reading Comprehension test contains 20 questions. Questions are answered after reading passages of various lengths.

#### Writing Section

The Writing Section consists of two sections. The Writing Sample section requires students to demonstrate their communication skills by writing a multi-paragraph essay on a given topic. The