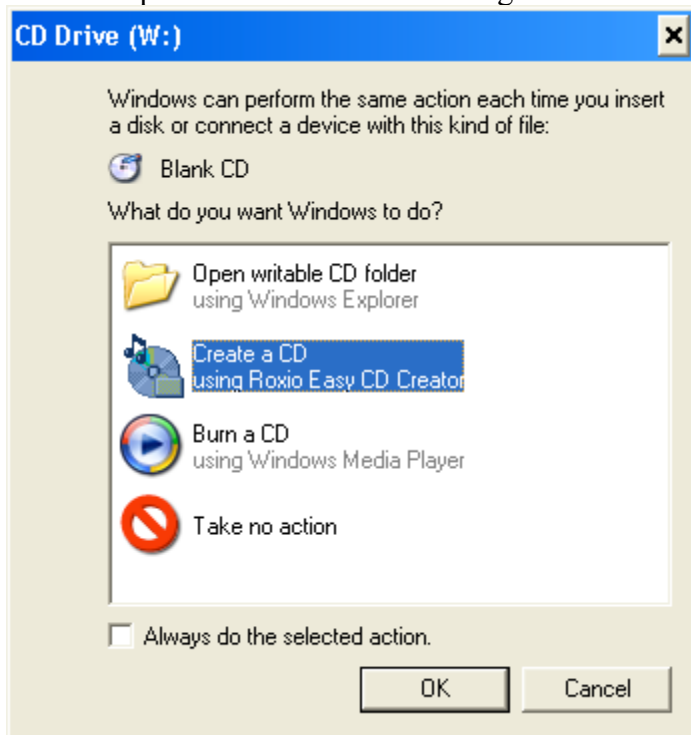
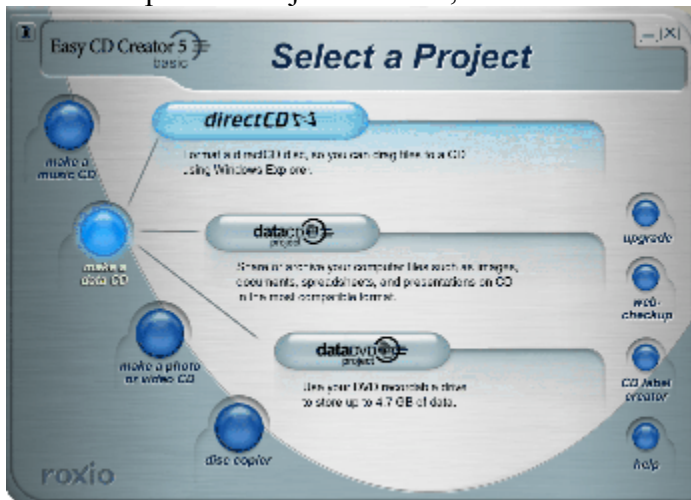


Insert a blank CD-R or CD-RW it should bring up an option window like what is below, choose “Open writable CD folder using “Create a CD”

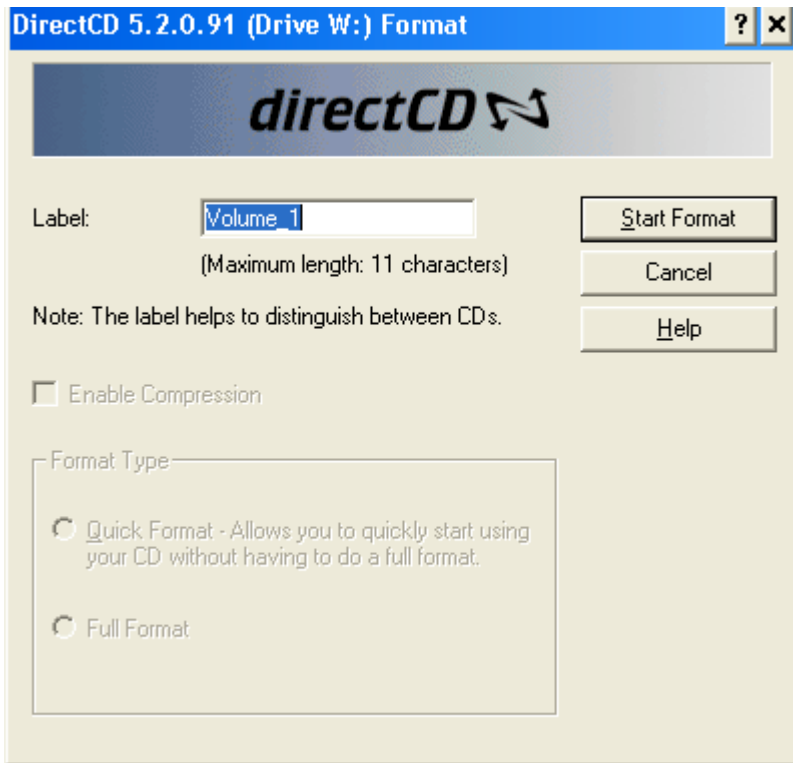


This will open the Project Selector, and choose “directCD” option



Then choose the “Format” option





After it gets done formatting you can Copy and Paste your files on this CD through Windows Explorer or drag your files to your CD ROM drive. When you are done simply eject your CD this will bring up the windows below. If you plan on writing more files to this CD later then choose the first option. If not and you are done writing to the CD choose the last option.

