

Table & Chart Guide

Table/Chart	Contents	Campus	Page
Table 1	Area Grade Summary By Subject Area	Baytown	2
Table 2	Area Grade Summary By Average GPA	Baytown	3
Table 3	Area Grade Summary By Completion Percentage	Baytown	4
Table 4/Chart 1	Three Year Comparison By Completion Percentage & GPA	Baytown	5
Table 5	Three Year Comparison of GPA By Subject Area	Baytown	6
Table 6	Three Year Comparison of Completion Percentages By Subject Area	Baytown	7
Table 7/Chart 2	Developmental Education Completion Percentage By Subject Area	Baytown	8
Table 8	Area Grade Summary By Subject Area	Huntsville	9
Table 9	Area Grade Summary By Average GPA	Huntsville	10
Table 10	Area Grade Summary By Completion Percentage	Huntsville	11
Table 11/Chart 3	Three Year Comparison By Completion Percentage & GPA	Huntsville	12
Table 12	Three Year Comparison of GPA By Subject Area	Huntsville	13
Table 13	Three Year Comparison of Completion Percentages By Subject Area	Huntsville	14
Table 14/Chart 4	Developmental Education Completion Percentage By Area	Huntsville	15

Area Grade Summary By Subject Area
Lee College - Baytown Campus
Fall 2006 Grade Distribution Summary
Table 1

Subject Area	Average GPA	Percent of Completers	Total Headcount	Number of Sections
ACCT	2.7	64.6%	113	8
ACNT	3.2	86.5%	89	7
AIRP	3.2	89.7%	29	7
ARCE	4.0	75.0%	4	1
ARCH	2.9	58.3%	72	5
ARTC	3.1	75.0%	12	2
ARTS	3.2	75.9%	261	32
BCIS	2.5	73.2%	123	5
BIBL	0.0	0.0%	3	1
BIOL	2.5	69.0%	817	43
BMGT	3.1	91.3%	115	10
BUSI	2.3	87.8%	180	10
CHEM	2.3	77.5%	129	9
CJSA	0.0	0.0%	1	1
COMM	3.3	74.2%	31	6
COSC	2.6	71.4%	213	11
CPMT	3.0	86.3%	168	10
CRIJ	3.0	73.3%	135	9
CSME	3.1	72.7%	289	26
DAAC	3.1	61.2%	134	11
DFTG	3.3	79.5%	259	22
DRAM	3.4	63.2%	117	9
ECON	2.4	72.1%	147	7
EDUC	3.5	72.2%	36	4
ELPT	2.8	71.9%	249	13
ENGL	2.3	74.9%	1129	77
ENVR	2.8	74.4%	43	3
GEOG	2.5	91.3%	23	1
GEOL	2.9	72.9%	96	4
GOVT	2.2	77.6%	599	21
HIST	2.1	72.4%	646	27
HITT	3.0	76.0%	329	20
HRPO	1.9	85.5%	55	3
HUMA	2.6	73.4%	218	17
IMED	3.2	75.0%	8	1
INTC	3.3	75.0%	228	14
ITCC	3.9	69.0%	42	8
ITNW	2.1	88.5%	26	2
ITSC	2.8	80.8%	302	17
ITSE	2.5	20.0%	10	1
ITSW	4.0	66.7%	3	1
KINE	3.4	81.4%	591	68
LGLA	3.5	91.3%	92	10
MATH	2.3	61.8%	395	33
MCHN	3.5	68.3%	60	8
MRKG	3.5	88.2%	17	2
MRMT	3.2	79.4%	34	5
MUAP	3.8	83.1%	89	44
MUEN	3.8	87.9%	58	12
MUSI	2.7	79.3%	232	18
NDTE	3.2	84.6%	13	1
OSHT	3.3	66.7%	51	3
PFPB	3.4	73.5%	151	11
PHIL	2.4	71.4%	63	5
PHYS	2.8	88.7%	71	5
POFI	2.6	78.9%	142	12
POFT	3.0	82.8%	274	25
PSYC	2.4	82.1%	524	24
PTAC	2.5	86.8%	523	24
RNSG	2.5	87.5%	1120	53
SCIT	2.4	90.8%	87	3
SGNL	2.7	91.5%	47	4
SOCI	2.6	81.1%	196	12
SOCW	2.4	88.9%	9	1
SPAN	2.6	69.9%	83	9
SPCH	2.6	81.0%	458	23
SPNL	2.8	87.0%	77	4
TECA	3.4	82.3%	130	10
TECM	3.0	81.5%	130	6
VNSG	3.0	93.9%	544	21
WLDG	3.4	77.1%	223	22
Grand Total	2.7	78.3%	13,967	964

Area Grade Summary By Average GPA
Lee College - Baytown Campus
Fall 2006 Grade Distribution Summary
Table 2

Subject Area	Average GPA	Percent of Completers	Total Headcount	Number of Sections
ARCE	4.0	75.0%	4	1
ITSW	4.0	66.7%	3	1
ITCC	3.9	69.0%	42	8
MUAP	3.8	83.1%	89	44
MUEN	3.8	87.9%	58	12
EDUC	3.5	72.2%	36	4
LGLA	3.5	91.3%	92	10
MCHN	3.5	68.3%	60	8
MRKG	3.5	88.2%	17	2
DRAM	3.4	63.2%	117	9
KINE	3.4	81.4%	591	68
PFPB	3.4	73.5%	151	11
TECA	3.4	82.3%	130	10
WLDG	3.4	77.1%	223	22
COMM	3.3	74.2%	31	6
DFTG	3.3	79.5%	259	22
INTC	3.3	75.0%	228	14
OSHT	3.3	66.7%	51	3
ACNT	3.2	86.5%	89	7
AIRP	3.2	89.7%	29	7
ARTS	3.2	75.9%	261	32
IMED	3.2	75.0%	8	1
MRMT	3.2	79.4%	34	5
NDTE	3.2	84.6%	13	1
ARTC	3.1	75.0%	12	2
BMGT	3.1	91.3%	115	10
CSME	3.1	72.7%	289	26
DAAC	3.1	61.2%	134	11
CPMT	3.0	86.3%	168	10
CRIJ	3.0	73.3%	135	9
HITT	3.0	76.0%	329	20
POFT	3.0	82.8%	274	25
TECM	3.0	81.5%	130	6
VNSG	3.0	93.9%	544	21
ARCH	2.9	58.3%	72	5
GEOG	2.9	72.9%	96	4
ELPT	2.8	71.9%	249	13
ENVR	2.8	74.4%	43	3
ITSC	2.8	80.8%	302	17
PHYS	2.8	88.7%	71	5
SPNL	2.8	87.0%	77	4
ACCT	2.7	64.6%	113	8
MUSI	2.7	79.3%	232	18
SGNL	2.7	91.5%	47	4
COSC	2.6	71.4%	213	11
HUMA	2.6	73.4%	218	17
POFI	2.6	78.9%	142	12
SOCI	2.6	81.1%	196	12
SPAN	2.6	69.9%	83	9
SPCH	2.6	81.0%	458	23
BCIS	2.5	73.2%	123	5
BIOL	2.5	69.0%	817	43
GEOG	2.5	91.3%	23	1
ITSE	2.5	20.0%	10	1
PTAC	2.5	86.8%	523	24
RNSG	2.5	87.5%	1120	53
ECON	2.4	72.1%	147	7
PHIL	2.4	71.4%	63	5
PSYC	2.4	82.1%	524	24
SCIT	2.4	90.8%	87	3
SOCW	2.4	88.9%	9	1
BUSI	2.3	87.8%	180	10
CHEM	2.3	77.5%	129	9
ENGL	2.3	74.9%	1129	77
MATH	2.3	61.8%	395	33
GOVT	2.2	77.6%	599	21
HIST	2.1	72.4%	646	27
ITNW	2.1	88.5%	26	2
HRPO	1.9	85.5%	55	3
BIBL	0.0	0.0%	3	1
CJSA	0.0	0.0%	1	1
Grand Total	2.7	78.3%	13,967	964

Area Grade Summary By Completion Percentage
Lee College - Baytown Campus
Fall 2006 Grade Distribution Summary
Table 3

Subject Area	Average GPA	Percent of Completers	Total Headcount	Number of Sections
VNSG	3.0	93.9%	544	21
SGNL	2.7	91.5%	47	4
BMGT	3.1	91.3%	115	10
GEOG	2.5	91.3%	23	1
LGLA	3.5	91.3%	92	10
SCIT	2.4	90.8%	87	3
AIRP	3.2	89.7%	29	7
SOCW	2.4	88.9%	9	1
PHYS	2.8	88.7%	71	5
ITNW	2.1	88.5%	26	2
MRKG	3.5	88.2%	17	2
MUEN	3.8	87.9%	58	12
BUSI	2.3	87.8%	180	10
RNSG	2.5	87.5%	1120	53
SPNL	2.8	87.0%	77	4
PTAC	2.5	86.8%	523	24
ACNT	3.2	86.5%	89	7
CPMT	3.0	86.3%	168	10
HRPO	1.9	85.5%	55	3
NDTE	3.2	84.6%	13	1
MUAP	3.8	83.1%	89	44
POFT	3.0	82.8%	274	25
TECA	3.4	82.3%	130	10
PSYC	2.4	82.1%	524	24
TECM	3.0	81.5%	130	6
KINE	3.4	81.4%	591	68
SOCI	2.6	81.1%	196	12
SPCH	2.6	81.0%	458	23
ITSC	2.8	80.8%	302	17
DFTG	3.3	79.5%	259	22
MRMT	3.2	79.4%	34	5
MUSI	2.7	79.3%	232	18
POFI	2.6	78.9%	142	12
GOVT	2.2	77.6%	599	21
CHEM	2.3	77.5%	129	9
WLDG	3.4	77.1%	223	22
HITT	3.0	76.0%	329	20
ARTS	3.2	75.9%	261	32
ARCE	4.0	75.0%	4	1
ARTC	3.1	75.0%	12	2
IMED	3.2	75.0%	8	1
INTC	3.3	75.0%	228	14
ENGL	2.3	74.9%	1129	77
ENVR	2.8	74.4%	43	3
COMM	3.3	74.2%	31	6
PFPB	3.4	73.5%	151	11
HUMA	2.6	73.4%	218	17
CRIJ	3.0	73.3%	135	9
BCIS	2.5	73.2%	123	5
GEOL	2.9	72.9%	96	4
CSME	3.1	72.7%	289	26
HIST	2.1	72.4%	646	27
EDUC	3.5	72.2%	36	4
ECON	2.4	72.1%	147	7
ELPT	2.8	71.9%	249	13
COSC	2.6	71.4%	213	11
PHIL	2.4	71.4%	63	5
SPAN	2.6	69.9%	83	9
BIOL	2.5	69.0%	817	43
ITCC	3.9	69.0%	42	8
MCHN	3.5	68.3%	60	8
ITSW	4.0	66.7%	3	1
OSHT	3.3	66.7%	51	3
ACCT	2.7	64.6%	113	8
DRAM	3.4	63.2%	117	9
MATH	2.3	61.8%	395	33
DAAC	3.1	61.2%	134	11
ARCH	2.9	58.3%	72	5
ITSE	2.5	20.0%	10	1
BIBL	0.0	0.0%	3	1
CJSA	0.0	0.0%	1	1
Grand Total	2.7	78.3%	13,967	964

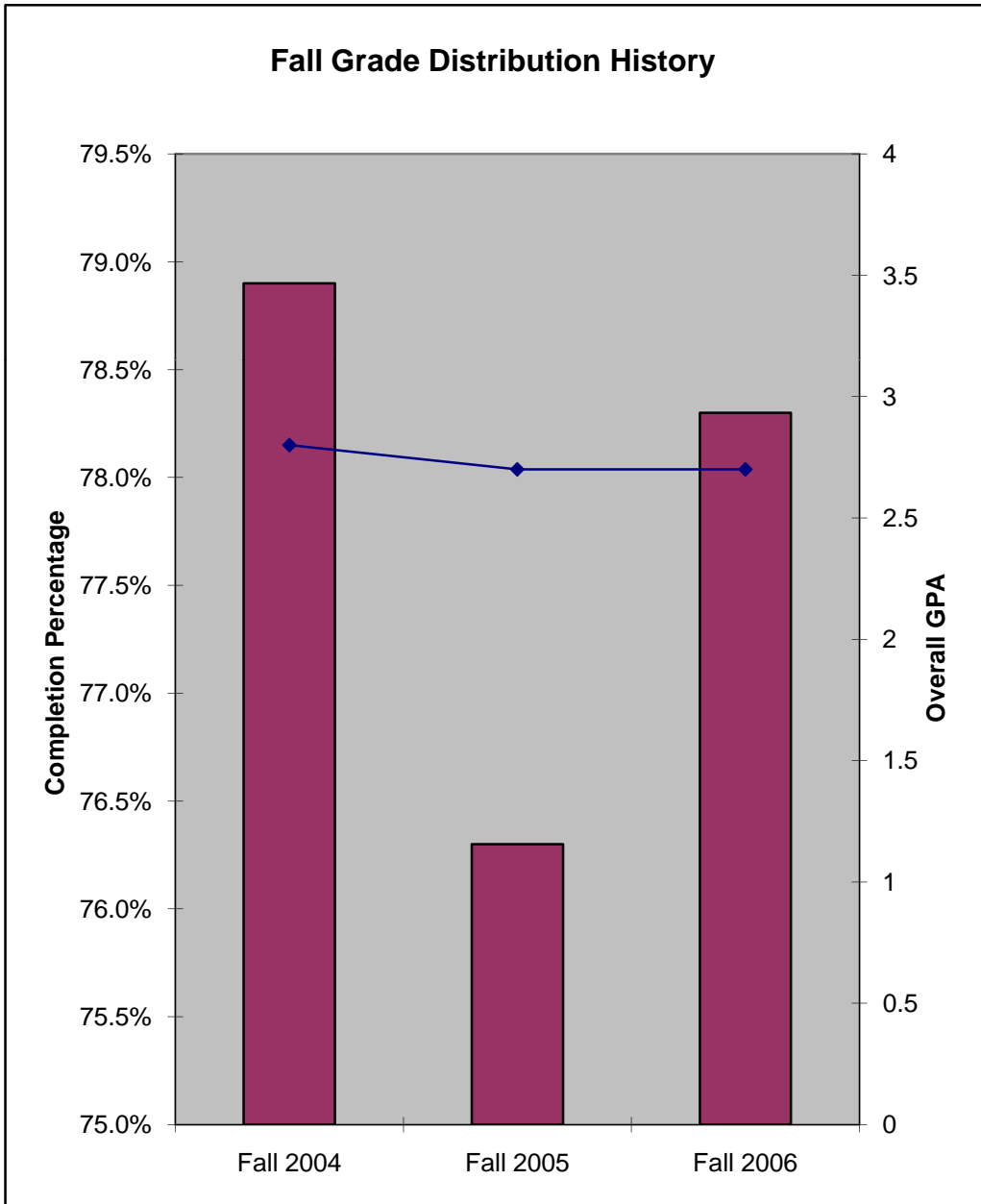
Three Year Comparison By Completion Percentage & GPA

Lee College - Baytown Campus

Fall Grade Distribution History

Table 4/Chart 1

	Completion Percentage	GPA
Fall 2004	78.9%	2.8
Fall 2005	76.3%	2.7
Fall 2006	78.3%	2.7



Three Year Comparison of GPA By Subject Area
Lee College - Baytown Campus
Fall Grade Distribution History
Table 5

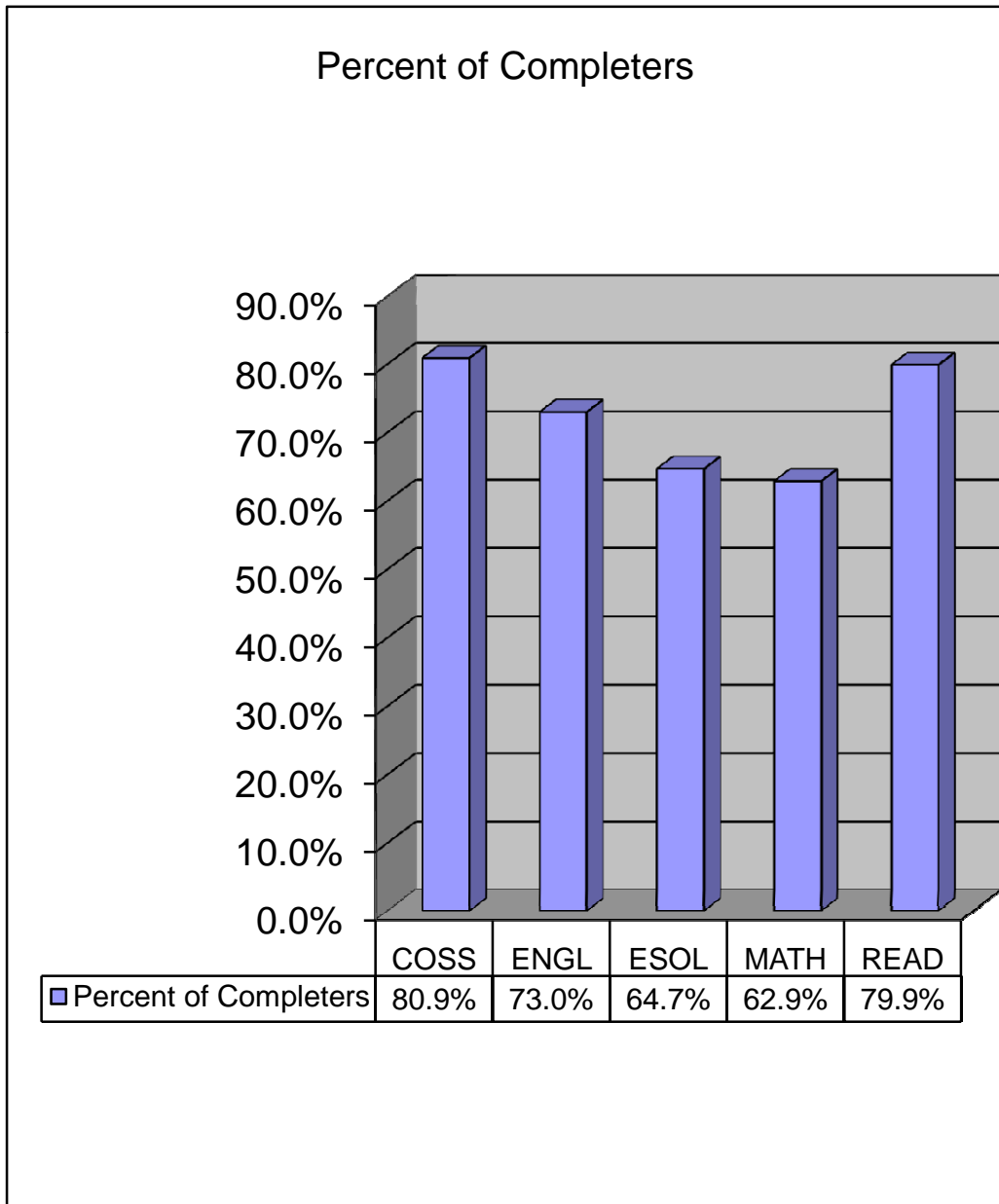
Subject Area	Fall 2006 Average GPA	Fall 2005 Average GPA	1 Yr. Change	Fall 2004 Average GPA	2 Yr. Change
ACCT	2.7	2.3	0.4	2.4	0.3
ACNT	3.2	3.1	0.1	2.9	0.3
AIRP	3.2	3.2		3.3	-0.1
ANTH				2.4	-2.4
ARCE	4.0		4.0		4.0
ARCH	2.9	2.6	0.3	3.4	-0.5
ARTC	3.1	2.9	0.2	4.0	-0.9
ARTS	3.2	2.8	0.4	3.4	-0.2
BCIS	2.5	2.6	-0.1	3.1	-0.6
BIBL	0.0	3.0	-3.0	3.0	-3.0
BIOL	2.5	2.7	-0.2	2.5	
BMGT	3.1	2.6	0.5	2.7	0.4
BUSI	2.3	2.6	-0.3	2.3	0.0
CHEM	2.3	2.8	-0.5	3.0	-0.7
CJSA	0.0	3.0	-3.0		
COMM	3.3	2.7	0.6	2.7	0.6
COSC	2.6	2.8	-0.2	2.6	
CPMT	3.0	3.3	-0.3	3.1	-0.1
CRIJ	3.0	2.8	0.2	2.9	0.1
CSME	3.1	2.9	0.2	2.8	0.3
DAAC	3.1	2.9	0.2	3.2	-0.1
DFTG	3.3	3.3		3.1	0.2
DRAM	3.4	2.9	0.5	3.5	-0.1
ECON	2.4	2.5	-0.1	3.0	-0.6
EDUC	3.5	3.3	0.2	3.1	0.4
ELPT	2.8	3.0	-0.2	3.3	-0.5
EMSP				2.8	-2.8
ENGL	2.3	2.4	-0.1	2.4	-0.1
ENVR	2.8	2.8		3.0	-0.2
GEOG	2.5		2.5	2.6	-0.1
GEOI	2.9	2.7	0.2	2.5	0.4
GOVT	2.2	2.2		2.5	-0.3
HART				2.9	-2.9
HIST	2.1	2.3	-0.2	2.3	-0.2
HITT	3.0	3.2	-0.2	3.2	-0.2
HRPO	1.9	3.0	-1.1	2.4	-0.5
HUMA	2.6	2.6		2.8	-0.2
IMED	3.2		3.2	3.6	-0.4
INTC	3.3	2.8	0.5	2.9	0.4
ITCC	3.9	3.7	0.2	3.7	0.2
ITNW	2.1		2.1	3.1	-1.0
ITSC	2.8	2.7	0.1	2.9	-0.1
ITSE	2.5	2.2	0.3	2.8	-0.3
ITSW	4.0		4.0	3.0	1.0
KINE	3.4	3.3	0.1	3.2	0.2
LGLA	3.5	3.5		3.3	0.2
MATH	2.3	2.4	-0.1	2.4	-0.1
MCHN	3.5	3.1	0.4	3.4	0.1
MRKG	3.5	2.6	0.9	3.1	0.4
MRMT	3.2	3.3	-0.1	3.2	
MUAP	3.8	3.8		3.6	0.2
MUEN	3.8	3.8		3.8	
MUSI	2.7	2.9	-0.2	3.1	-0.4
NDTE	3.2	4.0	-0.8	3.7	-0.5
OSHT	3.3		3.3		3.3
PFPB	3.4	3.1	0.3	3.7	-0.3
PHIL	2.4	2.4		2.2	0.2
PHYS	2.8	3.1	-0.3	3.0	-0.2
POFI	2.6	2.9	-0.3	3.0	-0.4
POFT	3.0	3.1	-0.1	3.1	-0.1
PSYC	2.4	2.1	0.3	2.3	0.1
PTAC	2.5	2.8	-0.3	2.8	-0.3
RNSG	2.5	2.4	0.1	2.5	
SCIT	2.4	3.0	-0.6	3.0	-0.6
SGNL	2.7	2.8	-0.1	2.5	0.2
SOCI	2.6	2.2	0.4	2.3	0.3
SOCW	2.4	3.9	-1.5	3.8	-1.4
SPAN	2.6	3.1	-0.5	3.2	-0.6
SPCH	2.6	2.6		2.7	-0.1
SPNL	2.8	3.1	-0.3	3.4	-0.6
TECA	3.4	3.6	-0.2	3.4	
TECM	3.0	3.2	-0.2	2.9	0.1
VNSG	3.0	2.7	0.3	2.8	0.2
WLDG	3.4	3.4		3.3	0.1
Grand Total	2.7	2.7		2.8	-0.1

Three Year Comparison of Completion Percentages By Subject Area
Lee College - Baytown Campus
Fall Grade Distribution History
Table 6

Subject Area	Fall 2006 Completers	Fall 2005 Completers	1 Yr. Change	Fall 2004 Completers	2 Yr. Change
ACCT	64.6%	77.9%	-13.3%	77.0%	-12.4%
ACNT	86.5%	85.2%	1.3%	81.1%	5.4%
AIRP	89.7%	77.9%	11.8%	90.6%	-0.9%
ANTH				91.7%	-91.7%
ARCE	75.0%		75.0%		75.0%
ARCH	58.3%	81.2%	-22.9%	68.4%	-10.1%
ARTC	75.0%	76.9%	-1.9%	100.0%	-25.0%
ARTS	75.9%	76.2%	-0.3%	75.3%	0.6%
BCIS	73.2%	79.0%	-5.8%	85.7%	-12.5%
BIBL	0.0%	25.0%	-25.0%	66.7%	-66.7%
BIOL	69.0%	71.2%	-2.2%	72.4%	-3.4%
BMGT	91.3%	80.5%	10.8%	81.0%	10.3%
BUSI	87.8%	87.2%	0.6%	82.3%	5.5%
CHEM	77.5%	69.5%	8.0%	82.7%	-5.2%
CJSA	0.0%	100.0%	-100.0%		0.0%
COMM	74.2%	68.2%	6.0%	68.3%	5.9%
COSC	71.4%	84.1%	-12.7%	82.4%	-11.0%
CPMT	86.3%	82.1%	4.2%	85.4%	0.9%
CRJ	73.3%	76.4%	-3.1%	81.5%	-8.2%
CSME	72.7%	70.1%	2.6%	74.3%	-1.6%
DAAC	61.2%	69.7%	-8.5%	79.3%	-18.1%
DFTG	79.5%	74.8%	4.7%	74.2%	5.3%
DRAM	63.2%	68.0%	-4.8%	75.8%	-12.6%
ECON	72.1%	75.2%	-3.1%	84.8%	-12.7%
EDUC	72.2%	69.0%	3.2%	84.7%	-12.5%
ELPT	71.9%	75.1%	-3.2%	80.6%	-8.7%
EMSP				54.7%	-54.7%
ENGL	74.9%	72.7%	2.2%	72.1%	2.8%
ENVR	74.4%	84.6%	-10.2%	66.7%	7.7%
GEOG	91.3%		91.3%	93.5%	-2.2%
GEO	72.9%	67.5%	5.4%	42.6%	30.3%
GOVT	77.6%	71.9%	5.7%	74.2%	3.4%
HART				100.0%	-100.0%
HIST	72.4%	60.4%	12.0%	72.7%	-0.3%
HITT	76.0%	72.5%	3.5%	76.9%	-0.9%
HRPO	85.5%	80.6%	4.9%	81.3%	4.2%
HUMA	73.4%	70.4%	3.0%	78.5%	-5.1%
IMED	75.0%		75.0%	100.0%	-25.0%
INTC	75.0%	77.1%	-2.1%	82.9%	-7.9%
ITCC	69.0%	88.2%	-19.2%	81.8%	-12.8%
ITNW	88.5%		88.5%	90.0%	-1.5%
ITSC	80.8%	76.3%	4.5%	82.4%	-1.6%
ITSE	20.0%	70.7%	-50.7%	83.3%	-63.3%
ITSW	66.7%		66.7%	87.0%	-20.3%
KINE	81.4%	80.5%	0.9%	79.4%	2.0%
LGLA	91.3%	71.7%	19.6%	83.1%	8.2%
MATH	61.8%	61.9%	-0.1%	63.0%	-1.2%
MCHN	68.3%	68.0%	0.3%	75.0%	-6.7%
MRKG	88.2%	82.4%	5.8%	76.2%	12.0%
MRMT	79.4%	76.7%	2.7%	81.1%	-1.7%
MUAP	83.1%	67.0%	16.1%	82.3%	0.8%
MUEN	87.9%	80.6%	7.3%	93.0%	-5.1%
MUSI	79.3%	73.3%	6.0%	90.7%	-11.4%
NDTE	84.6%	85.0%	-0.4%	86.7%	-2.1%
OSHT	66.7%		66.7%		66.7%
PFPB	73.5%	70.5%	3.0%	62.8%	10.7%
PHIL	71.4%	75.3%	-3.9%	71.4%	
PHYS	88.7%	87.3%	1.4%	81.6%	7.1%
POFI	78.9%	80.8%	-1.9%	83.8%	-4.9%
POFT	82.8%	78.5%	4.3%	82.4%	0.4%
PSYC	82.1%	82.1%		83.0%	-0.9%
PTAC	86.8%	81.5%	5.3%	83.9%	2.9%
RNSG	87.5%	89.6%	-2.1%	90.2%	-2.7%
SCIT	90.8%	81.8%	9.0%	87.5%	3.3%
SGNL	91.5%	87.8%	3.7%	91.3%	0.2%
SOCI	81.1%	79.2%	1.9%	89.6%	-8.5%
SOCW	88.9%	78.9%	10.0%	62.5%	26.4%
SPAN	69.9%	82.4%	-12.5%	76.8%	-6.9%
SPCH	81.0%	76.9%	4.1%	77.5%	3.5%
SPNL	87.0%	70.1%	16.9%	73.9%	13.1%
TECA	82.3%	81.4%	0.9%	88.5%	-6.2%
TECM	81.5%	76.6%	4.9%	78.4%	3.1%
VNSG	93.9%	87.1%	6.8%	88.3%	5.6%
WLDG	77.1%	83.6%	-6.5%	86.4%	-9.3%
Grand Total	78.3%	76.3%	2.0%	78.9%	-0.6%

Developmental Education Completion Percentage By Subject Area
Lee College - Baytown Campus
Fall 2006 Grade Distribution Summary
Table 7/Chart 2

Subject Area	Percent of Completers	Total Headcount	Number of Sections
COSS	80.9%	188	13
ENGL	73.0%	159	13
ESOL	64.7%	34	2
MATH	62.9%	902	73
READ	79.9%	348	20
Grand Total	69.6%	1,631	121



Area Grade Summary By Subject Area
Lee College - Huntsville Campus
Fall 2006 Grade Distribution Summary
Table 8

Subject Area	Average GPA	Percent Of Completers	Total Headcount	Number of Sections
ABDR	3.8	100.0%	56	4
ACCT	3.9	98.0%	51	3
ARTC	3.9	100.0%	14	1
ARTS	2.6	94.8%	58	2
AUMT	3.1	100.0%	29	3
BIOL	3.5	96.1%	77	3
BUSI	3.1	97.3%	74	3
CETT	3.4	100.0%	21	1
COSC	3.2	96.9%	32	2
CPMT	3.5	100.0%	78	4
CRPT	4.0	87.5%	16	1
CVOP	3.6	99.6%	280	22
ECON	4.0	95.9%	74	3
ENGL	3.3	96.8%	93	8
GOVT	3.0	96.3%	27	2
HALT	3.6	98.1%	108	6
HART	3.2	96.8%	63	3
HIST	3.8	97.4%	38	2
ITNW	3.0	100.0%	17	1
ITSC	3.4	100.0%	27	1
ITSE	3.2	100.0%	60	4
ITSW	3.6	100.0%	58	4
MATH	2.7	83.9%	31	2
POFI	2.9	100.0%	17	1
PSYC	3.6	90.5%	21	1
SOCI	3.7	89.0%	91	4
SPCH	3.3	94.5%	91	5
TECM	4.0	87.5%	16	1
WDWK	4.0	100.0%	55	3
WLDG	3.0	94.4%	72	3
Grand Total	3.5	97.0%	1,745	103

Area Grade Summary By Average GPA
Lee College - Huntsville Campus
Fall 2006 Grade Distribution Summary
Table 9

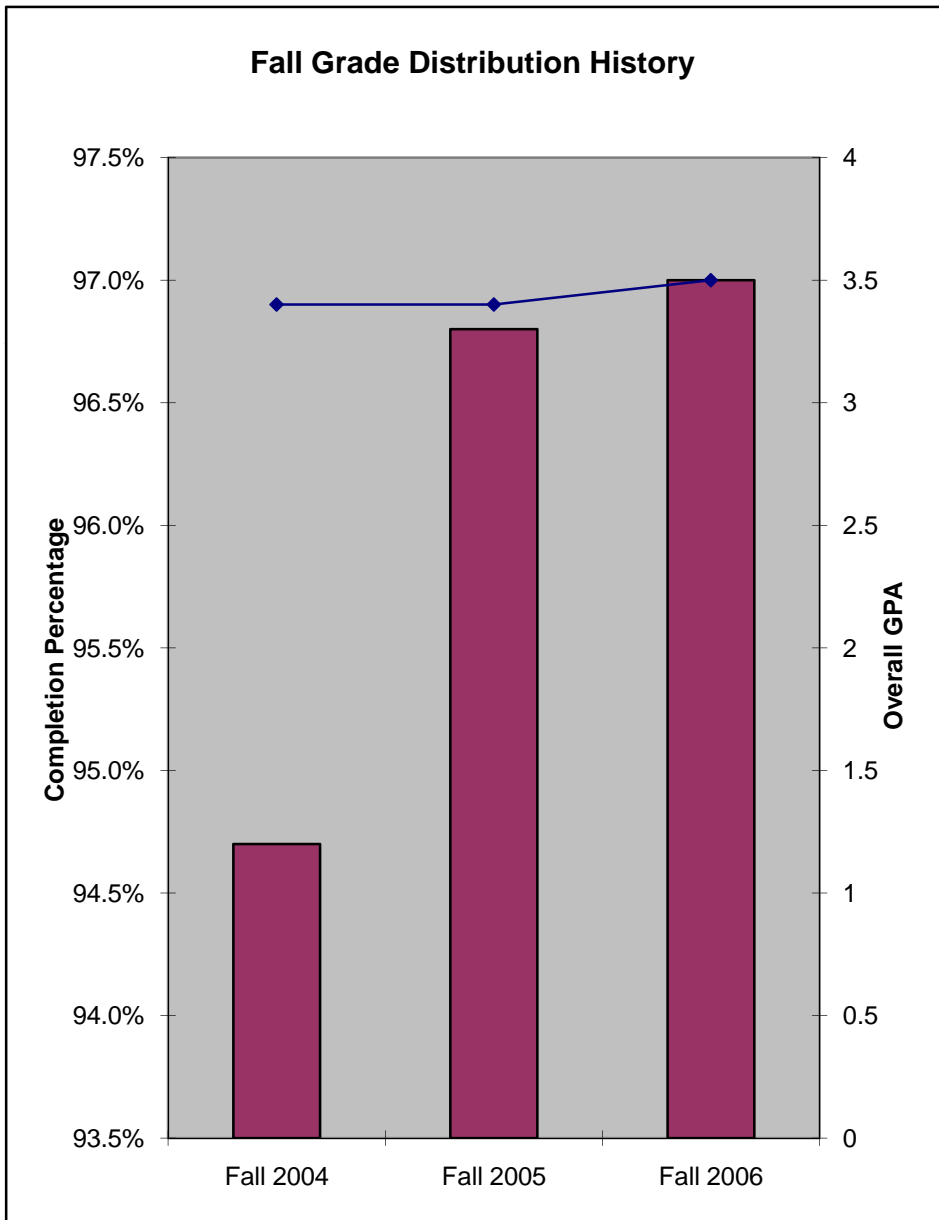
Subject Area	Average GPA	Percent Of Completers	Total Headcount	Number of Sections
CRPT	4.0	87.5%	16	1
ECON	4.0	95.9%	74	3
TECM	4.0	87.5%	16	1
WDWK	4.0	100.0%	55	3
ACCT	3.9	98.0%	51	3
ARTC	3.9	100.0%	14	1
ABDR	3.8	100.0%	56	4
HIST	3.8	97.4%	38	2
SOCI	3.7	89.0%	91	4
CVOP	3.6	99.6%	280	22
HALT	3.6	98.1%	108	6
ITSW	3.6	100.0%	58	4
PSYC	3.6	90.5%	21	1
BIOL	3.5	96.1%	77	3
CPMT	3.5	100.0%	78	4
CETT	3.4	100.0%	21	1
ITSC	3.4	100.0%	27	1
ENGL	3.3	96.8%	93	8
SPCH	3.3	94.5%	91	5
COSC	3.2	96.9%	32	2
HART	3.2	96.8%	63	3
ITSE	3.2	100.0%	60	4
AUMT	3.1	100.0%	29	3
BUSI	3.1	97.3%	74	3
GOVT	3.0	96.3%	27	2
ITNW	3.0	100.0%	17	1
WLDG	3.0	94.4%	72	3
POFI	2.9	100.0%	17	1
MATH	2.7	83.9%	31	2
ARTS	2.6	94.8%	58	2
Grand Total	3.5	97.0%	1,745	103

Area Grade Summary By Completion Percentage
Lee College - Huntsville Campus
Fall 2006 Grade Distribution Summary
Table 10

Subject Area	Average GPA	Percent Of Completers	Total Headcount	Number of Sections
ABDR	3.8	100.0%	56	4
ARTC	3.9	100.0%	14	1
AUMT	3.1	100.0%	29	3
CETT	3.4	100.0%	21	1
CPMT	3.5	100.0%	78	4
ITNW	3.0	100.0%	17	1
ITSC	3.4	100.0%	27	1
ITSE	3.2	100.0%	60	4
ITSW	3.6	100.0%	58	4
POFI	2.9	100.0%	17	1
WDWK	4.0	100.0%	55	3
CVOP	3.6	99.6%	280	22
HALT	3.6	98.1%	108	6
ACCT	3.9	98.0%	51	3
HIST	3.8	97.4%	38	2
BUSI	3.1	97.3%	74	3
COSC	3.2	96.9%	32	2
ENGL	3.3	96.8%	93	8
HART	3.2	96.8%	63	3
GOVT	3.0	96.3%	27	2
BIOL	3.5	96.1%	77	3
ECON	4.0	95.9%	74	3
ARTS	2.6	94.8%	58	2
SPCH	3.3	94.5%	91	5
WLDG	3.0	94.4%	72	3
PSYC	3.6	90.5%	21	1
SOCI	3.7	89.0%	91	4
CRPT	4.0	87.5%	16	1
TECM	4.0	87.5%	16	1
MATH	2.7	83.9%	31	2
Grand Total	3.5	97.0%	1,745	103

Three Year Comparison By Completion Percentage & GPA
Lee College - Huntsville Campus
Fall Grade Distribution History
Table 11/Chart 3

	Completion Percentage	GPA
Fall 2004	94.7%	3.4
Fall 2005	96.8%	3.4
Fall 2006	97.0%	3.5



Three Year Comparison of GPA By Subject Area
Lee College - Huntsville Campus
Fall Grade Distribution History
Table 12

Subject Area	Fall 2006 Average GPA	Fall 2005 Average GPA	1 Yr. Change	Fall 2004 Average GPA	2 Yr. Change
ABDR	3.8	3.3	0.5	3.8	
ACCT	3.9		3.9	3.6	0.3
ARTC	3.9		3.9		3.9
ARTS	2.6		2.6	3.3	-0.7
AUMT	3.1	3.1		3.1	
BIOL	3.5	3.1	0.4	3.3	0.2
BMGT				3.1	-3.1
BUSI	3.1	3.7	-0.6	3.1	
CETT	3.4	3.1	0.3	3.5	-0.1
COSC	3.2	3.1	0.1	3.2	
CPMT	3.5	3.5		3.6	-0.1
CRPT	4.0	4.0			4.0
CVOP	3.6	3.6		3.4	0.2
DEMR		3.8	-3.8	3.7	-3.7
ECON	4.0		4.0	3.0	1.0
ENGL	3.3	3.3		3.3	
ENVR		3.7	-3.7	3.4	-3.4
GEOL				3.5	-3.5
GOVT	3.0	3.4	-0.4	3.5	-0.5
HALT	3.6	3.7	-0.1	3.6	
HART	3.2	3.1	0.1	3.1	0.1
HIST	3.8		3.8	2.9	0.9
HUMA				3.7	-3.7
ITNW	3.0	3.2	-0.2	3.3	-0.3
ITSC	3.4	3.8	-0.4	3.6	-0.2
ITSE	3.2	3.6	-0.4	3.7	-0.5
ITSW	3.6	3.7	-0.1	3.8	-0.2
MATH	2.7	2.2	0.5	2.0	0.7
MUSI				3.7	-3.7
POFI	2.9	3.3	-0.4	3.6	-0.7
POFT				3.4	-3.4
PSYC	3.6	3.7	-0.1	3.7	-0.1
SLNG				3.2	-3.2
SOCI	3.7	3.6	0.1	3.5	0.2
SPCH	3.3		3.3	3.8	-0.5
TECM	4.0	4.0		2.6	1.4
WDWK	4.0		4.0		4.0
WLDG	3.0	2.9	0.1	3.1	-0.1
Grand Total	3.5	3.4	0.1	3.4	0.1

Three Year Comparison of Completion Percentages By Subject Area
Lee College - Huntsville Campus
Fall Grade Distribution History
Table 13

Subject Area	Fall 2006 Completers	Fall 2005 Completers	1 Yr. Change	Fall 2004 Completers	2 Yr. Change
ABDR	100.0%	84.6%	15.4%	87.5%	12.5%
ACCT	98.0%		98.0%	95.9%	2.1%
ARTC	100.0%		100.0%		100.0%
ARTS	94.8%		94.8%	94.6%	0.2%
AUMT	100.0%	98.0%	2.0%	90.5%	9.5%
BIOL	96.1%	85.4%	10.7%	90.3%	5.8%
BMGT				94.5%	-94.5%
BUSI	97.3%	94.7%	2.6%	96.3%	1.0%
CETT	100.0%	100.0%	0.0%	97.6%	2.4%
COSC	96.9%	93.7%	3.2%	97.4%	-0.5%
CPMT	100.0%	100.0%		97.6%	2.4%
CRPT	87.5%	88.2%	-0.7%		87.5%
CVOP	99.6%	100.0%	-0.4%	93.0%	6.6%
DEMR		98.2%	-98.2%	100.0%	-100.0%
ECON	95.9%		95.9%	97.6%	-1.7%
ENGL	96.8%	97.7%	-0.9%	93.5%	3.3%
ENVR		100.0%	-100.0%	88.9%	-88.9%
GEOL				91.8%	-91.8%
GOVT	96.3%	95.8%	0.5%	90.0%	6.3%
HALT	98.1%	100.0%	-1.9%	98.3%	-0.2%
HART	96.8%	100.0%	-3.2%	100.0%	-3.2%
HIST	97.4%		97.4%	84.1%	13.3%
HUMA				100.0%	-100.0%
ITNW	100.0%	100.0%		100.0%	0.0%
ITSC	100.0%	100.0%		98.2%	1.8%
ITSE	100.0%	100.0%		100.0%	
ITSW	100.0%	97.1%	2.9%	95.2%	4.8%
MATH	83.9%	100.0%	-16.1%	91.1%	-7.2%
MUSI				94.4%	-94.4%
POFI	100.0%	100.0%		100.0%	
POFT				91.5%	-91.5%
PSYC	90.5%	89.1%	1.4%	90.4%	0.1%
SLNG				100.0%	-100.0%
SOCI	89.0%	87.2%	1.8%	97.2%	-8.2%
SPCH	94.5%		94.5%	97.2%	-2.7%
TECM	87.5%	88.2%	-0.7%	100.0%	-12.5%
WDWK	100.0%		100.0%		100.0%
WLDG	94.4%	98.3%	-3.9%	87.1%	7.3%
Grand Total	97.0%	96.8%	0.2%	94.7%	2.3%

Developmental Education Completion Percentage By Subject Area
Lee College - Huntsville Campus
Fall 2006 Grade Distribution Summary
Table 14/Chart 4

Subject Area	Percent of Completers	Total Headcount	Number of Sections
ENGL	100.0%	3	1
MATH	95.7%	46	10
READ	75.0%	4	2
Grand Total	94.3%	53	13

Percent of Completers

