

Lee  **College**

Office of Institutional Research

Grade Distribution Report
Fall 2004

Prepared:
February, 2005

Fall 2004 Grade Distribution Report

The Fall 2004 Grade Distribution Report contains GPA and Completion Percentage data reported by Subject Area. The Fall 2004 data are compared with Fall 2003 and Fall 2002.

The data in this report are summarized from detailed class grade reports produced by the Office of Institutional research. These detailed reports are provided to the President, Deans, and Division Chairs. Faculty members may request detailed information from Division Chairs or from the Office of Institutional Research.

Highlights of the Report

- ⇒ Overall GPA for the Baytown Campus (all students excluding HC/LC) was 2.8, unchanged from Fall 2003 and Fall 2002.
- ⇒ Overall percentage of students completing non-developmental classes for the Baytown Campus was 78.9% for Fall 2004, up 1.1 percentage points from Fall 2003 (77.8%), and up by 0.6 percentage points from Fall 2002 (78.3%).
- ⇒ Overall percentage of students completing developmental classes for the Baytown campus was 70.4%.
- ⇒ Overall GPA for HC/LC was 3.4, unchanged from Fall 2003 and up 0.1 from Fall 2002 (3.3).
- ⇒ Overall percentage of students completing non-developmental classes for the HC/LC campus was 94.7%, down 0.2 percentage points from Fall 2003 (94.9) and down 1.3 percentage points from Fall 2002 (96.0).
- ⇒ Overall percentage of students completing developmental classes for the Huntsville campus was 93.4%.

Table Guide

Table	Contents	Site
Table 1	Area Grade Summary By Subject Area	Baytown
Table 2	Area Grade Summary By GPA	Baytown
Table 3	Area Grade Summary By Completion Percentage	Baytown
Table 4	3 Year History Chart - GPA and Completion Percentage	Baytown
Table 5	3 Year Comparison of GPA By Area	Baytown
Table 6	3 Year Comparison of Completion Percentage By Area	Baytown
Table 7	Developmental Education Completion Percentage By Area	Baytown
Table 8	Area Grade Summary By Subject Area	Huntsville
Table 9	Area Grade Summary By GPA	Huntsville
Table 10	Area Grade Summary By Completion Percentage	Huntsville
Table 11	3 Year History Chart - GPA and Completion Percentage	Huntsville
Table 12	3 Year Comparison of GPA By Area	Huntsville
Table 13	3 Year Comparison of Completion Percentage By Area	Huntsville
Table 14	Developmental Education Completion Percentage By Area	Huntsville

Table 1
Lee College - Baytown Campus
Fall 2004 Grade Distribution Summary
Sorted by Area

AREA	AVERAGE GPA	PERCENT COMPLETERS	TOTAL HEADCOUNT	NUMBER SECTIONS
ACCT	2.4	77.0%	152	6
ACNT	2.9	81.1%	127	11
AIRP	3.3	90.6%	64	9
ANTH	2.4	91.7%	12	1
ARCH	3.4	68.4%	79	5
ARTC	4.0	100.0%	1	1
ARTS	3.4	75.3%	328	30
BCIS	3.1	85.7%	42	2
BIBL	3.0	66.7%	3	1
BIOL	2.5	72.4%	913	41
BMGT	2.7	81.0%	210	12
BUSG	0.0	0.0%	1	1
BUSI	2.3	82.3%	158	8
CHEM	3.0	82.7%	139	10
COMM	2.7	68.3%	60	11
COSC	2.6	82.4%	261	15
CPMT	3.1	85.4%	205	14
CRIJ	2.9	81.5%	178	8
CSME	2.8	74.3%	288	27
DAAC	3.2	79.3%	111	12
DFTG	3.1	74.2%	128	15
DRAM	3.5	75.8%	161	9
ECON	3.0	84.8%	164	7
EDUC	3.1	84.7%	111	6
ELPT	3.3	80.6%	160	11
EMSP	2.8	54.7%	128	11
ENGL	2.4	72.1%	1227	76
ENVR	3.0	66.7%	45	3
GEOG	2.6	93.5%	31	1
GEOI	2.5	42.6%	61	3
GOVT	2.5	74.2%	578	20
HART	2.9	100.0%	10	2
HIST	2.3	72.7%	703	28
HITT	3.2	76.9%	329	22
HRPO	2.4	81.3%	64	3
HUMA	2.8	78.5%	242	20
IMED	3.6	100.0%	28	2
INTC	2.9	82.9%	222	14
ITCC	3.7	81.8%	55	4
ITNW	3.1	90.0%	20	2
ITSC	2.9	82.4%	442	21
ITSE	2.8	83.3%	66	8
ITSW	3.0	87.0%	23	3
KINE	3.2	79.4%	621	65
LGIA	3.3	83.1%	154	9
MATH	2.4	63.0%	440	32
MCHN	3.4	75.0%	48	7
MRKG	3.1	76.2%	42	2
MRMT	3.2	81.1%	37	3
MUAP	3.6	82.3%	96	55
MUEN	3.8	93.0%	71	13
MUSI	3.1	90.7%	225	20
NDTE	3.7	86.7%	15	1
PFPB	3.7	62.8%	86	7
PHIL	2.2	71.4%	77	3
PHYS	3.0	81.6%	103	10
POFI	3.0	83.8%	216	15
POFT	3.1	82.4%	324	28
PSYC	2.3	83.0%	600	21
PTAC	2.8	83.9%	415	29
RNSG	2.5	90.2%	772	34
SCIT	3.0	87.5%	56	3
SGNL	2.5	91.3%	23	1
SOCI	2.3	89.6%	212	9
SOCW	3.8	62.5%	8	1
SPAN	3.2	76.8%	82	8
SPCH	2.7	77.5%	534	25
SPNL	3.4	73.9%	46	2
TECA	3.4	88.5%	244	18
TECM	2.9	78.4%	162	7
VNSG	2.8	88.3%	503	17
WLDG	3.3	86.4%	162	21
Grand Total	2.8	78.9%	14,704	982

Table 2
Lee College - Baytown Campus
Fall 2004 Grade Distribution Summary
Sorted by Average GPA

AREA	AVERAGE GPA	PERCENT COMPLETERS	TOTAL HEADCOUNT	NUMBER SECTIONS
ARTC	4.0	100.0%	1	1
MUEN	3.8	93.0%	71	13
SOCW	3.8	62.5%	8	1
ITCC	3.7	81.8%	55	4
NDTE	3.7	86.7%	15	1
PFPB	3.7	62.8%	86	7
IMED	3.6	100.0%	28	2
MUAP	3.6	82.3%	96	55
DRAM	3.5	75.8%	161	9
ARCH	3.4	68.4%	79	5
ARTS	3.4	75.3%	328	30
MCHN	3.4	75.0%	48	7
SPNL	3.4	73.9%	46	2
TECA	3.4	88.5%	244	18
AIRP	3.3	90.6%	64	9
ELPT	3.3	80.6%	160	11
LGLA	3.3	83.1%	154	9
WLDG	3.3	86.4%	162	21
DAAC	3.2	79.3%	111	12
HITT	3.2	76.9%	329	22
KINE	3.2	79.4%	621	65
MRMT	3.2	81.1%	37	3
SPAN	3.2	76.8%	82	8
BCIS	3.1	85.7%	42	2
CPMT	3.1	85.4%	205	14
DFTG	3.1	74.2%	128	15
EDUC	3.1	84.7%	111	6
ITNW	3.1	90.0%	20	2
MRKG	3.1	76.2%	42	2
MUSI	3.1	90.7%	225	20
POFT	3.1	82.4%	324	28
BIBL	3.0	66.7%	3	1
CHEM	3.0	82.7%	139	10
ECON	3.0	84.8%	164	7
ENVR	3.0	66.7%	45	3
ITSW	3.0	87.0%	23	3
PHYS	3.0	81.6%	103	10
POFI	3.0	83.8%	216	15
SCIT	3.0	87.5%	56	3
ACNT	2.9	81.1%	127	11
CRIJ	2.9	81.5%	178	8
HART	2.9	100.0%	10	2
INTC	2.9	82.9%	222	14
ITSC	2.9	82.4%	442	21
TECM	2.9	78.4%	162	7
CSME	2.8	74.3%	288	27
EMSP	2.8	54.7%	128	11
HUMA	2.8	78.5%	242	20
ITSE	2.8	83.3%	66	8
PTAC	2.8	83.9%	415	29
VNSG	2.8	88.3%	503	17
BMGT	2.7	81.0%	210	12
COMM	2.7	68.3%	60	11
SPCH	2.7	77.5%	534	25
COSC	2.6	82.4%	261	15
GEOG	2.6	93.5%	31	1
BIOL	2.5	72.4%	913	41
GEOI	2.5	42.6%	61	3
GOVT	2.5	74.2%	578	20
RNSG	2.5	90.2%	772	34
SGNL	2.5	91.3%	23	1
ACCT	2.4	77.0%	152	6
ANTH	2.4	91.7%	12	1
ENGL	2.4	72.1%	1227	76
HRPO	2.4	81.3%	64	3
MATH	2.4	63.0%	440	32
BUSI	2.3	82.3%	158	8
HIST	2.3	72.7%	703	28
PSYC	2.3	83.0%	600	21
SOCI	2.3	89.6%	212	9
PHIL	2.2	71.4%	77	3
BUSG	0.0	0.0%	1	1
Grand Total	2.8	78.9%	14,704	982

Table 3
Lee College - Baytown Campus
Fall 2004 Grade Distribution Summary
Sorted by Completion Percentage

AREA	AVERAGE GPA	PERCENT COMPLETERS	TOTAL HEADCOUNT	NUMBER SECTIONS
ARTC	4.0	100.0%	1	1
HART	2.9	100.0%	10	2
IMED	3.6	100.0%	28	2
GEOG	2.6	93.5%	31	1
MUEN	3.8	93.0%	71	13
ANTH	2.4	91.7%	12	1
SGNL	2.5	91.3%	23	1
MUSI	3.1	90.7%	225	20
AIRP	3.3	90.6%	64	9
RNSG	2.5	90.2%	772	34
ITNW	3.1	90.0%	20	2
SOCI	2.3	89.6%	212	9
TECA	3.4	88.5%	244	18
VNSG	2.8	88.3%	503	17
SCIT	3.0	87.5%	56	3
ITSW	3.0	87.0%	23	3
NDTE	3.7	86.7%	15	1
WLDG	3.3	86.4%	162	21
BCIS	3.1	85.7%	42	2
CPMT	3.1	85.4%	205	14
ECON	3.0	84.8%	164	7
EDUC	3.1	84.7%	111	6
PTAC	2.8	83.9%	415	29
POFI	3.0	83.8%	216	15
ITSE	2.8	83.3%	66	8
LGLA	3.3	83.1%	154	9
PSYC	2.3	83.0%	600	21
INTC	2.9	82.9%	222	14
CHEM	3.0	82.7%	139	10
COSC	2.6	82.4%	261	15
ITSC	2.9	82.4%	442	21
POFT	3.1	82.4%	324	28
BUSI	2.3	82.3%	158	8
MUAP	3.6	82.3%	96	55
ITCC	3.7	81.8%	55	4
PHYS	3.0	81.6%	103	10
CRIJ	2.9	81.5%	178	8
HRPO	2.4	81.3%	64	3
ACNT	2.9	81.1%	127	11
MRMT	3.2	81.1%	37	3
BMGT	2.7	81.0%	210	12
ELPT	3.3	80.6%	160	11
KINE	3.2	79.4%	621	65
DAAC	3.2	79.3%	111	12
HUMA	2.8	78.5%	242	20
TECM	2.9	78.4%	162	7
SPCH	2.7	77.5%	534	25
ACCT	2.4	77.0%	152	6
HITT	3.2	76.9%	329	22
SPAN	3.2	76.8%	82	8
MRKG	3.1	76.2%	42	2
DRAM	3.5	75.8%	161	9
ARTS	3.4	75.3%	328	30
MCHN	3.4	75.0%	48	7
CSME	2.8	74.3%	288	27
DFTG	3.1	74.2%	128	15
GOVT	2.5	74.2%	578	20
SPNL	3.4	73.9%	46	2
HIST	2.3	72.7%	703	28
BIOL	2.5	72.4%	913	41
ENGL	2.4	72.1%	1227	76
PHIL	2.2	71.4%	77	3
ARCH	3.4	68.4%	79	5
COMM	2.7	68.3%	60	11
BIBL	3.0	66.7%	3	1
ENVR	3.0	66.7%	45	3
MATH	2.4	63.0%	440	32
PFPB	3.7	62.8%	86	7
SOCW	3.8	62.5%	8	1
EMSP	2.8	54.7%	128	11
GEOL	2.5	42.6%	61	3
BUSG	0.0	0.0%	1	1
Grand Total	2.8	78.9%	14,704	982

Table 4
Lee College - Baytown Campus
Fall Grade Distribution History Comparison

	Completion Percentage	GPA
Fall 2002	78.3%	2.8
Fall 2003	77.8%	2.8
Fall 2004	78.9%	2.8

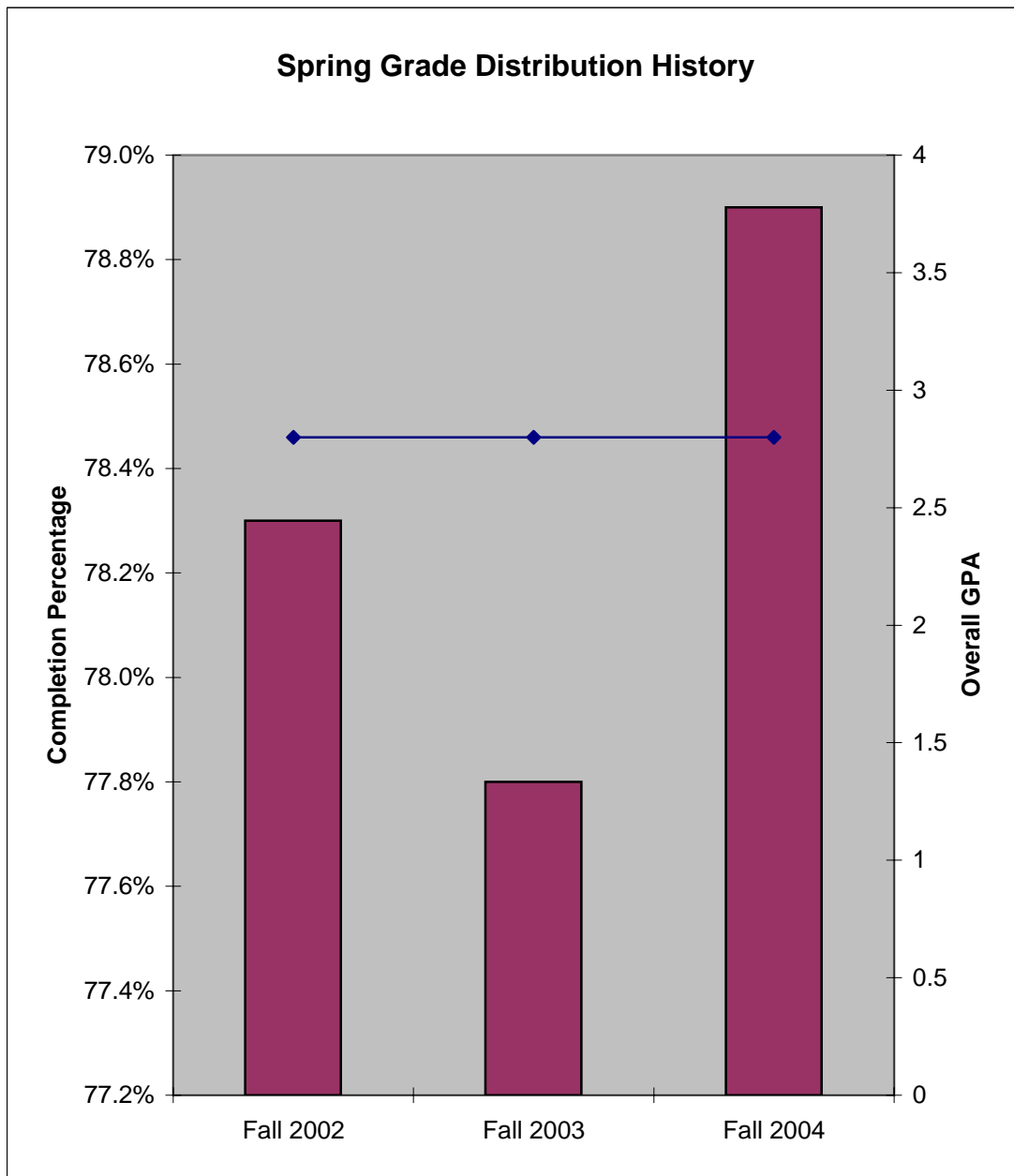


Table 5
Lee College - Baytown Campus
Fall 2004 Grade Distribution Summary
Fall GPA History

Area	Fall 2004 Average GPA	Fall 2003 Average GPA	1 Yr. Change	Fall 2002 Average GPA	2 Yr. Change
ACCT	2.4	2.6	-0.2	2.7	-0.3
ACNT	2.9	2.9	0.0	3.3	-0.4
AIRP	3.3	3.6	-0.3	3.5	-0.2
ANTH	2.4	2.6	-0.2	3.3	-0.9
ARCH	3.4	3.0	0.4	3.0	0.4
ARTC	4.0	3.0	1.0		
ARTS	3.4	3.4	0.0	3.3	0.1
BCIS	3.1	3.0	0.1	3.6	-0.5
BIBL	3.0				
BIOL	2.5	2.5	0.0	2.6	-0.1
BMTG	2.7	2.9	-0.2	3.1	-0.4
BUSG	0.0	4.0	-4.0	4.0	-4.0
BUSI	2.3	2.5	-0.2	2.5	-0.2
CHEM	3.0	3.1	-0.1	2.8	0.2
CJSA		4.0		4.0	
CNBT				3.8	
COMM	2.7	2.4	0.3	3.4	-0.7
COSC	2.6	2.8	-0.2	2.7	-0.1
CPMT	3.1	3.0	0.1	3.2	-0.1
CRJ	2.9	3.1	-0.2	3.2	-0.3
CSME	2.8	3.2	-0.4	2.7	0.1
CTEC		3.1			
DAAC	3.2	3.4	-0.2	3.5	-0.3
DFTG	3.1	2.3	0.8	2.5	0.6
DRAM	3.5	3.5	0.0	2.6	0.9
ECON	3.0	2.7	0.3	2.5	0.5
EDUC	3.1	3.4	-0.3	3.1	0.0
ELPT	3.3	3.3	0.0	3.3	0.0
EMSP	2.8	2.6	0.2	3.1	-0.3
ENGL	2.4	2.3	0.1	2.3	0.1
ENVR	3.0	2.8	0.2	2.9	0.1
FREN				2.5	
GEOG	2.6	2.2	0.4	2.1	0.5
GEO	2.5	2.3	0.2	1.9	0.6
GOVT	2.5	2.4	0.1	2.6	-0.1
GRAH				2.4	
HART	2.9	1.9	1.0	1.2	1.7
HIST	2.3	2.3	0.0	2.4	-0.1
HITT	3.2	3.0	0.2	2.9	0.3
HRPO	2.4	2.9	-0.5	2.7	-0.3
HUMA	2.8	2.7	0.1	2.7	0.1
HYDR				2.2	-2.2
IMED	3.6	4.0	-0.4	3.3	0.3
INTC	2.9	3.0	-0.1	3.4	-0.5
ITCC	3.7	3.3	0.4	3.6	0.1
ITNW	3.1	2.7	0.4	2.9	0.2
ITSC	2.9	2.9	0.0	3.2	-0.3
ITSE	2.8	2.4	0.4	3.0	-0.2
ITSW	3.0	2.4	0.6	2.4	0.6
KINE	3.2	3.2	0.0	3.6	-0.4
LGLA	3.3	3.4	-0.1	3.4	-0.1
MATH	2.4	2.4	0.0	2.5	-0.1
MCHN	3.4	3.5	-0.1	3.6	-0.2
MRKG	3.1	4.0	-0.9		
MRMT	3.2	3.6	-0.4	3.3	-0.1
MUAP	3.6	3.5	0.1	3.7	-0.1
MUJEN	3.8	3.9	-0.1	3.5	0.3
MUSI	3.1	2.7	0.4	2.8	0.3
NDTE	3.7	4.0	-0.3	3.3	0.4
OSHT				3.4	
PFPB	3.7	3.4	0.3	2.9	0.8
PHED		3.2		3.4	
PHIL	2.2	2.4	-0.2	2.2	0.0
PHYS	3.0	3.0	0.0	3.3	-0.3
POFI	3.0	3.1	-0.1	2.9	0.1
POFT	3.1	3.0	0.1	2.9	0.2
PSYC	2.3	2.2	0.1	2.4	-0.1
PTAC	2.8	3.2	-0.4	2.9	-0.1
RNSG	2.5	2.5	0.0	2.5	0.0
SCIT	3.0	2.9	0.1	2.6	0.4
SGNL	2.5			2.8	-0.3
SOCI	2.3	2.2	0.1	2.2	0.1
SOCW	3.8				
SPAN	3.2	3.3	-0.1	3.1	0.1
SPCH	2.7	0.8	1.9	3.0	-0.3
SPNL	3.4	0.9	2.5	3.7	-0.3
TECA	3.4	3.4	0.0	3.4	0.0
TECM	2.9	2.1	0.8	3.1	-0.2
VNSG	2.8	2.7	0.1	2.8	0.0
WLDG	3.3	3.5	-0.2	3.3	0.0
GRAND TOTAL	2.8	2.8	0.0	2.8	0.0

Table 6
Lee College - Baytown Campus
Fall 2004 Grade Distribution Summary
Fall Completion History

Area	Fall 2004 Completers	Fall 2003 Completers	1 Yr. Change	Fall 2002 Completers	2 Yr. Change
ACCT	77.0%	78.3%	-1.3%	80.6%	-3.6%
ACNT	81.1%	84.2%	-3.1%	80.9%	0.2%
AIRP	90.6%	95.5%	-4.9%	73.8%	16.8%
ANTH	91.7%	81.8%	9.9%	64.7%	27.0%
ARCH	68.4%	74.6%	-6.2%	80.4%	-12.0%
ARTC	100.0%	73.7%	26.3%		
ARTS	75.3%	71.1%	4.2%	66.7%	8.6%
BCIS	85.7%	81.0%	4.7%	100.0%	-14.3%
BIBL	66.7%				
BIOL	72.4%	68.7%	3.7%	69.0%	3.4%
BMTG	81.0%	75.6%	5.4%	88.2%	-7.2%
BUSG	0.0%	100.0%	-100.0%	100.0%	-100.0%
BUSI	82.3%	74.1%	8.2%	79.6%	2.7%
CHEM	82.7%	82.2%	0.5%	86.1%	-3.4%
CJSA		100.0%		20.0%	
CNBT				81.0%	
COMM	68.3%	66.7%	1.6%	80.7%	-12.4%
COSC	82.4%	86.4%	-4.0%	89.0%	-6.6%
CPMT	85.4%	77.6%	7.8%	83.1%	2.3%
CRJ	81.5%	82.5%	-1.0%	90.4%	-8.9%
CSME	74.3%	67.7%	6.6%	83.1%	-8.8%
CTEC		91.7%			
DAAC	79.3%	73.0%	6.3%	74.7%	4.6%
DFTG	74.2%	85.3%	-11.1%	78.1%	-3.9%
DRAM	75.8%	77.3%	-1.5%	90.6%	-14.8%
ECON	84.8%	65.7%	19.1%	63.0%	21.8%
EDUC	84.7%	91.9%	-7.2%	88.5%	-3.8%
ELPT	80.6%	75.8%	4.8%	68.1%	12.5%
EMSP	54.7%	45.1%	9.6%	58.2%	-3.5%
ENGL	72.1%	74.2%	-2.1%	74.7%	-2.6%
ENVR	66.7%	62.1%	4.6%	60.5%	6.2%
FREN				40.0%	
GEOG	93.5%	94.1%	-0.6%	91.9%	1.6%
GEOL	42.6%	46.3%	-3.7%	63.4%	-20.8%
GOVT	74.2%	77.0%	-2.8%	79.6%	-5.4%
GRAH				72.0%	
HART	100.0%	73.0%	27.0%	46.2%	53.8%
HIST	72.7%	70.2%	2.5%	67.7%	5.0%
HITT	76.9%	74.1%	2.8%	76.0%	0.9%
HRPO	81.3%	67.5%	13.8%	88.6%	-7.3%
HUMA	78.5%	72.7%	5.8%	81.9%	-3.4%
HYDR				62.5%	
IMED	100.0%	58.3%	41.7%	100.0%	0.0%
INTC	82.9%	80.9%	2.0%	79.1%	3.8%
ITCC	81.8%	79.5%	2.3%	83.3%	-1.5%
ITNW	90.0%	100.0%	-10.0%	61.5%	28.5%
ITSC	82.4%	85.3%	-2.9%	78.4%	4.0%
ITSE	83.3%	56.4%	26.9%	75.5%	7.8%
ITSW	87.0%	91.4%	-4.4%	78.9%	8.1%
KINE	79.4%	79.0%	0.4%	78.9%	0.5%
LGLA	83.1%	93.6%	-10.5%	79.6%	3.5%
MATH	63.0%	61.5%	1.5%	55.0%	8.0%
MCHN	75.0%	79.4%	-4.4%	64.0%	11.0%
MRKG	76.2%	100.0%	-23.8%		
MRMT	81.1%	80.0%	1.1%	75.0%	6.1%
MUAP	82.3%	78.8%	3.5%	83.6%	-1.3%
MUEN	93.0%	89.5%	3.5%	85.2%	7.8%
MUSI	90.7%	83.1%	7.6%	81.5%	9.2%
NDTE	86.7%	81.8%	4.9%	75.0%	11.7%
OSHT				81.5%	
PFPB	62.8%	84.7%	-21.9%	79.1%	-16.3%
PHED		69.3%		80.5%	
PHIL	71.4%	74.7%	-3.3%	71.0%	0.4%
PHYS	81.6%	87.8%	-6.2%	78.7%	2.9%
POFI	83.8%	86.2%	-2.4%	85.9%	-2.1%
POFT	82.4%	89.1%	-6.7%	86.5%	-4.1%
PSYC	83.0%	79.8%	3.2%	83.1%	-0.1%
PTAC	83.9%	79.4%	4.5%	85.1%	-1.2%
RNSG	90.2%	88.7%	1.5%	79.8%	10.4%
SCIT	87.5%	78.1%	9.4%	78.4%	9.1%
SGNL	91.3%			84.6%	6.7%
SOCI	89.6%	79.7%	9.9%	86.5%	3.1%
SOCW	62.5%				
SPAN	76.8%	67.0%	9.8%	69.2%	7.6%
SPCH	77.5%	79.2%	-1.7%	73.6%	3.9%
SPNL	73.9%	85.2%	-11.3%	81.4%	-7.5%
TECA	88.5%	89.3%	-0.8%	86.6%	1.9%
TECM	78.4%	76.9%	1.5%	90.3%	-11.9%
VNSG	88.3%	93.0%	-4.7%	100.0%	-11.7%
WLDG	86.4%	76.3%	10.1%	78.0%	8.4%
GRAND TOTAL	78.9%	77.8%	1.1%	78.3%	0.6%

Table 7

**Lee College - Baytown Campus
Fall 2004 Grade Distribution Summary
Developmental Education Courses**

AREA	PERCENT COMPLETERS	TOTAL HEADCOUNT	NUMBER SECTIONS
COSS	77.6%	134	8
ENGL	86.2%	167	13
ESOL	69.6%	23	2
MATH	62.6%	845	79
READ	76.5%	277	16
TOTAL	70.4%	1,446	118

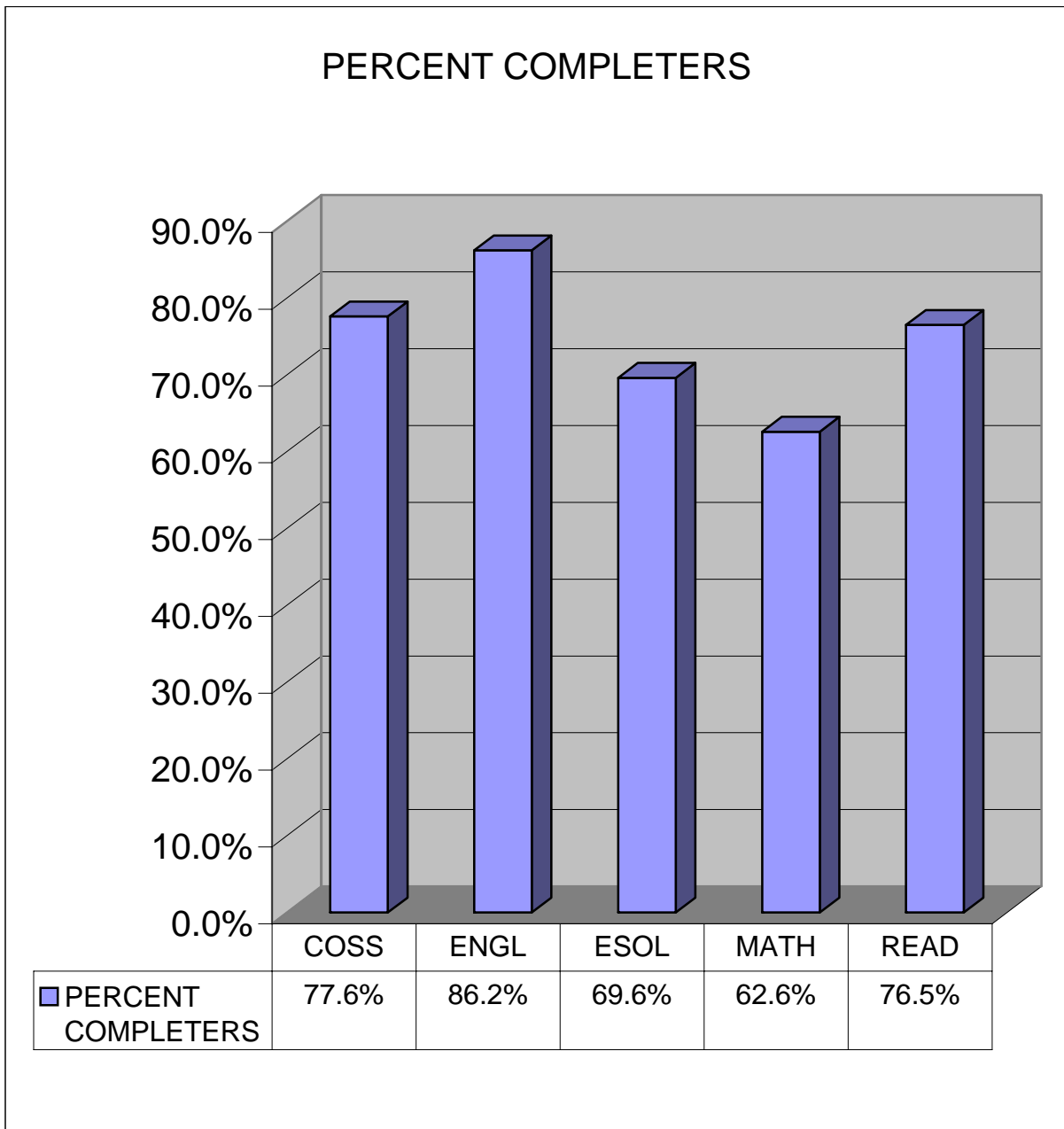


Table 8

Lee College - HC/LC

Fall 2004 Grade Distribution Summary

Sorted by Area

AREA	AVERAGE GPA	PERCENT COMPLETERS	TOTAL HEADCOUNT	NUMBER SECTIONS
ABDR	3.8	87.5%	32	2
ACCT	3.6	95.9%	73	3
ARTS	3.3	94.6%	92	4
AUMT	3.1	90.5%	42	3
BIOL	3.3	90.3%	31	2
BMGT	3.1	94.5%	73	3
BUSI	3.1	96.3%	54	2
CETT	3.5	97.6%	42	2
COSC	3.2	97.4%	39	2
CPMT	3.6	97.6%	168	8
CVOP	3.4	93.0%	201	14
DEMR	3.7	100.0%	78	4
ECON	3.0	97.6%	85	4
ENGL	3.3	93.5%	153	10
ENVR	3.4	88.9%	27	1
GEOL	3.5	91.8%	73	3
GOVT	3.5	90.0%	80	4
HALT	3.6	98.3%	115	6
HART	3.1	100.0%	60	3
HIST	2.9	84.1%	113	7
HUMA	3.7	100.0%	46	2
ITNW	3.3	100.0%	41	2
ITSC	3.6	98.2%	112	6
ITSE	3.7	100.0%	20	1
ITSW	3.8	95.2%	21	1
MATH	2.0	91.1%	90	6
MUSI	3.7	94.4%	18	1
POFI	3.6	100.0%	21	1
POFT	3.4	91.5%	47	3
PSYC	3.7	90.4%	73	4
SLNG	3.2	100.0%	11	1
SOCI	3.5	97.2%	142	6
SPCH	3.8	97.2%	108	6
TECM	2.6	100.0%	33	2
WLDG	3.1	87.1%	62	3
GRAND TOTAL	3.4	94.7%	2,476	132

Table 9

Lee College - HC/LC

Fall 2004 Grade Distribution Summary

Sorted by Average GPA

AREA	AVERAGE GPA	PERCENT COMPLETERS	TOTAL HEADCOUNT	NUMBER SECTIONS
ABDR	3.8	87.5%	32	2
ITSW	3.8	95.2%	21	1
SPCH	3.8	97.2%	108	6
DEMR	3.7	100.0%	78	4
HUMA	3.7	100.0%	46	2
ITSE	3.7	100.0%	20	1
MUSI	3.7	94.4%	18	1
PSYC	3.7	90.4%	73	4
ACCT	3.6	95.9%	73	3
CPMT	3.6	97.6%	168	8
HALT	3.6	98.3%	115	6
ITSC	3.6	98.2%	112	6
POFI	3.6	100.0%	21	1
CETT	3.5	97.6%	42	2
GEOL	3.5	91.8%	73	3
GOVT	3.5	90.0%	80	4
SOCI	3.5	97.2%	142	6
CVOP	3.4	93.0%	201	14
ENVR	3.4	88.9%	27	1
POFT	3.4	91.5%	47	3
ARTS	3.3	94.6%	92	4
BIOL	3.3	90.3%	31	2
ENGL	3.3	93.5%	153	10
ITNW	3.3	100.0%	41	2
COSC	3.2	97.4%	39	2
SLNG	3.2	100.0%	11	1
AUMT	3.1	90.5%	42	3
BMGT	3.1	94.5%	73	3
BUSI	3.1	96.3%	54	2
HART	3.1	100.0%	60	3
WLDG	3.1	87.1%	62	3
ECON	3.0	97.6%	85	4
HIST	2.9	84.1%	113	7
TECM	2.6	100.0%	33	2
MATH	2.0	91.1%	90	6
GRAND TOTAL	3.4	94.7%	2,476	132

Table 10

Lee College - HC/LC

Fall 2004 Grade Distribution Summary

Sorted by Completion Percentage

AREA	AVERAGE GPA	PERCENT COMPLETERS	TOTAL HEADCOUNT	NUMBER SECTIONS
DEMR	3.7	100.0%	78	4
HART	3.1	100.0%	60	3
HUMA	3.7	100.0%	46	2
ITNW	3.3	100.0%	41	2
ITSE	3.7	100.0%	20	1
POFI	3.6	100.0%	21	1
SLNG	3.2	100.0%	11	1
TECM	2.6	100.0%	33	2
HALT	3.6	98.3%	115	6
ITSC	3.6	98.2%	112	6
CETT	3.5	97.6%	42	2
CPMT	3.6	97.6%	168	8
ECON	3.0	97.6%	85	4
COSC	3.2	97.4%	39	2
SOCI	3.5	97.2%	142	6
SPCH	3.8	97.2%	108	6
BUSI	3.1	96.3%	54	2
ACCT	3.6	95.9%	73	3
ITSW	3.8	95.2%	21	1
ARTS	3.3	94.6%	92	4
BMGT	3.1	94.5%	73	3
MUSI	3.7	94.4%	18	1
ENGL	3.3	93.5%	153	10
CVOP	3.4	93.0%	201	14
GEOL	3.5	91.8%	73	3
POFT	3.4	91.5%	47	3
MATH	2.0	91.1%	90	6
AUMT	3.1	90.5%	42	3
PSYC	3.7	90.4%	73	4
BIOL	3.3	90.3%	31	2
GOVT	3.5	90.0%	80	4
ENVR	3.4	88.9%	27	1
ABDR	3.8	87.5%	32	2
WLDG	3.1	87.1%	62	3
HIST	2.9	84.1%	113	7
GRAND TOTAL	3.4	94.7%	2,476	132

Table 11
Lee College - HC/LC
Fall Grade Distribution History Comparison

	Completion Percentage	GPA
Fall 2002	95.0%	3.3
Fall 2003	94.9%	3.4
Fall 2004	94.7%	3.4

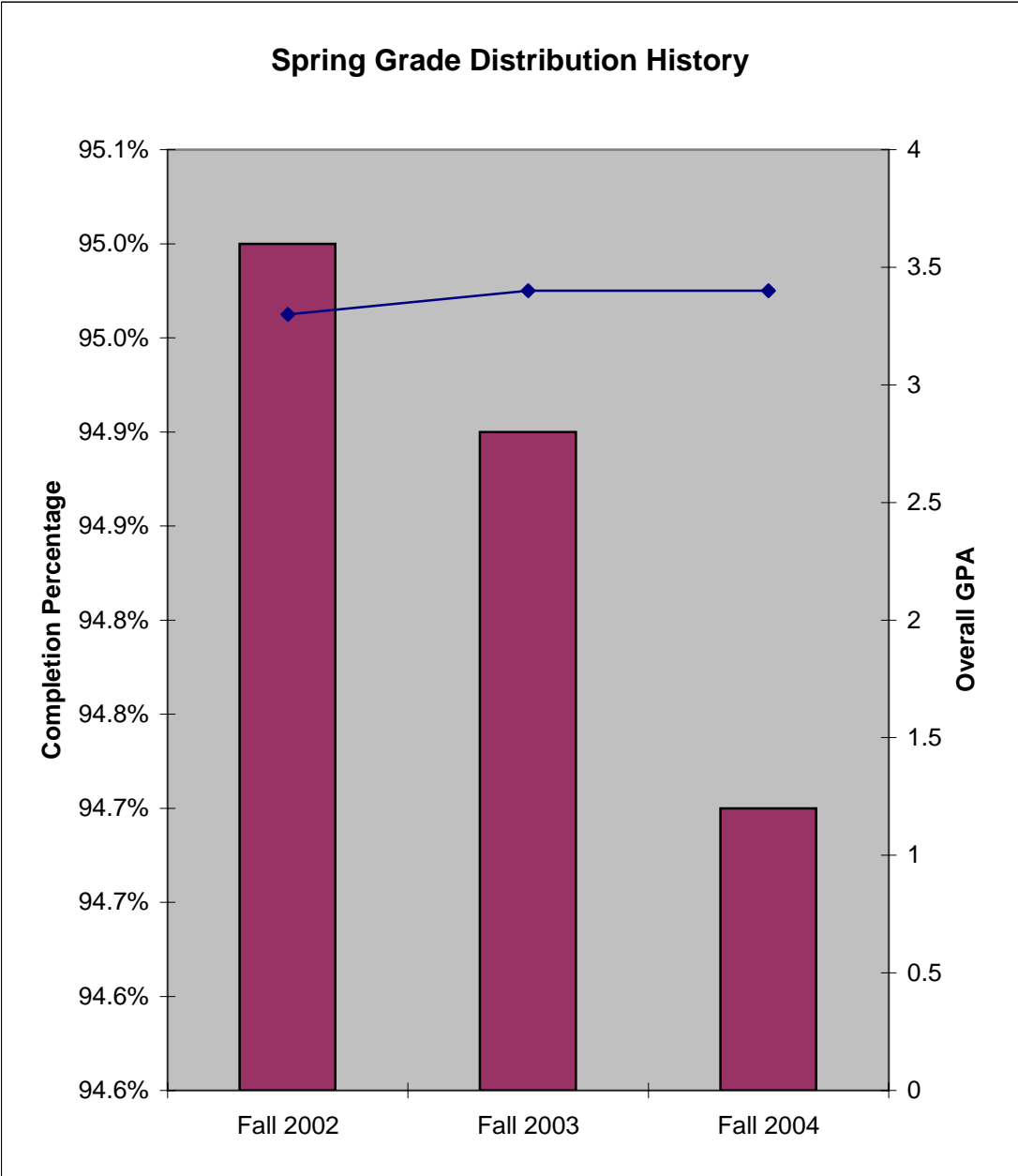


Table 12

Lee College - HC/LC

Fall 2004 Grade Distribution Summary

Fall GPA History

Area	Fall 2004 Average GPA	Fall 2003 Average GPA	1 Yr. Change	Fall 2002 Average GPA	2 Yr. Change
ABDR	3.8	4.0	-0.2	3.8	0.0
ACCT	3.6	3.6	0.0	3.5	0.1
ARTC		3.8			
ARTS	3.3	3.3	0.0		
AUMT	3.1	2.8	0.3	3.0	0.1
BIOL	3.3	3.3	0.0	3.4	-0.1
BMGT	3.1	3.2	-0.1	3.3	-0.2
BUSG				3.5	
BUSI	3.1	3.2	-0.1	3.2	-0.1
CETT	3.5	3.6	-0.1	3.6	-0.1
COSC	3.2	3.7	-0.5	3.3	-0.1
CPMT	3.6	3.7	-0.1	3.9	-0.3
CVOP	3.4	3.7	-0.3	3.4	0.0
DEMR	3.7	3.9	-0.2	3.5	0.2
DLBT		3.5		3.5	
ECON	3.0	3.1	-0.1	3.0	0.0
ENGL	3.3	3.1	0.2	3.3	0.0
ENVR	3.4				
FREN				3.2	
GEOL	3.5	3.4	0.1	3.1	0.4
GOVT	3.5	3.9	-0.4	3.4	0.1
GRPH				3.7	
HALT	3.6	3.7	-0.1	3.9	-0.3
HART	3.1	3.3	-0.2	3.2	-0.1
HIST	2.9	2.9	0.0	3.1	-0.2
HUMA	3.7	4.0	-0.3	3.8	-0.1
ITNW	3.3	3.1	0.2	3.0	0.3
ITSC	3.6	3.1	0.5	3.5	0.1
ITSE	3.7	3.7	0.0	3.7	0.0
ITSW	3.8	3.8	0.0	3.5	0.3
MATH	2.0	2.7	-0.7	2.5	-0.5
MCHN		3.3		2.8	
MUSI	3.7	3.6	0.1	3.6	0.1
POFI	3.6			3.4	0.2
POFT	3.4	3.0	0.4		
PSYC	3.7	3.5	0.2	3.7	0.0
SLNG	3.2				
SOCI	3.5	3.6	-0.1	3.7	-0.2
SPAN		3.0		3.2	
SPCH	3.8	4.0	-0.2	3.1	0.7
TECM	2.6	2.7	-0.1	2.9	-0.3
WLDG	3.1	2.7	0.4	2.9	0.2
GRAND TOTAL	3.4	3.4	0.0	3.3	0.1

Table 13

Lee College - HC/LC

Fall 2004 Grade Distribution Summary

Fall Completion History

Area	Fall 2004 Completers	Fall 2003 Completers	1 Yr. Change	Fall 2002 Completers	2 Yr. Change
ABDR	87.5%	95.8%	-8.3%	94.5%	-7.0%
ACCT	95.9%	94.4%	1.5%	97.8%	-1.9%
ARTC		93.8%			
ARTS	94.6%	94.1%	0.5%		
AUMT	90.5%	89.7%	0.8%	97.2%	-6.7%
BIOL	90.3%	94.0%	-3.7%	91.7%	-1.4%
BMGT	94.5%	94.4%	0.1%	97.0%	-2.5%
BUSG				90.5%	
BUSI	96.3%	97.7%	-1.4%	84.1%	12.2%
CETT	97.6%	100.0%	-2.4%	100.0%	-2.4%
COSC	97.4%	94.6%	2.8%	97.2%	0.2%
CPMT	97.6%	98.2%	-0.6%	99.4%	-1.8%
CVOP	93.0%	100.0%	-7.0%	99.6%	-6.6%
DEMR	100.0%	97.5%	2.5%	100.0%	0.0%
DLBT		92.1%		100.0%	
ECON	97.6%	98.5%	-0.9%	91.3%	6.3%
ENGL	93.5%	94.8%	-1.3%	96.1%	-2.6%
ENVR	88.9%				
FREN				89.9%	
GEOL	91.8%	93.5%	-1.7%	90.9%	0.9%
GOVT	90.0%	93.2%	-3.2%	90.9%	-0.9%
GRPH				100.0%	
HALT	98.3%	97.4%	0.9%	100.0%	-1.7%
HART	100.0%	98.4%	1.6%	100.0%	0.0%
HIST	84.1%	87.4%	-3.3%	89.6%	-5.5%
HUMA	100.0%	96.0%	4.0%	95.8%	4.2%
ITNW	100.0%	100.0%	0.0%	96.7%	3.3%
ITSC	98.2%	97.5%	0.7%	100.0%	-1.8%
ITSE	100.0%	97.0%	3.0%	98.4%	1.6%
ITSW	95.2%	95.7%	-0.5%	100.0%	-4.8%
MATH	91.1%	87.0%	4.1%	93.7%	-2.6%
MCHN		100.0%		92.0%	
MUSI	94.4%	98.2%	-3.8%	96.0%	-1.6%
POFI	100.0%			100.0%	0.0%
POFT	91.5%	93.8%	-2.3%		
PSYC	90.4%	92.9%	-2.5%	97.0%	-6.6%
SLNG	100.0%				
SOCI	97.2%	94.4%	2.8%	98.1%	-0.9%
SPAN		76.4%		100.0%	
SPCH	97.2%	93.9%	3.3%	93.1%	4.1%
TECM	100.0%	100.0%	0.0%	85.9%	14.1%
WLDG	87.1%	96.9%	-9.8%	94.9%	-7.8%
GRAND TOTAL	94.7%	94.9%	-0.2%	96.0%	-1.3%

Table 14
Lee College - HC/LC
Fall 2004 Grade Distribution Summary
Developmental Education Courses

AREA	PERCENT COMPLETERS	TOTAL HEADCOUNT	NUMBER SECTIONS
ENGL	100.0%	24	6
MATH	93.1%	188	23
READ	90.0%	30	8
TOTAL	93.4%	242	37

