

Lee  College

Office of Institutional Research

Grade Distribution Report
Fall 2005

Prepared:
February, 2006

Fall 2005 Grade Distribution Report

The Fall 2005 Grade Distribution Report contains GPA and Completion Percentage data reported by Subject Area. The Fall 2005 data are compared with Fall 2004 and Fall 2003.

The data in this report are summarized from detailed class grade reports produced by the Office of Institutional research. These detailed reports are provided to the President, Deans, and Division Chairs. Faculty members may request detailed information from Division Chairs or from the Office of Institutional Research.

Highlights of the Report

- ⇒ Overall GPA for the Baytown Campus (all students excluding HC/LC) was 2.7, down 0.1 percentage points from Fall 2004 and Fall 2003 (2.8).
- ⇒ Overall percentage of students completing non-developmental classes for the Baytown Campus was 76.3% for Fall 2005, down 2.6 percentage points from Fall 2004 (78.9%), and down by 1.5 percentage points from Fall 2003 (77.8%).
- ⇒ Overall percentage of students completing developmental classes for the Baytown campus was 66.0%.
- ⇒ Overall GPA for HC/LC was 3.4, unchanged from Fall 2004 and Fall 2003.
- ⇒ Overall percentage of students completing non-developmental classes for the HC/LC campus was 96.8%, up 2.1 percentage points from Fall 2004 (94.7) and up 1.9 percentage points from Fall 2003 (94.9).
- ⇒ Overall percentage of students completing developmental classes for the Huntsville campus was 92.2%.

Table Guide

Table	Contents	Site
Table 1	Area Grade Summary By Subject Area	Baytown
Table 2	Area Grade Summary By GPA	Baytown
Table 3	Area Grade Summary By Completion Percentage	Baytown
Table 4	3 Year History Chart - GPA and Completion Percentage	Baytown
Table 5	3 Year Comparison of GPA By Area	Baytown
Table 6	3 Year Comparison of Completion Percentage By Area	Baytown
Table 7	Developmental Education Completion Percentage By Area	Baytown
Table 8	Area Grade Summary By Subject Area	Huntsville
Table 9	Area Grade Summary By GPA	Huntsville
Table 10	Area Grade Summary By Completion Percentage	Huntsville
Table 11	3 Year History Chart - GPA and Completion Percentage	Huntsville
Table 12	3 Year Comparison of GPA By Area	Huntsville
Table 13	3 Year Comparison of Completion Percentage By Area	Huntsville
Table 14	Developmental Education Completion Percentage By Area	Huntsville

Table 1
Lee College - Baytown Campus
Fall 2005 Grade Distribution Summary
Sorted by Area

AREA	AVERAGE GPA	PERCENT COMPLETERS	TOTAL HEADCOUNT	NUMBER SECTIONS
ACCT	2.3	77.9%	140	7
ACNT	3.1	85.2%	108	9
AIRP	3.2	84.4%	45	8
ARCH	2.6	81.2%	69	4
ARTC	2.9	76.9%	13	1
ARTS	2.8	76.2%	273	28
BCIS	2.6	79.0%	62	3
BIBL	3.0	25.0%	4	1
BIOL	2.7	71.2%	955	42
BMGT	2.6	80.5%	113	9
BUSI	2.6	87.2%	149	8
CHEM	2.8	69.5%	128	8
CJSA	3.0	100.0%	1	1
COMM	2.7	68.2%	22	5
COSC	2.8	84.1%	264	14
CPMT	3.3	82.1%	145	10
CRIJ	2.8	76.4%	148	9
CSME	2.9	70.1%	254	27
DAAC	2.9	69.7%	99	10
DFTG	3.3	74.8%	107	11
DRAM	2.9	68.0%	97	8
ECON	2.5	75.2%	157	6
EDUC	3.3	69.0%	84	6
ELPT	3.0	75.1%	245	15
ENGL	2.4	72.7%	1161	67
ENVR	2.8	84.6%	26	2
GEOL	2.7	67.5%	77	4
GOVT	2.2	71.9%	622	21
HIST	2.3	60.4%	750	27
HITT	3.2	72.5%	349	20
HRPO	3.0	80.6%	31	2
HUMA	2.6	70.4%	213	17
INTC	2.8	77.1%	210	15
ITCC	3.7	88.2%	34	3
ITSC	2.7	76.3%	299	13
ITSE	2.2	70.7%	41	4
KINE	3.3	80.5%	604	59
LGLA	3.5	71.7%	113	10
MATH	2.4	61.9%	441	31
MCHN	3.1	68.0%	50	6
MRKG	2.6	82.4%	34	2
MRMT	3.3	76.7%	30	3
MUAP	3.8	67.0%	94	46
MUEN	3.8	80.6%	72	14
MUSI	2.9	73.3%	191	16
NDTE	4.0	85.0%	20	2
PFPB	3.1	70.5%	61	4
PHIL	2.4	75.3%	73	5
PHYS	3.1	87.3%	71	6
POFI	2.9	80.8%	193	12
POFT	3.1	78.5%	331	24
PSYC	2.1	82.1%	569	20
PTAC	2.8	81.5%	493	25
RNSG	2.4	89.6%	1057	47
SCIT	3.0	81.8%	55	3
SGNL	2.8	87.8%	41	3
SOCI	2.2	79.2%	149	9
SOCW	3.9	78.9%	19	1
SPAN	3.1	82.4%	91	5
SPCH	2.6	76.9%	515	25
SPNL	3.1	70.1%	67	3
TECA	3.6	81.4%	140	11
TECM	3.2	76.6%	111	6
VNSG	2.7	87.1%	464	13
WLDG	3.4	83.6%	152	19
Grand Total	2.7	76.3%	13,796	875

Table 2
Lee College - Baytown Campus
Fall 2005 Grade Distribution Summary
Sorted by Average GPA

AREA	AVERAGE GPA	PERCENT COMPLETERS	TOTAL HEADCOUNT	NUMBER SECTIONS
NDTE	4.0	85.0%	20	2
SOCW	3.9	78.9%	19	1
MUAP	3.8	67.0%	94	46
MUEN	3.8	80.6%	72	14
ITCC	3.7	88.2%	34	3
TECA	3.6	81.4%	140	11
LGLA	3.5	71.7%	113	10
WLDG	3.4	83.6%	152	19
CPMT	3.3	82.1%	145	10
DFTG	3.3	74.8%	107	11
EDUC	3.3	69.0%	84	6
KINE	3.3	80.5%	604	59
MRMT	3.3	76.7%	30	3
AIRP	3.2	84.4%	45	8
HITT	3.2	72.5%	349	20
TECM	3.2	76.6%	111	6
ACNT	3.1	85.2%	108	9
MCHN	3.1	68.0%	50	6
PPFB	3.1	70.5%	61	4
PHYS	3.1	87.3%	71	6
POFT	3.1	78.5%	331	24
SPAN	3.1	82.4%	91	5
SPNL	3.1	70.1%	67	3
BIBL	3.0	25.0%	4	1
CJSA	3.0	100.0%	1	1
ELPT	3.0	75.1%	245	15
HRPO	3.0	80.6%	31	2
SCIT	3.0	81.8%	55	3
ARTC	2.9	76.9%	13	1
CSME	2.9	70.1%	254	27
DAAC	2.9	69.7%	99	10
DRAM	2.9	68.0%	97	8
MUSI	2.9	73.3%	191	16
POFI	2.9	80.8%	193	12
ARTS	2.8	76.2%	273	28
CHEM	2.8	69.5%	128	8
COSC	2.8	84.1%	264	14
CRIJ	2.8	76.4%	148	9
ENVR	2.8	84.6%	26	2
INTC	2.8	77.1%	210	15
PTAC	2.8	81.5%	493	25
SGNL	2.8	87.8%	41	3
BIOL	2.7	71.2%	955	42
COMM	2.7	68.2%	22	5
GEOL	2.7	67.5%	77	4
ITSC	2.7	76.3%	299	13
VNSG	2.7	87.1%	464	13
ARCH	2.6	81.2%	69	4
BCIS	2.6	79.0%	62	3
BMGT	2.6	80.5%	113	9
BUSI	2.6	87.2%	149	8
HUMA	2.6	70.4%	213	17
MRKG	2.6	82.4%	34	2
SPCH	2.6	76.9%	515	25
ECON	2.5	75.2%	157	6
ENGL	2.4	72.7%	1161	67
MATH	2.4	61.9%	441	31
PHIL	2.4	75.3%	73	5
RNSG	2.4	89.6%	1057	47
ACCT	2.3	77.9%	140	7
HIST	2.3	60.4%	750	27
GOVT	2.2	71.9%	622	21
ITSE	2.2	70.7%	41	4
SOCI	2.2	79.2%	149	9
PSYC	2.1	82.1%	569	20
Grand Total	2.7	76.3%	13,796	875

Table 3
Lee College - Baytown Campus
Fall 2005 Grade Distribution Summary
Sorted by Completion Percentage

AREA	AVERAGE GPA	PERCENT COMPLETERS	TOTAL HEADCOUNT	NUMBER SECTIONS
CJSA	3.0	100.0%	1	1
RNSG	2.4	89.6%	1057	47
ITCC	3.7	88.2%	34	3
SGNL	2.8	87.8%	41	3
PHYS	3.1	87.3%	71	6
BUSI	2.6	87.2%	149	8
VNSG	2.7	87.1%	464	13
ACNT	3.1	85.2%	108	9
NDTE	4.0	85.0%	20	2
ENVR	2.8	84.6%	26	2
AIRP	3.2	84.4%	45	8
COSC	2.8	84.1%	264	14
WLDG	3.4	83.6%	152	19
SPAN	3.1	82.4%	91	5
MRKG	2.6	82.4%	34	2
CPMT	3.3	82.1%	145	10
PSYC	2.1	82.1%	569	20
SCIT	3.0	81.8%	55	3
PTAC	2.8	81.5%	493	25
TECA	3.6	81.4%	140	11
ARCH	2.6	81.2%	69	4
POFI	2.9	80.8%	193	12
MUEN	3.8	80.6%	72	14
HRPO	3.0	80.6%	31	2
KINE	3.3	80.5%	604	59
BMGT	2.6	80.5%	113	9
SOCI	2.2	79.2%	149	9
BCIS	2.6	79.0%	62	3
SOCW	3.9	78.9%	19	1
POFT	3.1	78.5%	331	24
ACCT	2.3	77.9%	140	7
INTC	2.8	77.1%	210	15
ARTC	2.9	76.9%	13	1
SPCH	2.6	76.9%	515	25
MRMT	3.3	76.7%	30	3
TECM	3.2	76.6%	111	6
CRIJ	2.8	76.4%	148	9
ITSC	2.7	76.3%	299	13
ARTS	2.8	76.2%	273	28
PHIL	2.4	75.3%	73	5
ECON	2.5	75.2%	157	6
ELPT	3.0	75.1%	245	15
DFTG	3.3	74.8%	107	11
MUSI	2.9	73.3%	191	16
ENGL	2.4	72.7%	1161	67
HITT	3.2	72.5%	349	20
GOVT	2.2	71.9%	622	21
LGLA	3.5	71.7%	113	10
BIOL	2.7	71.2%	955	42
ITSE	2.2	70.7%	41	4
PFPB	3.1	70.5%	61	4
HUMA	2.6	70.4%	213	17
SPNL	3.1	70.1%	67	3
CSME	2.9	70.1%	254	27
DAAC	2.9	69.7%	99	10
CHEM	2.8	69.5%	128	8
EDUC	3.3	69.0%	84	6
COMM	2.7	68.2%	22	5
MCHN	3.1	68.0%	50	6
DRAM	2.9	68.0%	97	8
GEOL	2.7	67.5%	77	4
MUAP	3.8	67.0%	94	46
MATH	2.4	61.9%	441	31
HIST	2.3	60.4%	750	27
BIBL	3.0	25.0%	4	1
Grand Total	2.7	76.3%	13,796	875

Table 4
Lee College - Baytown Campus
Fall Grade Distribution History Comparison

	Completion Percentage	GPA
Fall 2003	77.8%	2.8
Fall 2004	78.9%	2.8
Fall 2005	76.3%	2.7

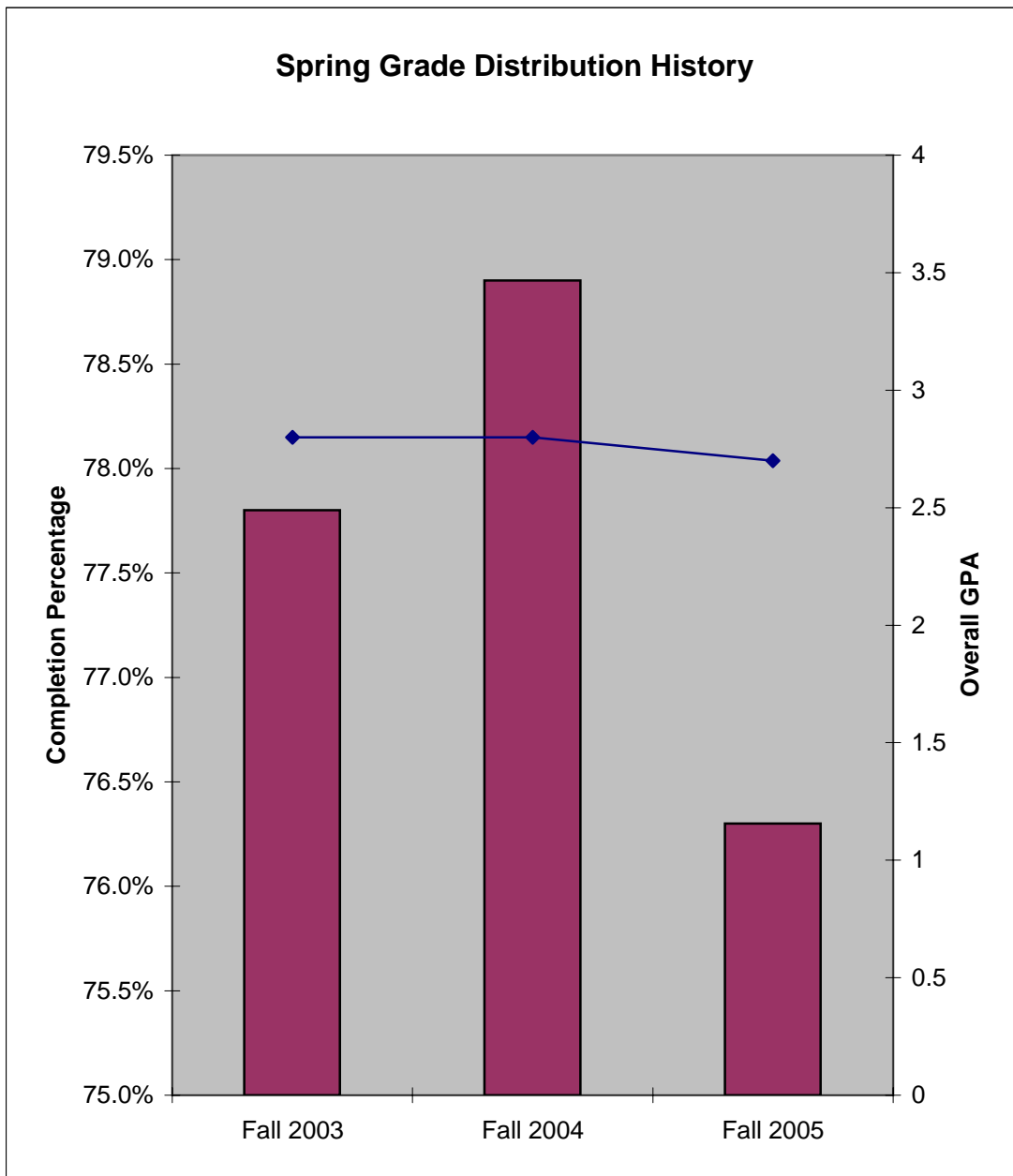


Table 5
Lee College - Baytown Campus
Fall 2005 Grade Distribution Summary
Fall GPA History

Area	Fall 2005 Average GPA	Fall 2004 Average GPA	1 Yr. Change	Fall 2003 Average GPA	2 Yr. Change
ACCT	2.3	2.4	-0.1	2.6	-0.3
ACNT	3.1	2.9	0.2	2.9	0.2
AIRP	3.2	3.3	-0.1	3.6	-0.4
ANTH		2.4		2.6	
ARCH	2.6	3.4	-0.8	3.0	-0.4
ARTC	2.9	4.0	-1.1	3.0	-0.1
ARTS	2.8	3.4	-0.6	3.4	-0.6
BCIS	2.6	3.1	-0.5	3.0	-0.4
BIBL	3.0	3.0	0.0		
BIOL	2.7	2.5	0.2	2.5	0.2
BMGT	2.6	2.7	-0.1	2.9	-0.3
BUSG				4.0	
BUSI	2.6	2.3	0.3	2.5	0.1
CHEM	2.8	3.0	-0.2	3.1	-0.3
CJSA	3.0			4.0	-1.0
COMM	2.7	2.7	0.0	2.4	0.3
COSC	2.8	2.6	0.2	2.8	0.0
CPMT	3.3	3.1	0.2	3.0	0.3
CRIJ	2.8	2.9	-0.1	3.1	-0.3
CSME	2.9	2.8	0.1	3.2	-0.3
CTEC				3.1	
DAAC	2.9	3.2	-0.3	3.4	-0.5
DFTG	3.3	3.1	0.2	2.3	1.0
DRAM	2.9	3.5	-0.6	3.5	-0.6
ECON	2.5	3.0	-0.5	2.7	-0.2
EDUC	3.3	3.1	0.2	3.4	-0.1
ELPT	3.0	3.3	-0.3	3.3	-0.3
EMSP		2.8		2.6	
ENGL	2.4	2.4	0.0	2.3	0.1
ENVR	2.8	3.0	-0.2	2.8	0.0
GEOG		2.6		2.2	
GEOI	2.7	2.5	0.2	2.3	0.4
GOVT	2.2	2.5	-0.3	2.4	-0.2
HART		2.9		1.9	
HIST	2.3	2.3	0.0	2.3	0.0
HITT	3.2	3.2	0.0	3.0	0.2
HRPO	3.0	2.4	0.6	2.9	0.1
HUMA	2.6	2.8	-0.2	2.7	-0.1
IMED		3.6		4.0	
INTC	2.8	2.9	-0.1	3.0	-0.2
ITCC	3.7	3.7	0.0	3.3	0.4
ITNW		3.1		2.7	
ITSC	2.7	2.9	-0.2	2.9	-0.2
ITSE	2.2	2.8	-0.6	2.4	-0.2
ITSW		3.0		2.4	
KINE	3.3	3.2	0.1	3.2	0.1
LGLA	3.5	3.3	0.2	3.4	0.1
MATH	2.4	2.4	0.0	2.4	0.0
MCHN	3.1	3.4	-0.3	3.5	-0.4
MRKG	2.6	3.1	-0.5	4.0	-1.4
MRMT	3.3	3.2	0.1	3.6	-0.3
MUAP	3.8	3.6	0.2	3.5	0.3
MUEN	3.8	3.8	0.0	3.9	-0.1
MUSI	2.9	3.1	-0.2	2.7	0.2
NDTE	4.0	3.7	0.3	4.0	0.0
PFPB	3.1	3.7	-0.6	3.4	-0.3
PHED				3.2	
PHIL	2.4	2.2	0.2	2.4	0.0
PHYS	3.1	3.0	0.1	3.0	0.1
POFI	2.9	3.0	-0.1	3.1	-0.2
POFT	3.1	3.1	0.0	3.0	0.1
PSYC	2.1	2.3	-0.2	2.2	-0.1
PTAC	2.8	2.8	0.0	3.2	-0.4
RNSG	2.4	2.5	-0.1	2.5	-0.1
SCIT	3.0	3.0	0.0	2.9	0.1
SGNL	2.8	2.5	0.3		
SOCI	2.2	2.3	-0.1	2.2	0.0
SOCW	3.9	3.8	0.1		
SPAN	3.1	3.2	-0.1	3.3	-0.2
SPCH	2.6	2.7	-0.1	0.8	1.8
SPNL	3.1	3.4	-0.3	0.9	2.2
TECA	3.6	3.4	0.2	3.4	0.2
TECM	3.2	2.9	0.3	2.1	1.1
VNSG	2.7	2.8	-0.1	2.7	0.0
WLDG	3.4	3.3	0.1	3.5	-0.1
Grand Total	2.7	2.8	-0.1	2.8	-0.1

Table 6
Lee College - Baytown Campus
Fall 2005 Grade Distribution Summary
Fall Completion History

Area	Fall 2005 Completers	Fall 2004 Completers	1 Yr. Change	Fall 2003 Completers	2 Yr. Change
ACCT	77.9%	77.0%	0.9%	78.3%	-0.4%
ACNT	85.2%	81.1%	4.1%	84.2%	1.0%
AIRP	77.9%	90.6%	-12.7%	95.5%	-17.6%
ANTH		91.7%		81.8%	
ARCH	81.2%	68.4%	12.8%	74.6%	6.6%
ARTC	76.9%	100.0%	-23.1%	73.7%	3.2%
ARTS	76.2%	75.3%	0.9%	71.1%	5.1%
BCIS	79.0%	85.7%	-6.7%	81.0%	-2.0%
BIBL	25.0%	66.7%	-41.7%		
BIOL	71.2%	72.4%	-1.2%	68.7%	2.5%
BMTG	80.5%	81.0%	-0.5%	75.6%	4.9%
BUSG				100.0%	
BUSI	87.2%	82.3%	4.9%	74.1%	13.1%
CHEM	69.5%	82.7%	-13.2%	82.2%	-12.7%
CJSA	100.0%			100.0%	0.0%
COMM	68.2%	68.3%	-0.1%	66.7%	1.5%
COSC	84.1%	82.4%	1.7%	86.4%	-2.3%
CPMT	82.1%	85.4%	-3.3%	77.6%	4.5%
CRIJ	76.4%	81.5%	-5.1%	82.5%	-6.1%
CSME	70.1%	74.3%	-4.2%	67.7%	2.4%
CTEC				91.7%	
DAAC	69.7%	79.3%	-9.6%	73.0%	-3.3%
DFTG	74.8%	74.2%	0.6%	85.3%	-10.5%
DRAM	68.0%	75.8%	-7.8%	77.3%	-9.3%
ECON	75.2%	84.8%	-9.6%	65.7%	9.5%
EDUC	69.0%	84.7%	-15.7%	91.9%	-22.9%
ELPT	75.1%	80.6%	-5.5%	75.8%	-0.7%
EMSP		54.7%		45.1%	
ENGL	72.7%	72.1%	0.6%	74.2%	-1.5%
ENVR	84.6%	66.7%	17.9%	62.1%	22.5%
GEOG		93.5%		94.1%	
GEOI	67.5%	42.6%	24.9%	46.3%	21.2%
GOVT	71.9%	74.2%	-2.3%	77.0%	-5.1%
HART		100.0%		73.0%	
HIST	60.4%	72.7%	-12.3%	70.2%	-9.8%
HITT	72.5%	76.9%	-4.4%	74.1%	-1.6%
HRPO	80.6%	81.3%	-0.7%	67.5%	13.1%
HUMA	70.4%	78.5%	-8.1%	72.7%	-2.3%
IMED		100.0%		58.3%	
INTC	77.1%	82.9%	-5.8%	80.9%	-3.8%
ITCC	88.2%	81.8%	6.4%	79.5%	8.7%
ITNW		90.0%		100.0%	
ITSC	76.3%	82.4%	-6.1%	85.3%	-9.0%
ITSE	70.7%	83.3%	-12.6%	56.4%	14.3%
ITSW		87.0%		91.4%	
KINE	80.5%	79.4%	1.1%	79.0%	1.5%
LGLA	71.7%	83.1%	-11.4%	93.6%	-21.9%
MATH	61.9%	63.0%	-1.1%	61.5%	0.4%
MCHN	68.0%	75.0%	-7.0%	79.4%	-11.4%
MRKG	82.4%	76.2%	6.2%	100.0%	-17.6%
MRMT	76.7%	81.1%	-4.4%	80.0%	-3.3%
MUAP	67.0%	82.3%	-15.3%	78.8%	-11.8%
MUEN	80.6%	93.0%	-12.4%	89.5%	-8.9%
MUSI	73.3%	90.7%	-17.4%	83.1%	-9.8%
NDTE	85.0%	86.7%	-1.7%	81.8%	3.2%
PFPB	70.5%	62.8%	7.7%	84.7%	-14.2%
PHED				69.3%	
PHIL	75.3%	71.4%	3.9%	74.7%	0.6%
PHYS	87.3%	81.6%	5.7%	87.8%	-0.5%
POFI	80.8%	83.8%	-3.0%	86.2%	-5.4%
POFT	78.5%	82.4%	-3.9%	89.1%	-10.6%
PSYC	82.1%	83.0%	-0.9%	79.8%	2.3%
PTAC	81.5%	83.9%	-2.4%	79.4%	2.1%
RNSG	89.6%	90.2%	-0.6%	88.7%	0.9%
SCIT	81.8%	87.5%	-5.7%	78.1%	3.7%
SGNL	87.8%	91.3%	-3.5%		
SOCI	79.2%	89.6%	-10.4%	79.7%	-0.5%
SOCW	78.9%	62.5%	16.4%		
SPAN	82.4%	76.8%	5.6%	67.0%	15.4%
SPCH	76.9%	77.5%	-0.6%	79.2%	-2.3%
SPNL	70.1%	73.9%	-3.8%	85.2%	-15.1%
TECA	81.4%	88.5%	-7.1%	89.3%	-7.9%
TECM	76.6%	78.4%	-1.8%	76.9%	-0.3%
VNSG	87.1%	88.3%	-1.2%	93.0%	-5.9%
WLDG	83.6%	86.4%	-2.8%	76.3%	7.3%
GRAND TOTAL	76.3%	78.9%	-2.6%	77.8%	-1.5%

Table 7

**Lee College - Baytown Campus
Fall 2005 Grade Distribution Summary
Developmental Education Courses**

AREA	PERCENT COMPLETERS	TOTAL HEADCOUNT	NUMBER SECTIONS
COSS	79.5%	166	14
ENGL	78.0%	168	13
MATH	60.0%	892	75
READ	69.2%	328	17
TOTAL	66.0%	1,554	119

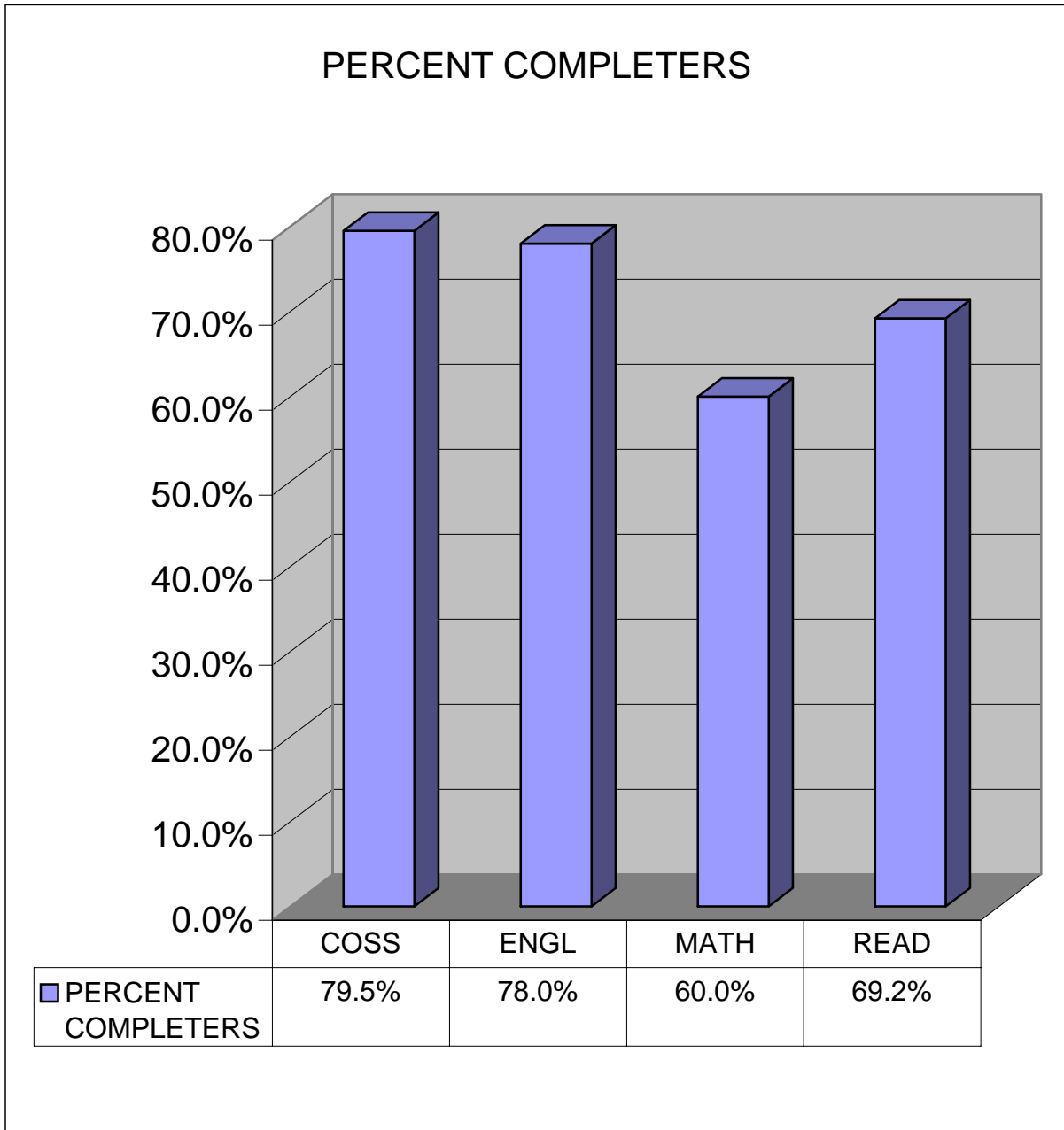


Table 8

Lee College - HC/LC

Fall 2005 Grade Distribution Summary

Sorted by Area

AREA	AVERAGE GPA	PERCENT COMPLETERS	TOTAL HEADCOUNT	NUMBER SECTIONS
ABDR	3.3	84.6%	39	5
AUMT	3.1	98.0%	51	3
BIOL	3.1	85.4%	48	2
BUSI	3.7	94.7%	19	1
CETT	3.1	100.0%	14	1
COSC	3.1	93.7%	63	4
CPMT	3.5	100.0%	56	4
CRPT	4.0	88.2%	17	1
CVOP	3.6	100.0%	221	14
DEMR	3.8	98.2%	55	4
ENGL	3.3	97.7%	131	8
ENVR	3.7	100.0%	23	1
GOVT	3.4	95.8%	96	5
HALT	3.7	100.0%	89	6
HART	3.1	100.0%	32	3
ITNW	3.2	100.0%	40	2
ITSC	3.8	100.0%	36	2
ITSE	3.6	100.0%	50	3
ITSW	3.7	97.1%	35	2
MATH	2.2	100.0%	50	3
POFI	3.3	100.0%	20	1
PSYC	3.7	89.1%	46	2
SOCI	3.6	87.2%	47	2
TECM	4.0	88.2%	17	1
WLDG	2.9	98.3%	60	3
GRAND TOTAL	3.4	96.8%	1,355	83

Table 9

Lee College - HC/LC

Fall 2005 Grade Distribution Summary

Sorted by Average GPA

AREA	AVERAGE GPA	PERCENT COMPLETERS	TOTAL HEADCOUNT	NUMBER SECTIONS
CRPT	4.0	88.2%	17	1
TECM	4.0	88.2%	17	1
DEMR	3.8	98.2%	55	4
ITSC	3.8	100.0%	36	2
BUSI	3.7	94.7%	19	1
ENVR	3.7	100.0%	23	1
HALT	3.7	100.0%	89	6
ITSW	3.7	97.1%	35	2
PSYC	3.7	89.1%	46	2
CVOP	3.6	100.0%	221	14
ITSE	3.6	100.0%	50	3
SOCI	3.6	87.2%	47	2
CPMT	3.5	100.0%	56	4
GOVT	3.4	95.8%	96	5
ABDR	3.3	84.6%	39	5
ENGL	3.3	97.7%	131	8
POFI	3.3	100.0%	20	1
ITNW	3.2	100.0%	40	2
AUMT	3.1	98.0%	51	3
BIOL	3.1	85.4%	48	2
CETT	3.1	100.0%	14	1
COSC	3.1	93.7%	63	4
HART	3.1	100.0%	32	3
WLDG	2.9	98.3%	60	3
MATH	2.2	100.0%	50	3
GRAND TOTAL	3.4	96.8%	1,355	83

Table 10

Lee College - HC/LC

Fall 2005 Grade Distribution Summary

Sorted by Completion Percentage

AREA	AVERAGE GPA	PERCENT COMPLETERS	TOTAL HEADCOUNT	NUMBER SECTIONS
CETT	3.1	100.0%	14	1
CPMT	3.5	100.0%	56	4
CVOP	3.6	100.0%	221	14
ENVR	3.7	100.0%	23	1
HALT	3.7	100.0%	89	6
HART	3.1	100.0%	32	3
ITNW	3.2	100.0%	40	2
ITSC	3.8	100.0%	36	2
ITSE	3.6	100.0%	50	3
MATH	2.2	100.0%	50	3
POFI	3.3	100.0%	20	1
WLDG	2.9	98.3%	60	3
DEMR	3.8	98.2%	55	4
AUMT	3.1	98.0%	51	3
ENGL	3.3	97.7%	131	8
ITSW	3.7	97.1%	35	2
GOVT	3.4	95.8%	96	5
BUSI	3.7	94.7%	19	1
COSC	3.1	93.7%	63	4
PSYC	3.7	89.1%	46	2
CRPT	4.0	88.2%	17	1
TECM	4.0	88.2%	17	1
SOCI	3.6	87.2%	47	2
BIOL	3.1	85.4%	48	2
ABDR	3.3	84.6%	39	5
GRAND TOTAL	3.4	96.8%	1,355	83

Table 11
Lee College - HC/LC
Fall Grade Distribution History Comparison

	Completion Percentage	GPA
Fall 2003	94.9%	3.4
Fall 2004	94.7%	3.4
Fall 2005	96.8%	3.4

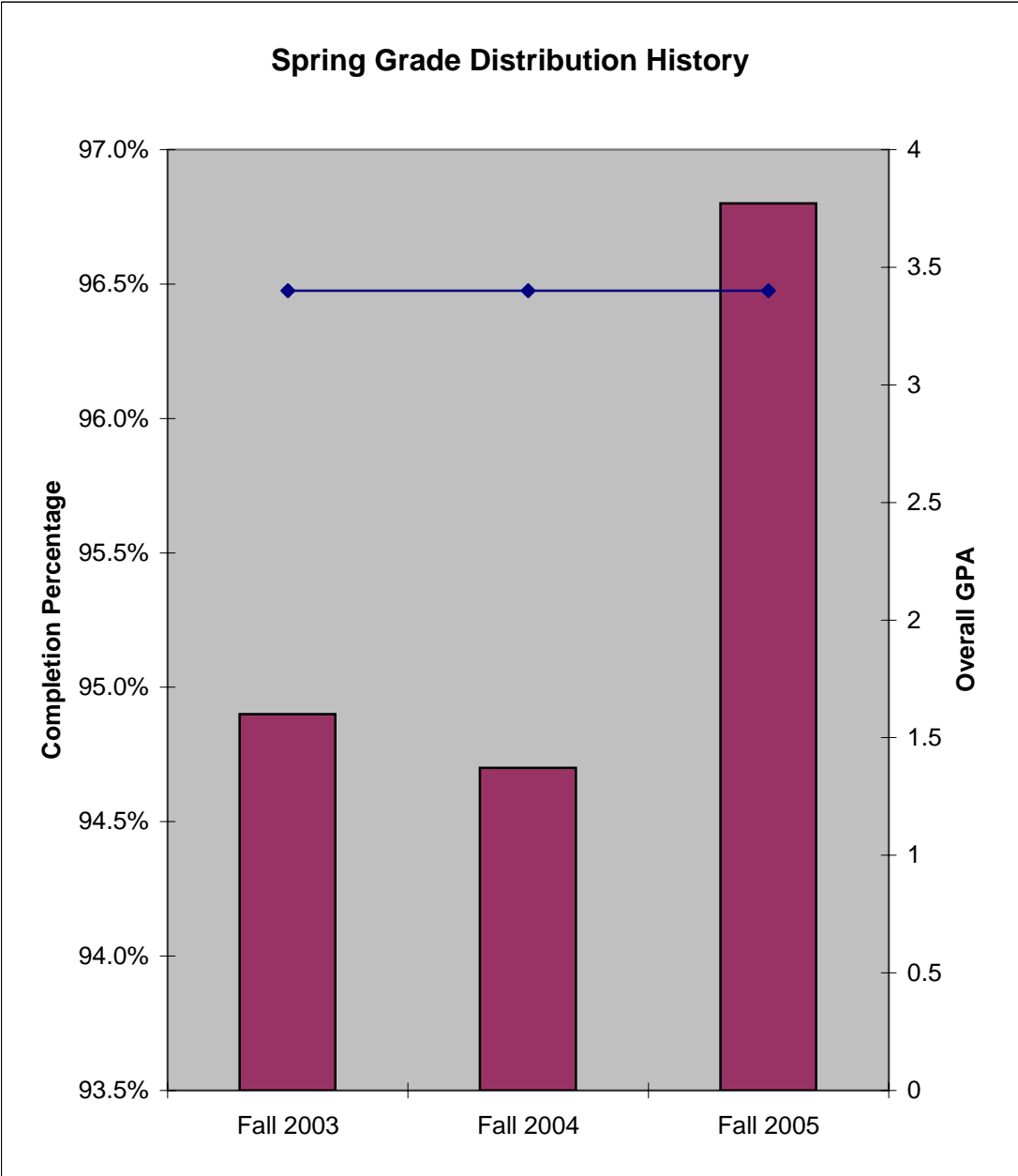


Table 12

Lee College - HC/LC

Fall 2005 Grade Distribution Summary

Fall GPA History

Area	Fall 2005 Average GPA	Fall 2004 Average GPA	1 Yr. Change	Fall 2003 Average GPA	2 Yr. Change
ABDR	3.3	3.8	-0.5	4.0	-0.7
ACCT		3.6		3.6	
ARTC				3.8	
ARTS		3.3		3.3	
AUMT	3.1	3.1	0.0	2.8	0.3
BIOL	3.1	3.3	-0.2	3.3	-0.2
BMGT		3.1		3.2	
BUSI	3.7	3.1	0.6	3.2	0.5
CETT	3.1	3.5	-0.4	3.6	-0.5
COSC	3.1	3.2	-0.1	3.7	-0.6
CPMT	3.5	3.6	-0.1	3.7	-0.2
CRPT	4.0				
CVOP	3.6	3.4	0.2	3.7	-0.1
DEMR	3.8	3.7	0.1	3.9	-0.1
DLBT				3.5	
ECON		3.0		3.1	
ENGL	3.3	3.3	0.0	3.1	0.2
ENVR	3.7	3.4	0.3		
GEOL		3.5		3.4	
GOVT	3.4	3.5	-0.1	3.9	-0.5
HALT	3.7	3.6	0.1	3.7	0.0
HART	3.1	3.1	0.0	3.3	-0.2
HIST		2.9		2.9	
HUMA		3.7		4.0	
ITNW	3.2	3.3	-0.1	3.1	0.1
ITSC	3.8	3.6	0.2	3.1	0.7
ITSE	3.6	3.7	-0.1	3.7	-0.1
ITSW	3.7	3.8	-0.1	3.8	-0.1
MATH	2.2	2.0	0.2	2.7	-0.5
MCHN				3.3	
MUSI		3.7		3.6	
POFI	3.3	3.6	-0.3		
POFT		3.4		3.0	
PSYC	3.7	3.7	0.0	3.5	0.2
SLNG		3.2			
SOCI	3.6	3.5	0.1	3.6	0.0
SPAN				3.0	
SPCH		3.8		4.0	
TECM	4.0	2.6	1.4	2.7	1.3
WLDG	2.9	3.1	-0.2	2.7	0.2
GRAND TOTAL	3.4	3.4	0.0	3.4	0.0

Table 13

Lee College - HC/LC

Fall 2005 Grade Distribution Summary

Fall Completion History

Area	Fall 2005 Completers	Fall 2004 Completers	1 Yr. Change	Fall 2003 Completers	2 Yr. Change
ABDR	84.6%	87.5%	-2.9%	95.8%	-11.2%
ACCT		95.9%		94.4%	
ARTC				93.8%	
ARTS		94.6%		94.1%	
AUMT	98.0%	90.5%	7.5%	89.7%	8.3%
BIOL	85.4%	90.3%	-4.9%	94.0%	-8.6%
BMGT		94.5%		94.4%	
BUSI	94.7%	96.3%	-1.6%	97.7%	-3.0%
CETT	100.0%	97.6%	2.4%	100.0%	0.0%
COSC	93.7%	97.4%	-3.7%	94.6%	-0.9%
CPMT	100.0%	97.6%	2.4%	98.2%	1.8%
CRPT	88.2%				
CVOP	100.0%	93.0%	7.0%	100.0%	0.0%
DEMR	98.2%	100.0%	-1.8%	97.5%	0.7%
DLBT				92.1%	
ECON		97.6%		98.5%	
ENGL	97.7%	93.5%	4.2%	94.8%	2.9%
ENVR	100.0%	88.9%	11.1%		
GEOL		91.8%		93.5%	
GOVT	95.8%	90.0%	5.8%	93.2%	2.6%
HALT	100.0%	98.3%	1.7%	97.4%	2.6%
HART	100.0%	100.0%	0.0%	98.4%	1.6%
HIST		84.1%		87.4%	
HUMA		100.0%		96.0%	
ITNW	100.0%	100.0%	0.0%	100.0%	0.0%
ITSC	100.0%	98.2%	1.8%	97.5%	2.5%
ITSE	100.0%	100.0%	0.0%	97.0%	3.0%
ITSW	97.1%	95.2%	1.9%	95.7%	1.4%
MATH	100.0%	91.1%	8.9%	87.0%	13.0%
MCHN				100.0%	-100.0%
MUSI		94.4%		98.2%	
POFI	100.0%	100.0%	0.0%		
POFT		91.5%		93.8%	
PSYC	89.1%	90.4%	-1.3%	92.9%	-3.8%
SLNG		100.0%			
SOCI	87.2%	97.2%	-10.0%	94.4%	-7.2%
SPAN				76.4%	
SPCH		97.2%		93.9%	
TECM	88.2%	100.0%	-11.8%	100.0%	-11.8%
WLDG	98.3%	87.1%	11.2%	96.9%	1.4%
GRAND TOTAL	96.8%	94.7%	2.1%	94.9%	1.9%

Table 14
Lee College - HC/LC
Fall 2005 Grade Distribution Summary
Developmental Education Courses

AREA	PERCENT COMPLETERS	TOTAL HEADCOUNT	NUMBER SECTIONS
ENGL	92.9%	14	2
MATH	92.1%	76	15
TOTAL	92.2%	90	17

