



Grade Distribution Report

Spring 2007







Prepared:
January, 2008

Spring 2007 Grade Distribution Report

The Spring 2007 Grade Distribution Report contains GPA and Completion Percentage data reported by Subject Area. The Spring 2007 data are compared with Spring 2006 and Spring 2005.

The data in this report are summarized from detailed class grade reports produced by the Office of Institutional research. These detailed reports are provided to the President, Deans, and Division Chairs. Faculty members may request detailed information from Division Chairs or from the Office of Institutional Research.

Highlights of the Report

-  Overall GPA for the Baytown Campus (all students excluding Huntsville) was 2.8, unchanged from Spring 2006 and Spring 2005.
-  Overall percentage of students completing non-developmental classes for the Baytown Campus was 75.3% for Spring 2007, down 0.6% from Spring 2006 (75.9%), and down 1.8% from Spring 2005 (77.1%).
-  Overall percentage of students completing developmental classes for the Baytown campus was 59.7%.
-  Overall GPA for the Huntsville campus was 3.4, unchanged from Spring 2006, and up from 3.3 in Spring 2005.
-  Overall percentage of students completing non-developmental classes for the Huntsville campus was 95.0%, down 1.2% from Spring 2006 (96.2%), and up 0.4% from Spring 2005 (94.6%).
-  Overall percentage of students completing developmental classes for the Huntsville campus was 90.6%.

Table/Chart Guide

Table/Chart	Contents	Campus	Page
Table 1	Area Grade Summary By Subject Area	Baytown	2
Table 2	Area Grade Summary By Average GPA	Baytown	3
Table 3	Area Grade Summary By Completion Percentage	Baytown	4
Table 4/Chart 1	Three Year Comparison By Completion Percentage & GPA	Baytown	5
Table 5	Three Year Comparison of GPA By Subject Area	Baytown	6
Table 6	Three Year Comparison of Completion Percentages By Subject Area	Baytown	7
Table 7/Chart 2	Developmental Education Completion Percentage By Subject Area	Baytown	8
Table 8	Area Grade Summary By Subject Area	Huntsville	9
Table 9	Area Grade Summary By Average GPA	Huntsville	10
Table 10	Area Grade Summary By Completion Percentage	Huntsville	11
Table 11/Chart 3	Three Year Comparison By Completion Percentage & GPA	Huntsville	12
Table 12	Three Year Comparison of GPA By Subject Area	Huntsville	13
Table 13	Three Year Comparison of Completion Percentages By Subject Area	Huntsville	14
Table 14/Chart 4	Developmental Education Completion Percentage By Area	Huntsville	15

Area Grade Summary By Subject Area
Lee College - Baytown Campus
Spring 2007 Grade Distribution Summary
Table 1

Subject Area	Average GPA	Percent of Completers	Total Headcount	Number of Sections
ACCT	2.4	77.4%	133	8
ACNT	2.9	82.2%	90	8
AIRP	3.7	84.6%	39	8
ANTH	4.0	100.0%	1	1
ARCE	2.0	50.0%	14	1
ARCH	3.0	57.9%	38	5
ARTC	3.9	85.0%	20	3
ARTS	3.2	68.6%	274	36
BCIS	2.1	73.1%	160	7
BIBL	3.0	66.7%	3	1
BIOL	2.8	73.7%	806	41
BMGT	3.4	82.8%	128	10
BUSG	2.8	45.8%	24	1
BUSI	2.1	80.9%	183	10
CHEM	2.7	65.9%	126	9
COMM	3.5	76.7%	43	7
COSC	2.8	60.7%	178	12
CPMT	3.2	79.1%	134	10
CRIJ	3.1	76.5%	149	11
CSME	3.0	76.4%	254	33
DAAC	3.1	65.8%	146	12
DFTG	3.3	78.1%	265	22
DRAM	3.3	70.3%	118	11
ECON	2.4	74.9%	175	7
EDUC	3.6	63.8%	47	4
ELPT	2.9	72.2%	281	16
ENGL	2.3	67.3%	935	70
ENVR	2.8	76.5%	34	3
GEOG	2.6	86.5%	37	2
GEOI	2.9	84.4%	90	4
GOVT	2.2	73.3%	561	21
HIST	2.4	65.1%	611	29
HITT	3.2	71.0%	300	20
HRPO	2.7	77.3%	66	3
HUMA	2.9	64.3%	185	15
HYDR	3.9	88.9%	9	1
IMED	3.7	56.3%	16	4
INTC	3.0	75.9%	241	14
ITCC	3.0	78.0%	59	8
ITSC	2.7	65.6%	247	14
ITSE	0.0	100.0%	1	1
KINE	3.4	76.7%	618	73
LGLA	3.5	77.9%	77	9
MATH	2.4	63.1%	396	35
MCHN	3.1	74.3%	74	7
MRKG	3.0	55.6%	9	2
MRMT	3.4	79.4%	34	5
MUAP	3.7	77.1%	105	63
MUEN	3.7	82.4%	68	12
MUSI	2.3	83.7%	196	15
NDTE	3.5	85.2%	27	2
OSHT	2.9	63.8%	69	6
PFPB	3.3	73.6%	178	12
PHIL	3.0	75.0%	88	6
PHYS	3.2	78.1%	64	4
POFI	2.7	83.4%	163	11
POFT	3.1	78.3%	368	26
PSYC	2.4	77.4%	455	25
PTAC	2.5	85.6%	521	26
RNSG	2.7	88.5%	754	34
SCIT	2.7	83.0%	53	2
SGNL	3.0	83.6%	55	6
SOCI	2.7	76.0%	167	8
SOCW	3.7	42.9%	7	1
SPAN	3.0	67.1%	85	8
SPCH	2.4	74.5%	380	23
SPNL	3.3	72.9%	70	3
TECA	3.8	80.8%	78	8
TECM	2.9	72.1%	154	6
VNSG	2.9	97.1%	486	21
WLDG	3.4	72.8%	316	28
Grand Total	2.8	75.3%	13,336	990

Area Grade Summary By Average GPA
Lee College - Baytown Campus
Spring 2007 Grade Distribution Summary
Table 2

Subject Area	Average GPA	Percent of Completers	Total Headcount	Number of Sections
ANTH	4.0	100.0%	1	1
ARTC	3.9	85.0%	20	3
HYDR	3.9	88.9%	9	1
TECA	3.8	80.8%	78	8
AIRP	3.7	84.6%	39	8
IMED	3.7	56.3%	16	4
MUAP	3.7	77.1%	105	63
MUEN	3.7	82.4%	68	12
SOCW	3.7	42.9%	7	1
EDUC	3.6	63.8%	47	4
COMM	3.5	76.7%	43	7
LGLA	3.5	77.9%	77	9
NDTE	3.5	85.2%	27	2
BMGT	3.4	82.8%	128	10
KINE	3.4	76.7%	618	73
MRMT	3.4	79.4%	34	5
WLDG	3.4	72.8%	316	28
DFTG	3.3	78.1%	265	22
DRAM	3.3	70.3%	118	11
PFPB	3.3	73.6%	178	12
SPNL	3.3	72.9%	70	3
ARTS	3.2	68.6%	274	36
CPMT	3.2	79.1%	134	10
HITT	3.2	71.0%	300	20
PHYS	3.2	78.1%	64	4
CRIJ	3.1	76.5%	149	11
DAAC	3.1	65.8%	146	12
MCHN	3.1	74.3%	74	7
POFT	3.1	78.3%	368	26
ARCH	3.0	57.9%	38	5
BIBL	3.0	66.7%	3	1
CSME	3.0	76.4%	254	33
INTC	3.0	75.9%	241	14
ITCC	3.0	78.0%	59	8
MRKG	3.0	55.6%	9	2
PHIL	3.0	75.0%	88	6
SGNL	3.0	83.6%	55	6
SPAN	3.0	67.1%	85	8
ACNT	2.9	82.2%	90	8
ELPT	2.9	72.2%	281	16
GEOG	2.9	84.4%	90	4
HUMA	2.9	64.3%	185	15
OSHT	2.9	63.8%	69	6
TECM	2.9	72.1%	154	6
VNSG	2.9	97.1%	486	21
BIOL	2.8	73.7%	806	41
BUSG	2.8	45.8%	24	1
COSC	2.8	60.7%	178	12
ENVR	2.8	76.5%	34	3
CHEM	2.7	65.9%	126	9
HRPO	2.7	77.3%	66	3
ITSC	2.7	65.6%	247	14
POFI	2.7	83.4%	163	11
RNSG	2.7	88.5%	754	34
SCIT	2.7	83.0%	53	2
SOCI	2.7	76.0%	167	8
GEOG	2.6	86.5%	37	2
PTAC	2.5	85.6%	521	26
ACCT	2.4	77.4%	133	8
ECON	2.4	74.9%	175	7
HIST	2.4	65.1%	611	29
MATH	2.4	63.1%	396	35
PSYC	2.4	77.4%	455	25
SPCH	2.4	74.5%	380	23
ENGL	2.3	67.3%	935	70
MUSI	2.3	83.7%	196	15
GOVT	2.2	73.3%	561	21
BCIS	2.1	73.1%	160	7
BUSI	2.1	80.9%	183	10
ARCE	2.0	50.0%	14	1
ITSE	0.0	100.0%	1	1
Grand Total	2.8	75.3%	13,336	990

Area Grade Summary By Completion Percentage
Lee College - Baytown Campus
Spring 2007 Grade Distribution Summary
Table 3

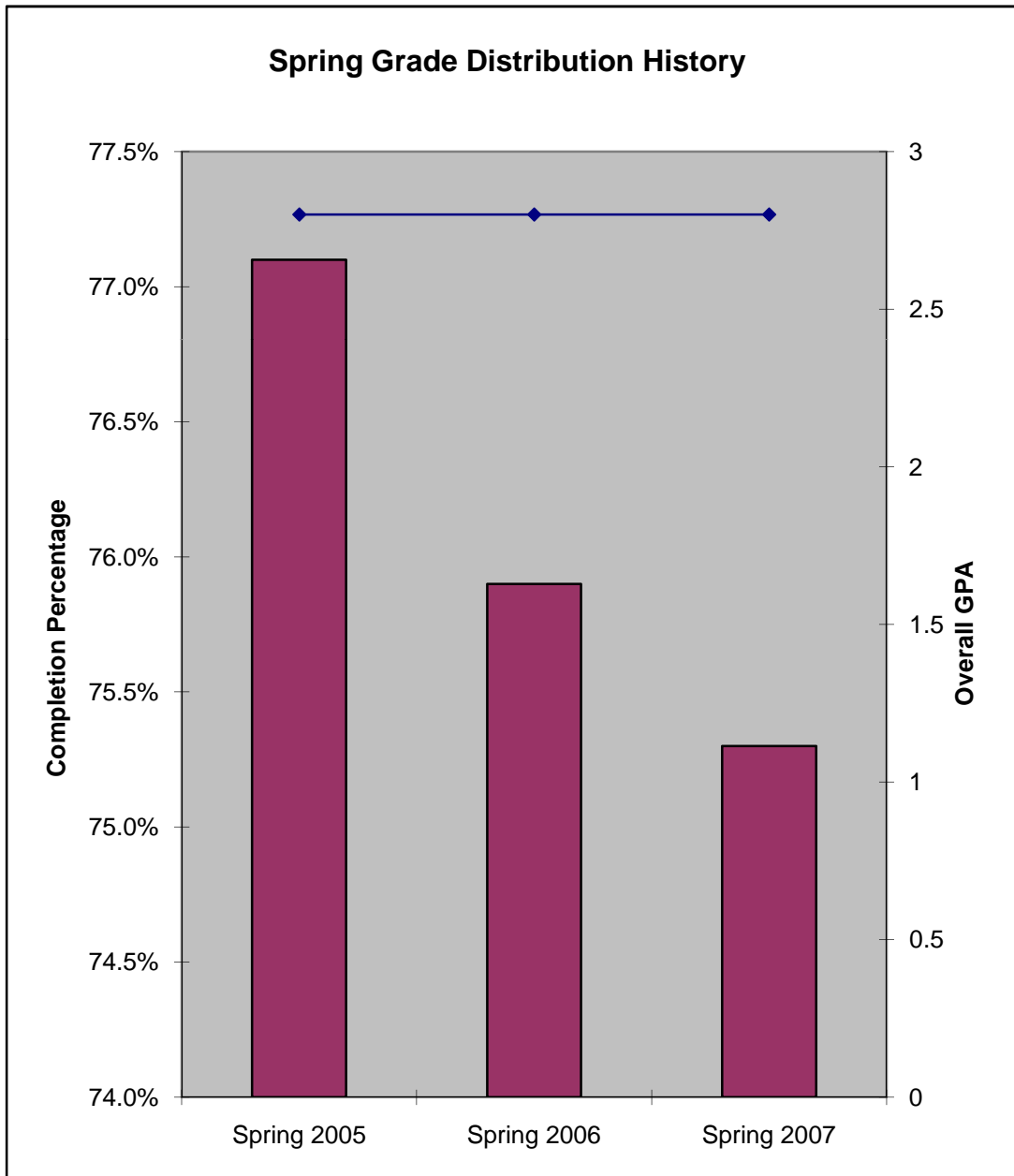
Subject Area	Average GPA	Percent of Completers	Total Headcount	Number of Sections
ANTH	4.0	100.0%	1	1
ITSE	0.0	100.0%	1	1
VNSG	2.9	97.1%	486	21
HYDR	3.9	88.9%	9	1
RNSG	2.7	88.5%	754	34
GEOG	2.6	86.5%	37	2
PTAC	2.5	85.6%	521	26
NDTE	3.5	85.2%	27	2
ARTC	3.9	85.0%	20	3
AIRP	3.7	84.6%	39	8
GEOG	2.9	84.4%	90	4
MUSI	2.3	83.7%	196	15
SGNL	3.0	83.6%	55	6
POFI	2.7	83.4%	163	11
SCIT	2.7	83.0%	53	2
BMGT	3.4	82.8%	128	10
MUEN	3.7	82.4%	68	12
ACNT	2.9	82.2%	90	8
BUSI	2.1	80.9%	183	10
TECA	3.8	80.8%	78	8
MRMT	3.4	79.4%	34	5
CPMT	3.2	79.1%	134	10
POFT	3.1	78.3%	368	26
DFTG	3.3	78.1%	265	22
PHYS	3.2	78.1%	64	4
ITCC	3.0	78.0%	59	8
LGLA	3.5	77.9%	77	9
ACCT	2.4	77.4%	133	8
PSYC	2.4	77.4%	455	25
HRPO	2.7	77.3%	66	3
MUAP	3.7	77.1%	105	63
COMM	3.5	76.7%	43	7
KINE	3.4	76.7%	618	73
CRIJ	3.1	76.5%	149	11
ENVR	2.8	76.5%	34	3
CSME	3.0	76.4%	254	33
SOCI	2.7	76.0%	167	8
INTC	3.0	75.9%	241	14
PHIL	3.0	75.0%	88	6
ECON	2.4	74.9%	175	7
SPCH	2.4	74.5%	380	23
MCHN	3.1	74.3%	74	7
BIOL	2.8	73.7%	806	41
PFPB	3.3	73.6%	178	12
GOVT	2.2	73.3%	561	21
BCIS	2.1	73.1%	160	7
SPNL	3.3	72.9%	70	3
WLDG	3.4	72.8%	316	28
ELPT	2.9	72.2%	281	16
TECM	2.9	72.1%	154	6
HITT	3.2	71.0%	300	20
DRAM	3.3	70.3%	118	11
ARTS	3.2	68.6%	274	36
ENGL	2.3	67.3%	935	70
SPAN	3.0	67.1%	85	8
BIBL	3.0	66.7%	3	1
CHEM	2.7	65.9%	126	9
DAAC	3.1	65.8%	146	12
ITSC	2.7	65.6%	247	14
HIST	2.4	65.1%	611	29
HUMA	2.9	64.3%	185	15
EDUC	3.6	63.8%	47	4
OSHT	2.9	63.8%	69	6
MATH	2.4	63.1%	396	35
COSC	2.8	60.7%	178	12
ARCH	3.0	57.9%	38	5
IMED	3.7	56.3%	16	4
MRKG	3.0	55.6%	9	2
ARCE	2.0	50.0%	14	1
BUSG	2.8	45.8%	24	1
SOCW	3.7	42.9%	7	1
Grand Total	2.8	75.3%	13,336	990

Three Year Comparison By Completion Percentage & GPA

Lee College - Baytown Campus
Spring Grade Distribution History

Table 4/Chart 1

	Completion Percentage	GPA
Spring 2005	77.1%	2.8
Spring 2006	75.9%	2.8
Spring 2007	75.3%	2.8



Three Year Comparison of GPA By Subject Area
Lee College - Baytown Campus
Spring Grade Distribution History
Table 5

Subject Area	Spring 2007 Average GPA	Spring 2006 Average GPA	1 Yr. Change	Spring 2005 Average GPA	2 Yr. Change
ACCT	2.4	2.5	-0.1	2.4	
ACNT	2.9	3.1	-0.2	3.1	-0.2
AIRP	3.7	2.8	0.9	3.3	0.4
ANTH	4.0		4.0	2.9	1.1
ARCE	2.0		2.0		2.0
ARCH	3.0	3.2	-0.2	3.2	-0.2
ARTC	3.9	3.4	0.5	2.8	1.1
ARTS	3.2	3.0	0.2	2.8	0.4
BCIS	2.1	2.7	-0.6	2.5	-0.4
BIBL	3.0		3.0	2.5	0.5
BIOL	2.8	2.6	0.2	2.6	0.2
BMGT	3.4	2.9	0.5	2.7	0.7
BUSG	2.8	2.1	0.7	1.8	1.0
BUSI	2.1	2.8	-0.7	2.9	-0.8
CHEM	2.7	2.7	0.0	3.1	-0.4
COMM	3.5	3.0	0.5	2.8	0.7
COSC	2.8	2.7	0.1	2.8	
CPMT	3.2	3.3	-0.1	3.1	0.1
CRIJ	3.1	2.8	0.3	2.9	0.2
CSME	3.0	3.4	-0.4	2.8	0.2
DAAC	3.1	2.8	0.3	3.0	0.1
DFTG	3.3	3.7	-0.4	3.2	0.1
DRAM	3.3	3.2	0.1	3.4	-0.1
ECON	2.4	2.7	-0.3	3.3	-0.9
EDUC	3.6	3.6		3.3	0.3
ELPT	2.9	2.9		3.3	-0.4
EMSP				2.5	-2.5
ENGL	2.3	2.4	-0.1	2.4	-0.1
ENVR	2.8	3.1	-0.3	3.0	-0.2
GEOG	2.6	2.9	-0.3	2.2	0.4
GEOI	2.9	2.6	0.3	2.2	0.7
GOVT	2.2	2.3	-0.1	2.4	-0.2
HIST	2.4	2.2	0.2	2.5	-0.1
HITT	3.2	3.3	-0.1	3.2	
HRPO	2.7	2.0	0.7	3.2	-0.5
HUMA	2.9	2.9		2.8	0.1
HYDR	3.9		3.9	3.8	0.1
IBUS				2.9	-2.9
IMED	3.7		3.7		3.7
INTC	3.0	3.2	-0.2	2.9	0.1
ITCC	3.0	3.5	-0.5	3.5	-0.5
ITSC	2.7	2.7		2.6	0.1
ITSE		2.8	-2.8	2.7	-2.7
ITSW		4.0	-4.0	3.9	-3.9
KINE	3.4	3.3	0.1	3.1	0.3
LGLA	3.5	3.4	0.1	3.4	0.1
MATH	2.4	2.3	0.1	2.6	-0.2
MCHN	3.1	3.2	-0.1	3.7	-0.6
MRKG	3.0	2.9	0.1	3.4	-0.4
MRMT	3.4	3.4		3.6	-0.2
MUAP	3.7	3.8	-0.1	3.4	0.3
MUEN	3.7	3.8	-0.1	3.8	-0.1
MUSI	2.3	2.8	-0.5	2.6	-0.3
NDTE	3.5	3.8	-0.3		3.5
OSHT	2.9		2.9		2.9
PFPB	3.3	3.4	-0.1	3.4	-0.1
PHIL	3.0	2.8	0.2	2.5	0.5
PHYS	3.2	2.9	0.3	2.9	0.3
POFI	2.7	2.7		3.0	-0.3
POFT	3.1	3.0	0.1	3.1	0.0
PSYC	2.4	2.2	0.2	2.2	0.2
PTAC	2.5	2.7	-0.2	2.8	-0.3
RNSG	2.7	2.6	0.1	2.4	0.3
SCIT	2.7	3.0	-0.3	3.0	-0.3
SGNL	3.0	3.1	-0.1	2.7	0.3
SOCI	2.7	2.5	0.2	2.5	0.2
SOCW	3.7	3.7		3.8	-0.1
SPAN	3.0	3.3	-0.3	3.3	-0.3
SPCH	2.4	2.8	-0.4	2.6	-0.2
SPNL	3.3	3.2	0.1	3.3	
TECA	3.8	3.6	0.2	3.6	0.2
TECM	2.9	3.1	-0.2	3.0	-0.1
VNSG	2.9	2.7	0.2	2.5	0.4
WLDG	3.4	3.5	-0.1	3.2	0.2
Grand Total	2.8	2.8		2.8	

Three Year Comparison of Completion Percentages By Subject Area
Lee College - Baytown Campus
Spring Grade Distribution History
Table 6

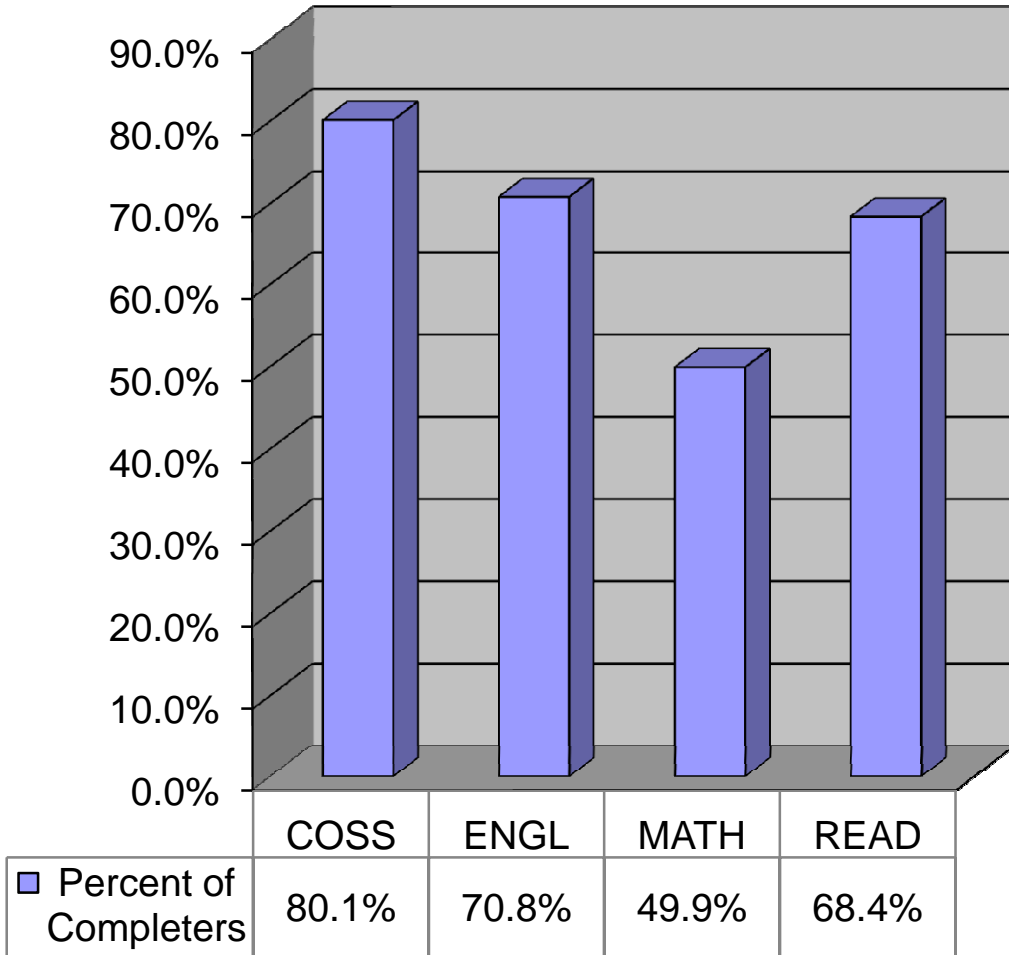
Subject Area	Spring 2007 Completers	Spring 2006 Completers	1 Yr. Change	Spring 2005 Completers	2 Yr. Change
ACCT	77.4%	66.7%	10.7%	75.2%	2.2%
ACNT	82.2%	79.8%	2.4%	90.3%	-8.1%
AIRP	84.6%	97.5%	-12.9%	86.7%	-2.1%
ANTH	100.0%		100.0%	91.7%	8.3%
ARCE	50.0%		50.0%		50.0%
ARCH	57.9%	72.7%	-14.8%	74.3%	-16.4%
ARTC	85.0%	88.0%	-3.0%	92.3%	-7.3%
ARTS	68.6%	78.2%	-9.6%	84.0%	-15.4%
BCIS	73.1%	58.1%	15.0%	88.6%	-15.5%
BIBL	66.7%		66.7%	66.7%	
BIOL	73.7%	73.1%	0.6%	69.4%	4.3%
BMGT	82.8%	85.2%	-2.4%	79.8%	3.0%
BUSG	45.8%	75.0%	-29.2%	68.2%	-22.4%
BUSI	80.9%	81.4%	-0.5%	86.7%	-5.8%
CHEM	65.9%	73.2%	-7.3%	73.8%	-7.9%
COMM	76.7%	65.0%	11.7%	57.1%	19.6%
COSC	60.7%	70.7%	-10.0%	80.6%	-19.9%
CPMT	79.1%	85.0%	-5.9%	73.2%	5.9%
CRIJ	76.5%	82.3%	-5.8%	82.2%	-5.7%
CSME	76.4%	67.6%	8.8%	83.9%	-7.5%
DAAC	65.8%	80.2%	-14.4%	64.0%	1.8%
DFTG	78.1%	73.6%	4.5%	73.4%	4.7%
DRAM	70.3%	74.8%	-4.5%	77.4%	-7.1%
ECON	74.9%	77.2%	-2.3%	86.0%	-11.1%
EDUC	63.8%	83.1%	-19.3%	74.5%	-10.7%
ELPT	72.2%	79.6%	-7.4%	76.3%	-4.1%
EMSP				56.9%	-56.9%
ENGL	67.3%	68.6%	-1.3%	76.0%	-8.7%
ENVR	76.5%	52.6%	23.9%	62.3%	14.2%
GEOG	86.5%	77.8%	8.7%	100.0%	-13.5%
GEOI	84.4%	81.1%	3.3%	65.3%	19.1%
GOVT	73.3%	73.4%	-0.1%	74.4%	-1.1%
HIST	65.1%	68.1%	-3.0%	72.3%	-7.2%
HITT	71.0%	73.2%	-2.2%	70.5%	0.5%
HRPO	77.3%	78.6%	-1.3%	64.9%	12.4%
HUMA	64.3%	68.2%	-3.9%	70.1%	-5.8%
HYDR	88.9%		88.9%	90.9%	-2.0%
IBUS			0.0%	90.9%	-90.9%
IMED	56.3%		56.3%		56.3%
INTC	75.9%	81.6%	-5.7%	84.9%	-9.0%
ITCC	78.0%	100.0%	-22.0%	88.4%	-10.4%
ITSC	65.6%	74.9%	-9.3%	79.6%	-14.0%
ITSE	100.0%	86.2%	13.8%	78.0%	22.0%
ITSW		100.0%	-100.0%	75.0%	-75.0%
KINE	76.7%	80.2%	-3.5%	79.4%	-2.7%
LGLA	77.9%	81.4%	-3.5%	73.8%	4.1%
MATH	63.1%	61.6%	1.5%	57.1%	6.0%
MCHN	74.3%	67.2%	7.1%	75.9%	-1.6%
MRKG	55.6%	66.7%	-11.1%	92.9%	-37.3%
MRMT	79.4%	82.9%	-3.5%	87.2%	-7.8%
MUAP	77.1%	84.2%	-7.1%	76.5%	0.6%
MUEN	82.4%	91.2%	-8.8%	84.1%	-1.7%
MUSI	83.7%	76.5%	7.2%	83.9%	-0.2%
NDTE	85.2%	82.1%	3.1%		85.2%
OSHT	63.8%		63.8%		63.8%
PFPB	73.6%	66.1%	7.5%	87.0%	-13.4%
PHIL	75.0%	75.0%		77.4%	-2.4%
PHYS	78.1%	87.9%	-9.8%	84.9%	-6.8%
POFI	83.4%	74.7%	8.7%	78.0%	5.4%
POFT	78.3%	76.2%	2.1%	75.9%	2.4%
PSYC	77.4%	81.3%	-3.9%	71.6%	5.8%
PTAC	85.6%	84.3%	1.3%	81.5%	4.1%
RNSG	88.5%	88.0%	0.5%	89.5%	-1.0%
SCIT	83.0%	76.7%	6.3%	84.8%	-1.8%
SGNL	83.6%	75.0%	8.6%	69.4%	14.2%
SOCI	76.0%	71.9%	4.1%	83.4%	-7.4%
SOCW	42.9%	63.6%	-20.7%	62.5%	-19.6%
SPAN	67.1%	67.4%	-0.3%	65.0%	2.1%
SPCH	74.5%	72.6%	1.9%	74.4%	0.1%
SPNL	72.9%	73.3%	-0.4%	71.6%	1.3%
TECA	80.8%	85.2%	-4.4%	92.7%	-11.9%
TECM	72.1%	81.0%	-8.9%	75.2%	-3.1%
VNSG	97.1%	88.8%	8.3%	96.0%	1.1%
WLDG	72.8%	71.5%	1.3%	79.3%	-6.5%
Grand Total	75.3%	75.9%	-0.6%	77.1%	-1.8%

Developmental Education Completion Percentage By Subject Area

Lee College - Baytown Campus
Spring 2007 Grade Distribution Summary
Table 7/Chart 2

Subject Area	Percent of Completers	Total Headcount	Number of Sections
COSS	80.1%	146	10
ENGL	70.8%	106	11
MATH	49.9%	675	58
READ	68.4%	231	17
Grand Total	59.7%	1,185	100

Percent of Completers



Area Grade Summary By Subject Area
Lee College - Huntsville Campus
Spring 2007 Grade Distribution Summary
Table 8

Subject Area	Average GPA	Percent Of Completers	Total Headcount	Number of Sections
ABDR	4.0	100.0%	33	3
ACCT	3.9	90.0%	40	2
ARTC	3.2	100.0%	15	1
ARTS	2.5	98.2%	55	2
AUMT	2.8	97.2%	72	4
BIOL	3.7	91.8%	61	3
BMGT	3.4	93.1%	29	1
BUSI	3.5	91.5%	59	2
CETT	3.1	100.0%	35	3
CHEF	4.0	100.0%	38	2
COSC	3.2	93.0%	71	4
CPMT	3.8	100.0%	26	2
CVOP	3.6	98.2%	168	14
ECON	4.0	98.9%	93	5
ENGL	3.4	94.0%	167	10
GOVT	3.1	100.0%	27	2
HALT	3.6	100.0%	114	8
HART	3.3	97.3%	74	4
HIST	3.9	94.8%	97	5
ITNW	3.4	85.7%	21	1
ITSC	3.2	98.7%	79	4
ITSW	3.3	94.1%	51	3
MATH	2.0	85.4%	82	5
POFI	3.0	95.3%	43	2
PSYC	3.6	88.9%	54	4
SOCI	3.8	85.2%	27	1
SPCH	3.7	90.2%	132	7
WDWK	3.3	100.0%	36	2
WLDG	3.4	94.1%	102	5
Grand Total	3.4	95.0%	1,901	111

Area Grade Summary By Average GPA
Lee College - Huntsville Campus
Spring 2007 Grade Distribution Summary
Table 9

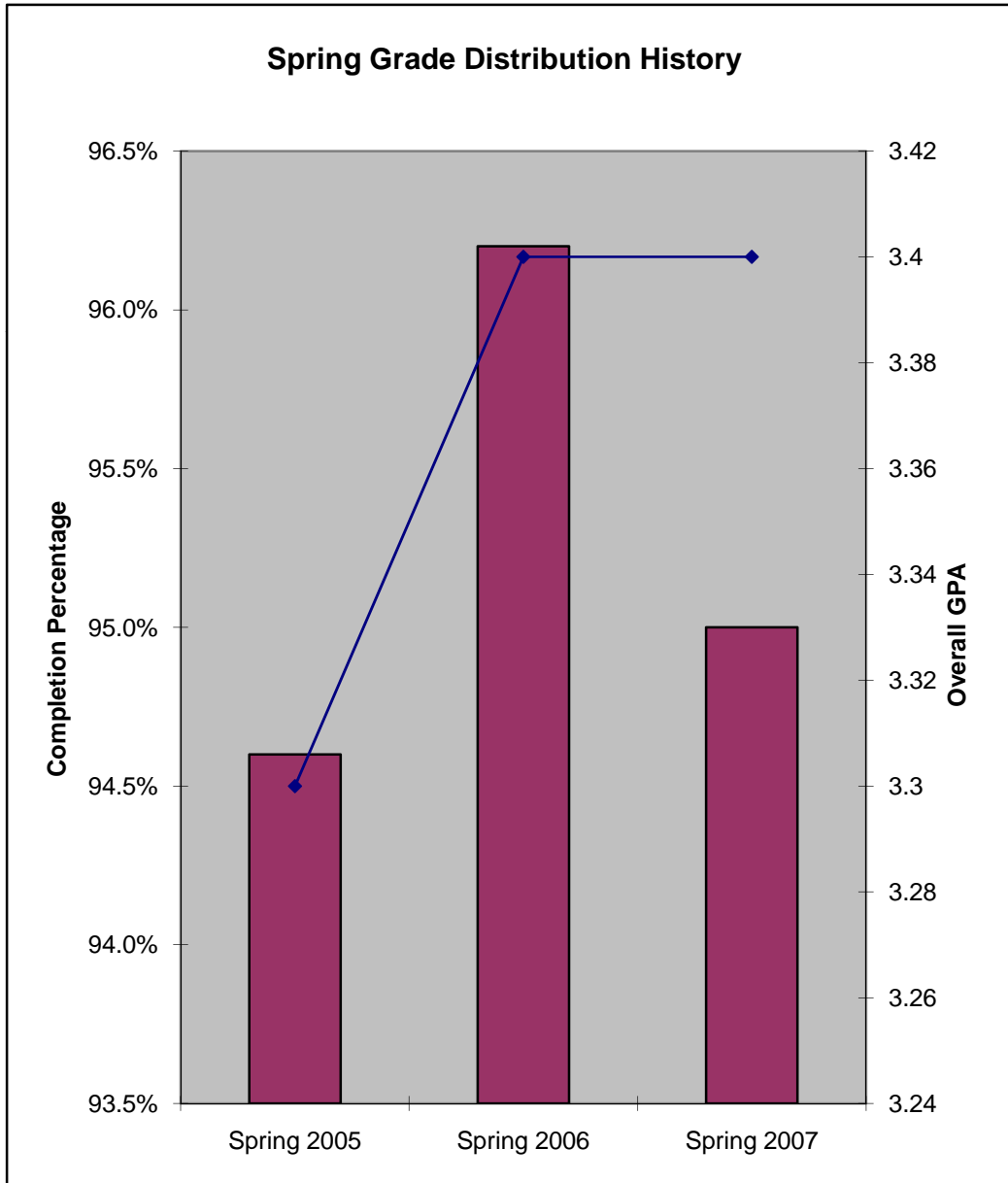
Subject Area	Average GPA	Percent Of Completers	Total Headcount	Number of Sections
ABDR	4.0	100.0%	33	3
CHEF	4.0	100.0%	38	2
ECON	4.0	98.9%	93	5
ACCT	3.9	90.0%	40	2
HIST	3.9	94.8%	97	5
CPMT	3.8	100.0%	26	2
SOCI	3.8	85.2%	27	1
BIOL	3.7	91.8%	61	3
SPCH	3.7	90.2%	132	7
CVOP	3.6	98.2%	168	14
HALT	3.6	100.0%	114	8
PSYC	3.6	88.9%	54	4
BUSI	3.5	91.5%	59	2
BMGT	3.4	93.1%	29	1
ENGL	3.4	94.0%	167	10
ITNW	3.4	85.7%	21	1
WLDG	3.4	94.1%	102	5
HART	3.3	97.3%	74	4
ITSW	3.3	94.1%	51	3
WDWK	3.3	100.0%	36	2
ARTC	3.2	100.0%	15	1
COSC	3.2	93.0%	71	4
ITSC	3.2	98.7%	79	4
CETT	3.1	100.0%	35	3
GOVT	3.1	100.0%	27	2
POFI	3.0	95.3%	43	2
AUMT	2.8	97.2%	72	4
ARTS	2.5	98.2%	55	2
MATH	2.0	85.4%	82	5
Grand Total	3.4	95.0%	1,901	111

Area Grade Summary By Completion Percentage
Lee College - Huntsville Campus
Spring 2007 Grade Distribution Summary
Table 10

Subject Area	Average GPA	Percent Of Completers	Total Headcount	Number of Sections
ABDR	4.0	100.0%	33	3
ARTC	3.2	100.0%	15	1
CETT	3.1	100.0%	35	3
CHEF	4.0	100.0%	38	2
CPMT	3.8	100.0%	26	2
GOVT	3.1	100.0%	27	2
HALT	3.6	100.0%	114	8
WDWK	3.3	100.0%	36	2
ECON	4.0	98.9%	93	5
ITSC	3.2	98.7%	79	4
ARTS	2.5	98.2%	55	2
CVOP	3.6	98.2%	168	14
HART	3.3	97.3%	74	4
AUMT	2.8	97.2%	72	4
POFI	3.0	95.3%	43	2
HIST	3.9	94.8%	97	5
ITSW	3.3	94.1%	51	3
WLDG	3.4	94.1%	102	5
ENGL	3.4	94.0%	167	10
BMGT	3.4	93.1%	29	1
COSC	3.2	93.0%	71	4
BIOL	3.7	91.8%	61	3
BUSI	3.5	91.5%	59	2
SPCH	3.7	90.2%	132	7
ACCT	3.9	90.0%	40	2
PSYC	3.6	88.9%	54	4
ITNW	3.4	85.7%	21	1
MATH	2.0	85.4%	82	5
SOCI	3.8	85.2%	27	1
Grand Total	3.4	95.0%	1,901	111

Three Year Comparison By Completion Percentage & GPA
Lee College - Huntsville Campus
Spring Grade Distribution History
Table 11/Chart 3

	Completion Percentage	GPA
Spring 2005	94.6%	3.3
Spring 2006	96.2%	3.4
Spring 2007	95.0%	3.4



Three Year Comparison of GPA By Subject Area
Lee College - Huntsville Campus
Spring Grade Distribution History
Table 12

Subject Area	Spring 2007 Average GPA	Spring 2006 Average GPA	1 Yr. Change	Spring 2005 Average GPA	2 Yr. Change
ABDR	4.0	3.4	0.6	3.8	0.2
ACCT	3.9		3.9	3.6	0.3
ARTC	3.2	3.9	-0.7		3.2
ARTS	2.5	2.9	-0.4	2.8	-0.3
AUMT	2.8	3.3	-0.5	3.1	-0.3
BIOL	3.7	3.6	0.1	3.4	0.3
BMGT	3.4		3.4	3.3	0.1
BUSI	3.5	3.5	0.0	3.2	0.3
CETT	3.1	2.8	0.3	3.4	-0.3
CHEF	4.0		4.0		4.0
COSC	3.2	3.2		3.1	0.1
CPMT	3.8	4.0	-0.2	3.8	
CVOP	3.6	3.6		3.4	0.2
DEMR		3.6	-3.6	3.7	-3.7
ECON	4.0	3.8	0.2	3.0	1.0
ENGL	3.4	3.2	0.2	3.3	0.1
ENVR		3.6	-3.6		
GEOL		0.0		3.5	-3.5
GOVT	3.1	3.1		2.9	0.2
HALT	3.6	3.6		3.6	
HART	3.3	3.0	0.3	3.2	0.1
HIST	3.9		3.9	2.6	1.3
HUMA				3.9	-3.9
ITNW	3.4	3.0	0.4	3.4	
ITSC	3.2	3.1	0.1	3.5	-0.3
ITSE		3.3	-3.3	3.4	-3.4
ITSW	3.3	3.7	-0.4	3.5	-0.2
MATH	2.0	2.6	-0.6	2.3	-0.3
POFI	3.0	3.2	-0.2	3.2	-0.2
POFT				3.7	-3.7
PSYC	3.6	3.5	0.1	3.5	0.1
SOCI	3.8	3.3	0.5	3.8	
SPCH	3.7		3.7	3.9	-0.2
WDWK	3.3	3.4	-0.1		3.3
WLDG	3.4	2.9	0.5	3.1	0.3
Grand Total	3.4	3.4		3.3	0.1

Three Year Comparison of Completion Percentages By Subject Area
Lee College - Huntsville Campus
Spring Grade Distribution History
Table 13

Subject Area	Spring 2007 Completers	Spring 2006 Completers	1 Yr. Change	Spring 2005 Completers	2 Yr. Change
ABDR	100.0%	85.7%	14.3%	93.8%	6.2%
ACCT	90.0%		90.0%	92.8%	-2.8%
ARTC	100.0%	100.0%			100.0%
ARTS	98.2%	95.5%	2.7%	94.2%	4.0%
AUMT	97.2%	100.0%	-2.8%	96.4%	0.8%
BIOL	91.8%	97.2%	-5.4%	96.8%	-5.0%
BMGT	93.1%		93.1%	92.9%	0.2%
BUSI	91.5%	100.0%	-8.5%	91.5%	
CETT	100.0%	98.0%	2.0%	98.2%	1.8%
CHEF	100.0%		100.0%		100.0%
COSC	93.0%	91.3%	1.7%	90.6%	2.4%
CPMT	100.0%	92.9%	7.1%	100.0%	
CVOP	98.2%	99.1%	-0.9%	97.9%	0.3%
DEMR		93.8%	-93.8%	94.3%	-94.3%
ECON	98.9%	98.5%	0.4%	96.4%	2.5%
ENGL	94.0%	95.8%	-1.8%	96.3%	-2.3%
ENVR		96.7%	-96.7%		
GEOL				97.5%	-97.5%
GOVT	100.0%	100.0%		95.7%	4.3%
HALT	100.0%	98.6%	1.4%	95.2%	4.8%
HART	97.3%	100.0%	-2.7%	95.9%	1.4%
HIST	94.8%		94.8%	90.6%	4.2%
HUMA				90.0%	-90.0%
ITNW	85.7%	96.8%	-11.1%	95.2%	-9.5%
ITSC	98.7%	94.4%	4.3%	95.0%	3.7%
ITSE		91.8%	-91.8%	93.8%	-93.8%
ITSW	94.1%	95.7%	-1.6%	94.6%	-0.5%
MATH	85.4%	89.7%	-4.3%	91.9%	-6.5%
POFI	95.3%	91.4%	3.9%	95.3%	
POFT				90.0%	-90.0%
PSYC	88.9%	89.3%	-0.4%	94.6%	-5.7%
SOCI	85.2%	83.6%	1.6%	91.7%	-6.5%
SPCH	90.2%		90.2%	93.3%	-3.1%
WDWK	100.0%	100.0%			100.0%
WLDG	94.1%	98.8%	-4.7%	87.9%	6.2%
Grand Total	95.0%	96.2%	-1.2%	94.6%	0.4%

Developmental Education Completion Percentage By Subject Area

Lee College - Huntsville Campus
Spring 2007 Grade Distribution Summary
Table 14/Chart 4

Subject Area	Percent of Completers	Total Headcount	Number of Sections
ENGL	92.0%	25	10
MATH	88.8%	98	16
READ	96.2%	26	9
Grand Total	90.6%	149	35

Percent of Completers

