

Lee



College

Office of Institutional Research

Grade Distribution Report
Spring 2004

Prepared:
August, 2004

Spring 2004 Grade Distribution Report

The Spring 2004 Grade Distribution Report contains GPA and Completion Percentage data reported by Subject Area. The Spring 2004 data are compared with Spring 2003 and Spring 2002.

The data in this report are summarized from detailed class grade reports produced by the Office of Institutional research. These detailed reports are provided to the President, Deans, and Division Chairs. Faculty members may request detailed information from Division Chairs or from the Office of Institutional Research.

Highlights of the Report

- ⇒ Overall GPA for the Baytown Campus (all students excluding HC/LC) was 2.8, down from 2.9 in Spring 2003 and Spring 2002.
- ⇒ Overall percentage of students completing non-developmental classes for the Baytown Campus was 75.3% for Spring 2004, down 0.6 percentage points from Spring 2003 (75.9%), and down by 2.5 percentage points from Spring 2002 (77.8%).
- ⇒ Overall percentage of students completing developmental classes for the Baytown campus was 62.9%.
- ⇒ Overall GPA for HC/LC was 3.4, unchanged from Spring 2003 and Spring 2002.
- ⇒ Overall percentage of students completing non-developmental classes for the HC/LC campus was 95.8%, up 1.1 percentage points from Spring 2003 and unchanged from Spring 2002.
- ⇒ Overall percentage of students completing developmental classes for the Huntsville campus was 96.2%.

Table Guide

Table	Contents	Site
Table 1	Area Grade Summary By Subject Area	Baytown
Table 2	Area Grade Summary By GPA	Baytown
Table 3	Area Grade Summary By Completion Percentage	Baytown
Table 4	3 Year History Chart - GPA and Completion Percentage	Baytown
Table 5	3 Year Comparison of GPA By Area	Baytown
Table 6	3 Year Comparison of Completion Percentage By Area	Baytown
Table 7	Developmental Education Completion Percentage By Area	Baytown
Table 8	Area Grade Summary By Subject Area	Huntsville
Table 9	Area Grade Summary By GPA	Huntsville
Table 10	Area Grade Summary By Completion Percentage	Huntsville
Table 11	3 Year History Chart - GPA and Completion Percentage	Huntsville
Table 12	3 Year Comparison of GPA By Area	Huntsville
Table 13	3 Year Comparison of Completion Percentage By Area	Huntsville
Table 14	Developmental Education Completion Percentage By Area	Huntsville

Table 1
Lee College - Baytown Campus
Spring 2004 Grade Distribution Summary
Sorted by Area

AREA	AVERAGE GPA	PERCENT COMPLETERS	TOTAL HEADCOUNT	NUMBER SECTIONS
ACCT	2.4	76.0%	167	9
ACNT	2.6	74.3%	144	11
AIRP	3.7	85.1%	101	9
ARCH	3.6	60.9%	46	5
ARTC	2.8	68.6%	35	3
ARTS	3.3	67.2%	247	32
BCIS	3.1	79.5%	44	2
BIOL	2.5	64.6%	822	40
BMGT	2.8	85.3%	150	9
BUSI	2.6	76.4%	174	7
CHEM	2.9	82.1%	117	7
COMM	2.3	75.3%	89	15
COSC	2.7	84.6%	228	12
CPMT	3.3	76.2%	164	11
CRIJ	2.9	80.6%	155	9
CSME	2.7	78.4%	227	34
CTEC	3.5	89.4%	47	2
DAAC	3.4	67.1%	146	13
DFTG	2.7	67.3%	104	11
DRAM	3.5	81.8%	148	12
ECON	2.5	70.3%	111	5
EDUC	3.5	87.5%	88	4
ELPT	3.2	69.6%	263	16
EMSP	2.2	49.7%	149	10
ENGL	2.3	73.0%	1137	72
ENVR	2.8	63.9%	61	3
GEOG	2.6	71.4%	28	3
GEOI	2.1	66.2%	65	4
GOVT	2.3	77.0%	518	19
HART	3.0	100.0%	12	2
HIST	2.5	68.9%	662	28
HITT	3.1	68.5%	337	20
HRPO	2.9	82.8%	58	3
HUMA	2.7	70.1%	261	21
INTC	3.2	75.4%	256	17
ITCC	3.5	80.0%	75	6
ITNW	4.0	100.0%	1	1
ITSC	2.9	83.7%	338	19
ITSE	3.1	61.8%	55	7
ITSW	3.6	80.0%	10	2
KINE	3.2	72.3%	801	66
LGLA	3.2	79.9%	199	10
MATH	2.4	60.1%	356	28
MCHN	3.5	60.0%	55	8
MRKG	2.4	73.2%	41	2
MRMT	3.3	91.3%	23	3
MUAP	3.7	70.2%	141	75
MUEN	3.8	79.5%	83	16
MUSI	2.8	79.8%	238	17
NDTE	4.0	90.0%	10	1
PFPB	3.4	75.5%	94	8
PHED	3.8	60.0%	20	5
PHIL	2.1	67.1%	70	3
PHYS	3.2	81.1%	95	7
POFI	2.9	81.9%	171	12
POFT	3.0	85.5%	332	30
PSYC	2.2	76.2%	463	16
PTAC	3.3	83.2%	434	24
RNSG	2.5	92.6%	677	46
SCIT	3.0	84.9%	53	3
SOCI	2.0	75.7%	202	12
SPAN	3.3	62.5%	104	9
SPCH	2.9	73.9%	522	27
SPNL	3.6	84.6%	52	2
TECA	3.6	84.8%	224	14
TECM	3.1	80.7%	187	6
VNSG	2.9	73.4%	169	9
WLDG	3.4	82.7%	226	23
GRAND TOTAL	2.8	75.3%	13,882	997

Table 2
Lee College - Baytown Campus
Spring 2004 Grade Distribution Summary
Sorted by Average GPA

AREA	AVERAGE GPA	PERCENT COMPLETERS	TOTAL HEADCOUNT	NUMBER SECTIONS
ITNW	4.0	100.0%	1	1
NDTE	4.0	90.0%	10	1
MUEN	3.8	79.5%	83	16
PHED	3.8	60.0%	20	5
AIRP	3.7	85.1%	101	9
MUAP	3.7	70.2%	141	75
ARCH	3.6	60.9%	46	5
ITSW	3.6	80.0%	10	2
SPNL	3.6	84.6%	52	2
TECA	3.6	84.8%	224	14
CTEC	3.5	89.4%	47	2
DRAM	3.5	81.8%	148	12
EDUC	3.5	87.5%	88	4
ITCC	3.5	80.0%	75	6
MCHN	3.5	60.0%	55	8
DAAC	3.4	67.1%	146	13
PFPB	3.4	75.5%	94	8
WLDG	3.4	82.7%	226	23
ARTS	3.3	67.2%	247	32
CPMT	3.3	76.2%	164	11
MRMT	3.3	91.3%	23	3
PTAC	3.3	83.2%	434	24
SPAN	3.3	62.5%	104	9
ELPT	3.2	69.6%	263	16
INTC	3.2	75.4%	256	17
KINE	3.2	72.3%	801	66
LGLA	3.2	79.9%	199	10
PHYS	3.2	81.1%	95	7
BCIS	3.1	79.5%	44	2
HITT	3.1	68.5%	337	20
ITSE	3.1	61.8%	55	7
TECM	3.1	80.7%	187	6
HART	3.0	100.0%	12	2
POFT	3.0	85.5%	332	30
SCIT	3.0	84.9%	53	3
CHEM	2.9	82.1%	117	7
CRIJ	2.9	80.6%	155	9
HRPO	2.9	82.8%	58	3
ITSC	2.9	83.7%	338	19
POFI	2.9	81.9%	171	12
SPCH	2.9	73.9%	522	27
VNSG	2.9	73.4%	169	9
ARTC	2.8	68.6%	35	3
BMGT	2.8	85.3%	150	9
ENVR	2.8	63.9%	61	3
MUSI	2.8	79.8%	238	17
COSC	2.7	84.6%	228	12
CSME	2.7	78.4%	227	34
DFTG	2.7	67.3%	104	11
HUMA	2.7	70.1%	261	21
ACNT	2.6	74.3%	144	11
BUSI	2.6	76.4%	174	7
GEOG	2.6	71.4%	28	3
BIOL	2.5	64.6%	822	40
ECON	2.5	70.3%	111	5
HIST	2.5	68.9%	662	28
RNSG	2.5	92.6%	677	46
ACCT	2.4	76.0%	167	9
MATH	2.4	60.1%	356	28
MRKG	2.4	73.2%	41	2
COMM	2.3	75.3%	89	15
ENGL	2.3	73.0%	1137	72
GOVT	2.3	77.0%	518	19
EMSP	2.2	49.7%	149	10
PSYC	2.2	76.2%	463	16
GEOL	2.1	66.2%	65	4
PHIL	2.1	67.1%	70	3
SOCI	2.0	75.7%	202	12
GRAND TOTAL	2.8	75.3%	13,882	997

Table 3
Lee College - Baytown Campus
Spring 2004 Grade Distribution Summary
Sorted by Completion Percentage

AREA	AVERAGE GPA	PERCENT COMPLETERS	TOTAL HEADCOUNT	NUMBER SECTIONS
HART	3.0	100.0%	12	2
ITNW	4.0	100.0%	1	1
RNSG	2.5	92.6%	677	46
MRMT	3.3	91.3%	23	3
NDTE	4.0	90.0%	10	1
CTEC	3.5	89.4%	47	2
EDUC	3.5	87.5%	88	4
POFT	3.0	85.5%	332	30
BMGT	2.8	85.3%	150	9
AIRP	3.7	85.1%	101	9
SCIT	3.0	84.9%	53	3
TECA	3.6	84.8%	224	14
COSC	2.7	84.6%	228	12
SPNL	3.6	84.6%	52	2
ITSC	2.9	83.7%	338	19
PTAC	3.3	83.2%	434	24
HRPO	2.9	82.8%	58	3
WLDG	3.4	82.7%	226	23
CHEM	2.9	82.1%	117	7
POFI	2.9	81.9%	171	12
DRAM	3.5	81.8%	148	12
PHYS	3.2	81.1%	95	7
TECM	3.1	80.7%	187	6
CRIJ	2.9	80.6%	155	9
ITCC	3.5	80.0%	75	6
ITSW	3.6	80.0%	10	2
LGLA	3.2	79.9%	199	10
MUSI	2.8	79.8%	238	17
BCIS	3.1	79.5%	44	2
MUEN	3.8	79.5%	83	16
CSME	2.7	78.4%	227	34
GOVT	2.3	77.0%	518	19
BUSI	2.6	76.4%	174	7
CPMT	3.3	76.2%	164	11
PSYC	2.2	76.2%	463	16
ACCT	2.4	76.0%	167	9
SOCI	2.0	75.7%	202	12
PFPB	3.4	75.5%	94	8
INTC	3.2	75.4%	256	17
COMM	2.3	75.3%	89	15
ACNT	2.6	74.3%	144	11
SPCH	2.9	73.9%	522	27
VNSG	2.9	73.4%	169	9
MRKG	2.4	73.2%	41	2
ENGL	2.3	73.0%	1137	72
KINE	3.2	72.3%	801	66
GEOG	2.6	71.4%	28	3
ECON	2.5	70.3%	111	5
MUAP	3.7	70.2%	141	75
HUMA	2.7	70.1%	261	21
ELPT	3.2	69.6%	263	16
HIST	2.5	68.9%	662	28
ARTC	2.8	68.6%	35	3
HITT	3.1	68.5%	337	20
DFTG	2.7	67.3%	104	11
ARTS	3.3	67.2%	247	32
DAAC	3.4	67.1%	146	13
PHIL	2.1	67.1%	70	3
GEOL	2.1	66.2%	65	4
BIOL	2.5	64.6%	822	40
ENVR	2.8	63.9%	61	3
SPAN	3.3	62.5%	104	9
ITSE	3.1	61.8%	55	7
ARCH	3.6	60.9%	46	5
MATH	2.4	60.1%	356	28
MCHN	3.5	60.0%	55	8
PHED	3.8	60.0%	20	5
EMSP	2.2	49.7%	149	10
GRAND TOTAL	2.8	75.3%	13,882	997

Table 4
Lee College - Baytown Campus
Spring Grade Distribution History Comparison

	Completion Percentage	GPA
Spring 2002	77.8%	2.9
Spring 2003	75.9%	2.9
Spring 2004	75.3%	2.8

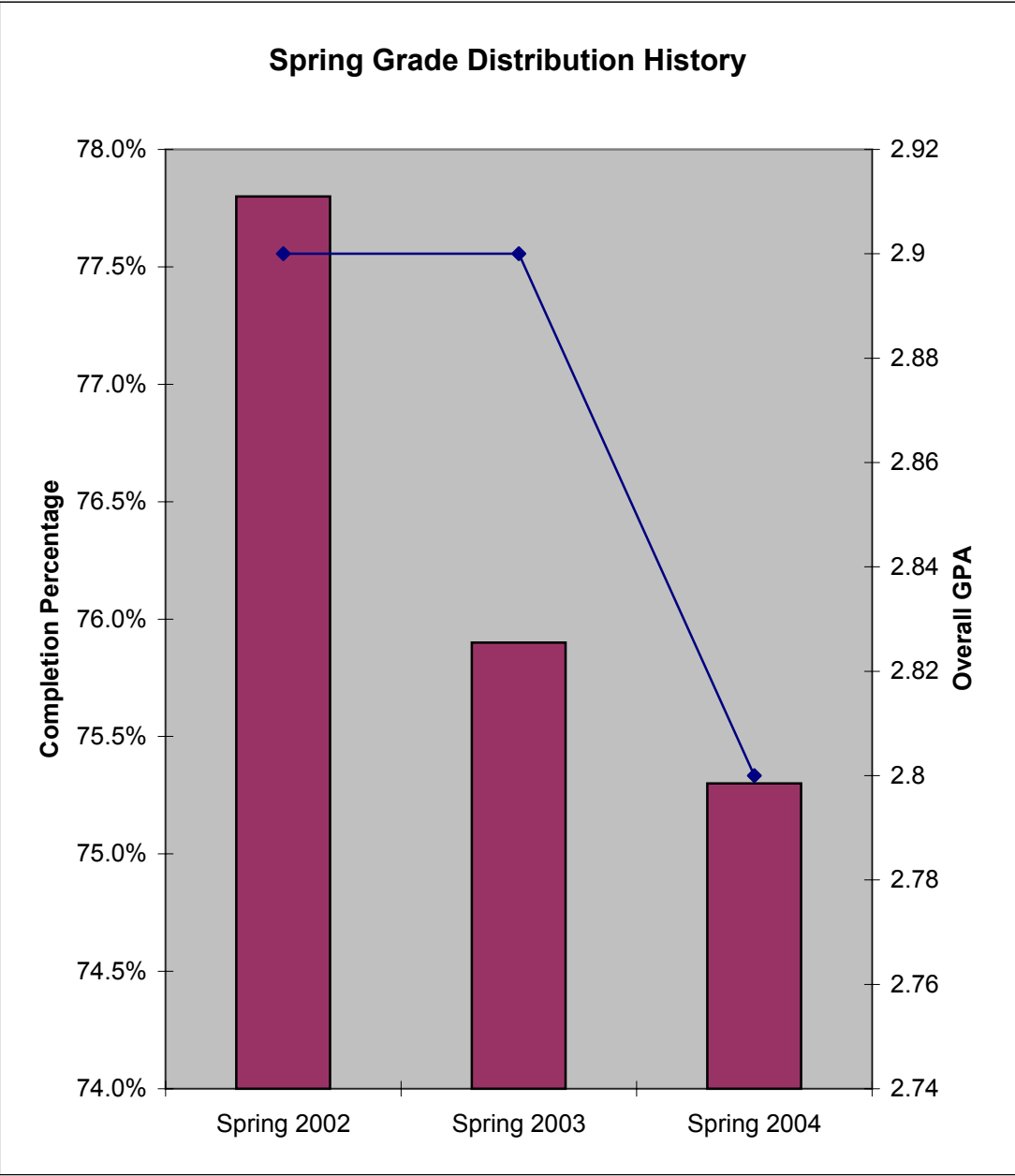


Table 5
Lee College - Baytown Campus
Spring 2004 Grade Distribution Summary
Spring GPA History

Area	Spring 2004 Average GPA	Spring 2003 Average GPA	1 Yr. Change	Spring 2002 Average GPA	2 Yr. Change
ACCT	2.4	2.3	0.1	2.8	-0.4
ACNT	2.6	3.0	-0.4	3.2	-0.6
AIRP	3.7	3.7	0.0	3.4	0.3
ANTH		2.3		2.0	
ARCH	3.6	2.7	0.9	2.8	0.8
ARTC	2.8				
ARTS	3.3	3.2	0.1	3.2	0.1
BCIS	3.1			4.0	-0.9
BIBL				3.1	
BIOL	2.5	2.6	-0.1	2.8	-0.3
BMTG	2.8	2.9	-0.1	3.2	-0.4
BUSG		3.2		2.6	
BUSI	2.6	3.0	-0.4	2.8	-0.2
CETT				3.1	
CHEM	2.9	3.0	-0.1	3.3	-0.4
CJSA		4.0			
CNBT		2.8			
COMM	2.3	3.3	-1.0	3.2	-0.9
COSC	2.7	3.1	-0.4	3.2	-0.5
CPMT	3.3	3.0	0.3	3.2	0.1
CRUJ	2.9	3.0	-0.1	3.2	-0.3
CSME	2.7	2.9	-0.2	2.5	0.2
CTEC	3.5				
DAAC	3.4	3.0	0.4	3.4	0.0
DFTG	2.7	2.8	-0.1	2.7	0.0
DRAM	3.5	3.6	-0.1	3.4	0.1
ECON	2.5	2.5	0.0	2.9	-0.4
EDUC	3.5	3.3	0.2	3.8	-0.3
ELPT	3.2	3.3	-0.1	3.3	-0.1
EMSP	2.2	2.9	-0.7	2.8	-0.6
ENGL	2.3	2.3	0.0	2.7	-0.4
ENVR	2.8	3.4	-0.6	3.1	-0.3
FREN				3.5	
GEOG	2.6	2.5	0.1	2.3	0.3
GEOI	2.1	2.1	0.0	2.4	-0.3
GOVT	2.3	2.5	-0.2	2.6	-0.3
GRPH		3.2		2.9	
HART	3.0	3.1	-0.1	2.5	0.5
HIST	2.5	2.4	0.1	2.5	0.0
HITT	3.1	3.1	0.0	2.8	0.3
HRPO	2.9	3.0	-0.1	3.2	-0.3
HUMA	2.7	2.6	0.1	2.8	-0.1
INMT				4.0	
INTC	3.2	3.1	0.1	3.3	-0.1
ITCC	3.5	3.5	0.0	3.1	0.4
ITNW	4.0				
ITSC	2.9	3.0	-0.1	3.1	-0.2
ITSE	3.1	2.9	0.2	2.8	0.3
ITSW	3.6	3.3	0.3	2.6	1.0
KINE	3.2	3.6	-0.4	3.5	-0.3
LGLA	3.2	3.3	-0.1	3.3	-0.1
MATH	2.4	2.3	0.1	2.2	0.2
MCHN	3.5	3.9	-0.4	3.6	-0.1
MRKG	2.4	3.8	-1.4	2.6	-0.2
MRMT	3.3	3.2	0.1	3.2	0.1
MUAP	3.7	3.5	0.2	3.7	0.0
MUEN	3.8	3.8	0.0		
MUSI	2.8	3.1	-0.3	3.0	-0.2
NDTE	4.0	4.0	0.0		
OSHT		3.2			
PFPB	3.4	3.1	0.3	3.4	0.0
PHED	3.8	3.3	0.5	2.9	0.9
PHIL	2.1	2.3	-0.2	3.3	-1.2
PHYS	3.2	3.1	0.1	3.2	0.0
POFI	2.9	3.1	-0.2	3.0	-0.1
POFT	3.0	3.1	-0.1	3.0	0.0
PSYC	2.2	2.4	-0.2	2.3	-0.1
PTAC	3.3	3.0	0.3	3.0	0.3
RNSG	2.5	2.4	0.1	2.2	0.3
SCIT	3.0	2.6	0.4		
SGNL		3.2		2.9	
SOCI	2.0	2.1	-0.1	2.1	-0.1
SPAN	3.3	3.3	0.0	3.3	0.0
SPCH	2.9	2.6	0.3	3.3	-0.4
SPNL	3.6	3.9	-0.3	3.7	-0.1
TECA	3.6	3.5	0.1		
TECM	3.1	3.1	0.0	3.3	-0.2
VNSG	2.9	2.8	0.1	3.1	-0.2
WLDG	3.4	3.3	0.1	3.2	0.2
GRAND TOTAL	2.8	2.9	-0.1	2.9	-0.1

Table 6
Lee College - Baytown Campus
Spring 2004 Grade Distribution Summary
Spring Completion History

Area	Spring 2004 Completers	Spring 2003 Completers	1 Yr. Change	Spring 2002 Completers	2 Yr. Change
ACCT	76.0%	72.0%	4.0%	78.3%	-2.3%
ACNT	74.3%	77.6%	-3.3%	83.3%	-9.0%
AIRP	85.1%	87.0%	-1.9%	75.7%	9.4%
ANTH		81.3%		91.7%	
ARCH	60.9%	76.0%	-15.1%	51.9%	9.0%
ARTC	68.6%				
ARTS	67.2%	72.8%	-5.6%	72.0%	-4.8%
BCIS	79.5%			62.5%	17.0%
BIBL				75.0%	
BIOL	64.6%	72.6%	-8.0%	74.1%	-9.5%
BMTG	85.3%	72.4%	12.9%	75.0%	10.3%
BUSG		95.5%		81.4%	
BUSI	76.4%	72.2%	4.2%	85.9%	-9.5%
CETT				80.5%	
CHEM	82.1%	74.7%	7.4%	65.4%	16.7%
CJSA		60.0%			
CNBT		87.0%			
COMM	75.3%	78.3%	-3.0%	92.0%	-16.7%
COSC	84.6%	78.3%	6.3%	83.2%	1.4%
CPMT	76.2%	89.0%	-12.8%	91.2%	-15.0%
CRUJ	80.6%	71.3%	9.3%	88.3%	-7.7%
CSME	78.4%	67.3%	11.1%	73.3%	5.1%
CTEC	89.4%				
DAAC	67.1%	71.3%	-4.2%	75.6%	-8.5%
DFTG	67.3%	72.4%	-5.1%	78.0%	-10.7%
DRAM	81.8%	79.1%	2.7%	81.5%	0.3%
ECON	70.3%	66.4%	3.9%	86.8%	-16.5%
EDUC	87.5%	84.0%	3.5%	84.0%	3.5%
ELPT	69.6%	73.5%	-3.9%	81.0%	-11.4%
EMSP	49.7%	45.7%	4.0%	48.1%	1.6%
ENGL	73.0%	74.2%	-1.2%	74.0%	-1.0%
ENVR	63.9%	74.0%	-10.1%	77.1%	-13.2%
FREN				66.7%	
GEOG	71.4%	86.7%	-15.3%	85.5%	-14.1%
GEOL	66.2%	66.3%	-0.1%	64.7%	1.5%
GOVt	77.0%	77.4%	-0.4%	80.4%	-3.4%
GRPH		77.3%		81.1%	
HART	100.0%	75.0%	25.0%	86.4%	13.6%
HIST	68.9%	68.9%	0.0%	72.0%	-3.1%
HITT	68.5%	74.1%	-5.6%	73.7%	-5.2%
HRPO	82.8%	87.5%	-4.7%	80.0%	2.8%
HUMA	70.1%	81.6%	-11.5%	80.3%	-10.2%
INMT				100.0%	
INTC	75.4%	83.5%	-8.1%	75.4%	0.0%
ITCC	80.0%	80.0%	0.0%	97.3%	-17.3%
ITNW	100.0%				
ITSC	83.7%	77.2%	6.5%	81.0%	2.7%
ITSE	61.8%	55.1%	6.7%	67.6%	-5.8%
ITSW	80.0%	80.8%	-0.8%	71.9%	8.1%
KINE	72.3%	75.3%	-3.0%	78.1%	-5.8%
LGLA	79.9%	77.2%	2.7%	73.3%	6.6%
MATH	60.1%	57.7%	2.4%	62.8%	-2.7%
MCHN	60.0%	81.0%	-21.0%	75.5%	-15.5%
MRKG	73.2%	90.2%	-17.0%	80.6%	-7.4%
MRMT	91.3%	73.3%	18.0%	50.0%	41.3%
MUAP	70.2%	78.0%	-7.8%	76.5%	-6.3%
MUEN	79.5%	88.2%	-8.7%		
MUSI	79.8%	80.0%	-0.2%	84.2%	-4.4%
NDTE	90.0%	62.5%	27.5%		
OSHT		91.3%			
PFPP	75.5%	76.1%	-0.6%	79.3%	-3.8%
PHED	60.0%	87.3%	-27.3%	74.8%	-14.8%
PHIL	67.1%	72.1%	-5.0%	72.2%	-5.1%
PHYS	81.1%	85.9%	-4.8%	81.8%	-0.7%
POFI	81.9%	79.3%	2.6%	80.0%	1.9%
POFT	85.5%	79.4%	6.1%	86.5%	-1.0%
PSYC	76.2%	75.8%	0.4%	79.1%	-2.9%
PTAC	83.2%	76.9%	6.3%	77.8%	5.4%
RNSG	92.6%	74.5%	18.1%	82.1%	10.5%
SCIT	84.9%	74.7%	10.2%		
SGNL		83.3%		62.5%	
SOCI	75.7%	83.2%	-7.5%	83.1%	-7.4%
SPAN	62.5%	62.9%	-0.4%	62.5%	0.0%
SPCH	73.9%	76.3%	-2.4%	78.9%	-5.0%
SPNL	84.6%	89.3%	-4.7%	94.6%	-10.0%
TECA	84.8%	91.5%	-6.7%		
TECM	80.7%	77.6%	3.1%	79.4%	1.3%
VNSG	73.4%	96.4%	-23.0%	90.1%	-16.7%
WLDG	82.7%	80.9%	1.8%	78.3%	4.4%
GRAND TOTAL	75.3%	75.9%	-0.6%	77.8%	-2.5%

Table 7

**Lee College - Baytown Campus
Spring 2004 Grade Distribution Summary
Developmental Education Courses**

AREA	PERCENT COMPLETERS	TOTAL HEADCOUNT	NUMBER SECTIONS
COSS	76.7%	133	9
ENGL	80.3%	188	15
ESOL	80.0%	20	2
MATH	55.2%	877	71
READ	65.9%	229	12
TOTAL	62.9%	1,447	109

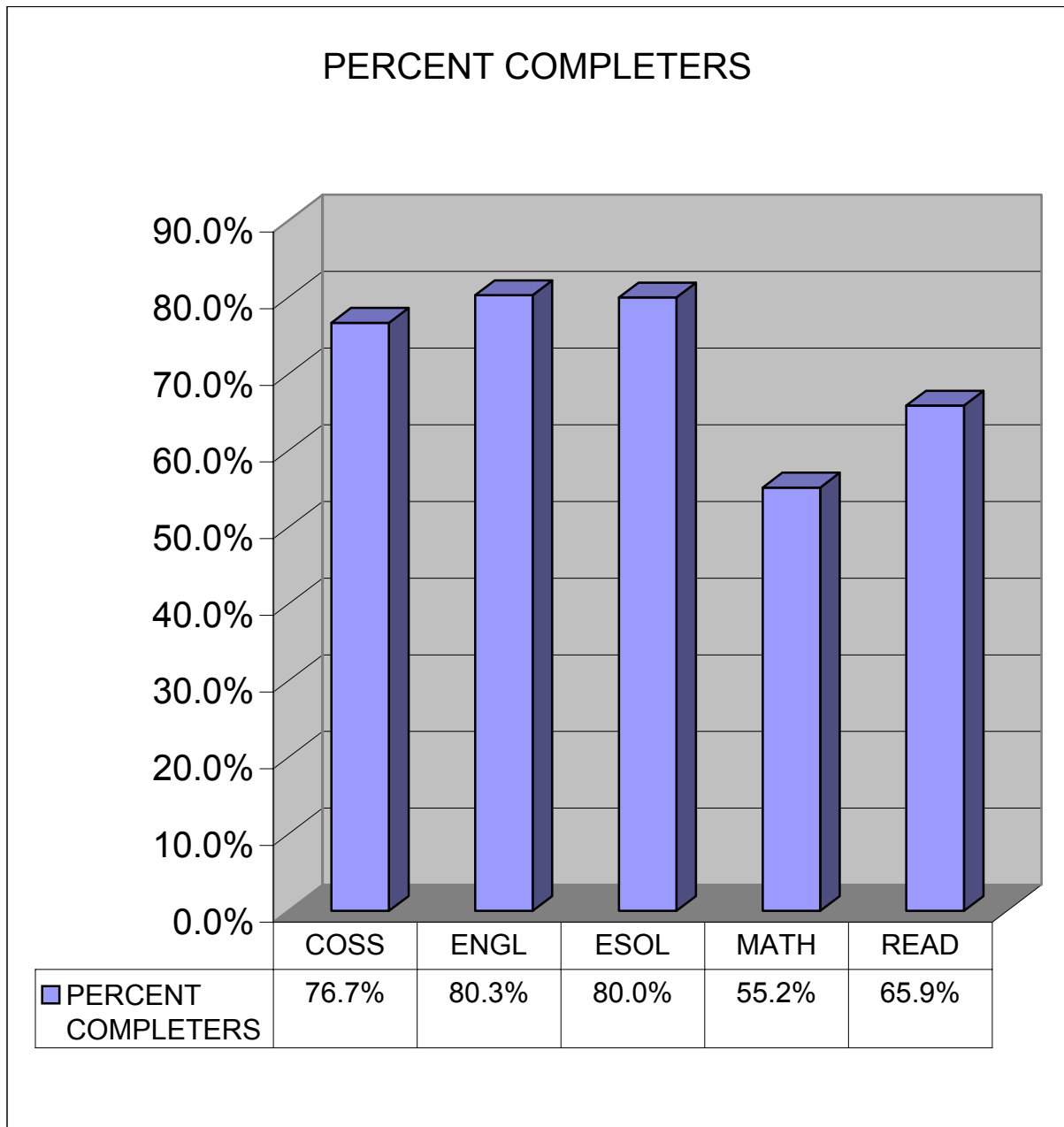


Table 8

Lee College - HC/LC

Spring 2004 Grade Distribution Summary

Sorted by Area

AREA	AVERAGE GPA	PERCENT COMPLETERS	TOTAL HEADCOUNT	NUMBER SECTIONS
ABDR	3.9	85.6%	90	5
ACCT	3.3	98.4%	62	3
ARTC	3.8	94.1%	17	1
ARTS	3.6	100.0%	52	3
AUMT	3.0	96.9%	64	4
BIOL	3.3	93.8%	32	2
BMGT	3.7	100.0%	13	1
BUSI	3.2	94.3%	157	8
CETT	3.4	97.6%	125	6
COSC	3.6	95.6%	90	5
CPMT	3.7	95.9%	74	4
CVOP	3.4	98.0%	256	16
DEMR	3.8	95.9%	122	6
DLBT	3.2	90.5%	105	15
ECON	3.3	100.0%	55	3
ENGL	3.3	96.0%	198	14
ENVR	3.7	94.7%	19	1
GEOL	3.7	96.2%	53	3
GOVT	3.6	97.9%	48	3
HALT	3.8	96.0%	150	8
HART	3.2	100.0%	88	4
HIST	3.0	89.1%	138	8
HUMA	3.5	90.5%	63	3
IMED	3.2	100.0%	15	1
ITNW	3.3	100.0%	21	1
ITSC	3.7	98.6%	74	4
ITSW	3.6	98.2%	55	3
MATH	2.4	91.6%	83	6
MUSI	3.5	100.0%	32	2
POFI	3.2	97.7%	43	2
POFT	3.6	100.0%	13	1
PSYC	3.8	96.5%	113	7
SOCI	3.6	95.5%	112	5
SPCH	4.0	100.0%	94	6
TECM	2.7	100.0%	18	1
WLDG	3.2	95.6%	90	6
GRAND TOTAL	3.4	95.8%	2,834	171

Table 9

Lee College - HC/LC

Spring 2004 Grade Distribution Summary

Sorted by Average GPA

AREA	AVERAGE GPA	PERCENT COMPLETERS	TOTAL HEADCOUNT	NUMBER SECTIONS
SPCH	4.0	100.0%	94	6
ABDR	3.9	85.6%	90	5
ARTC	3.8	94.1%	17	1
DEMR	3.8	95.9%	122	6
HALT	3.8	96.0%	150	8
PSYC	3.8	96.5%	113	7
BMGT	3.7	100.0%	13	1
CPMT	3.7	95.9%	74	4
ENVR	3.7	94.7%	19	1
GEOG	3.7	96.2%	53	3
ITSC	3.7	98.6%	74	4
ARTS	3.6	100.0%	52	3
COSC	3.6	95.6%	90	5
GOVT	3.6	97.9%	48	3
ITSW	3.6	98.2%	55	3
POFT	3.6	100.0%	13	1
SOCI	3.6	95.5%	112	5
HUMA	3.5	90.5%	63	3
MUSI	3.5	100.0%	32	2
CETT	3.4	97.6%	125	6
CVOP	3.4	98.0%	256	16
ACCT	3.3	98.4%	62	3
BIOL	3.3	93.8%	32	2
ECON	3.3	100.0%	55	3
ENGL	3.3	96.0%	198	14
ITNW	3.3	100.0%	21	1
BUSI	3.2	94.3%	157	8
DLBT	3.2	90.5%	105	15
HART	3.2	100.0%	88	4
IMED	3.2	100.0%	15	1
POFI	3.2	97.7%	43	2
WLDG	3.2	95.6%	90	6
AUMT	3.0	96.9%	64	4
HIST	3.0	89.1%	138	8
TECM	2.7	100.0%	18	1
MATH	2.4	91.6%	83	6
GRAND TOTAL	3.4	95.8%	2,834	171

Table 10

Lee College - HC/LC

Spring 2004 Grade Distribution Summary

Sorted by Completion Percentage

AREA	AVERAGE GPA	PERCENT COMPLETERS	TOTAL HEADCOUNT	NUMBER SECTIONS
ARTS	3.6	100.0%	52	3
BMGT	3.7	100.0%	13	1
ECON	3.3	100.0%	55	3
HART	3.2	100.0%	88	4
IMED	3.2	100.0%	15	1
ITNW	3.3	100.0%	21	1
MUSI	3.5	100.0%	32	2
POFT	3.6	100.0%	13	1
SPCH	4.0	100.0%	94	6
TECM	2.7	100.0%	18	1
ITSC	3.7	98.6%	74	4
ACCT	3.3	98.4%	62	3
ITSW	3.6	98.2%	55	3
CVOP	3.4	98.0%	256	16
GOVT	3.6	97.9%	48	3
POFI	3.2	97.7%	43	2
CETT	3.4	97.6%	125	6
AUMT	3.0	96.9%	64	4
PSYC	3.8	96.5%	113	7
GEOL	3.7	96.2%	53	3
ENGL	3.3	96.0%	198	14
HALT	3.8	96.0%	150	8
CPMT	3.7	95.9%	74	4
DEMR	3.8	95.9%	122	6
COSC	3.6	95.6%	90	5
WLDG	3.2	95.6%	90	6
SOCI	3.6	95.5%	112	5
ENVR	3.7	94.7%	19	1
BUSI	3.2	94.3%	157	8
ARTC	3.8	94.1%	17	1
BIOL	3.3	93.8%	32	2
MATH	2.4	91.6%	83	6
DLBT	3.2	90.5%	105	15
HUMA	3.5	90.5%	63	3
HIST	3.0	89.1%	138	8
ABDR	3.9	85.6%	90	5
GRAND TOTAL	3.4	95.8%	2,834	171

Table 11
Lee College - HC/LC
Spring Grade Distribution History Comparison

	Completion Percentage	GPA
Spring 2002	95.8%	3.4
Spring 2003	94.7%	3.4
Spring 2004	95.8%	3.4

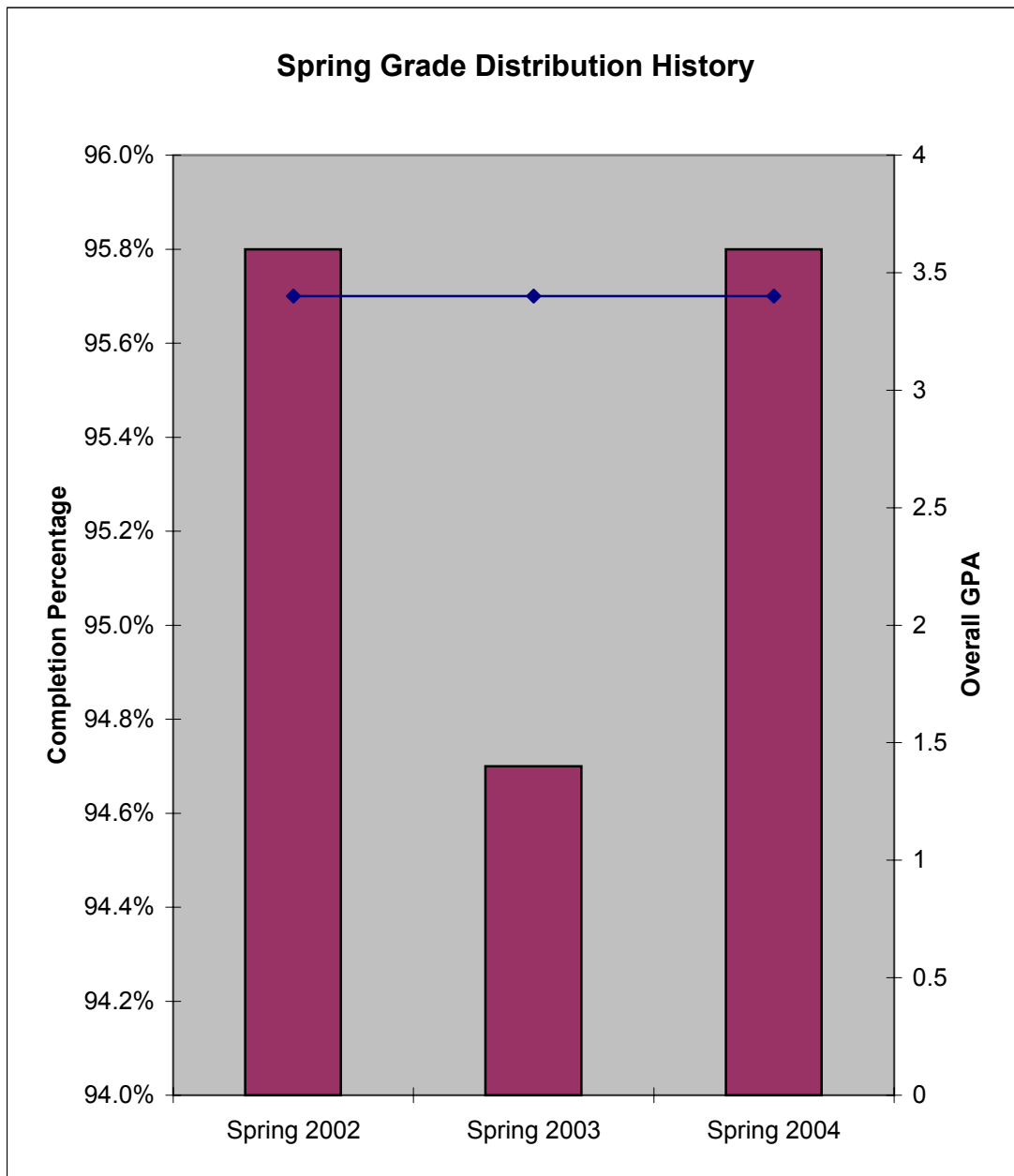


Table 12

Lee College - HC/LC

Spring 2004 Grade Distribution Summary

Spring GPA History

Area	Spring 2004 Average GPA	Spring 2003 Average GPA	1 Yr. Change	Spring 2002 Average GPA	2 Yr. Change
ABDR	3.9	3.9	0.0	3.6	0.3
ACCT	3.3	3.8	-0.5	3.3	0.0
ARTC	3.8	3.4	0.4		
ARTS	3.6				
AUMT	3.0	2.8	0.2	2.7	0.3
BIOL	3.3	3.6	-0.3	3.3	0.0
BMGT	3.7	3.3	0.4	3.1	0.6
BUSG		3.5		3.3	
BUSI	3.2	3.1	0.1	3.7	-0.5
CETT	3.4	3.5	-0.1	3.5	-0.1
COSC	3.6	3.3	0.3	3.3	0.3
CPMT	3.7	3.8	-0.1	3.9	-0.2
CVOP	3.4	3.4	0.0	3.4	0.0
DEMR	3.8	3.5	0.3	3.6	0.2
DLBT	3.2	3.5	-0.3	3.4	-0.2
ECON	3.3	3.0	0.3	3.1	0.2
ENGL	3.3	3.3	0.0	3.1	0.2
ENVR	3.7	3.7	0.0	3.8	-0.1
FREN		3.3			
GEOL	3.7	3.5	0.2	3.6	0.1
GOVT	3.6	3.6	0.0	3.3	0.3
GRPH				3.8	
HALT	3.8	3.8	0.0	3.7	0.1
HART	3.2	3.3	-0.1	3.4	-0.2
HIST	3.0	2.8	0.2	3.1	-0.1
HUMA	3.5	4.0	-0.5	3.8	-0.3
IMED	3.2			3.4	-0.2
INMT				3.0	
ITNW	3.3	3.0	0.3	3.0	0.3
ITSC	3.7	3.4	0.3	3.6	0.1
ITSE		3.5		3.4	
ITSW	3.6	3.6	0.0	3.6	0.0
MATH	2.4	2.5	-0.1	2.2	0.2
MCHN		2.6		3.1	
MUSI	3.5	3.7	-0.2	3.6	-0.1
POFI	3.2	2.7	0.5	3.5	-0.3
POFT	3.6	3.8	-0.2	3.7	-0.1
PSYC	3.8	3.8	0.0	3.2	0.6
SOCI	3.6	3.5	0.1	3.6	0.0
SPAN		3.4		3.8	
SPCH	4.0			2.7	1.3
TECM	2.7	2.8	-0.1	2.9	-0.2
WLDG	3.2	2.7	0.5	2.9	0.3
GRAND TOTAL	3.4	3.4	0.0	3.4	0

Table 13

Lee College - HC/LC

Spring 2004 Grade Distribution Summary

Spring Completion History

Area	Spring 2004 Completers	Spring 2003 Completers	1 Yr. Change	Spring 2002 Completers	2 Yr. Change
ABDR	85.6%	90.9%	-5.3%	100.0%	-14.4%
ACCT	98.4%	100.0%	-1.6%	95.2%	3.2%
ARTC	94.1%	100.0%	-5.9%		
ARTS	100.0%				
AUMT	96.9%	94.6%	2.3%	96.8%	0.1%
BIOL	93.8%	83.3%	10.5%	95.2%	-1.4%
BMGT	100.0%	100.0%	0.0%	81.3%	18.7%
BUSG		100.0%		95.5%	
BUSI	94.3%	95.2%	-0.9%	97.2%	-2.9%
CETT	97.6%	100.0%	-2.4%	95.1%	2.5%
COSC	95.6%	92.6%	3.0%	94.6%	1.0%
CPMT	95.9%	100.0%	-4.1%	100.0%	-4.1%
CVOP	98.0%	96.9%	1.1%	100.0%	-2.0%
DEMR	95.9%	98.9%	-3.0%	98.9%	-3.0%
DLBT	90.5%	86.8%	3.7%	97.4%	-6.9%
ECON	100.0%	97.2%	2.8%	94.9%	5.1%
ENGL	96.0%	94.7%	1.3%	95.0%	1.0%
ENVR	94.7%	94.1%	0.6%	95.0%	-0.3%
FREN		66.7%			
GEOL	96.2%	96.6%	-0.4%	97.0%	-0.8%
GOVT	97.9%	97.8%	0.1%	95.3%	2.6%
GRPH				95.7%	
HALT	96.0%	95.6%	0.4%	91.4%	4.6%
HART	100.0%	98.4%	1.6%	100.0%	0.0%
HIST	89.1%	75.8%	13.3%	89.3%	-0.2%
HUMA	90.5%	91.2%	-0.7%	97.8%	-7.3%
IMED	100.0%			94.4%	5.6%
INMT				88.9%	
ITNW	100.0%	100.0%	0.0%	100.0%	0.0%
ITSC	98.6%	100.0%	-1.4%	96.4%	2.2%
ITSE		100.0%		97.7%	
ITSW	98.2%	100.0%	-1.8%	97.8%	0.4%
MATH	91.6%	93.5%	-1.9%	92.3%	-0.7%
MCHN		86.5%		92.9%	
MUSI	100.0%	94.3%	5.7%	98.0%	2.0%
POFI	97.7%	100.0%	-2.3%	100.0%	-2.3%
POFT	100.0%	93.8%	6.2%	95.9%	4.1%
PSYC	96.5%	94.9%	1.6%	91.8%	4.7%
SOCI	95.5%	94.0%	1.5%	94.2%	1.3%
SPAN		94.9%		97.8%	
SPCH	100.0%			89.9%	10.1%
TECM	100.0%	86.8%	13.2%	96.2%	3.8%
WLDG	95.6%	98.0%	-2.4%	97.4%	-1.8%
GRAND TOTAL	95.8%	94.7%	1.1%	95.8%	0.0%

Table 14
Lee College - HC/LC
Spring 2004 Grade Distribution Summary
Developmental Education Courses

AREA	PERCENT COMPLETERS	TOTAL HEADCOUNT	NUMBER SECTIONS
ENGL	97.0%	33	9
MATH	96.6%	207	27
READ	91.7%	24	12
TOTAL	96.2%	264	48

