



# Grade Distribution Report

## Summer I 2006







Prepared:  
January, 2008

# Summer I 2006 Grade Distribution Report

The Summer I 2006 Grade Distribution Report contains GPA and Completion Percentage data reported by Subject Area. The Summer I 2006 data are compared with Summer I 2005 and Summer I 2004.

The data in this report are summarized from detailed class grade reports produced by the Office of Institutional research. These detailed reports are provided to the President, Deans, and Division Chairs. Faculty members may request detailed information from the Chair or from the Office of Institutional Research.

## Highlights of the Report

-  Overall GPA for the Baytown Campus (all students excluding Huntsville) was 3.0 for Summer I 2006, unchanged Summer I 2005 and Summer I 2004.
-  Overall percentage of students completing non-developmental classes for the Baytown Campus was 80.8% for Summer I 2006, down 0.8% from Summer I 2005 (81.6%), and down 1.7% from Summer I 2004 (82.5%).
-  Overall percentage of students completing developmental classes for the Baytown campus was 78.3%.
-  Overall GPA for the Huntsville Campus was 3.4 for Summer I 2006, unchanged from Summer I 2005 and Summer I 2004.
-  Overall percentage of students completing non-developmental classes for the Huntsville campus was 94.3%, up 0.2% from Summer I 2005 (94.1%), and down 0.7% from Summer I 2004 (95.0%).
-  Overall percentage of students completing developmental classes for the Huntsville campus was 93.3%.

## Table/Chart Guide

<b>Table/Chart</b>	<b>Contents</b>	<b>Campus</b>	<b>Page</b>
Table 1	Area Grade Summary By Subject Area	Baytown	2
Table 2	Area Grade Summary By Average GPA	Baytown	3
Table 3	Area Grade Summary By Completion Percentage	Baytown	4
Table 4/Chart 1	Three Year Comparison By Completion Percentage & GPA	Baytown	5
Table 5/Chart 2	Developmental Education Completion Percentage By Subject Area	Baytown	6
Table 6	Area Grade Summary By Subject Area	Huntsville	7
Table 7	Area Grade Summary By Average GPA	Huntsville	8
Table 8	Area Grade Summary By Completion Percentage	Huntsville	9
Table 9/Chart 3	Three Year Comparison By Completion Percentage & GPA	Huntsville	10
Table 10/Chart 4	Developmental Education Completion Percentage By Area	Huntsville	11

**Area Grade Summary By Subject Area**  
**Lee College - Baytown Campus**  
**Summer I 2006 Grade Distribution Summary**  
**Table 1**

<b>Subject Area</b>	<b>Average GPA</b>	<b>Percent of Completers</b>	<b>Total Headcount</b>	<b>Number of Sections</b>
ACCT	2.2	93.3%	15	3
ACNT	4.0	100.0%	1	1
AIRP	3.4	86.2%	29	7
ARCH	3.6	76.2%	21	5
ARTS	3.1	88.7%	62	14
BCIS	3.0	73.2%	41	2
BIOL	2.7	79.3%	261	17
BMGT	2.8	68.4%	19	3
BUSI	2.9	86.8%	68	5
CHEM	2.9	81.3%	16	1
COMM	4.0	100.0%	1	1
COSC	3.2	69.4%	36	3
CPMT	3.5	76.2%	21	3
CRIJ	3.6	100.0%	10	2
CSME	3.0	90.2%	122	22
DAAC	3.5	81.5%	27	4
DFTG	3.9	78.7%	61	10
DRAM	4.0	100.0%	5	2
ECON	2.8	74.2%	66	4
ELPT	3.0	78.6%	98	7
ENGL	2.6	80.4%	224	21
GEOG	3.0	100.0%	9	1
GEOI	3.3	92.3%	13	1
GOVT	2.8	80.0%	200	7
HIST	3.2	69.3%	137	10
HITT	3.3	88.1%	67	6
HRPO	2.5	87.5%	16	1
HUMA	2.5	75.6%	41	3
IBUS	3.1	90.9%	11	1
INTC	3.2	81.8%	55	5
ITCC	3.7	88.0%	25	4
ITSC	2.6	88.2%	76	4
ITSE	4.0	100.0%	2	1
ITSW	3.3	85.7%	7	1
KINE	3.3	78.0%	123	14
LGLA	3.5	100.0%	19	3
MATH	2.8	70.3%	74	10
MCHN	3.6	68.8%	16	1
MUAP	4.0	95.2%	21	11
MUEN	4.0	100.0%	2	1
MUSI	3.3	88.2%	51	6
PFPB	3.7	65.4%	52	4
PHIL	2.8	80.0%	25	3
PHYS	3.2	95.2%	21	2
POFI	2.6	86.4%	22	2
POFT	2.7	82.4%	68	10
PSYC	2.6	78.6%	98	8
PTAC	3.5	73.3%	191	13
RNSG	2.3	77.0%	322	16
SCIT	3.2	88.0%	25	2
SOCI	2.8	89.7%	29	2
SPAN	3.7	85.7%	14	1
SPCH	3.3	90.7%	75	5
TECA	3.9	100.0%	7	1
TECM	3.3	83.8%	37	3
VNSG	3.9	90.7%	215	17
WLDG	3.4	76.5%	119	15
<b>Grand Total</b>	<b>3.0</b>	<b>80.8%</b>	<b>3,489</b>	<b>332</b>

**Area Grade Summary By Average GPA**  
**Lee College - Baytown Campus**  
**Summer I 2006 Grade Distribution Summary**  
**Table 2**

Subject Area	Average GPA	Percent of Completers	Total Headcount	Number of Sections
ACNT	4.0	100.0%	1	1
COMM	4.0	100.0%	1	1
DRAM	4.0	100.0%	5	2
ITSE	4.0	100.0%	2	1
MUAP	4.0	95.2%	21	11
MUEN	4.0	100.0%	2	1
DFTG	3.9	78.7%	61	10
TECA	3.9	100.0%	7	1
VNSG	3.9	90.7%	215	17
ITCC	3.7	88.0%	25	4
PFPB	3.7	65.4%	52	4
SPAN	3.7	85.7%	14	1
ARCH	3.6	76.2%	21	5
CRIJ	3.6	100.0%	10	2
MCHN	3.6	68.8%	16	1
CPMT	3.5	76.2%	21	3
DAAC	3.5	81.5%	27	4
LGLA	3.5	100.0%	19	3
PTAC	3.5	73.3%	191	13
AIRP	3.4	86.2%	29	7
WLDG	3.4	76.5%	119	15
GEOL	3.3	92.3%	13	1
HITT	3.3	88.1%	67	6
ITSW	3.3	85.7%	7	1
KINE	3.3	78.0%	123	14
MUSI	3.3	88.2%	51	6
SPCH	3.3	90.7%	75	5
TECM	3.3	83.8%	37	3
COSC	3.2	69.4%	36	3
HIST	3.2	69.3%	137	10
INTC	3.2	81.8%	55	5
PHYS	3.2	95.2%	21	2
SCIT	3.2	88.0%	25	2
ARTS	3.1	88.7%	62	14
IBUS	3.1	90.9%	11	1
BCIS	3.0	73.2%	41	2
CSME	3.0	90.2%	122	22
ELPT	3.0	78.6%	98	7
GEOG	3.0	100.0%	9	1
BUSI	2.9	86.8%	68	5
CHEM	2.9	81.3%	16	1
BMGT	2.8	68.4%	19	3
ECON	2.8	74.2%	66	4
GOVT	2.8	80.0%	200	7
MATH	2.8	70.3%	74	10
PHIL	2.8	80.0%	25	3
SOCI	2.8	89.7%	29	2
BIOL	2.7	79.3%	261	17
POFT	2.7	82.4%	68	10
ENGL	2.6	80.4%	224	21
ITSC	2.6	88.2%	76	4
POFI	2.6	86.4%	22	2
PSYC	2.6	78.6%	98	8
HRPO	2.5	87.5%	16	1
HUMA	2.5	75.6%	41	3
RNSG	2.3	77.0%	322	16
ACCT	2.2	93.3%	15	3
<b>Grand Total</b>	<b>3.0</b>	<b>80.8%</b>	<b>3,489</b>	<b>332</b>

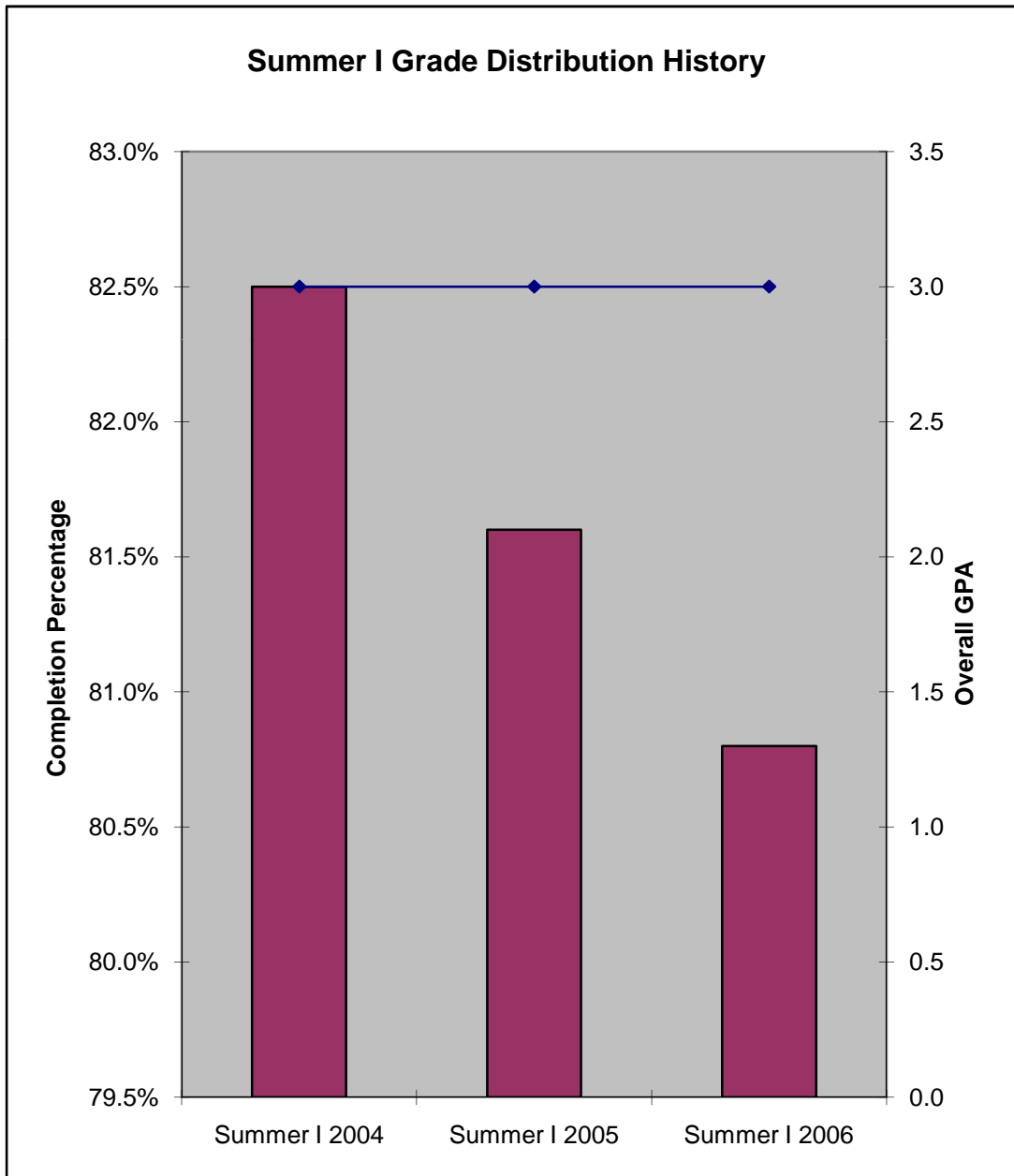
**Area Grade Summary By Completion Percentage**  
**Lee College - Baytown Campus**  
**Summer I 2006 Grade Distribution Summary**  
**Table 3**

Subject Area	Average GPA	Percent of Completers	Total Headcount	Number of Sections
ACNT	4.0	100.0%	1	1
COMM	4.0	100.0%	1	1
CRIJ	3.6	100.0%	10	2
DRAM	4.0	100.0%	5	2
GEOG	3.0	100.0%	9	1
ITSE	4.0	100.0%	2	1
LGLA	3.5	100.0%	19	3
MUEN	4.0	100.0%	2	1
TECA	3.9	100.0%	7	1
MUAP	4.0	95.2%	21	11
PHYS	3.2	95.2%	21	2
ACCT	2.2	93.3%	15	3
GEOG	3.3	92.3%	13	1
IBUS	3.1	90.9%	11	1
SPCH	3.3	90.7%	75	5
VNSG	3.9	90.7%	215	17
CSME	3.0	90.2%	122	22
SOCI	2.8	89.7%	29	2
ARTS	3.1	88.7%	62	14
ITSC	2.6	88.2%	76	4
MUSI	3.3	88.2%	51	6
HITT	3.3	88.1%	67	6
ITCC	3.7	88.0%	25	4
SCIT	3.2	88.0%	25	2
HRPO	2.5	87.5%	16	1
BUSI	2.9	86.8%	68	5
POFI	2.6	86.4%	22	2
AIRP	3.4	86.2%	29	7
ITSW	3.3	85.7%	7	1
SPAN	3.7	85.7%	14	1
TECM	3.3	83.8%	37	3
POFT	2.7	82.4%	68	10
INTC	3.2	81.8%	55	5
DAAC	3.5	81.5%	27	4
CHEM	2.9	81.3%	16	1
ENGL	2.6	80.4%	224	21
GOVT	2.8	80.0%	200	7
PHIL	2.8	80.0%	25	3
BIOL	2.7	79.3%	261	17
DFTG	3.9	78.7%	61	10
ELPT	3.0	78.6%	98	7
PSYC	2.6	78.6%	98	8
KINE	3.3	78.0%	123	14
RNSG	2.3	77.0%	322	16
WLDG	3.4	76.5%	119	15
ARCH	3.6	76.2%	21	5
CPMT	3.5	76.2%	21	3
HUMA	2.5	75.6%	41	3
ECON	2.8	74.2%	66	4
PTAC	3.5	73.3%	191	13
BCIS	3.0	73.2%	41	2
MATH	2.8	70.3%	74	10
COSC	3.2	69.4%	36	3
HIST	3.2	69.3%	137	10
MCHN	3.6	68.8%	16	1
BMGT	2.8	68.4%	19	3
PFPB	3.7	65.4%	52	4
<b>Grand Total</b>	<b>3.0</b>	<b>80.8%</b>	<b>3,489</b>	<b>332</b>

### Three Year Comparison By Completion Percentage & GPA

Lee College - Baytown Campus  
Summer I Grade Distribution History  
Table 4/Chart 1

	Completion Percentage	GPA
Summer I 2004	82.5%	3.0
Summer I 2005	81.6%	3.0
Summer I 2006	80.8%	3.0

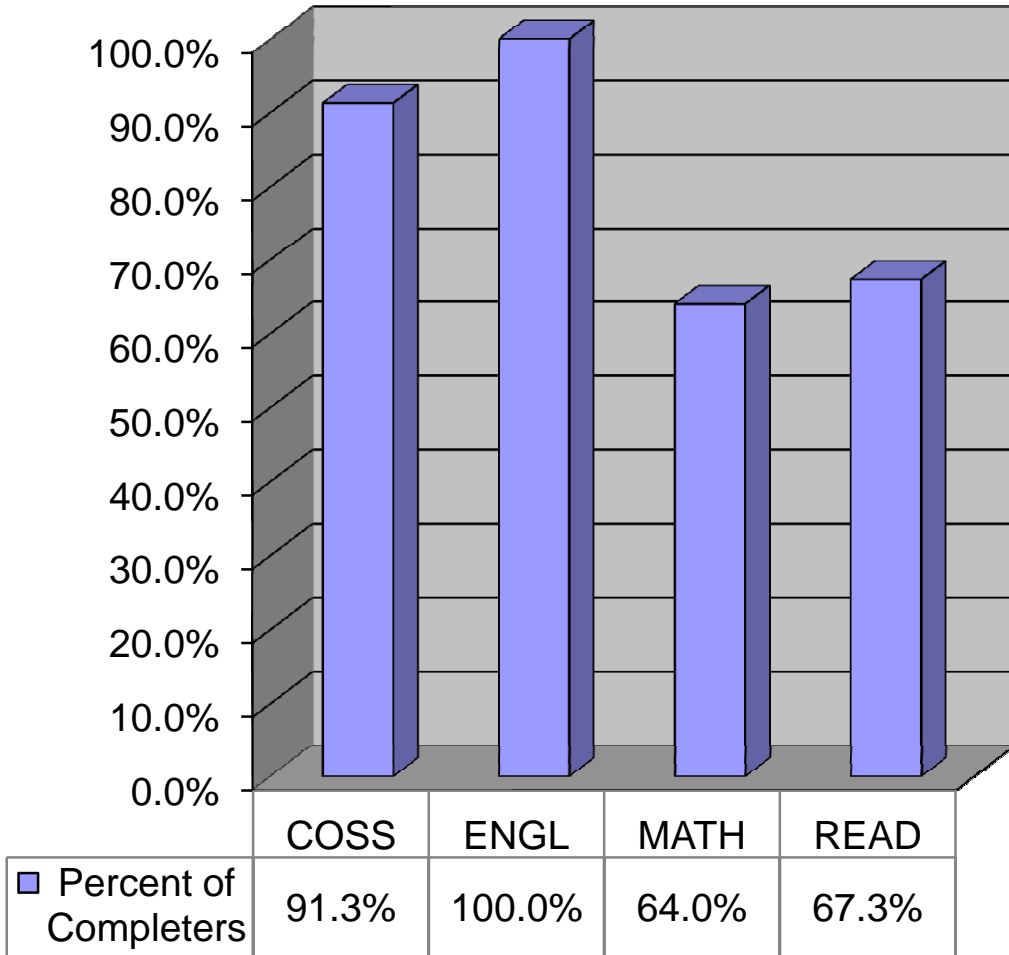


## Developmental Education Completion Percentage By Subject Area

Lee College - Baytown Campus  
 Summer I 2006 Grade Distribution Summary  
 Table 5/Chart 2

Subject Area	Percent of Completers	Total Headcount	Number of Sections
COSS	91.3%	23	2
ENGL	100.0%	9	2
MATH	64.0%	164	24
READ	67.3%	37	28
<b>Grand Total</b>	<b>73.8%</b>	<b>233</b>	<b>32</b>

Percent of Completers



**Area Grade Summary By Subject Area**  
**Lee College - Huntsville Campus**  
**Summer I 2006 Grade Distribution Summary**  
**Table 6**

<b>Subject Area</b>	<b>Average GPA</b>	<b>Percent Of Completers</b>	<b>Total Headcount</b>	<b>Number of Sections</b>
ABDR	3.4	86.7%	45	3
ACCT	3.8	92.4%	66	3
ARTS	2.7	97.9%	48	2
AUMT	3.1	94.3%	35	3
BIOL	3.5	100.0%	30	2
BMGT	2.5	92.6%	27	1
BUSI	3.2	94.8%	97	5
COSC	3.1	100.0%	20	1
CPMT	3.9	100.0%	36	2
CRPT	4.0	92.3%	13	1
CVOP	3.6	100.0%	128	8
ECON	4.0	100.0%	26	1
ENGL	3.4	89.7%	185	12
GOVT	3.3	85.7%	28	1
HALT	3.8	100.0%	52	3
HART	3.1	93.8%	65	3
HIST	3.8	89.2%	74	3
ITSC	3.4	98.7%	76	5
MATH	2.8	92.9%	14	1
POFI	2.9	100.0%	14	1
PSYC	3.3	87.5%	80	3
SOCI	3.7	100.0%	25	1
TECM	4.0	92.3%	13	1
WLDG	2.9	96.4%	56	3
<b>Grand Total</b>	<b>3.4</b>	<b>94.3%</b>	<b>1,253</b>	<b>69</b>

**Area Grade Summary By Average GPA**  
**Lee College - Huntsville Campus**  
**Summer I 2006 Grade Distribution Summary**  
**Table 7**

<b>Subject Area</b>	<b>Average GPA</b>	<b>Percent Of Completers</b>	<b>Total Headcount</b>	<b>Number of Sections</b>
CRPT	4.0	92.3%	13	1
ECON	4.0	100.0%	26	1
TECM	4.0	92.3%	13	1
CPMT	3.9	100.0%	36	2
ACCT	3.8	92.4%	66	3
HALT	3.8	100.0%	52	3
HIST	3.8	89.2%	74	3
SOCI	3.7	100.0%	25	1
CVOP	3.6	100.0%	128	8
BIOL	3.5	100.0%	30	2
ABDR	3.4	86.7%	45	3
ENGL	3.4	89.7%	185	12
ITSC	3.4	98.7%	76	5
GOVT	3.3	85.7%	28	1
PSYC	3.3	87.5%	80	3
BUSI	3.2	94.8%	97	5
AUMT	3.1	94.3%	35	3
COSC	3.1	100.0%	20	1
HART	3.1	93.8%	65	3
POFI	2.9	100.0%	14	1
WLDG	2.9	96.4%	56	3
MATH	2.8	92.9%	14	1
ARTS	2.7	97.9%	48	2
BMGT	2.5	92.6%	27	1
<b>Grand Total</b>	<b>3.4</b>	<b>94.3%</b>	<b>1,253</b>	<b>69</b>

**Area Grade Summary By Completion Percentage**  
**Lee College - Huntsville Campus**  
**Summer I 2006 Grade Distribution Summary**  
**Table 8**

<b>Subject Area</b>	<b>Average GPA</b>	<b>Percent Of Completers</b>	<b>Total Headcount</b>	<b>Number of Sections</b>
BIOL	3.5	100.0%	30	2
COSC	3.1	100.0%	20	1
CPMT	3.9	100.0%	36	2
CVOP	3.6	100.0%	128	8
ECON	4.0	100.0%	26	1
HALT	3.8	100.0%	52	3
POFI	2.9	100.0%	14	1
SOCI	3.7	100.0%	25	1
ITSC	3.4	98.7%	76	5
ARTS	2.7	97.9%	48	2
WLDG	2.9	96.4%	56	3
BUSI	3.2	94.8%	97	5
AUMT	3.1	94.3%	35	3
HART	3.1	93.8%	65	3
MATH	2.8	92.9%	14	1
BMGT	2.5	92.6%	27	1
ACCT	3.8	92.4%	66	3
CRPT	4.0	92.3%	13	1
TECM	4.0	92.3%	13	1
ENGL	3.4	89.7%	185	12
HIST	3.8	89.2%	74	3
PSYC	3.3	87.5%	80	3
ABDR	3.4	86.7%	45	3
GOVT	3.3	85.7%	28	1
<b>Grand Total</b>	<b>3.4</b>	<b>94.3%</b>	<b>1,253</b>	<b>69</b>

**Three Year Comparison By Completion Percentage & GPA**  
**Lee College - Huntsville Campus**  
**Summer I Grade Distribution History**  
**Table 9/Chart 3**

	<b>Completion Percentage</b>	<b>GPA</b>
<b>Summer I 2004</b>	95.0%	3.4
<b>Summer I 2005</b>	94.1%	3.4
<b>Summer I 2006</b>	94.3%	3.4

