



Grade Distribution Report

Summer I 2007







Prepared:
January, 2008

Summer I 2007 Grade Distribution Report

The Summer I 2007 Grade Distribution Report contains GPA and Completion Percentage data reported by Subject Area. The Summer I 2007 data are compared with Summer I 2006 and Summer I 2005.

The data in this report are summarized from detailed class grade reports produced by the Office of Institutional research. These detailed reports are provided to the President, Deans, and Division Chairs. Faculty members may request detailed information from the Chair or from the Office of Institutional Research.

Highlights of the Report

-  Overall GPA for the Baytown Campus (all students excluding Huntsville) was 3.1 for Summer I 2007, up from 3.0 from Summer I 2006 and Summer I 2005.
-  Overall percentage of students completing non-developmental classes for the Baytown Campus was 81.6% for Summer I 2007, up 0.8% from Summer I 2006 (80.8%), and unchanged from Summer I 2005 (81.6%).
-  Overall percentage of students completing developmental classes for the Baytown campus was 75.2%.
-  Overall GPA for the Huntsville Campus was 3.4 for Summer I 2007, unchanged from Summer I 2006 and Summer I 2005.
-  Overall percentage of students completing non-developmental classes for the Huntsville campus was 96.0%, up 1.7% from Summer I 2006 (94.3%), and up 1.9% from Summer I 2005 (94.1%).
-  Overall percentage of students completing developmental classes for the Huntsville campus was 96.3%.

Table/Chart Guide

Table/Chart	Contents	Campus	Page
Table 1	Area Grade Summary By Subject Area	Baytown	2
Table 2	Area Grade Summary By Average GPA	Baytown	3
Table 3	Area Grade Summary By Completion Percentage	Baytown	4
Table 4/Chart 1	Three Year Comparison By Completion Percentage & GPA	Baytown	5
Table 5/Chart 2	Developmental Education Completion Percentage By Subject Area	Baytown	6
Table 6	Area Grade Summary By Subject Area	Huntsville	7
Table 7	Area Grade Summary By Average GPA	Huntsville	8
Table 8	Area Grade Summary By Completion Percentage	Huntsville	9
Table 9/Chart 3	Three Year Comparison By Completion Percentage & GPA	Huntsville	10
Table 10/Chart 4	Developmental Education Completion Percentage By Area	Huntsville	11

Area Grade Summary By Subject Area
Lee College - Baytown Campus
Summer I 2007 Grade Distribution Summary
Table 1

Subject Area	Average GPA	Percent of Completers	Total Headcount	Number of Sections
ACCT	2.5	87.8%	41	4
ACNT	4.0	100.0%	1	1
AIRP	3.5	97.0%	33	5
ARCH	3.4	75.0%	12	4
ARTS	3.2	79.6%	49	10
BCIS	3.1	71.4%	49	2
BIOL	2.9	73.8%	221	15
BMGT	3.4	82.2%	45	7
BUSI	3.0	71.9%	57	3
CHEM	3.1	86.2%	29	2
COMM	4.0	80.0%	5	1
COSC	3.1	60.0%	50	3
CPMT	3.5	100.0%	11	2
CRIJ	3.4	81.0%	21	3
CSME	3.0	96.5%	115	22
DAAC	3.4	68.8%	16	4
DFTG	3.5	85.4%	123	11
DRAM	3.5	68.8%	16	1
ECON	2.7	88.9%	72	4
EDUC	4.0	85.7%	7	2
ELPT	3.1	72.4%	105	7
ENGL	2.6	81.3%	182	15
GEOG	2.1	90.9%	11	1
GOVT	2.6	79.2%	183	8
HIST	3.2	75.0%	128	9
HITT	3.1	85.1%	47	7
HRPO	3.0	72.2%	18	1
HUMA	2.8	85.2%	27	2
IBUS	3.0	77.8%	9	1
INTC	3.3	83.1%	89	6
ITCC	3.6	88.2%	17	2
ITSC	3.1	81.4%	86	5
KINE	3.4	82.0%	122	16
LGLA	3.6	94.1%	17	3
MATH	2.6	78.0%	82	9
MCHN	3.6	86.0%	43	3
MRKG	2.5	88.9%	9	1
MRMT	3.0	100.0%	2	1
MUAP	4.0	100.0%	19	12
MUEN	4.0	100.0%	1	1
MUSI	2.9	81.1%	53	2
OSHT	3.7	81.3%	16	2
PFPB	3.4	82.1%	95	6
PHIL	3.1	83.9%	31	4
PHYS	3.8	92.3%	13	2
POFI	2.3	88.9%	36	2
POFT	3.0	85.7%	98	12
PSYC	2.9	76.6%	77	7
PTAC	2.5	88.7%	195	12
RNSG	2.4	67.6%	306	14
SCIT	3.8	86.7%	15	1
SGNL	3.6	100.0%	7	2
SOCI	2.6	100.0%	17	1
SPAN	3.1	100.0%	30	5
SPCH	3.1	90.4%	94	7
TECA	4.0	40.0%	5	1
TECM	3.0	78.0%	41	3
VNSG	3.9	92.8%	359	17
WLDG	3.3	75.9%	220	18
Grand Total	3.1	81.6%	3,878	334

Area Grade Summary By Average GPA
Lee College - Baytown Campus
Summer I 2007 Grade Distribution Summary
Table 2

Subject Area	Average GPA	Percent of Completers	Total Headcount	Number of Sections
ACNT	4.0	100.0%	1	1
COMM	4.0	80.0%	5	1
EDUC	4.0	85.7%	7	2
MUAP	4.0	100.0%	19	12
MUEN	4.0	100.0%	1	1
TECA	4.0	40.0%	5	1
VNSG	3.9	92.8%	359	17
PHYS	3.8	92.3%	13	2
SCIT	3.8	86.7%	15	1
OSHT	3.7	81.3%	16	2
ITCC	3.6	88.2%	17	2
LGLA	3.6	94.1%	17	3
MCHN	3.6	86.0%	43	3
SGNL	3.6	100.0%	7	2
AIRP	3.5	97.0%	33	5
CPMT	3.5	100.0%	11	2
DFTG	3.5	85.4%	123	11
DRAM	3.5	68.8%	16	1
ARCH	3.4	75.0%	12	4
BMGT	3.4	82.2%	45	7
CRIJ	3.4	81.0%	21	3
DAAC	3.4	68.8%	16	4
KINE	3.4	82.0%	122	16
PFPB	3.4	82.1%	95	6
INTC	3.3	83.1%	89	6
WLDG	3.3	75.9%	220	18
ARTS	3.2	79.6%	49	10
HIST	3.2	75.0%	128	9
BCIS	3.1	71.4%	49	2
CHEM	3.1	86.2%	29	2
COSC	3.1	60.0%	50	3
ELPT	3.1	72.4%	105	7
HITT	3.1	85.1%	47	7
ITSC	3.1	81.4%	86	5
PHIL	3.1	83.9%	31	4
SPAN	3.1	100.0%	30	5
SPCH	3.1	90.4%	94	7
BUSI	3.0	71.9%	57	3
CSME	3.0	96.5%	115	22
HRPO	3.0	72.2%	18	1
IBUS	3.0	77.8%	9	1
MRMT	3.0	100.0%	2	1
POFT	3.0	85.7%	98	12
TECM	3.0	78.0%	41	3
BIOL	2.9	73.8%	221	15
MUSI	2.9	81.1%	53	2
PSYC	2.9	76.6%	77	7
HUMA	2.8	85.2%	27	2
ECON	2.7	88.9%	72	4
ENGL	2.6	81.3%	182	15
GOVT	2.6	79.2%	183	8
MATH	2.6	78.0%	82	9
SOCI	2.6	100.0%	17	1
ACCT	2.5	87.8%	41	4
MRKG	2.5	88.9%	9	1
PTAC	2.5	88.7%	195	12
RNSG	2.4	67.6%	306	14
POFI	2.3	88.9%	36	2
GEOG	2.1	90.9%	11	1
Grand Total	3.1	81.6%	3,878	334

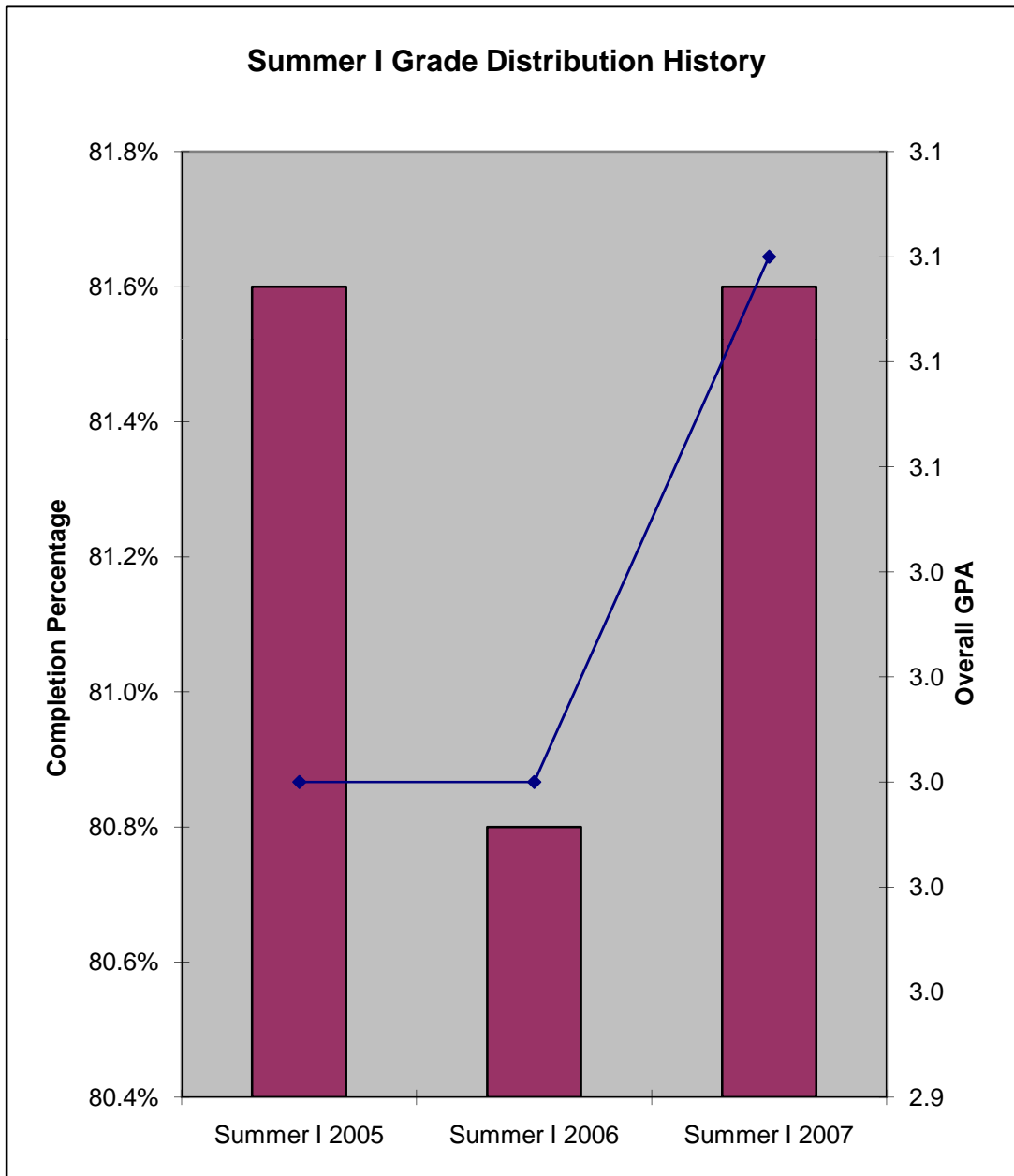
Area Grade Summary By Completion Percentage
Lee College - Baytown Campus
Summer I 2007 Grade Distribution Summary
Table 3

Subject Area	Average GPA	Percent of Completers	Total Headcount	Number of Sections
ACNT	4.0	100.0%	1	1
CPMT	3.5	100.0%	11	2
MRMT	3.0	100.0%	2	1
MUAP	4.0	100.0%	19	12
MUEN	4.0	100.0%	1	1
SGNL	3.6	100.0%	7	2
SOCI	2.6	100.0%	17	1
SPAN	3.1	100.0%	30	5
AIRP	3.5	97.0%	33	5
CSME	3.0	96.5%	115	22
LGLA	3.6	94.1%	17	3
VNSG	3.9	92.8%	359	17
PHYS	3.8	92.3%	13	2
GEOG	2.1	90.9%	11	1
SPCH	3.1	90.4%	94	7
ECON	2.7	88.9%	72	4
MRKG	2.5	88.9%	9	1
POFI	2.3	88.9%	36	2
PTAC	2.5	88.7%	195	12
ITCC	3.6	88.2%	17	2
ACCT	2.5	87.8%	41	4
SCIT	3.8	86.7%	15	1
CHEM	3.1	86.2%	29	2
MCHN	3.6	86.0%	43	3
EDUC	4.0	85.7%	7	2
POFT	3.0	85.7%	98	12
DFTG	3.5	85.4%	123	11
HUMA	2.8	85.2%	27	2
HITT	3.1	85.1%	47	7
PHIL	3.1	83.9%	31	4
INTC	3.3	83.1%	89	6
BMGT	3.4	82.2%	45	7
PFPB	3.4	82.1%	95	6
KINE	3.4	82.0%	122	16
ITSC	3.1	81.4%	86	5
ENGL	2.6	81.3%	182	15
OSHT	3.7	81.3%	16	2
MUSI	2.9	81.1%	53	2
CRIJ	3.4	81.0%	21	3
COMM	4.0	80.0%	5	1
ARTS	3.2	79.6%	49	10
GOVT	2.6	79.2%	183	8
MATH	2.6	78.0%	82	9
TECM	3.0	78.0%	41	3
IBUS	3.0	77.8%	9	1
PSYC	2.9	76.6%	77	7
WLDG	3.3	75.9%	220	18
ARCH	3.4	75.0%	12	4
HIST	3.2	75.0%	128	9
BIOL	2.9	73.8%	221	15
ELPT	3.1	72.4%	105	7
HRPO	3.0	72.2%	18	1
BUSI	3.0	71.9%	57	3
BCIS	3.1	71.4%	49	2
DAAC	3.4	68.8%	16	4
DRAM	3.5	68.8%	16	1
RNSG	2.4	67.6%	306	14
COSC	3.1	60.0%	50	3
TECA	4.0	40.0%	5	1
Grand Total	3.1	81.6%	3,878	334

Three Year Comparison By Completion Percentage & GPA

Lee College - Baytown Campus
Summer I Grade Distribution History
Table 4/Chart 1

	Completion Percentage	GPA
Summer I 2005	81.6%	3.0
Summer I 2006	80.8%	3.0
Summer I 2007	81.6%	3.1

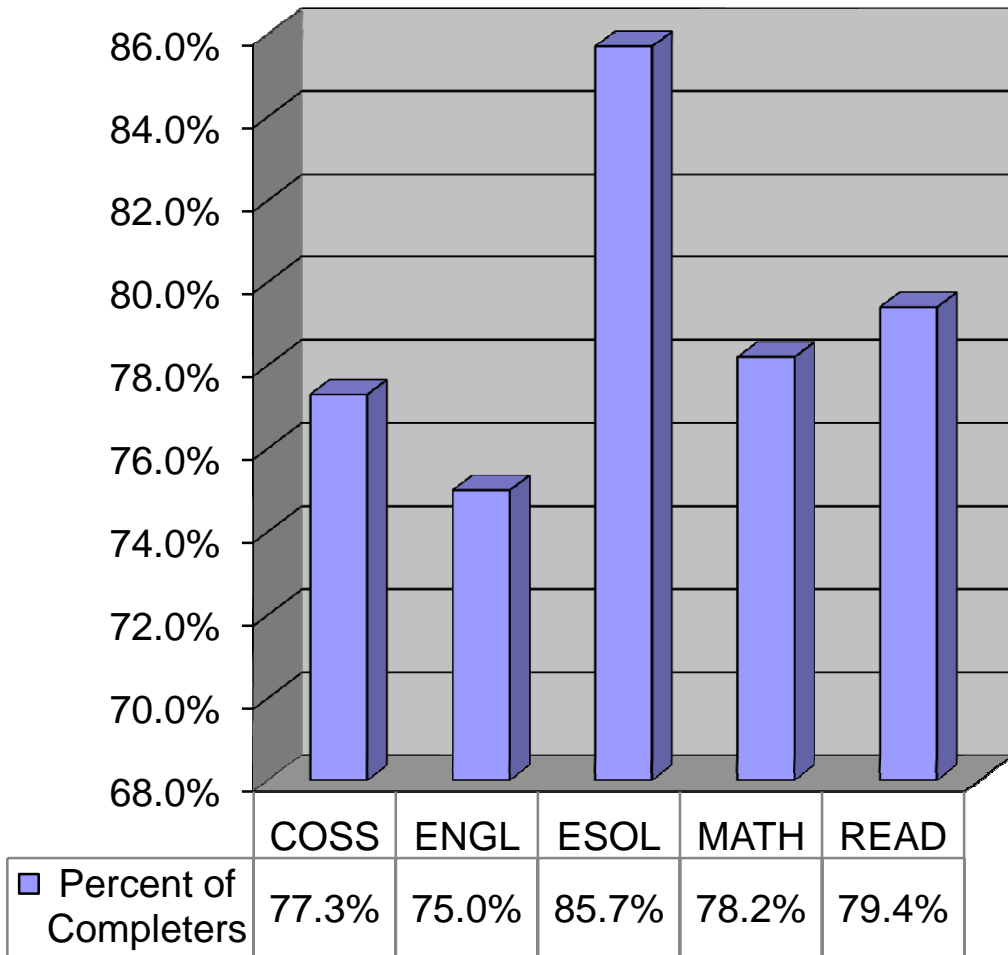


Developmental Education Completion Percentage By Subject Area

Lee College - Baytown Campus
 Summer I 2007 Grade Distribution Summary
 Table 5/Chart 2

Subject Area	Percent of Completers	Total Headcount	Number of Sections
COSS	77.3%	22	2
ENGL	75.0%	12	2
ESOL	85.7%	7	1
MATH	78.2%	162	18
READ	79.4%	63	5
Grand Total	75.2%	266	28

Percent of Completers



Area Grade Summary By Subject Area
Lee College - Huntsville Campus
Summer I 2007 Grade Distribution Summary
Table 6

Subject Area	Average GPA	Percent Of Completers	Total Headcount	Number of Sections
ABDR	3.9	100.0%	16	2
ACCT	3.7	97.6%	42	2
AUMT	2.8	100.0%	16	1
BIOL	3.4	82.1%	56	2
BMGT	3.9	87.5%	32	1
BUSI	3.3	95.6%	90	4
CHEF	4.0	100.0%	34	2
COSC	3.4	98.1%	52	3
CPMT	3.4	95.0%	40	2
CRPT	3.6	89.5%	19	1
CVOP	3.2	100.0%	104	8
ECON	4.0	98.4%	63	2
ENGL	3.3	97.0%	164	8
GOVT	3.3	97.2%	71	3
HALT	3.7	96.4%	28	2
HART	3.1	100.0%	16	1
HIST	3.5	97.0%	67	3
ITSC	3.4	100.0%	21	1
ITSE	3.2	100.0%	80	5
ITSW	3.6	100.0%	14	1
MATH	2.4	88.5%	61	4
PSTR	4.0	100.0%	17	1
SOCI	3.6	94.6%	147	5
SPCH	3.3	96.2%	79	5
TECM	3.6	89.5%	19	1
WDWK	3.8	100.0%	15	1
Grand Total	3.4	96.0%	1,363	71

Area Grade Summary By Average GPA
Lee College - Huntsville Campus
Summer I 2007 Grade Distribution Summary
Table 7

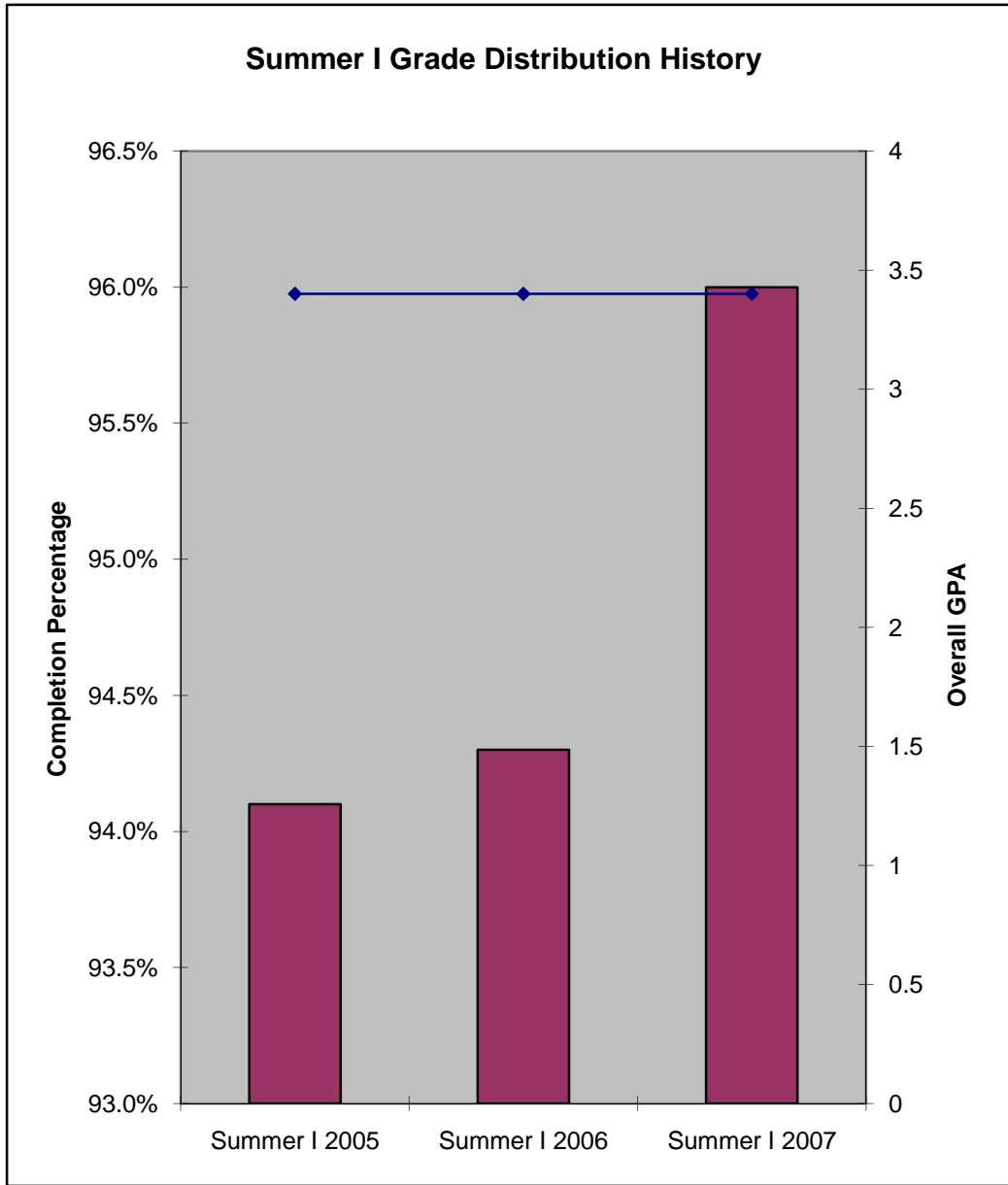
Subject Area	Average GPA	Percent Of Completers	Total Headcount	Number of Sections
CHEF	4.0	100.0%	34	2
ECON	4.0	98.4%	63	2
PSTR	4.0	100.0%	17	1
ABDR	3.9	100.0%	16	2
BMGT	3.9	87.5%	32	1
WDWK	3.8	100.0%	15	1
ACCT	3.7	97.6%	42	2
HALT	3.7	96.4%	28	2
CRPT	3.6	89.5%	19	1
ITSW	3.6	100.0%	14	1
SOCI	3.6	94.6%	147	5
TECM	3.6	89.5%	19	1
HIST	3.5	97.0%	67	3
BIOL	3.4	82.1%	56	2
COSC	3.4	98.1%	52	3
CPMT	3.4	95.0%	40	2
ITSC	3.4	100.0%	21	1
BUSI	3.3	95.6%	90	4
ENGL	3.3	97.0%	164	8
GOVT	3.3	97.2%	71	3
SPCH	3.3	96.2%	79	5
CVOP	3.2	100.0%	104	8
ITSE	3.2	100.0%	80	5
HART	3.1	100.0%	16	1
AUMT	2.8	100.0%	16	1
MATH	2.4	88.5%	61	4
Grand Total	3.4	96.0%	1,363	71

Area Grade Summary By Completion Percentage
Lee College - Huntsville Campus
Summer I 2007 Grade Distribution Summary
Table 8

Subject Area	Average GPA	Percent Of Completers	Total Headcount	Number of Sections
ABDR	3.9	100.0%	16	2
AUMT	2.8	100.0%	16	1
CHEF	4.0	100.0%	34	2
CVOP	3.2	100.0%	104	8
HART	3.1	100.0%	16	1
ITSC	3.4	100.0%	21	1
ITSE	3.2	100.0%	80	5
ITSW	3.6	100.0%	14	1
PSTR	4.0	100.0%	17	1
WDWK	3.8	100.0%	15	1
ECON	4.0	98.4%	63	2
COSC	3.4	98.1%	52	3
ACCT	3.7	97.6%	42	2
GOVT	3.3	97.2%	71	3
ENGL	3.3	97.0%	164	8
HIST	3.5	97.0%	67	3
HALT	3.7	96.4%	28	2
SPCH	3.3	96.2%	79	5
BUSI	3.3	95.6%	90	4
CPMT	3.4	95.0%	40	2
SOCI	3.6	94.6%	147	5
CRPT	3.6	89.5%	19	1
TECM	3.6	89.5%	19	1
MATH	2.4	88.5%	61	4
BMGT	3.9	87.5%	32	1
BIOL	3.4	82.1%	56	2
Grand Total	3.4	96.0%	1,363	71

Three Year Comparison By Completion Percentage & GPA
Lee College - Huntsville Campus
Summer I Grade Distribution History
Table 9/Chart 3

	Completion Percentage	GPA
Summer I 2005	94.1%	3.4
Summer I 2006	94.3%	3.4
Summer I 2007	96.0%	3.4



Developmental Education Completion Percentage By Subject Area
Lee College - Huntsville Campus
Summer I 2007 Grade Distribution Summary
Table 10/Chart 4

Subject Area	Percent of Completers	Total Headcount	Number of Sections
ENGL	83.3%	6	4
MATH	97.2%	141	18
READ	93.3%	15	4
Grand Total	96.3%	162	26

Percent of Completers

