



Grade Distribution Report

Summer II 2005






Prepared:
January, 2008

Summer II 2005 Grade Distribution Report

The Summer II 2005 Grade Distribution Report contains GPA and Completion Percentage data reported by Subject Area. The Summer II 2005 data are compared with Summer II 2004 and Summer II 2003.

The data in this report are summarized from detailed class grade reports produced by the Office of Institutional research. These detailed reports are provided to the President, Deans, and Division Chairs. Faculty members may request detailed information from the Chair or from the Office of Institutional Research.

Highlights of the Report

-  Overall GPA for the Baytown Campus (all students excluding Huntsville) was 2.8, down from Summer II 2004 (3.1), and down from Summer II 2003 (2.9).
-  Overall percentage of students completing non-developmental classes for the Baytown Campus was 85.4% for Summer II 2005, down 0.7% from Summer II 2004 (86.1%), and up 0.4% from Summer II 2003 (85.0%).
-  Overall percentage of students completing developmental classes for the Baytown campus was 79.1%.
-  Overall GPA for the Huntsville campus was 3.1, down from Summer II 2004 and Summer II 2003 (3.6).
-  Overall percentage of students completing non-developmental classes for the Huntsville campus was 95.4%, up 2.3% from Summer II 2004 (93.1%), and down 3.8% from Summer II 2003 (99.2%).

Table/Chart Guide

Table/Chart	Contents	Campus	Page
Table 1	Area Grade Summary By Subject Area	Baytown	2
Table 2	Area Grade Summary By Average GPA	Baytown	3
Table 3	Area Grade Summary By Completion Percentage	Baytown	4
Table 4/Chart 1	Three Year Comparison By Completion Percentage & GPA	Baytown	5
Table 5/Chart 2	Developmental Education Completion Percentage By Subject Area	Baytown	6
Table 6	Area Grade Summary By Subject Area	Huntsville	7
Table 7	Area Grade Summary By Average GPA	Huntsville	8
Table 8	Area Grade Summary By Completion Percentage	Huntsville	9
Table 9/Chart 3	Three Year Comparison By Completion Percentage & GPA	Huntsville	10

Area Grade Summary By Subject Area
Lee College - Baytown Campus
Summer II 2005 Grade Distribution Summary
Table 1

Subject Area	Average GPA	Percent of Completers	Total Headcount	Number of Sections
ACCT	3.0	75.0%	16	1
CHEM	3.0	75.0%	16	2
COSC	3.1	92.9%	14	1
CSME	3.7	100.0%	3	3
DAAC	3.5	85.7%	7	2
DRAM	0.0	0.0%	1	1
ECON	3.1	96.0%	25	2
ENGL	2.7	85.7%	112	11
GEOL	3.0	100.0%	9	1
GOVT	2.8	78.3%	115	4
HIST	2.6	95.1%	82	3
HUMA	3.3	92.9%	14	2
ITSC	2.9	72.7%	11	1
KINE	3.5	72.7%	44	4
MATH	1.6	69.4%	36	3
MUAP	3.8	100.0%	13	6
MUSI	3.8	95.2%	21	4
PHIL	2.8	85.7%	7	1
PHYS	3.5	100.0%	2	1
PSYC	2.7	94.9%	39	3
RNSG	2.1	88.8%	80	4
SOCI	3.8	80.0%	10	2
SPAN	3.0	100.0%	11	1
SPCH	3.2	81.7%	60	3
TECA	3.8	100.0%	6	1
Grand Total	2.8	85.4%	754	67

Area Grade Summary By Average GPA
Lee College - Baytown Campus
Summer II 2005 Grade Distribution Summary
Table 2

Subject Area	Average GPA	Percent of Completers	Total Headcount	Number of Sections
MUAP	3.8	100.0%	13	6
MUSI	3.8	95.2%	21	4
SOCI	3.8	80.0%	10	2
TECA	3.8	100.0%	6	1
CSME	3.7	100.0%	3	3
DAAC	3.5	85.7%	7	2
KINE	3.5	72.7%	44	4
PHYS	3.5	100.0%	2	1
HUMA	3.3	92.9%	14	2
SPCH	3.2	81.7%	60	3
COSC	3.1	92.9%	14	1
ECON	3.1	96.0%	25	2
ACCT	3.0	75.0%	16	1
CHEM	3.0	75.0%	16	2
GEOL	3.0	100.0%	9	1
SPAN	3.0	100.0%	11	1
ITSC	2.9	72.7%	11	1
GOVT	2.8	78.3%	115	4
PHIL	2.8	85.7%	7	1
ENGL	2.7	85.7%	112	11
PSYC	2.7	94.9%	39	3
HIST	2.6	95.1%	82	3
RNSG	2.1	88.8%	80	4
MATH	1.6	69.4%	36	3
DRAM	0.0	0.0%	1	1
Grand Total	2.8	85.4%	754	67

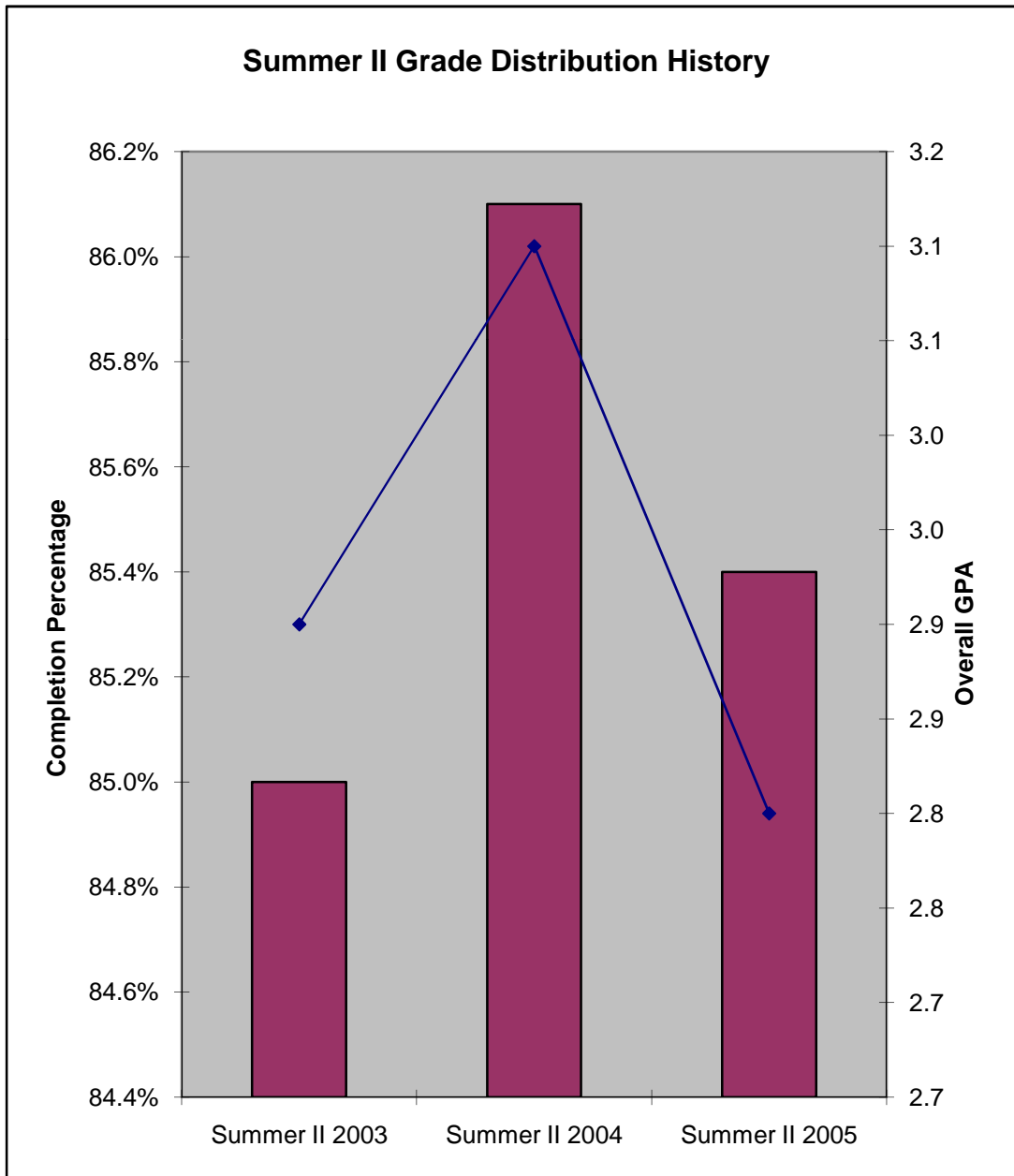
Area Grade Summary By Completion Percentage
Lee College - Baytown Campus
Summer II 2005 Grade Distribution Summary
Table 3

Subject Area	Average GPA	Percent of Completers	Total Headcount	Number of Sections
CSME	3.7	100.0%	3	3
GEOL	3.0	100.0%	9	1
MUAP	3.8	100.0%	13	6
PHYS	3.5	100.0%	2	1
SPAN	3.0	100.0%	11	1
TECA	3.8	100.0%	6	1
ECON	3.1	96.0%	25	2
MUSI	3.8	95.2%	21	4
HIST	2.6	95.1%	82	3
PSYC	2.7	94.9%	39	3
COSC	3.1	92.9%	14	1
HUMA	3.3	92.9%	14	2
RNSG	2.1	88.8%	80	4
DAAC	3.5	85.7%	7	2
ENGL	2.7	85.7%	112	11
PHIL	2.8	85.7%	7	1
SPCH	3.2	81.7%	60	3
SOCI	3.8	80.0%	10	2
GOVT	2.8	78.3%	115	4
ACCT	3.0	75.0%	16	1
CHEM	3.0	75.0%	16	2
ITSC	2.9	72.7%	11	1
KINE	3.5	72.7%	44	4
MATH	1.6	69.4%	36	3
DRAM	0.0	0.0%	1	1
Grand Total	2.8	85.4%	754	67

Three Year Comparison By Completion Percentage & GPA

Lee College - Baytown Campus
 Summer II Grade Distribution History
 Table 4/Chart 1

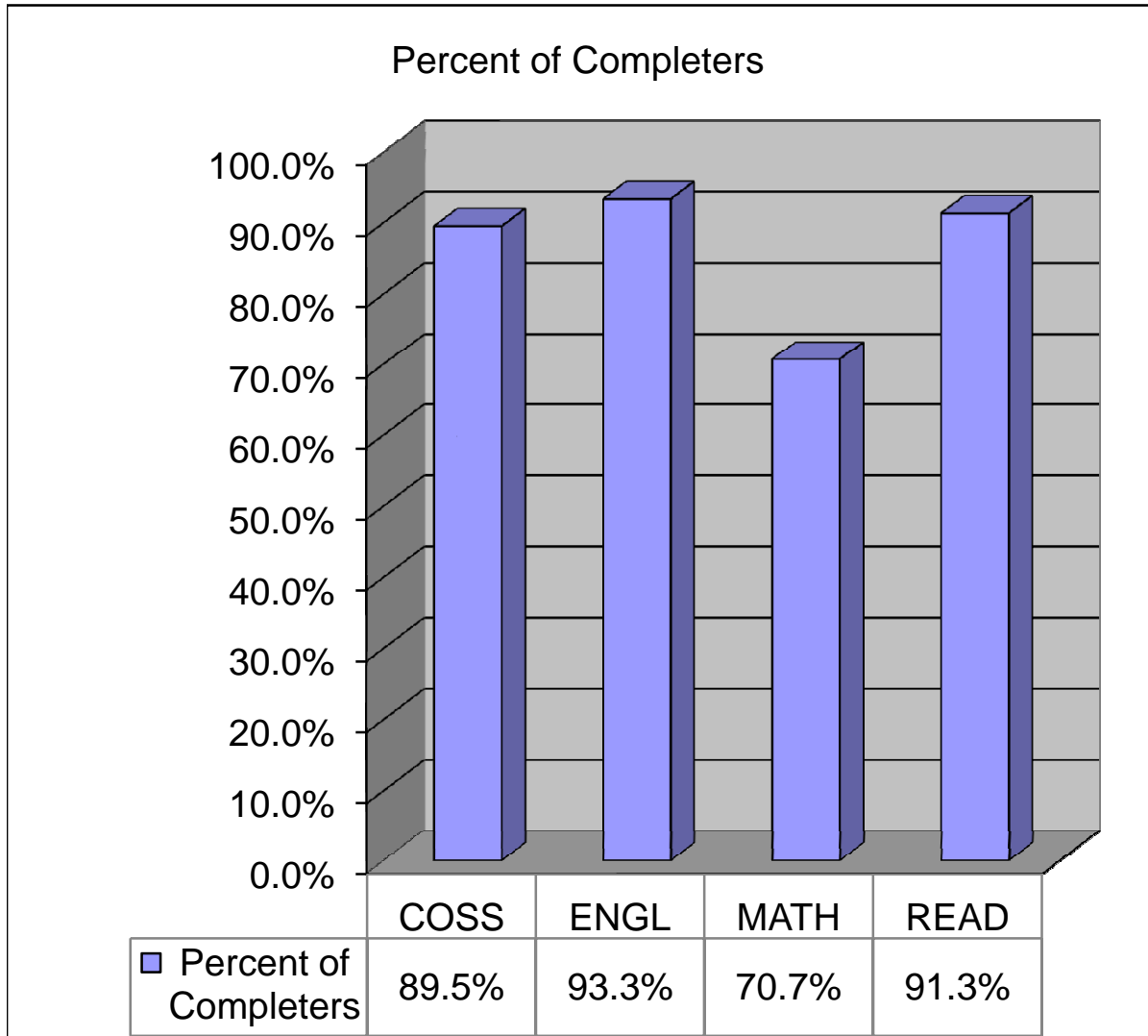
	Completion Percentage	GPA
Summer II 2003	85.0%	2.9
Summer II 2004	86.1%	3.1
Summer II 2005	85.4%	2.8



Developmental Education Completion Percentage By Subject Area

Lee College - Baytown Campus
 Summer II 2005 Grade Distribution Summary
 Table 5/Chart 2

Subject Area	Percent of Completers	Total Headcount	Number of Sections
COSS	89.5%	19	1
ENGL	93.3%	15	2
MATH	70.7%	82	17
READ	91.3%	23	2
TOTAL	79.1%	139	22



Area Grade Summary By Subject Area
Lee College - Huntsville Campus
Summer II 2005 Grade Distribution Summary
Table 6

Subject Area	Average GPA	Percent Of Completers	Total Headcount	Number of Sections
CETT	2.6	83.3%	24	2
CVOP	3.2	97.7%	128	8
<i>Grand Total</i>	3.1	95.4%	152	10

Area Grade Summary By Average GPA
Lee College - Huntsville Campus
Summer II 2005 Grade Distribution Summary
Table 7

Subject Area	Average GPA	Percent Of Completers	Total Headcount	Number of Sections
CVOP	3.2	97.7%	128	8
CETT	2.6	83.3%	24	2
Grand Total	3.1	95.4%	152	10

Area Grade Summary By Completion Percentage
Lee College - Huntsville Campus
Summer II 2005 Grade Distribution Summary
Table 8

Subject Area	Average GPA	Percent Of Completers	Total Headcount	Number of Sections
CVOP	3.2	97.7%	128	8
CETT	2.6	83.3%	24	2
<i>Grand Total</i>	3.1	95.4%	152	10

Three Year Comparison By Completion Percentage & GPA
Lee College - Huntsville Campus
Summer II Grade Distribution History
Table 9/Chart 3

	Completion Percentage	GPA
Summer II 2003	99.2%	3.6
Summer II 2004	93.1%	3.6
Summer II 2005	95.4%	3.1

