

Lee



College

Office of Institutional Research

Grade Distribution Report
Fall 2003

Prepared:
March, 2004

Fall 2003 Grade Distribution Report

The Fall 2003 Grade Distribution Report contains GPA and Completion Percentage data reported by Subject Area. The Fall 2003 data are compared with Fall 2002 and Fall 2001.

The data in this report are summarized from detailed class grade reports produced by the Office of Institutional research. These detailed reports are provided to the President, Deans, and Division Chairs. Faculty members may request detailed information from Division Chairs or from the Office of Institutional Research.

Highlights of the Report

- ⇒ Overall GPA for the Baytown Campus (all students excluding HC/LC) was 2.8, unchanged from Fall 2002, and down from 2.9 in Fall 2001.
- ⇒ Overall percentage of students completing non-developmental classes for the Baytown Campus was 77.8% for Fall 2003, down 0.5 percentage points from Fall 2002 (78.3%), and down by 3.9 percentage points from Fall 2001 (81.7%).
- ⇒ Overall percentage of students completing developmental classes for the Baytown campus was 69.4%.
- ⇒ Overall GPA for HC/LC was 3.4, up 0.1 percentage points from Fall 2002 and Fall 2001 (3.3).
- ⇒ Overall percentage of students completing non-developmental classes for the HC/LC campus was 94.9%, down 0.1 percentage points from Fall 2002 and Fall 2001 (95.0%).
- ⇒ Overall percentage of students completing developmental classes for the Huntsville campus was 90.8%.

Table Guide

Table	Contents	Site
Table 1	Area Grade Summary By Subject Area	Baytown
Table 2	Area Grade Summary By GPA	Baytown
Table 3	Area Grade Summary By Completion Percentage	Baytown
Table 4	3 Year History Chart - GPA and Completion Percentage	Baytown
Table 5	Developmental Education Completion Percentage By Area	Baytown
Table 6	Area Grade Summary By Subject Area	Huntsville
Table 7	Area Grade Summary By GPA	Huntsville
Table 8	Area Grade Summary By Completion Percentage	Huntsville
Table 9	3 Year History Chart - GPA and Completion Percentage	Huntsville
Table 10	Developmental Education Completion Percentage By Area	Huntsville

Table 1
Lee College - Baytown Campus
Fall 2003 Grade Distribution Summary
Sorted by Area

AREA	AVERAGE GPA	PERCENT COMPLETERS	TOTAL HEADCOUNT	NUMBER SECTIONS
ACCT	2.6	78.3%	143	7
ACNT	2.9	84.2%	177	11
AIRP	3.6	95.5%	88	9
ANTH	2.6	81.8%	11	1
ARCH	3.0	74.6%	67	5
ARTC	3.0	73.7%	19	1
ARTS	3.4	71.1%	249	31
BCIS	3.0	81.0%	42	2
BIOL	2.5	68.7%	834	33
BMGT	2.9	75.6%	127	8
BUSG	4.0	100.0%	1	1
BUSI	2.5	74.1%	174	8
CHEM	3.1	82.2%	101	7
CJSA	4.0	100.0%	1	1
COMM	2.4	66.7%	45	7
COSC	2.8	86.4%	273	15
CPMT	3.0	77.6%	170	11
CRJ	3.1	82.5%	154	8
CSME	3.2	67.7%	266	31
CTEC	3.1	91.7%	24	1
DAAC	3.4	73.0%	152	13
DFTG	2.3	85.3%	109	10
DRAM	3.5	77.3%	181	11
ECON	2.7	65.7%	99	5
EDUC	3.4	91.9%	86	5
ELPT	3.3	75.8%	285	18
EMSP	2.6	45.1%	144	11
ENGL	2.3	74.3%	1,220	70
ENVR	2.8	62.1%	58	3
GEOG	2.2	94.1%	34	1
GEOL	2.3	46.3%	82	4
GOVT	2.4	77.0%	557	19
HART	1.9	73.0%	37	3
HIST	2.3	70.2%	715	28
HITT	3.0	74.1%	290	19
HRPO	2.9	67.5%	40	2
HUMA	2.7	72.7%	326	18
IMED	4.0	58.3%	12	1
INTC	3.0	80.9%	251	15
ITCC	3.3	79.5%	44	3
ITNW	2.7	100.0%	7	1
ITSC	2.9	85.3%	373	20
ITSE	2.4	56.4%	55	3
ITSW	2.4	94.1%	17	2
KINE	3.2	79.0%	796	71
LGLA	3.4	93.6%	141	10
MATH	2.4	61.5%	382	23
MCHN	3.5	79.4%	63	8
MRKG	4.0	100.0%	1	1
MRMT	3.6	80.0%	15	3
MUAP	3.5	78.8%	118	61
MUEN	3.9	89.5%	86	15
MUSI	2.7	83.1%	248	21
NDTE	4.0	81.8%	11	1
PFPB	3.4	84.7%	98	10
PHED	3.2	69.3%	407	19
PHIL	2.4	74.7%	75	4
PHYS	3.0	87.8%	90	6
POFI	3.1	86.2%	195	11
POFT	3.0	89.1%	396	30
PSYC	2.2	79.8%	496	20
PTAC	3.2	79.4%	457	23
RNSG	2.5	88.7%	953	51
SCIT	2.9	78.1%	64	3
SOCI	2.2	79.7%	231	12
SPAN	3.3	67.0%	97	7
SPCH	2.8	79.2%	571	27
SPNL	3.3	85.2%	61	3
TECA	3.4	89.3%	197	14
TECM	3.1	76.9%	182	5
VNSG	2.7	93.0%	473	14
WLDG	3.5	76.3%	232	21
Total	2.8	77.8%	15,276	977

Table 2
Lee College - Baytown Campus
Fall 2003 Grade Distribution Summary
Sorted by Average GPA

AREA	AVERAGE GPA	PERCENT COMPLETERS	TOTAL HEADCOUNT	NUMBER SECTIONS
BUSG	4.0	100.0%	1	1
CJSA	4.0	100.0%	1	1
IMED	4.0	58.3%	12	1
MRKG	4.0	100.0%	1	1
NDTE	4.0	81.8%	11	1
MUEN	3.9	89.5%	86	15
AIRP	3.6	95.5%	88	9
MRMT	3.6	80.0%	15	3
DRAM	3.5	77.3%	181	11
MCHN	3.5	79.4%	63	8
MUAP	3.5	78.8%	118	61
WLDG	3.5	76.3%	232	21
ARTS	3.4	71.1%	249	31
DAAC	3.4	73.0%	152	13
EDUC	3.4	91.9%	86	5
LGLA	3.4	93.6%	141	10
PFPB	3.4	84.7%	98	10
TECA	3.4	89.3%	197	14
ELPT	3.3	75.8%	285	18
ITCC	3.3	79.5%	44	3
SPAN	3.3	67.0%	97	7
SPNL	3.3	85.2%	61	3
CSME	3.2	67.7%	266	31
KINE	3.2	79.0%	796	71
PHED	3.2	69.3%	407	19
PTAC	3.2	79.4%	457	23
CHEM	3.1	82.2%	101	7
CRIJ	3.1	82.5%	154	8
CTEC	3.1	91.7%	24	1
POFI	3.1	86.2%	195	11
TECM	3.1	76.9%	182	5
ARCH	3.0	74.6%	67	5
ARTC	3.0	73.7%	19	1
BCIS	3.0	81.0%	42	2
CPMT	3.0	77.6%	170	11
HITT	3.0	74.1%	290	19
INTC	3.0	80.9%	251	15
PHYS	3.0	87.8%	90	6
POFT	3.0	89.1%	396	30
ACNT	2.9	84.2%	177	11
BMGT	2.9	75.6%	127	8
HRPO	2.9	67.5%	40	2
ITSC	2.9	85.3%	373	20
SCIT	2.9	78.1%	64	3
COSC	2.8	86.4%	273	15
ENVR	2.8	62.1%	58	3
SPCH	2.8	79.2%	571	27
ECON	2.7	65.7%	99	5
HUMA	2.7	72.7%	326	18
ITNW	2.7	100.0%	7	1
MUSI	2.7	83.1%	248	21
VNSG	2.7	93.0%	473	14
ACCT	2.6	78.3%	143	7
ANTH	2.6	81.8%	11	1
EMSP	2.6	45.1%	144	11
BIOL	2.5	68.7%	834	33
BUSI	2.5	74.1%	174	8
RNSG	2.5	88.7%	953	51
COMM	2.4	66.7%	45	7
GOVT	2.4	77.0%	557	19
ITSE	2.4	56.4%	55	3
ITSW	2.4	94.1%	17	2
MATH	2.4	61.5%	382	23
PHIL	2.4	74.7%	75	4
DFTG	2.3	85.3%	109	10
ENGL	2.3	74.3%	1,220	70
GEOL	2.3	46.3%	82	4
HIST	2.3	70.2%	715	28
GEOG	2.2	94.1%	34	1
PSYC	2.2	79.8%	496	20
SOCI	2.2	79.7%	231	12
HART	1.9	73.0%	37	3
Total	2.8	77.8%	15,276	977

Table 3
Lee College - Baytown Campus
Fall 2003 Grade Distribution Summary
Sorted by Completion Percentage

AREA	AVERAGE GPA	PERCENT COMPLETERS	TOTAL HEADCOUNT	NUMBER SECTIONS
BUSG	4.0	100.0%	1	1
CJSA	4.0	100.0%	1	1
ITNW	2.7	100.0%	7	1
MRKG	4.0	100.0%	1	1
AIRP	3.6	95.5%	88	9
GEOG	2.2	94.1%	34	1
ITSW	2.4	94.1%	17	2
LGLA	3.4	93.6%	141	10
VNSG	2.7	93.0%	473	14
EDUC	3.4	91.9%	86	5
CTEC	3.1	91.7%	24	1
MUEN	3.9	89.5%	86	15
TECA	3.4	89.3%	197	14
POFT	3.0	89.1%	396	30
RNSG	2.5	88.7%	953	51
PHYS	3.0	87.8%	90	6
COSC	2.8	86.4%	273	15
POFI	3.1	86.2%	195	11
DFTG	2.3	85.3%	109	10
ITSC	2.9	85.3%	373	20
SPNL	3.3	85.2%	61	3
PFPB	3.4	84.7%	98	10
ACNT	2.9	84.2%	177	11
MUSI	2.7	83.1%	248	21
CRIJ	3.1	82.5%	154	8
CHEM	3.1	82.2%	101	7
ANTH	2.6	81.8%	11	1
NDTE	4.0	81.8%	11	1
BCIS	3.0	81.0%	42	2
INTC	3.0	80.9%	251	15
MRMT	3.6	80.0%	15	3
PSYC	2.2	79.8%	496	20
SOCI	2.2	79.7%	231	12
ITCC	3.3	79.5%	44	3
MCHN	3.5	79.4%	63	8
PTAC	3.2	79.4%	457	23
SPCH	2.8	79.2%	571	27
KINE	3.2	79.0%	796	71
MUAP	3.5	78.8%	118	61
ACCT	2.6	78.3%	143	7
SCIT	2.9	78.1%	64	3
CPMT	3.0	77.6%	170	11
DRAM	3.5	77.3%	181	11
GOVT	2.4	77.0%	557	19
TECM	3.1	76.9%	182	5
WLDG	3.5	76.3%	232	21
ELPT	3.3	75.8%	285	18
BMGT	2.9	75.6%	127	8
PHIL	2.4	74.7%	75	4
ARCH	3.0	74.6%	67	5
ENGL	2.3	74.3%	1,220	70
BUSI	2.5	74.1%	174	8
HITT	3.0	74.1%	290	19
ARTC	3.0	73.7%	19	1
DAAC	3.4	73.0%	152	13
HART	1.9	73.0%	37	3
HUMA	2.7	72.7%	326	18
ARTS	3.4	71.1%	249	31
HIST	2.3	70.2%	715	28
PHED	3.2	69.3%	407	19
BIOL	2.5	68.7%	834	33
CSME	3.2	67.7%	266	31
HRPO	2.9	67.5%	40	2
SPAN	3.3	67.0%	97	7
COMM	2.4	66.7%	45	7
ECON	2.7	65.7%	99	5
ENVR	2.8	62.1%	58	3
MATH	2.4	61.5%	382	23
IMED	4.0	58.3%	12	1
ITSE	2.4	56.4%	55	3
GEOL	2.3	46.3%	82	4
EMSP	2.6	45.1%	144	11
Total	2.8	77.8%	15,276	977

Table 4
Lee College - Baytown Campus
Fall Grade Distribution History Comparison

	Completion Percentage	GPA
Fall 2001	81.7%	2.9
Fall 2002	78.3%	2.8
Fall 2003	77.8%	2.8

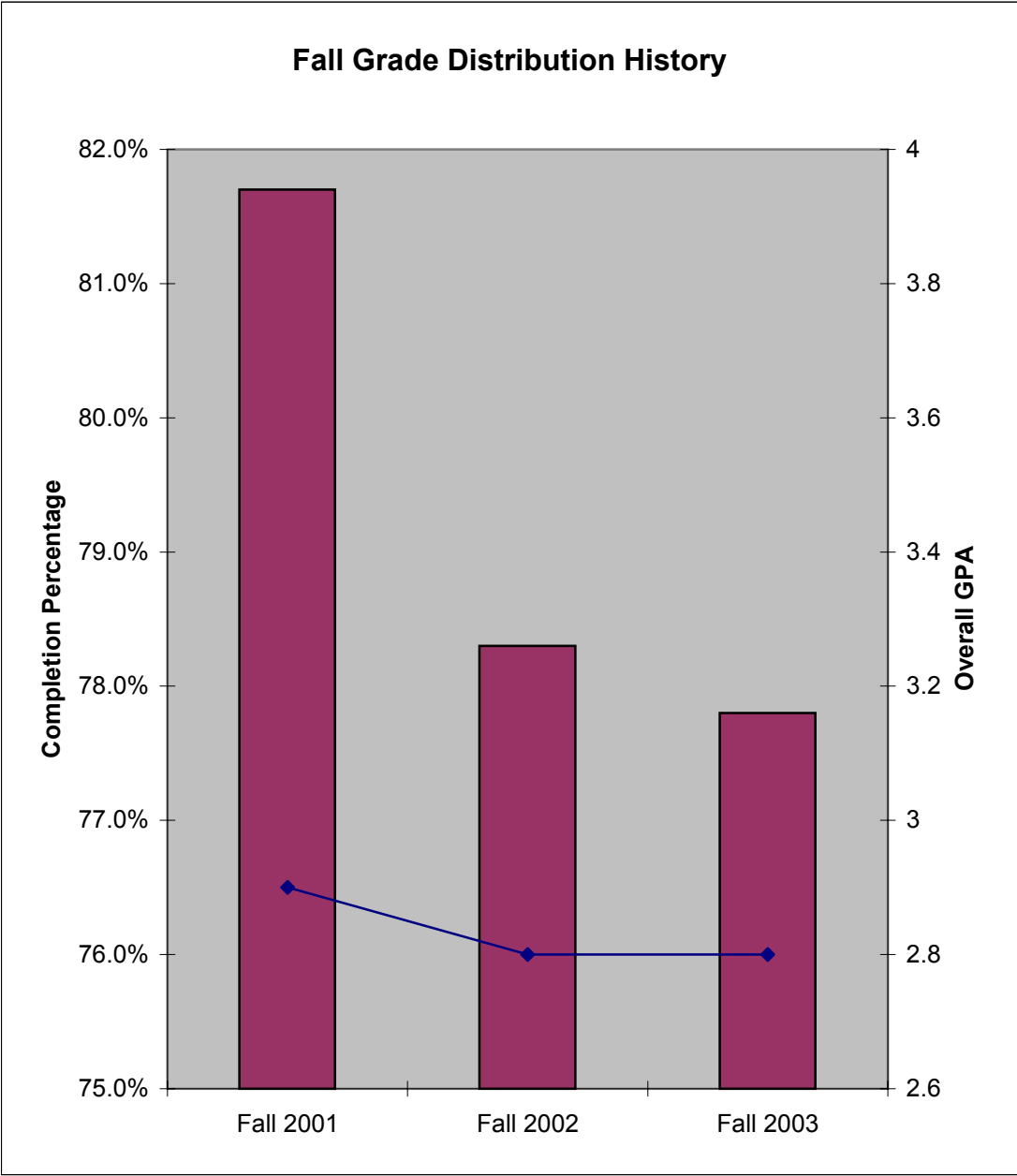


Table 5

**Lee College - Baytown Campus
Fall 2003 Grade Distribution Summary
Developmental Education Courses**

AREA	PERCENT COMPLETERS	TOTAL HEADCOUNT	NUMBER SECTIONS
COSS	77.0%	126	8
ENGL	74.3%	183	13
ESOL	100.0%	25	2
MATH	65.7%	994	74
READ	73.3%	258	12
TOTAL	69.4%	1,586	109

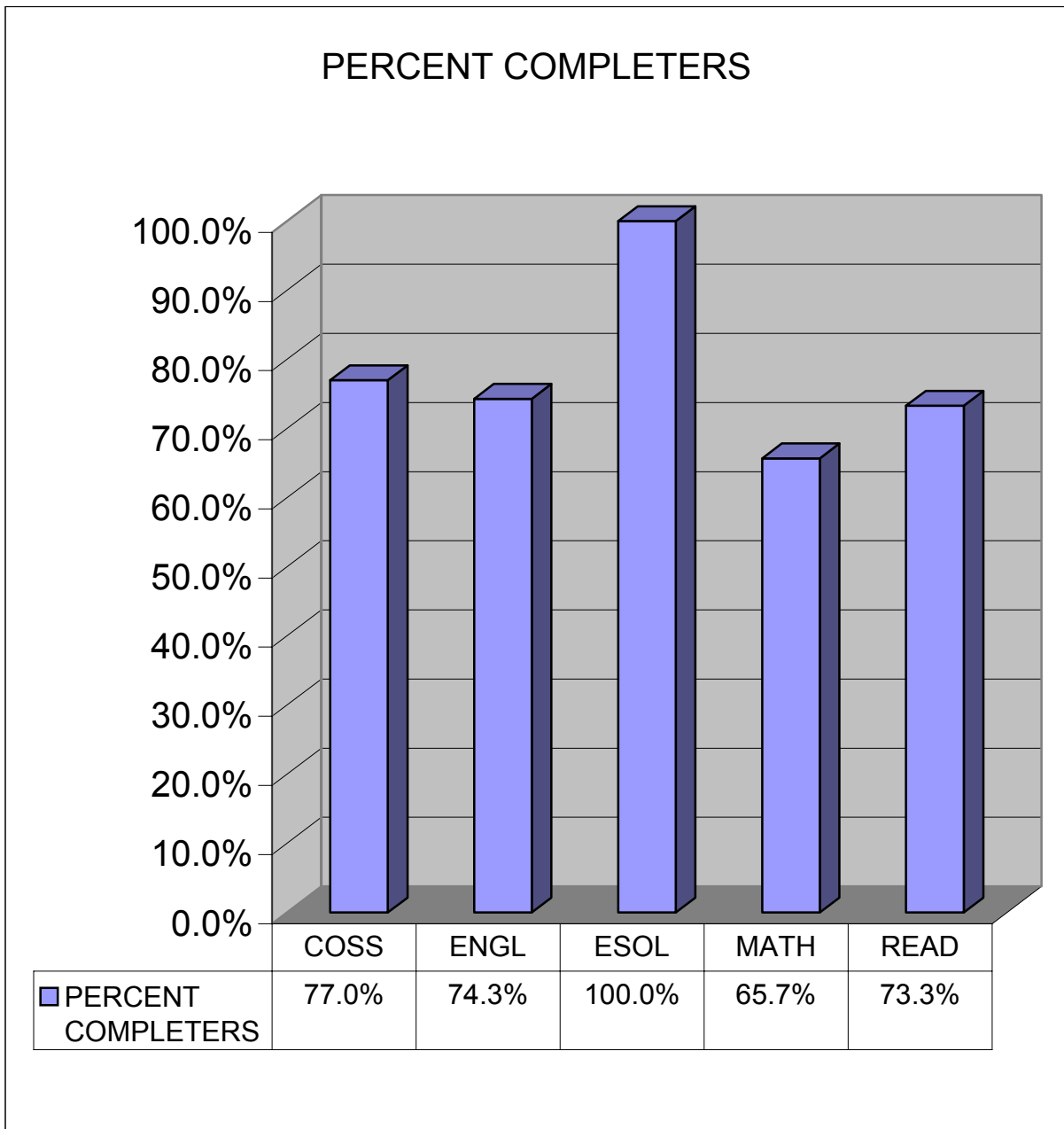


Table 6

Lee College - HC/LC

Fall 2003 Grade Distribution Summary

Sorted by Area

AREA	AVERAGE GPA	PERCENT COMPLETERS	TOTAL HEADCOUNT	NUMBER SECTIONS
ABDR	4.0	95.8%	48	4
ACCT	3.6	94.4%	72	3
ARTC	3.8	93.8%	16	1
ARTS	3.3	94.1%	68	3
AUMT	2.8	89.7%	58	3
BIOL	3.3	94.0%	50	3
BMGT	3.2	94.4%	71	4
BUSI	3.2	97.7%	44	2
CETT	3.6	100.0%	42	2
COSC	3.7	94.6%	56	3
CPMT	3.7	98.2%	170	8
CVOP	3.7	100.0%	217	14
DEMR	3.9	97.5%	40	2
DLBT	3.5	92.1%	63	8
ECON	3.1	98.5%	66	3
ENGL	3.1	94.8%	212	13
GEOL	3.4	93.5%	62	3
GOVT	3.9	93.2%	103	5
HALT	3.7	97.4%	116	6
HART	3.3	98.4%	63	3
HIST	2.9	87.4%	127	7
HUMA	4.0	96.0%	25	1
ITNW	3.1	100.0%	21	1
ITSC	3.1	97.5%	40	2
ITSE	3.7	97.0%	67	4
ITSW	3.8	95.7%	47	3
MATH	2.7	87.0%	69	5
MCHN	3.3	100.0%	6	2
MUSI	3.6	98.2%	55	3
POFT	3.0	93.8%	48	3
PSYC	3.5	92.9%	70	4
SOCI	3.6	94.4%	107	5
SPAN	3.0	76.4%	55	3
SPCH	4.0	93.9%	115	6
TECM	2.7	100.0%	14	1
WLDG	2.7	96.9%	64	3
Total	3.4	94.9%	2,567	146

Table 7

Lee College - HC/LC

Fall 2003 Grade Distribution Summary

Sorted by Average GPA

AREA	AVERAGE GPA	PERCENT COMPLETERS	TOTAL HEADCOUNT	NUMBER SECTIONS
ABDR	4.0	95.8%	48	4
HUMA	4.0	96.0%	25	1
SPCH	4.0	93.9%	115	6
DEMR	3.9	97.5%	40	2
GOVT	3.9	93.2%	103	5
ARTC	3.8	93.8%	16	1
ITSW	3.8	95.7%	47	3
COSC	3.7	94.6%	56	3
CPMT	3.7	98.2%	170	8
CVOP	3.7	100.0%	217	14
HALT	3.7	97.4%	116	6
ITSE	3.7	97.0%	67	4
ACCT	3.6	94.4%	72	3
CETT	3.6	100.0%	42	2
MUSI	3.6	98.2%	55	3
SOCI	3.6	94.4%	107	5
DLBT	3.5	92.1%	63	8
PSYC	3.5	92.9%	70	4
GEOL	3.4	93.5%	62	3
ARTS	3.3	94.1%	68	3
BIOL	3.3	94.0%	50	3
HART	3.3	98.4%	63	3
MCHN	3.3	100.0%	6	2
BMGT	3.2	94.4%	71	4
BUSI	3.2	97.7%	44	2
ECON	3.1	98.5%	66	3
ENGL	3.1	94.8%	212	13
ITNW	3.1	100.0%	21	1
ITSC	3.1	97.5%	40	2
POFT	3.0	93.8%	48	3
SPAN	3.0	76.4%	55	3
HIST	2.9	87.4%	127	7
AUMT	2.8	89.7%	58	3
MATH	2.7	87.0%	69	5
TECM	2.7	100.0%	14	1
WLDG	2.7	96.9%	64	3
Total	3.4	94.9%	2,567	146

Table 8

Lee College - HC/LC

Fall 2003 Grade Distribution Summary

Sorted by Completion Percentage

AREA	AVERAGE GPA	PERCENT COMPLETERS	TOTAL HEADCOUNT	NUMBER SECTIONS
CETT	3.6	100.0%	42	2
CVOP	3.7	100.0%	217	14
ITNW	3.1	100.0%	21	1
MCHN	3.3	100.0%	6	2
TECM	2.7	100.0%	14	1
ECON	3.1	98.5%	66	3
HART	3.3	98.4%	63	3
CPMT	3.7	98.2%	170	8
MUSI	3.6	98.2%	55	3
BUSI	3.2	97.7%	44	2
DEMR	3.9	97.5%	40	2
ITSC	3.1	97.5%	40	2
HALT	3.7	97.4%	116	6
ITSE	3.7	97.0%	67	4
WLDG	2.7	96.9%	64	3
HUMA	4.0	96.0%	25	1
ABDR	4.0	95.8%	48	4
ITSW	3.8	95.7%	47	3
ENGL	3.1	94.8%	212	13
COSC	3.7	94.6%	56	3
ACCT	3.6	94.4%	72	3
BMGT	3.2	94.4%	71	4
SOCI	3.6	94.4%	107	5
ARTS	3.3	94.1%	68	3
BIOL	3.3	94.0%	50	3
SPCH	4.0	93.9%	115	6
ARTC	3.8	93.8%	16	1
POFT	3.0	93.8%	48	3
GEOL	3.4	93.5%	62	3
GOVT	3.9	93.2%	103	5
PSYC	3.5	92.9%	70	4
DLBT	3.5	92.1%	63	8
AUMT	2.8	89.7%	58	3
HIST	2.9	87.4%	127	7
MATH	2.7	87.0%	69	5
SPAN	3.0	76.4%	55	3
Total	3.4	94.9%	2,567	146

Table 9
Lee College - HC/LC
Fall Grade Distribution History Comparison

	Completion Percentage	GPA
Fall 2001	95.0%	3.3
Fall 2002	95.0%	3.3
Fall 2003	94.9%	3.4

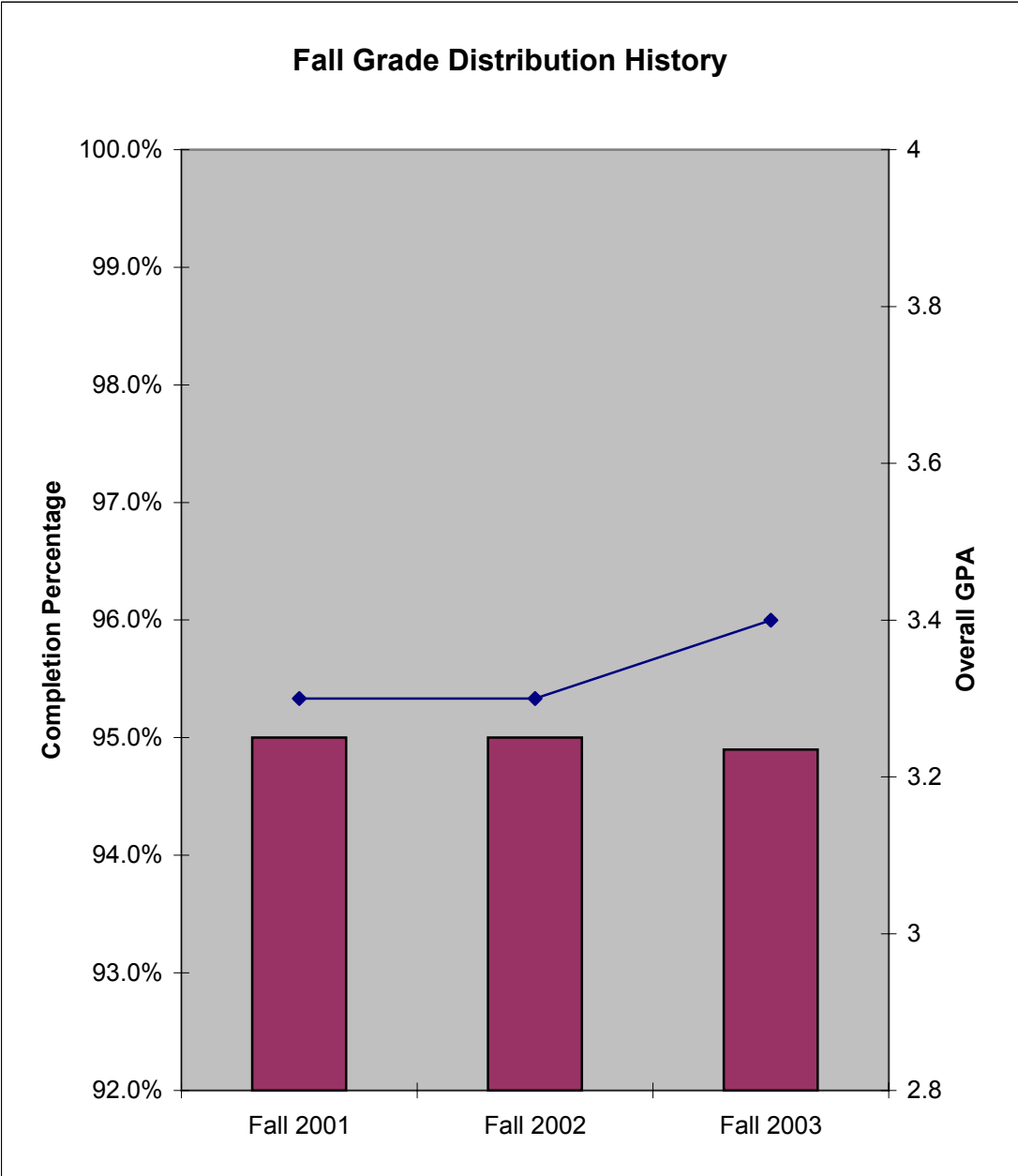


Table 10
Lee College - HC/LC
Fall 2003 Grade Distribution Summary
Developmental Education Courses

AREA	PERCENT COMPLETERS	TOTAL HEADCOUNT	NUMBER SECTIONS
ENGL	91.7%	24	6
MATH	90.3%	206	25
READ	100.0%	10	5
TOTAL	90.8%	240	36

