

**Lee**



**College**

Office of Institutional Research

**Grade Distribution Report**  
**Spring 2003**

Prepared:  
August, 2003

# Spring 2003 Grade Distribution Report

The Spring 2003 Grade Distribution Report contains GPA and Completion Percentage data reported by Subject Area. The Spring 2003 data are compared with Spring 2002 and Spring 2001.

The data in this report are summarized from detailed class grade reports produced by the Office of Institutional research. These detailed reports are provided to the President, Deans, and Division Chairs. Faculty members may request detailed information from the Chair or from the Office of Institutional Research.

## Highlights of the Report

- ⇒ Overall GPA for the Baytown Campus (all students excluding HC/LC) has remained 2.9 for the last three Spring semesters
- ⇒ Overall percentage of students completing non-developmental classes for the Baytown Campus was 75.9% for Spring 2003, down 1.9 percentage points from Spring 2002 (77.8%), but up by 1.5 percentage points from Spring 2001 (74.4%).
- ⇒ Overall percentage of students completing developmental classes for the Baytown campus was 63.8%.
- ⇒ Overall GPA for HC/LC was 3.4, unchanged from Spring 2002, and up from Spring 2001, when it was 3.3.
- ⇒ Overall percentage of students completing non-developmental classes for the HC/LC campus was 94.7%, down by 1.1 percentage points from Spring 2002 (95.8%), but up by 0.3 percentage points from Spring 2001 (94.4%).
- ⇒ Overall percentage of students completing developmental classes for the HC/LC campus was 93.4%.

## Table Guide

| <b>Table</b> | <b>Contents</b>                                       | <b>Site</b> |
|--------------|-------------------------------------------------------|-------------|
| Table 1      | Area Grade Summary By Subject Area                    | Baytown     |
| Table 2      | Area Grade Summary By GPA                             | Baytown     |
| Table 3      | Area Grade Summary By Completion Percentage           | Baytown     |
| Table 4      | 3 Year History Chart - GPA and Completion Percentage  | Baytown     |
| Table 5      | 3 Year Comparison of GPA By Area                      | Baytown     |
| Table 6      | 3 Year Comparison of Completion Percentage By Area    | Baytown     |
| Table 7      | Developmental Education Completion Percentage By Area | Baytown     |
| Table 8      | Area Grade Summary By Subject Area                    | Huntsville  |
| Table 9      | Area Grade Summary By GPA                             | Huntsville  |
| Table 10     | Area Grade Summary By Completion Percentage           | Huntsville  |
| Table 11     | 3 Year History Chart - GPA and Completion Percentage  | Huntsville  |
| Table 12     | 3 Year Comparison of GPA By Area                      | Huntsville  |
| Table 13     | 3 Year Comparison of Completion Percentage By Area    | Huntsville  |
| Table 14     | Developmental Education Completion Percentage By Area | Huntsville  |

**Table 1**  
**Lee College - Baytown Campus**  
**Spring 2003 Grade Distribution Summary**  
**Sorted by Area**

| AREA               | AVERAGE GPA | PERCENT COMPLETERS | TOTAL HEADCOUNT | NUMBER SECTIONS |
|--------------------|-------------|--------------------|-----------------|-----------------|
| ACCT               | 2.3         | 72.0%              | 132             | 7               |
| ACNT               | 3.0         | 77.6%              | 143             | 12              |
| AIRP               | 3.7         | 87.0%              | 92              | 9               |
| ANTH               | 2.3         | 81.3%              | 16              | 1               |
| ARCH               | 2.7         | 76.0%              | 50              | 5               |
| ARTS               | 3.2         | 72.8%              | 206             | 39              |
| BIOL               | 2.6         | 72.6%              | 747             | 32              |
| BMTG               | 2.9         | 72.4%              | 98              | 7               |
| BUSG               | 3.2         | 95.5%              | 22              | 1               |
| BUSI               | 3.0         | 72.2%              | 180             | 12              |
| CHEM               | 3.0         | 74.7%              | 91              | 8               |
| CJSA               | 4.0         | 60.0%              | 5               | 1               |
| CNBT               | 2.8         | 87.0%              | 23              | 2               |
| COMM               | 3.3         | 78.3%              | 60              | 11              |
| COSC               | 3.1         | 78.3%              | 212             | 13              |
| CPMT               | 3.0         | 89.0%              | 155             | 9               |
| CRIJ               | 3.0         | 71.3%              | 150             | 10              |
| CSME               | 2.9         | 67.3%              | 150             | 20              |
| DAAC               | 3.0         | 71.3%              | 101             | 11              |
| DFTG               | 2.8         | 72.4%              | 152             | 14              |
| DRAM               | 3.6         | 79.1%              | 115             | 10              |
| ECON               | 2.5         | 66.4%              | 116             | 8               |
| EDUC               | 3.3         | 84.0%              | 75              | 4               |
| ELPT               | 3.3         | 73.5%              | 238             | 15              |
| EMSP               | 2.9         | 45.7%              | 116             | 14              |
| ENGL               | 2.3         | 74.2%              | 1010            | 67              |
| ENVR               | 3.4         | 74.0%              | 50              | 3               |
| GEOG               | 2.5         | 86.7%              | 30              | 1               |
| GEOI               | 2.1         | 66.3%              | 80              | 4               |
| GOVT               | 2.5         | 77.4%              | 486             | 21              |
| GRPH               | 3.2         | 77.3%              | 22              | 3               |
| HART               | 3.1         | 75.0%              | 52              | 7               |
| HIST               | 2.4         | 68.9%              | 547             | 27              |
| HITT               | 3.1         | 74.1%              | 278             | 18              |
| HRPO               | 3.0         | 87.5%              | 24              | 2               |
| HUMA               | 2.6         | 81.6%              | 261             | 17              |
| INTC               | 3.1         | 83.5%              | 170             | 13              |
| ITCC               | 3.5         | 80.0%              | 40              | 4               |
| ITNW               | 0.0         | 0.0%               | 1               | 1               |
| ITSC               | 3.0         | 77.2%              | 355             | 21              |
| ITSE               | 2.9         | 55.1%              | 69              | 6               |
| ITSW               | 3.3         | 80.8%              | 26              | 4               |
| KINE               | 3.6         | 75.3%              | 655             | 60              |
| LGIA               | 3.3         | 77.2%              | 162             | 9               |
| MATH               | 2.3         | 57.7%              | 355             | 28              |
| MCHN               | 3.9         | 81.0%              | 42              | 3               |
| MRKG               | 3.8         | 90.2%              | 41              | 2               |
| MRMT               | 3.2         | 73.3%              | 15              | 3               |
| MUAP               | 3.5         | 78.0%              | 118             | 65              |
| MUEN               | 3.8         | 88.2%              | 68              | 15              |
| MUSI               | 3.1         | 80.0%              | 155             | 15              |
| NDTE               | 4.0         | 62.5%              | 8               | 1               |
| OSHT               | 3.2         | 91.3%              | 23              | 2               |
| PFPB               | 3.1         | 76.1%              | 92              | 6               |
| PHED               | 3.3         | 87.3%              | 134             | 12              |
| PHIL               | 2.3         | 72.1%              | 61              | 4               |
| PHYS               | 3.1         | 85.9%              | 64              | 5               |
| POFI               | 3.1         | 79.3%              | 188             | 13              |
| POFT               | 3.1         | 79.4%              | 427             | 34              |
| PSYC               | 2.4         | 75.8%              | 422             | 16              |
| PTAC               | 3.0         | 76.9%              | 498             | 24              |
| RNSG               | 2.4         | 74.5%              | 556             | 25              |
| SCIT               | 2.6         | 74.7%              | 79              | 4               |
| SGNL               | 3.2         | 83.3%              | 30              | 2               |
| SOCI               | 2.1         | 83.2%              | 214             | 13              |
| SPAN               | 3.3         | 62.9%              | 89              | 7               |
| SPCH               | 2.6         | 76.3%              | 405             | 22              |
| SPNL               | 3.9         | 89.3%              | 28              | 1               |
| TECA               | 3.5         | 91.5%              | 176             | 13              |
| TECM               | 3.1         | 77.6%              | 143             | 5               |
| VNSG               | 2.8         | 96.4%              | 279             | 13              |
| WLDG               | 3.3         | 80.9%              | 235             | 27              |
| <b>GRAND TOTAL</b> | <b>2.9</b>  | <b>75.9%</b>       | <b>12,708</b>   | <b>943</b>      |

**Table 2**  
**Lee College - Baytown Campus**  
**Spring 2003 Grade Distribution Summary**  
**Sorted by Average GPA**

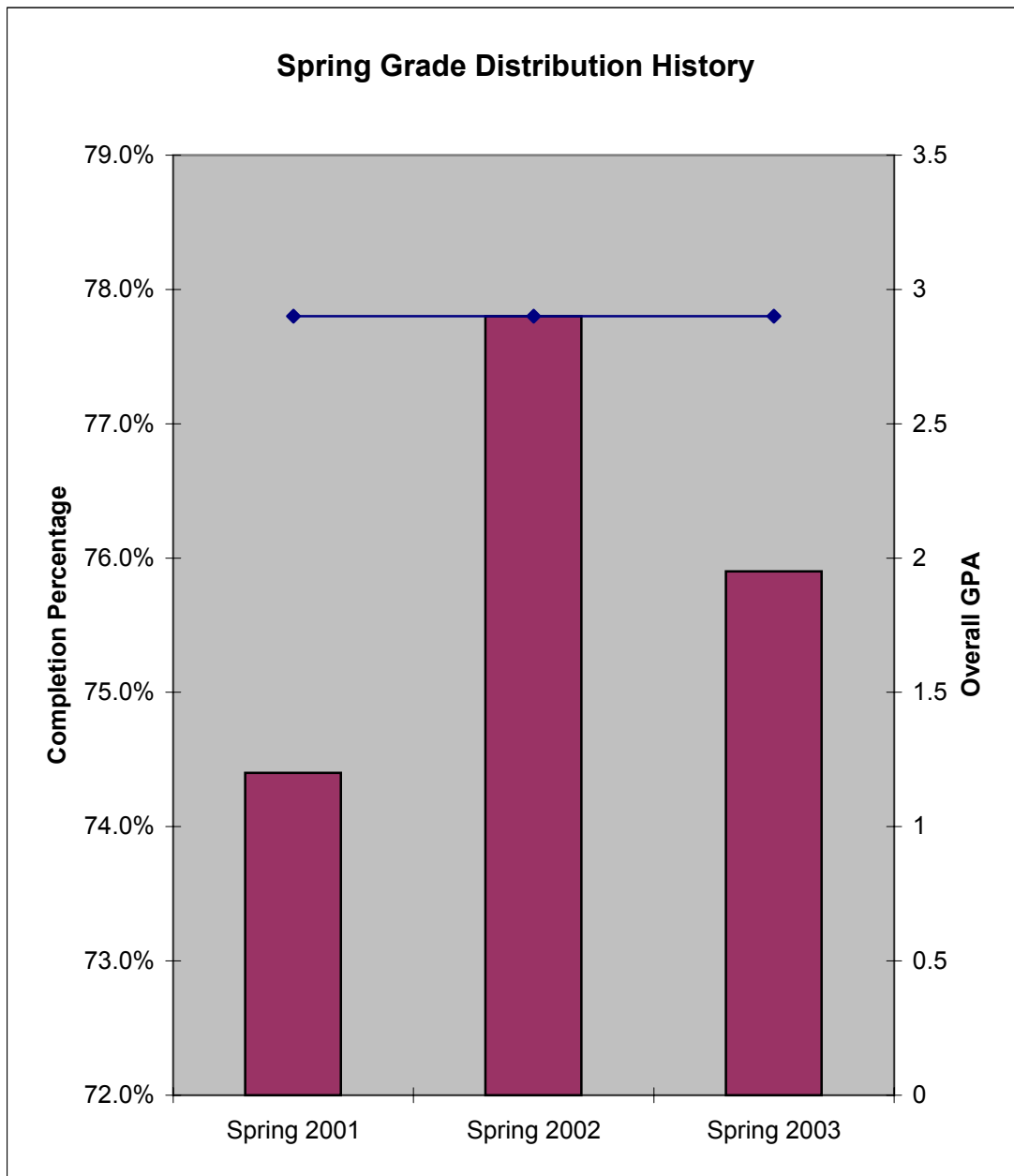
| AREA               | AVERAGE GPA | PERCENT COMPLETERS | TOTAL HEADCOUNT | NUMBER SECTIONS |
|--------------------|-------------|--------------------|-----------------|-----------------|
| CJSA               | 4.0         | 60.0%              | 5               | 1               |
| NDTE               | 4.0         | 62.5%              | 8               | 1               |
| MCHN               | 3.9         | 81.0%              | 42              | 3               |
| SPNL               | 3.9         | 89.3%              | 28              | 1               |
| MRKG               | 3.8         | 90.2%              | 41              | 2               |
| MUEN               | 3.8         | 88.2%              | 68              | 15              |
| AIRP               | 3.7         | 87.0%              | 92              | 9               |
| DRAM               | 3.6         | 79.1%              | 115             | 10              |
| KINE               | 3.6         | 75.3%              | 655             | 60              |
| ITCC               | 3.5         | 80.0%              | 40              | 4               |
| MUAP               | 3.5         | 78.0%              | 118             | 65              |
| TECA               | 3.5         | 91.5%              | 176             | 13              |
| ENVR               | 3.4         | 74.0%              | 50              | 3               |
| COMM               | 3.3         | 78.3%              | 60              | 11              |
| EDUC               | 3.3         | 84.0%              | 75              | 4               |
| ELPT               | 3.3         | 73.5%              | 238             | 15              |
| ITSW               | 3.3         | 80.8%              | 26              | 4               |
| LGLA               | 3.3         | 77.2%              | 162             | 9               |
| PHED               | 3.3         | 87.3%              | 134             | 12              |
| SPAN               | 3.3         | 62.9%              | 89              | 7               |
| WLDG               | 3.3         | 80.9%              | 235             | 27              |
| ARTS               | 3.2         | 72.8%              | 206             | 39              |
| BUSG               | 3.2         | 95.5%              | 22              | 1               |
| GRPH               | 3.2         | 77.3%              | 22              | 3               |
| MRMT               | 3.2         | 73.3%              | 15              | 3               |
| OSHT               | 3.2         | 91.3%              | 23              | 2               |
| SGNL               | 3.2         | 83.3%              | 30              | 2               |
| COSC               | 3.1         | 78.3%              | 212             | 13              |
| HART               | 3.1         | 75.0%              | 52              | 7               |
| HITT               | 3.1         | 74.1%              | 278             | 18              |
| INTC               | 3.1         | 83.5%              | 170             | 13              |
| MUSI               | 3.1         | 80.0%              | 155             | 15              |
| PFPB               | 3.1         | 76.1%              | 92              | 6               |
| PHYS               | 3.1         | 85.9%              | 64              | 5               |
| POFI               | 3.1         | 79.3%              | 188             | 13              |
| POFT               | 3.1         | 79.4%              | 427             | 34              |
| TECM               | 3.1         | 77.6%              | 143             | 5               |
| ACNT               | 3.0         | 77.6%              | 143             | 12              |
| BUSI               | 3.0         | 72.2%              | 180             | 12              |
| CHEM               | 3.0         | 74.7%              | 91              | 8               |
| CPMT               | 3.0         | 89.0%              | 155             | 9               |
| CRIJ               | 3.0         | 71.3%              | 150             | 10              |
| DAAC               | 3.0         | 71.3%              | 101             | 11              |
| HRPO               | 3.0         | 87.5%              | 24              | 2               |
| ITSC               | 3.0         | 77.2%              | 355             | 21              |
| PTAC               | 3.0         | 76.9%              | 498             | 24              |
| BMTG               | 2.9         | 72.4%              | 98              | 7               |
| CSME               | 2.9         | 67.3%              | 150             | 20              |
| EMSP               | 2.9         | 45.7%              | 116             | 14              |
| ITSE               | 2.9         | 55.1%              | 69              | 6               |
| CNBT               | 2.8         | 87.0%              | 23              | 2               |
| DFTG               | 2.8         | 72.4%              | 152             | 14              |
| VNSG               | 2.8         | 96.4%              | 279             | 13              |
| ARCH               | 2.7         | 76.0%              | 50              | 5               |
| BIOL               | 2.6         | 72.6%              | 747             | 32              |
| HUMA               | 2.6         | 81.6%              | 261             | 17              |
| SCIT               | 2.6         | 74.7%              | 79              | 4               |
| SPCH               | 2.6         | 76.3%              | 405             | 22              |
| ECON               | 2.5         | 66.4%              | 116             | 8               |
| GEOG               | 2.5         | 86.7%              | 30              | 1               |
| GOVT               | 2.5         | 77.4%              | 486             | 21              |
| HIST               | 2.4         | 68.9%              | 547             | 27              |
| PSYC               | 2.4         | 75.8%              | 422             | 16              |
| RNSG               | 2.4         | 74.5%              | 556             | 25              |
| ACCT               | 2.3         | 72.0%              | 132             | 7               |
| ANTH               | 2.3         | 81.3%              | 16              | 1               |
| ENGL               | 2.3         | 74.2%              | 1010            | 67              |
| MATH               | 2.3         | 57.7%              | 355             | 28              |
| PHIL               | 2.3         | 72.1%              | 61              | 4               |
| GEOI               | 2.1         | 66.3%              | 80              | 4               |
| SOCI               | 2.1         | 83.2%              | 214             | 13              |
| ITNW               | 0.0         | 0.0%               | 1               | 1               |
| <b>GRAND TOTAL</b> | <b>2.9</b>  | <b>75.9%</b>       | <b>12,708</b>   | <b>943</b>      |

**Table 3**  
**Lee College - Baytown Campus**  
**Spring 2003 Grade Distribution Summary**  
**Sorted by Completion Percentage**

| AREA               | AVERAGE GPA | PERCENT COMPLETERS | TOTAL HEADCOUNT | NUMBER SECTIONS |
|--------------------|-------------|--------------------|-----------------|-----------------|
| VNSG               | 2.8         | 96.4%              | 279             | 13              |
| BUSG               | 3.2         | 95.5%              | 22              | 1               |
| TECA               | 3.5         | 91.5%              | 176             | 13              |
| OSHT               | 3.2         | 91.3%              | 23              | 2               |
| MRKG               | 3.8         | 90.2%              | 41              | 2               |
| SPNL               | 3.9         | 89.3%              | 28              | 1               |
| CPMT               | 3.0         | 89.0%              | 155             | 9               |
| MUEN               | 3.8         | 88.2%              | 68              | 15              |
| HRPO               | 3.0         | 87.5%              | 24              | 2               |
| PHED               | 3.3         | 87.3%              | 134             | 12              |
| AIRP               | 3.7         | 87.0%              | 92              | 9               |
| CNBT               | 2.8         | 87.0%              | 23              | 2               |
| GEOG               | 2.5         | 86.7%              | 30              | 1               |
| PHYS               | 3.1         | 85.9%              | 64              | 5               |
| EDUC               | 3.3         | 84.0%              | 75              | 4               |
| INTC               | 3.1         | 83.5%              | 170             | 13              |
| SGNL               | 3.2         | 83.3%              | 30              | 2               |
| SOCI               | 2.1         | 83.2%              | 214             | 13              |
| HUMA               | 2.6         | 81.6%              | 261             | 17              |
| ANTH               | 2.3         | 81.3%              | 16              | 1               |
| MCHN               | 3.9         | 81.0%              | 42              | 3               |
| WLDG               | 3.3         | 80.9%              | 235             | 27              |
| ITSW               | 3.3         | 80.8%              | 26              | 4               |
| ITCC               | 3.5         | 80.0%              | 40              | 4               |
| MUSI               | 3.1         | 80.0%              | 155             | 15              |
| POFT               | 3.1         | 79.4%              | 427             | 34              |
| POFI               | 3.1         | 79.3%              | 188             | 13              |
| DRAM               | 3.6         | 79.1%              | 115             | 10              |
| COMM               | 3.3         | 78.3%              | 60              | 11              |
| COSC               | 3.1         | 78.3%              | 212             | 13              |
| MUAP               | 3.5         | 78.0%              | 118             | 65              |
| ACNT               | 3.0         | 77.6%              | 143             | 12              |
| TECM               | 3.1         | 77.6%              | 143             | 5               |
| GOVT               | 2.5         | 77.4%              | 486             | 21              |
| GRPH               | 3.2         | 77.3%              | 22              | 3               |
| ITSC               | 3.0         | 77.2%              | 355             | 21              |
| LGLA               | 3.3         | 77.2%              | 162             | 9               |
| PTAC               | 3.0         | 76.9%              | 498             | 24              |
| SPCH               | 2.6         | 76.3%              | 405             | 22              |
| PFPB               | 3.1         | 76.1%              | 92              | 6               |
| ARCH               | 2.7         | 76.0%              | 50              | 5               |
| PSYC               | 2.4         | 75.8%              | 422             | 16              |
| KINE               | 3.6         | 75.3%              | 655             | 60              |
| HART               | 3.1         | 75.0%              | 52              | 7               |
| CHEM               | 3.0         | 74.7%              | 91              | 8               |
| SCIT               | 2.6         | 74.7%              | 79              | 4               |
| RNSG               | 2.4         | 74.5%              | 556             | 25              |
| ENGL               | 2.3         | 74.2%              | 1010            | 67              |
| HITT               | 3.1         | 74.1%              | 278             | 18              |
| ENVR               | 3.4         | 74.0%              | 50              | 3               |
| ELPT               | 3.3         | 73.5%              | 238             | 15              |
| MRMT               | 3.2         | 73.3%              | 15              | 3               |
| ARTS               | 3.2         | 72.8%              | 206             | 39              |
| BIOL               | 2.6         | 72.6%              | 747             | 32              |
| BMTG               | 2.9         | 72.4%              | 98              | 7               |
| DFTG               | 2.8         | 72.4%              | 152             | 14              |
| BUSI               | 3.0         | 72.2%              | 180             | 12              |
| PHIL               | 2.3         | 72.1%              | 61              | 4               |
| ACCT               | 2.3         | 72.0%              | 132             | 7               |
| CRJ                | 3.0         | 71.3%              | 150             | 10              |
| DAAC               | 3.0         | 71.3%              | 101             | 11              |
| HIST               | 2.4         | 68.9%              | 547             | 27              |
| CSME               | 2.9         | 67.3%              | 150             | 20              |
| ECON               | 2.5         | 66.4%              | 116             | 8               |
| GEOL               | 2.1         | 66.3%              | 80              | 4               |
| SPAN               | 3.3         | 62.9%              | 89              | 7               |
| NDTE               | 4.0         | 62.5%              | 8               | 1               |
| CJSA               | 4.0         | 60.0%              | 5               | 1               |
| MATH               | 2.3         | 57.7%              | 355             | 28              |
| ITSE               | 2.9         | 55.1%              | 69              | 6               |
| EMSP               | 2.9         | 45.7%              | 116             | 14              |
| ITNW               | 0.0         | 0.0%               | 1               | 1               |
| <b>GRAND TOTAL</b> | <b>2.9</b>  | <b>75.9%</b>       | <b>12,708</b>   | <b>943</b>      |

**Table 4**  
**Lee College - Baytown Campus**  
**Spring Grade Distribution History Comparison**

|                    | <b>Completion Percentage</b> | <b>GPA</b> |
|--------------------|------------------------------|------------|
| <b>Spring 2001</b> | 74.4%                        | 2.9        |
| <b>Spring 2002</b> | 77.8%                        | 2.9        |
| <b>Spring 2003</b> | 75.9%                        | 2.9        |



**Table 5**  
**Lee College - Baytown Campus**  
**Spring 2003 Grade Distribution Summary**  
**Spring GPA History**

| Area               | Spring 2003<br>Average GPA | Spring 2002<br>Average GPA | 1 Yr. Change | Spring 2001<br>Average GPA | 2 Yr. Change |
|--------------------|----------------------------|----------------------------|--------------|----------------------------|--------------|
| ACCT               | 2.3                        | 2.8                        | -0.5         | 2.8                        | -0.5         |
| ACNT               | 3.0                        | 3.2                        | -0.2         | 2.7                        | 0.3          |
| AIRP               | 3.7                        | 3.4                        | 0.3          | 3.2                        | 0.5          |
| ANTH               | 2.3                        | 2.0                        | 0.3          | 3.0                        | -0.7         |
| ARCH               | 2.7                        | 2.8                        | -0.1         |                            | 2.7          |
| ARTS               | 3.2                        | 3.2                        | 0.0          | 3.3                        | -0.1         |
| BCIS               |                            | 4.0                        | -4.0         |                            | 0.0          |
| BIBL               |                            | 3.1                        | -3.1         | 2.7                        | -2.7         |
| BIOL               | 2.6                        | 2.8                        | -0.2         | 2.8                        | -0.2         |
| BMTG               | 2.9                        | 3.2                        | -0.3         | 3.5                        | -0.6         |
| BUSG               | 3.2                        | 2.6                        | 0.6          | 2.8                        | 0.5          |
| BUSI               | 3.0                        | 2.8                        | 0.2          | 2.9                        | 0.2          |
| CETT               |                            | 3.1                        | -3.1         | 3.3                        | -3.3         |
| CHEM               | 3.0                        | 3.3                        | -0.3         | 3.1                        | 0.0          |
| CJSA               | 4.0                        |                            | 4.0          | 3.7                        | 0.3          |
| CNBT               | 2.8                        |                            | 2.8          |                            | 2.8          |
| COMM               | 3.3                        | 3.2                        | 0.1          | 3.0                        | 0.3          |
| COSC               | 3.1                        | 3.2                        | -0.1         | 2.9                        | 0.2          |
| CPMT               | 3.0                        | 3.2                        | -0.2         | 3.2                        | -0.2         |
| CRJ                | 3.0                        | 3.2                        | -0.2         | 2.7                        | 0.4          |
| CSME               | 2.9                        | 2.5                        | 0.4          | 2.7                        | 0.2          |
| DAAC               | 3.0                        | 3.4                        | -0.4         | 3.0                        | 0.0          |
| DFTG               | 2.8                        | 2.7                        | 0.1          | 2.6                        | 0.2          |
| DRAM               | 3.6                        | 3.4                        | 0.2          | 3.1                        | 0.5          |
| ECON               | 2.5                        | 2.9                        | -0.4         | 2.8                        | -0.3         |
| EDUC               | 3.3                        | 3.8                        | -0.5         | 4.0                        | -0.7         |
| ELPT               | 3.3                        | 3.3                        | 0.0          | 3.6                        | -0.3         |
| EMSP               | 2.9                        | 2.8                        | 0.1          | 2.8                        | 0.1          |
| ENGL               | 2.3                        | 2.7                        | -0.4         | 2.7                        | -0.4         |
| ENVR               | 3.4                        | 3.1                        | 0.3          |                            | 3.4          |
| ESCI               |                            |                            | 0.0          | 3.0                        | -3.0         |
| FREN               |                            | 3.5                        | -3.5         | 4.0                        | -4.0         |
| GEOG               | 2.5                        | 2.3                        | 0.2          | 2.3                        | 0.2          |
| GEO                | 2.1                        | 2.4                        | -0.3         | 2.2                        | -0.1         |
| GOVT               | 2.5                        | 2.6                        | -0.1         | 2.6                        | -0.1         |
| GRPH               | 3.2                        | 2.9                        | 0.3          | 2.7                        | 0.6          |
| HART               | 3.1                        | 2.5                        | 0.6          | 1.1                        | 2.0          |
| HIST               | 2.4                        | 2.5                        | -0.1         | 2.2                        | 0.2          |
| HITT               | 3.1                        | 2.8                        | 0.3          | 3.0                        | 0.1          |
| HRPO               | 3.0                        | 3.2                        | -0.2         | 3.7                        | -0.7         |
| HUMA               | 2.6                        | 2.8                        | -0.2         | 3.0                        | -0.4         |
| INMT               |                            | 4.0                        | -4.0         | 3.9                        | -3.9         |
| INTC               | 3.1                        | 3.3                        | -0.2         | 3.4                        | -0.3         |
| ITCC               | 3.5                        | 3.1                        | 0.4          |                            | 3.5          |
| ITNW               | 0.0                        |                            | 0.0          |                            | 0.0          |
| ITSC               | 3.0                        | 3.1                        | -0.1         | 2.8                        | 0.2          |
| ITSE               | 2.9                        | 2.8                        | 0.1          | 2.7                        | 0.2          |
| ITSW               | 3.3                        | 2.6                        | 0.7          | 3.2                        | 0.1          |
| KINE               | 3.6                        | 3.5                        | 0.1          | 3.4                        | 0.2          |
| LGLA               | 3.3                        | 3.3                        | 0.0          | 3.2                        | 0.1          |
| MATH               | 2.3                        | 2.2                        | 0.1          | 2.4                        | -0.1         |
| MCHN               | 3.9                        | 3.6                        | 0.3          | 3.7                        | 0.2          |
| MRKG               | 3.8                        | 2.6                        | 1.2          | 2.7                        | 1.1          |
| MRMT               | 3.2                        | 3.2                        | 0.0          | 3.1                        | 0.1          |
| MUAP               | 3.5                        | 3.7                        | -0.2         | 3.7                        | -0.2         |
| MUEN               | 3.8                        |                            | 3.8          |                            | 3.8          |
| MUSI               | 3.1                        | 3.0                        | 0.1          | 3.3                        | -0.2         |
| NDTE               | 4.0                        |                            | 4.0          | 3.3                        | 0.7          |
| OSHT               | 3.2                        |                            | 3.2          | 3.3                        | -0.1         |
| PFPB               | 3.1                        | 3.4                        | -0.3         | 3.0                        | 0.1          |
| PHED               | 3.3                        | 2.9                        | 0.4          | 3.5                        | -0.2         |
| PHIL               | 2.3                        | 3.3                        | -1.0         | 2.9                        | -0.6         |
| PHYS               | 3.1                        | 3.2                        | -0.1         | 3.2                        | -0.1         |
| POFI               | 3.1                        | 3.0                        | 0.1          | 2.9                        | 0.2          |
| POFT               | 3.1                        | 3.0                        | 0.1          | 2.9                        | 0.3          |
| PSYC               | 2.4                        | 2.3                        | 0.1          | 2.4                        | 0.0          |
| PTAC               | 3.0                        | 3.0                        | 0.0          | 3.0                        | 0.0          |
| RNSG               | 2.4                        | 2.2                        | 0.2          | 2.6                        | -0.2         |
| SCIT               | 2.6                        |                            | 2.6          | 3.4                        | -0.8         |
| SGNL               | 3.2                        | 2.9                        | 0.3          | 3.3                        | 0.0          |
| SOCI               | 2.1                        | 2.1                        | 0.0          | 2.1                        | 0.0          |
| SPAN               | 3.3                        | 3.3                        | 0.0          | 3.4                        | -0.1         |
| SPCH               | 2.6                        | 3.3                        | -0.7         | 3.2                        | -0.6         |
| SPNL               | 3.9                        | 3.7                        | 0.2          |                            | 3.9          |
| TECA               | 3.5                        |                            | 3.5          |                            | 3.5          |
| TECM               | 3.1                        | 3.3                        | -0.2         | 3.1                        | 0.0          |
| VNSG               | 2.8                        | 3.1                        | -0.3         | 3.1                        | -0.3         |
| WLDG               | 3.3                        | 3.2                        | 0.1          | 2.9                        | 0.4          |
| <b>GRAND TOTAL</b> | <b>2.9</b>                 | <b>2.9</b>                 | <b>0.0</b>   | <b>2.9</b>                 | <b>0.0</b>   |

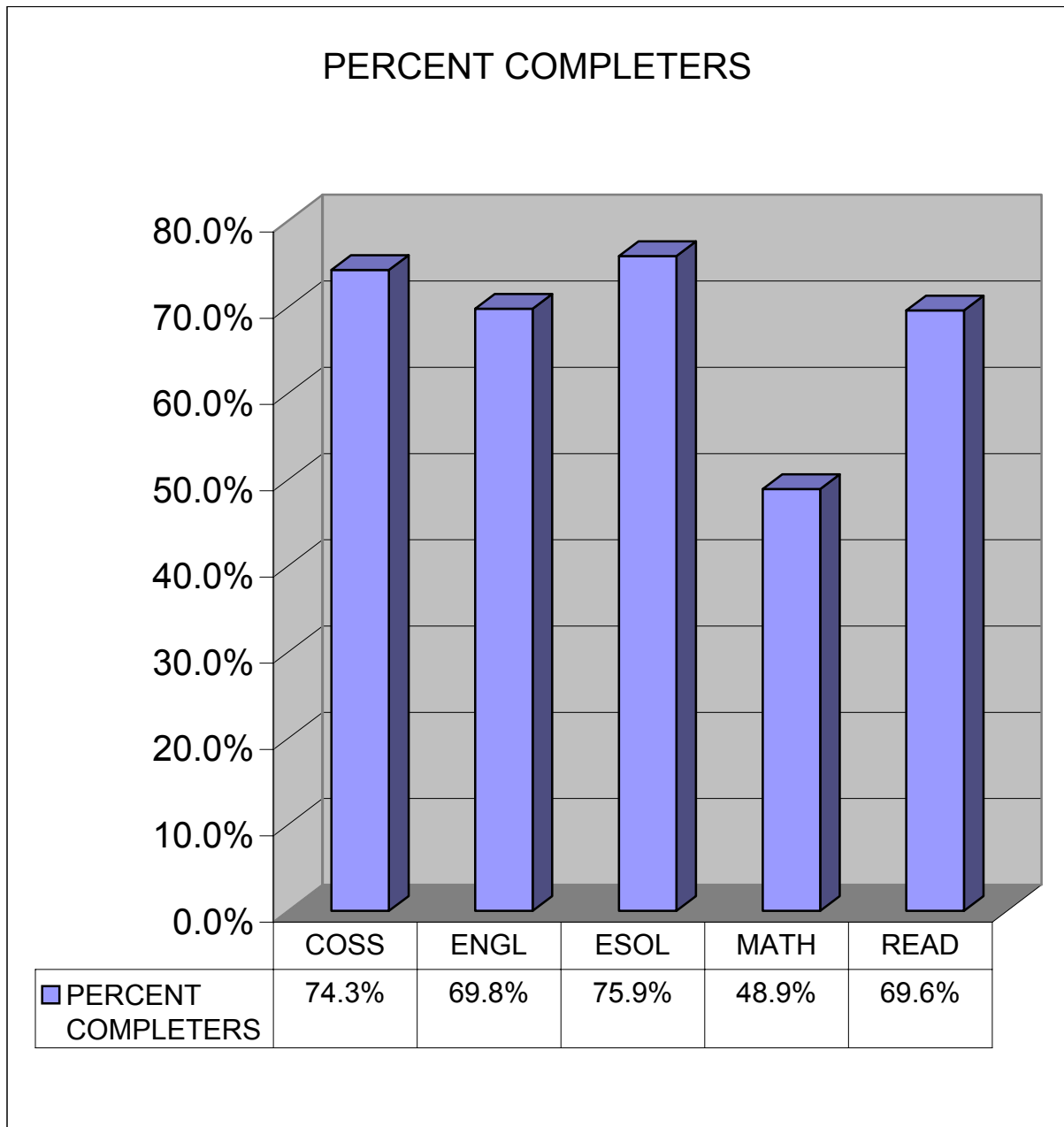
**Table 6**  
**Lee College - Baytown Campus**  
**Spring 2003 Grade Distribution Summary**  
**Spring Completion History**

| Area               | Spring 2003 Completers | Spring 2002 Completers | 1 Yr. Change | Spring 2001 Completers | 2 Yr. Change |
|--------------------|------------------------|------------------------|--------------|------------------------|--------------|
| ACCT               | 72.0%                  | 78.3%                  | -6.3%        | 82.4%                  | -10.4%       |
| ACNT               | 77.6%                  | 83.3%                  | -5.7%        | 86.4%                  | -8.8%        |
| AIRP               | 87.0%                  | 75.7%                  | 11.3%        | 70.2%                  | 16.9%        |
| ANTH               | 81.3%                  | 91.7%                  | -10.4%       | 90.9%                  | -9.6%        |
| ARCH               | 76.0%                  | 51.9%                  | 24.1%        |                        |              |
| ARTS               | 72.8%                  | 72.0%                  | 0.8%         | 77.4%                  | -4.6%        |
| BCIS               |                        | 62.5%                  |              |                        |              |
| BIBL               |                        | 75.0%                  |              | 50.0%                  | -50.0%       |
| BIOL               | 72.6%                  | 74.1%                  | -1.5%        | 69.7%                  | 2.9%         |
| BMTG               | 72.4%                  | 75.0%                  | -2.6%        | 85.4%                  | -13.0%       |
| BUSG               | 95.5%                  | 81.4%                  | 14.1%        | 100.0%                 | -4.5%        |
| BUSI               | 72.2%                  | 85.9%                  | -13.7%       | 73.6%                  | -1.4%        |
| CETT               |                        | 80.5%                  |              | 73.3%                  | -73.3%       |
| CHEM               | 74.7%                  | 65.4%                  | 9.3%         | 69.5%                  | 5.2%         |
| CJSA               | 60.0%                  |                        |              | 100.0%                 | -40.0%       |
| CNBT               | 87.0%                  |                        |              |                        |              |
| COMM               | 78.3%                  | 92.0%                  | -13.7%       | 78.9%                  | -0.5%        |
| COSC               | 78.3%                  | 83.2%                  | -4.9%        | 83.5%                  | -5.2%        |
| CPMT               | 89.0%                  | 91.2%                  | -2.2%        | 79.3%                  | 9.7%         |
| CRJ                | 71.3%                  | 88.3%                  | -17.0%       | 87.8%                  | -16.5%       |
| CSME               | 67.3%                  | 73.3%                  | -6.0%        | 56.1%                  | 11.2%        |
| DAAC               | 71.3%                  | 75.6%                  | -4.3%        | 69.7%                  | 1.6%         |
| DFTG               | 72.4%                  | 78.0%                  | -5.6%        | 61.5%                  | 10.9%        |
| DRAM               | 79.1%                  | 81.5%                  | -2.4%        | 81.4%                  | -2.3%        |
| ECON               | 66.4%                  | 86.8%                  | -20.4%       | 85.5%                  | -19.1%       |
| EDUC               | 84.0%                  | 84.0%                  | 0.0%         | 88.9%                  | -4.9%        |
| ELPT               | 73.5%                  | 81.0%                  | -7.5%        | 71.9%                  | 1.6%         |
| EMSP               | 45.7%                  | 48.1%                  | -2.4%        | 52.2%                  | -6.5%        |
| ENGL               | 74.2%                  | 74.0%                  | 0.2%         | 73.2%                  | 1.0%         |
| ENVR               | 74.0%                  | 77.1%                  | -3.1%        |                        |              |
| ESCI               |                        |                        |              | 69.8%                  | -69.8%       |
| FREN               |                        | 66.7%                  |              | 100.0%                 | -100.0%      |
| GEOG               | 86.7%                  | 85.5%                  | 1.2%         | 80.8%                  | 5.9%         |
| GEOL               | 66.3%                  | 64.7%                  | 1.6%         | 78.3%                  | -12.0%       |
| GOVT               | 77.4%                  | 80.4%                  | -3.0%        | 76.2%                  | 1.2%         |
| GRPH               | 77.3%                  | 81.1%                  | -3.8%        | 79.3%                  | -2.0%        |
| HART               | 75.0%                  | 86.4%                  | -11.4%       | 60.3%                  | 14.7%        |
| HIST               | 68.9%                  | 72.0%                  | -3.1%        | 73.7%                  | -4.8%        |
| HITT               | 74.1%                  | 73.7%                  | 0.4%         | 70.1%                  | 4.0%         |
| HRPO               | 87.5%                  | 80.0%                  | 7.5%         | 92.9%                  | -5.4%        |
| HUMA               | 81.6%                  | 80.3%                  | 1.3%         | 77.1%                  | 4.5%         |
| INMT               |                        | 100.0%                 |              | 93.3%                  | -93.3%       |
| INTC               | 83.5%                  | 75.4%                  | 8.1%         | 74.0%                  | 9.5%         |
| ITCC               | 80.0%                  | 97.3%                  | -17.3%       |                        |              |
| ITNW               | 0.0%                   |                        |              |                        |              |
| ITSC               | 77.2%                  | 81.0%                  | -3.8%        | 77.6%                  | -0.4%        |
| ITSE               | 55.1%                  | 67.6%                  | -12.5%       | 75.0%                  | -19.9%       |
| ITSW               | 80.8%                  | 71.9%                  | 8.9%         | 56.3%                  | 24.6%        |
| KINE               | 75.3%                  | 78.1%                  | -2.8%        | 73.7%                  | 1.6%         |
| LGLA               | 77.2%                  | 73.3%                  | 3.9%         | 77.4%                  | -0.2%        |
| MATH               | 57.7%                  | 62.8%                  | -5.1%        | 62.8%                  | -5.1%        |
| MCHN               | 81.0%                  | 75.5%                  | 5.5%         | 83.5%                  | -2.5%        |
| MRKG               | 90.2%                  | 80.6%                  | 9.6%         | 62.1%                  | 28.1%        |
| MRMT               | 73.3%                  | 50.0%                  | 23.3%        | 56.3%                  | 17.1%        |
| MUAP               | 78.0%                  | 76.5%                  | 1.5%         | 77.9%                  | 0.1%         |
| MUEN               | 88.2%                  |                        |              |                        |              |
| MUSI               | 80.0%                  | 84.2%                  | -4.2%        | 67.4%                  | 12.6%        |
| NDTE               | 62.5%                  |                        |              | 84.0%                  | -21.5%       |
| OSHT               | 91.3%                  |                        |              | 70.6%                  | 20.7%        |
| PFPB               | 76.1%                  | 79.3%                  | -3.2%        | 80.2%                  | -4.1%        |
| PHED               | 87.3%                  | 74.8%                  | 12.5%        | 48.1%                  | 39.2%        |
| PHIL               | 72.1%                  | 72.2%                  | -0.1%        | 79.6%                  | -7.5%        |
| PHYS               | 85.9%                  | 81.8%                  | 4.1%         | 86.4%                  | -0.5%        |
| POFI               | 79.3%                  | 80.0%                  | -0.7%        | 88.3%                  | -9.0%        |
| POFT               | 79.4%                  | 86.5%                  | -7.1%        | 83.4%                  | -4.0%        |
| PSYC               | 75.8%                  | 79.1%                  | -3.3%        | 81.9%                  | -6.1%        |
| PTAC               | 76.9%                  | 77.8%                  | -0.9%        | 81.4%                  | -4.5%        |
| RNSG               | 74.5%                  | 82.1%                  | -7.6%        | 49.5%                  | 25.1%        |
| SCIT               | 74.7%                  |                        |              | 83.7%                  | -9.0%        |
| SGNL               | 83.3%                  | 62.5%                  | 20.8%        | 60.0%                  | 23.3%        |
| SOCI               | 83.2%                  | 83.1%                  | 0.1%         | 72.1%                  | 11.1%        |
| SPAN               | 62.9%                  | 62.5%                  | 0.4%         | 64.7%                  | -1.8%        |
| SPCH               | 76.3%                  | 78.9%                  | -2.6%        | 67.6%                  | 8.7%         |
| SPNL               | 89.3%                  | 94.6%                  | -5.3%        |                        |              |
| TECA               | 91.5%                  |                        |              |                        |              |
| TECM               | 77.6%                  | 79.4%                  | -1.8%        | 80.6%                  | -3.0%        |
| VNSG               | 96.4%                  | 90.1%                  | 6.3%         | 83.7%                  | 12.7%        |
| WLDG               | 80.9%                  | 78.3%                  | 2.6%         | 75.8%                  | 5.1%         |
| <b>GRAND TOTAL</b> | <b>75.9%</b>           | <b>77.8%</b>           | <b>-1.9%</b> | <b>74.4%</b>           | <b>1.5%</b>  |

**Table 7**

Lee College - Baytown Campus  
 Spring 2003 Grade Distribution Summary  
 Developmental Education Courses

| AREA         | PERCENT COMPLETERS | TOTAL HEADCOUNT | NUMBER SECTIONS |
|--------------|--------------------|-----------------|-----------------|
| COSS         | 74.3%              | 113             | 6               |
| ENGL         | 69.8%              | 139             | 11              |
| ESOL         | 75.9%              | 29              | 4               |
| MATH         | 48.9%              | 938             | 57              |
| READ         | 69.6%              | 184             | 10              |
| <b>TOTAL</b> | <b>63.8%</b>       | <b>1,403</b>    | <b>88</b>       |



**Table 8**

Lee College - HC/LC

Spring 2003 Grade Distribution Summary

Sorted by Area

| <b>AREA</b>        | <b>AVERAGE GPA</b> | <b>PERCENT COMPLETERS</b> | <b>TOTAL HEADCOUNT</b> | <b>NUMBER SECTIONS</b> |
|--------------------|--------------------|---------------------------|------------------------|------------------------|
| ABDR               | 3.9                | 90.9%                     | 55                     | 7                      |
| ACCT               | 3.8                | 100.0%                    | 83                     | 3                      |
| ARTC               | 3.4                | 100.0%                    | 22                     | 1                      |
| AUMT               | 2.8                | 94.6%                     | 74                     | 5                      |
| BIOL               | 3.6                | 83.3%                     | 36                     | 2                      |
| BMGT               | 3.3                | 100.0%                    | 30                     | 2                      |
| BUSG               | 3.5                | 100.0%                    | 34                     | 2                      |
| BUSI               | 3.1                | 95.2%                     | 147                    | 6                      |
| CETT               | 3.5                | 100.0%                    | 114                    | 6                      |
| COSC               | 3.3                | 92.6%                     | 162                    | 9                      |
| CPMT               | 3.8                | 100.0%                    | 158                    | 8                      |
| CVOP               | 3.4                | 96.9%                     | 321                    | 22                     |
| DEMR               | 3.5                | 98.9%                     | 90                     | 6                      |
| DLBT               | 3.5                | 86.8%                     | 151                    | 19                     |
| ECON               | 3.0                | 97.2%                     | 108                    | 4                      |
| ENGL               | 3.3                | 94.7%                     | 264                    | 16                     |
| ENVR               | 3.7                | 94.1%                     | 17                     | 1                      |
| FREN               | 3.3                | 66.7%                     | 6                      | 1                      |
| GEOL               | 3.5                | 96.6%                     | 59                     | 3                      |
| GOVT               | 3.6                | 97.8%                     | 90                     | 5                      |
| HALT               | 3.8                | 95.6%                     | 182                    | 10                     |
| HART               | 3.3                | 98.4%                     | 123                    | 5                      |
| HIST               | 2.8                | 75.8%                     | 165                    | 8                      |
| HUMA               | 4.0                | 91.2%                     | 57                     | 2                      |
| ITNW               | 3.0                | 100.0%                    | 42                     | 2                      |
| ITSC               | 3.4                | 100.0%                    | 69                     | 3                      |
| ITSE               | 3.5                | 100.0%                    | 63                     | 3                      |
| ITSW               | 3.6                | 100.0%                    | 86                     | 4                      |
| MATH               | 2.5                | 93.5%                     | 107                    | 6                      |
| MCHN               | 2.6                | 86.5%                     | 52                     | 14                     |
| MUSI               | 3.7                | 94.3%                     | 35                     | 2                      |
| POFI               | 2.7                | 100.0%                    | 42                     | 2                      |
| POFT               | 3.8                | 93.8%                     | 16                     | 1                      |
| PSYC               | 3.8                | 94.9%                     | 118                    | 6                      |
| SOCI               | 3.5                | 94.0%                     | 116                    | 6                      |
| SPAN               | 3.4                | 94.9%                     | 39                     | 2                      |
| TECM               | 2.8                | 86.8%                     | 38                     | 2                      |
| WLDG               | 2.7                | 98.0%                     | 99                     | 7                      |
| <b>GRAND TOTAL</b> | <b>3.4</b>         | <b>94.7%</b>              | <b>3,470</b>           | <b>213</b>             |

**Table 9**

Lee College - HC/LC

Spring 2003 Grade Distribution Summary

Sorted by Average GPA

| <b>AREA</b>        | <b>AVERAGE GPA</b> | <b>PERCENT COMPLETERS</b> | <b>TOTAL HEADCOUNT</b> | <b>NUMBER SECTIONS</b> |
|--------------------|--------------------|---------------------------|------------------------|------------------------|
| HUMA               | 4.0                | 91.2%                     | 57                     | 2                      |
| ABDR               | 3.9                | 90.9%                     | 55                     | 7                      |
| ACCT               | 3.8                | 100.0%                    | 83                     | 3                      |
| CPMT               | 3.8                | 100.0%                    | 158                    | 8                      |
| HALT               | 3.8                | 95.6%                     | 182                    | 10                     |
| POFT               | 3.8                | 93.8%                     | 16                     | 1                      |
| PSYC               | 3.8                | 94.9%                     | 118                    | 6                      |
| ENVR               | 3.7                | 94.1%                     | 17                     | 1                      |
| MUSI               | 3.7                | 94.3%                     | 35                     | 2                      |
| BIOL               | 3.6                | 83.3%                     | 36                     | 2                      |
| GOVT               | 3.6                | 97.8%                     | 90                     | 5                      |
| ITSW               | 3.6                | 100.0%                    | 86                     | 4                      |
| BUSG               | 3.5                | 100.0%                    | 34                     | 2                      |
| CETT               | 3.5                | 100.0%                    | 114                    | 6                      |
| DEMR               | 3.5                | 98.9%                     | 90                     | 6                      |
| DLBT               | 3.5                | 86.8%                     | 151                    | 19                     |
| GEOL               | 3.5                | 96.6%                     | 59                     | 3                      |
| ITSE               | 3.5                | 100.0%                    | 63                     | 3                      |
| SOCI               | 3.5                | 94.0%                     | 116                    | 6                      |
| ARTC               | 3.4                | 100.0%                    | 22                     | 1                      |
| CVOP               | 3.4                | 96.9%                     | 321                    | 22                     |
| ITSC               | 3.4                | 100.0%                    | 69                     | 3                      |
| SPAN               | 3.4                | 94.9%                     | 39                     | 2                      |
| BMGT               | 3.3                | 100.0%                    | 30                     | 2                      |
| COSC               | 3.3                | 92.6%                     | 162                    | 9                      |
| ENGL               | 3.3                | 94.7%                     | 264                    | 16                     |
| FREN               | 3.3                | 66.7%                     | 6                      | 1                      |
| HART               | 3.3                | 98.4%                     | 123                    | 5                      |
| BUSI               | 3.1                | 95.2%                     | 147                    | 6                      |
| ECON               | 3.0                | 97.2%                     | 108                    | 4                      |
| ITNW               | 3.0                | 100.0%                    | 42                     | 2                      |
| AUMT               | 2.8                | 94.6%                     | 74                     | 5                      |
| HIST               | 2.8                | 75.8%                     | 165                    | 8                      |
| TECM               | 2.8                | 86.8%                     | 38                     | 2                      |
| POFI               | 2.7                | 100.0%                    | 42                     | 2                      |
| WLDG               | 2.7                | 98.0%                     | 99                     | 7                      |
| MCHN               | 2.6                | 86.5%                     | 52                     | 14                     |
| MATH               | 2.5                | 93.5%                     | 107                    | 6                      |
| <b>GRAND TOTAL</b> | <b>3.4</b>         | <b>94.7%</b>              | <b>3,470</b>           | <b>213</b>             |

**Table 10**

Lee College - HC/LC

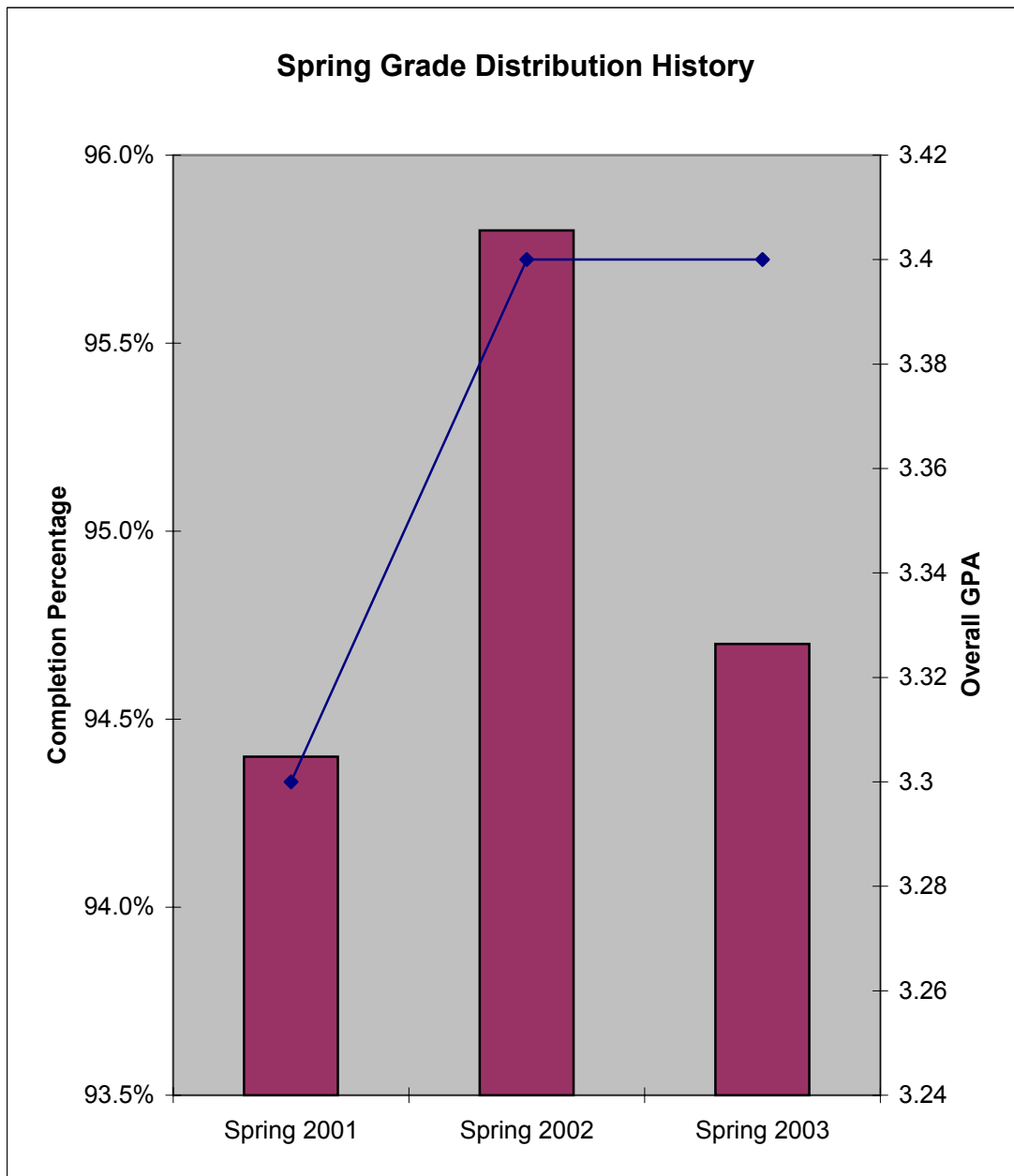
Spring 2003 Grade Distribution Summary

Sorted by Completion Percentage

| AREA               | AVERAGE GPA | PERCENT COMPLETERS | TOTAL HEADCOUNT | NUMBER SECTIONS |
|--------------------|-------------|--------------------|-----------------|-----------------|
| ACCT               | 3.8         | 100.0%             | 83              | 3               |
| CPMT               | 3.8         | 100.0%             | 158             | 8               |
| ITSW               | 3.6         | 100.0%             | 86              | 4               |
| BUSG               | 3.5         | 100.0%             | 34              | 2               |
| CETT               | 3.5         | 100.0%             | 114             | 6               |
| ITSE               | 3.5         | 100.0%             | 63              | 3               |
| ARTC               | 3.4         | 100.0%             | 22              | 1               |
| ITSC               | 3.4         | 100.0%             | 69              | 3               |
| BMGT               | 3.3         | 100.0%             | 30              | 2               |
| ITNW               | 3.0         | 100.0%             | 42              | 2               |
| POFI               | 2.7         | 100.0%             | 42              | 2               |
| DEMR               | 3.5         | 98.9%              | 90              | 6               |
| HART               | 3.3         | 98.4%              | 123             | 5               |
| WLDG               | 2.7         | 98.0%              | 99              | 7               |
| GOVT               | 3.6         | 97.8%              | 90              | 5               |
| ECON               | 3.0         | 97.2%              | 108             | 4               |
| CVOP               | 3.4         | 96.9%              | 321             | 22              |
| GEOL               | 3.5         | 96.6%              | 59              | 3               |
| HALT               | 3.8         | 95.6%              | 182             | 10              |
| BUSI               | 3.1         | 95.2%              | 147             | 6               |
| PSYC               | 3.8         | 94.9%              | 118             | 6               |
| SPAN               | 3.4         | 94.9%              | 39              | 2               |
| ENGL               | 3.3         | 94.7%              | 264             | 16              |
| AUMT               | 2.8         | 94.6%              | 74              | 5               |
| MUSI               | 3.7         | 94.3%              | 35              | 2               |
| ENVR               | 3.7         | 94.1%              | 17              | 1               |
| SOCI               | 3.5         | 94.0%              | 116             | 6               |
| POFT               | 3.8         | 93.8%              | 16              | 1               |
| MATH               | 2.5         | 93.5%              | 107             | 6               |
| COSC               | 3.3         | 92.6%              | 162             | 9               |
| HUMA               | 4.0         | 91.2%              | 57              | 2               |
| ABDR               | 3.9         | 90.9%              | 55              | 7               |
| DLBT               | 3.5         | 86.8%              | 151             | 19              |
| TECM               | 2.8         | 86.8%              | 38              | 2               |
| MCHN               | 2.6         | 86.5%              | 52              | 14              |
| BIOL               | 3.6         | 83.3%              | 36              | 2               |
| HIST               | 2.8         | 75.8%              | 165             | 8               |
| FREN               | 3.3         | 66.7%              | 6               | 1               |
| <b>GRAND TOTAL</b> | <b>3.4</b>  | <b>94.7%</b>       | <b>3,470</b>    | <b>213</b>      |

**Table 11**  
**Lee College - HC/LC**  
**Spring Grade Distribution History Comparison**

|                    | <b>Completion Percentage</b> | <b>GPA</b> |
|--------------------|------------------------------|------------|
| <b>Spring 2001</b> | 94.4%                        | 3.3        |
| <b>Spring 2002</b> | 95.8%                        | 3.4        |
| <b>Spring 2003</b> | 94.7%                        | 3.4        |



**Table 12**

Lee College - HC/LC

Spring 2003 Grade Distribution Summary

Spring GPA History

| Area               | Spring 2003<br>Average GPA | Spring 2002<br>Average GPA | 1 Yr. Change | Spring 2001<br>Average GPA | 2 Yr. Change |
|--------------------|----------------------------|----------------------------|--------------|----------------------------|--------------|
| ABDR               | 3.9                        | 3.6                        | 0.3          | 3.9                        | 0.0          |
| ACCT               | 3.8                        | 3.3                        | 0.5          | 3.0                        | 0.8          |
| ARTS               |                            |                            |              | 2.5                        |              |
| ARTC               | 3.4                        |                            |              |                            |              |
| AUMT               | 2.8                        | 2.7                        | 0.1          | 3.3                        | -0.5         |
| BIOL               | 3.6                        | 3.3                        | 0.3          | 3.4                        | 0.2          |
| BMGT               | 3.3                        | 3.1                        | 0.2          | 3.3                        | 0.0          |
| BUSG               | 3.5                        | 3.3                        | 0.2          | 3.5                        | 0.0          |
| BUSI               | 3.1                        | 3.7                        | -0.6         | 3.0                        | 0.1          |
| CETT               | 3.5                        | 3.5                        | 0.0          | 3.5                        | 0.0          |
| COSC               | 3.3                        | 3.3                        | 0.0          | 3.3                        | 0.0          |
| CPMT               | 3.8                        | 3.9                        | -0.1         | 3.8                        | 0.0          |
| CVOP               | 3.4                        | 3.4                        | 0.0          | 3.5                        | -0.1         |
| DEMR               | 3.5                        | 3.6                        | -0.1         | 3.3                        | 0.2          |
| DLBT               | 3.5                        | 3.4                        | 0.1          |                            |              |
| ECON               | 3.0                        | 3.1                        | -0.1         | 2.8                        | 0.2          |
| ENGL               | 3.3                        | 3.1                        | 0.2          | 3.1                        | 0.2          |
| ENVR               | 3.7                        | 3.8                        | -0.1         |                            |              |
| FREN               | 3.3                        |                            |              |                            |              |
| GEOL               | 3.5                        | 3.6                        | -0.1         | 3.4                        | 0.1          |
| GOVT               | 3.6                        | 3.3                        | 0.3          | 3.4                        | 0.2          |
| GRPH               |                            | 3.8                        |              | 4.0                        |              |
| HALT               | 3.8                        | 3.7                        | 0.1          | 3.5                        | 0.3          |
| HART               | 3.3                        | 3.4                        | -0.1         | 3.5                        | -0.2         |
| HIST               | 2.8                        | 3.1                        | -0.3         | 2.8                        | 0.0          |
| HUMA               | 4.0                        | 3.8                        | 0.2          | 3.4                        | 0.6          |
| IMED               |                            | 3.4                        |              |                            |              |
| INMT               |                            | 3.0                        |              |                            |              |
| ITNW               | 3.0                        | 3.0                        | 0.0          | 3.3                        | -0.3         |
| ITSC               | 3.4                        | 3.6                        | -0.2         | 3.4                        | 0.0          |
| ITSE               | 3.5                        | 3.4                        | 0.1          | 3.9                        | -0.4         |
| ITSW               | 3.6                        | 3.6                        | 0.0          | 3.7                        | -0.1         |
| MATH               | 2.5                        | 2.2                        | 0.3          | 2.1                        | 0.4          |
| MCHN               | 2.6                        | 3.1                        | -0.5         | 3.7                        | -1.1         |
| MUSI               | 3.7                        | 3.6                        | 0.1          |                            |              |
| POFI               | 2.7                        | 3.5                        | -0.8         | 3.2                        | -0.5         |
| POFT               | 3.8                        | 3.7                        | 0.1          | 3.6                        | 0.2          |
| PSYC               | 3.8                        | 3.2                        | 0.6          | 3.5                        | 0.3          |
| SOCI               | 3.5                        | 3.6                        | -0.1         | 3.3                        | 0.2          |
| SPAN               | 3.4                        | 3.8                        | -0.4         | 3.4                        | 0.0          |
| SPCH               |                            | 2.7                        |              | 2.7                        |              |
| TECM               | 2.8                        | 2.9                        | -0.1         | 2.9                        | -0.1         |
| UPHL               |                            |                            |              | 3.0                        |              |
| WLDG               | 2.7                        | 2.9                        | -0.2         | 2.9                        | -0.2         |
| <b>GRAND TOTAL</b> | <b>3.4</b>                 | <b>3.4</b>                 | <b>0.0</b>   | <b>3.3</b>                 | <b>0.1</b>   |

**Table 13**

Lee College - HC/LC

Spring 2003 Grade Distribution Summary

Spring Completion History

| Area               | Spring 2003<br>Completers | Spring 2002<br>Completers | 1 Yr. Change | Spring 2001<br>Completers | 2 Yr. Change |
|--------------------|---------------------------|---------------------------|--------------|---------------------------|--------------|
| ABDR               | 90.9%                     | 100.0%                    | -9.1%        | 97.0%                     | -6.1%        |
| ACCT               | 100.0%                    | 95.2%                     | 4.8%         | 96.8%                     | 3.2%         |
| ARTS               |                           |                           |              | 88.6%                     |              |
| ARTC               | 100.0%                    |                           |              |                           |              |
| AUMT               | 94.6%                     | 96.8%                     | -2.2%        | 96.6%                     | -2.0%        |
| BIOL               | 83.3%                     | 95.2%                     | -11.9%       | 95.7%                     | -12.4%       |
| BMGT               | 100.0%                    | 81.3%                     | 18.7%        | 93.2%                     | 6.8%         |
| BUSG               | 100.0%                    | 95.5%                     | 4.5%         | 100.0%                    | 0.0%         |
| BUSI               | 95.2%                     | 97.2%                     | -2.0%        | 100.0%                    | -4.8%        |
| CETT               | 100.0%                    | 95.1%                     | 4.9%         | 98.2%                     | 1.8%         |
| COSC               | 92.6%                     | 94.6%                     | -2.0%        | 96.9%                     | -4.3%        |
| CPMT               | 100.0%                    | 100.0%                    | 0.0%         | 95.9%                     | 4.1%         |
| CVOP               | 96.9%                     | 100.0%                    | -3.1%        | 98.2%                     | -1.3%        |
| DEMR               | 98.9%                     | 98.9%                     | 0.0%         | 100.0%                    | -1.1%        |
| DLBT               | 86.8%                     | 97.4%                     | -10.6%       |                           |              |
| ECON               | 97.2%                     | 94.9%                     | 2.3%         | 96.2%                     | 1.0%         |
| ENGL               | 94.7%                     | 95.0%                     | -0.3%        | 93.6%                     | 1.1%         |
| ENVR               | 94.1%                     | 95.0%                     | -0.9%        |                           |              |
| FREN               | 66.7%                     |                           |              |                           |              |
| GEOL               | 96.6%                     | 97.0%                     | -0.4%        | 96.8%                     | -0.2%        |
| GOVT               | 97.8%                     | 95.3%                     | 2.5%         | 95.7%                     | 2.1%         |
| GRPH               |                           | 95.7%                     |              | 100.0%                    |              |
| HALT               | 95.6%                     | 91.4%                     | 4.2%         | 98.8%                     | -3.2%        |
| HART               | 98.4%                     | 100.0%                    | -1.6%        | 89.4%                     | 9.0%         |
| HIST               | 75.8%                     | 89.3%                     | -13.5%       | 85.7%                     | -9.9%        |
| HUMA               | 91.2%                     | 97.8%                     | -6.6%        | 93.3%                     | -2.1%        |
| IMED               |                           | 94.4%                     |              |                           |              |
| INMT               |                           | 88.9%                     |              |                           |              |
| ITNW               | 100.0%                    | 100.0%                    | 0.0%         | 96.9%                     | 3.1%         |
| ITSC               | 100.0%                    | 96.4%                     | 3.6%         | 98.6%                     | 1.4%         |
| ITSE               | 100.0%                    | 97.7%                     | 2.3%         | 100.0%                    | 0.0%         |
| ITSW               | 100.0%                    | 97.8%                     | 2.2%         | 96.5%                     | 3.5%         |
| MATH               | 93.5%                     | 92.3%                     | 1.2%         | 68.2%                     | 25.3%        |
| MCHN               | 86.5%                     | 92.9%                     | -6.4%        | 98.2%                     | -11.7%       |
| MUSI               | 94.3%                     | 98.0%                     | -3.7%        |                           |              |
| POFI               | 100.0%                    | 100.0%                    | 0.0%         | 94.7%                     | 5.3%         |
| POFT               | 93.8%                     | 95.9%                     | -2.1%        | 97.2%                     | -3.4%        |
| PSYC               | 94.9%                     | 91.8%                     | 3.1%         | 90.9%                     | 4.0%         |
| SOCI               | 94.0%                     | 94.2%                     | -0.2%        | 93.8%                     | 0.2%         |
| SPAN               | 94.9%                     | 97.8%                     | -2.9%        | 95.9%                     | -1.0%        |
| SPCH               |                           | 89.9%                     |              | 92.1%                     |              |
| TECM               | 86.8%                     | 96.2%                     | -9.4%        | 100.0%                    | -13.2%       |
| UPHL               |                           |                           |              | 87.1%                     |              |
| WLDG               | 98.0%                     | 97.4%                     | 0.6%         | 88.2%                     | 9.8%         |
| <b>GRAND TOTAL</b> | <b>94.7%</b>              | <b>95.8%</b>              | <b>-1.1%</b> | <b>94.4%</b>              | <b>0.3%</b>  |

**Table 14**  
**Lee College - HC/LC**  
**Spring 2003 Grade Distribution Summary**  
**Developmental Education Courses**

| AREA         | PERCENT COMPLETERS | TOTAL HEADCOUNT | NUMBER SECTIONS |
|--------------|--------------------|-----------------|-----------------|
| ENGL         | 97.3%              | 37              | 10              |
| MATH         | 92.3%              | 287             | 32              |
| READ         | 100.0%             | 27              | 6               |
| <b>TOTAL</b> | <b>93.4%</b>       | <b>351</b>      | <b>48</b>       |

