

Lee



College

Office of Institutional Research

Grade Distribution Report
Summer I 2003

Prepared:
November, 2003

Summer I 2003 Grade Distribution Report

The Summer I 2003 Grade Distribution Report contains GPA and Completion Percentage data reported by Subject Area. The Summer I 2003 data are compared with Summer I 2002 and Summer I 2001.

The data in this report are summarized from detailed class grade reports produced by the Office of Institutional research. These detailed reports are provided to the President, Deans, and Division Chairs. Faculty members may request detailed information from the Chair or from the Office of Institutional Research.

Highlights of the Report

- ⇒ Overall GPA for the Baytown Campus (all students excluding HC/LC) was 3.1, the same as Summer I, 2002, down from 3.3 in 2001.
- ⇒ Overall percentage of students completing non-developmental classes for the Baytown Campus was 81.1% for Summer I 2003, down 1.9 percentage points from Summer I 2002 (83.0%), and down by 2.6 percentage points from Summer I 2001 (83.7%).
- ⇒ Overall percentage of students completing developmental classes for the Baytown campus was 77.7%.
- ⇒ Overall GPA for HC/LC was 3.2, down from Summer I 2002 (3.4), and from Summer I 2001, when it was 3.3.
- ⇒ Overall percentage of students completing non-developmental classes for the HC/LC campus was 94.8%, up by 0.6 percentage points from Summer I 2002 (94.2%), but down by 1.6 percentage points from Summer I 2001 (96.4%).
- ⇒ Overall percentage of students completing developmental classes for the HC/LC campus was 94.8%.

Table Guide

Table	Contents	Site
Table 1	Area Grade Summary By Subject Area	Baytown
Table 2	Area Grade Summary By GPA	Baytown
Table 3	Area Grade Summary By Completion Percentage	Baytown
Table 4	3 Year History Chart - GPA and Completion Percentage	Baytown
Table 5	Developmental Education Completion Percentage By Area	Baytown
Table 6	Area Grade Summary By Subject Area	Huntsville
Table 7	Area Grade Summary By GPA	Huntsville
Table 8	Area Grade Summary By Completion Percentage	Huntsville
Table 9	3 Year History Chart - GPA and Completion Percentage	Huntsville
Table 10	Developmental Education Completion Percentage By Area	Huntsville

Table 1
Lee College - Baytown Campus
Summer I 2003 Grade Distribution Summary
Sorted by Area

AREA	AVERAGE GPA	PERCENT COMPLETERS	TOTAL HEADCOUNT	NUMBER SECTIONS
ACCT	2.5	80.9%	47	2
ACNT	2.0	100.0%	2	1
AIRP	3.5	79.2%	77	7
ARCH	3.6	81.8%	11	1
ARTS	3.4	85.7%	56	11
BCIS	3.3	66.7%	18	1
BIOL	2.9	64.6%	274	13
BMGT	3.3	85.5%	62	7
BUSG	4.0	100.0%	1	1
BUSI	3.1	93.8%	48	4
CHEM	3.4	84.1%	44	3
CNBT	2.7	80.0%	20	1
COMM	4.0	100.0%	1	1
COSC	3.0	83.8%	74	6
CPMT	3.2	83.3%	36	3
CRIJ	3.3	87.5%	16	4
CSME	2.6	81.0%	105	18
DAAC	4.0	75.0%	4	2
DFTG	3.0	78.9%	19	3
DRAM	3.7	93.9%	33	2
ECON	3.0	77.1%	48	4
EDUC	3.5	87.5%	16	1
ELPT	3.4	75.0%	92	5
EMSP	2.5	71.3%	87	9
ENGL	2.5	85.2%	291	20
GEOL	2.4	52.6%	19	1
GOVT	2.8	89.5%	209	9
HIST	2.8	73.2%	142	11
HITT	3.0	74.5%	55	5
HRPO	3.1	82.4%	17	2
HUMA	2.5	76.4%	55	4
HYDR	4.0	100.0%	3	1
INTC	2.9	90.4%	73	4
ITCC	3.3	72.7%	33	3
ITSC	3.4	94.0%	100	5
ITSW	0.0	0.0%	1	1
KINE	3.6	66.3%	184	14
LGLA	3.6	98.4%	61	5
MATH	2.4	64.6%	82	7
MCHN	3.8	88.9%	18	1
MRKG	4.0	100.0%	1	1
MRMT	3.0	100.0%	1	1
MUSI	3.4	96.5%	57	8
PFPB	3.3	83.1%	71	6
PHED	3.2	71.1%	266	12
PHIL	2.8	93.3%	15	1
PHYS	3.7	71.4%	21	1
POFI	2.7	95.0%	20	1
POFT	3.4	90.5%	95	8
PSYC	2.5	91.6%	119	6
PTAC	3.1	72.7%	172	10
RNSG	2.3	66.3%	323	16
SCIT	2.8	92.0%	25	2
SOCI	2.9	95.0%	20	1
SPAN	3.4	57.5%	40	3
SPCH	3.3	88.2%	127	7
SPNL	3.9	96.2%	26	1
TECA	3.7	96.4%	28	3
TECM	3.3	88.4%	43	4
VNSG	4.0	100.0%	464	36
WLDG	3.4	81.5%	173	15
Total	3.1	81.1%	4,641	346

Table 2
Lee College - Baytown Campus
Summer I 2003 Grade Distribution Summary
Sorted by Average GPA

AREA	AVERAGE GPA	PERCENT COMPLETERS	TOTAL HEADCOUNT	NUMBER SECTIONS
BUSG	4.0	100.0%	1	1
COMM	4.0	100.0%	1	1
DAAC	4.0	75.0%	4	2
HYDR	4.0	100.0%	3	1
MRKG	4.0	100.0%	1	1
VNSG	4.0	100.0%	464	36
SPNL	3.9	96.2%	26	1
MCHN	3.8	88.9%	18	1
DRAM	3.7	93.9%	33	2
PHYS	3.7	71.4%	21	1
TECA	3.7	96.4%	28	3
ARCH	3.6	81.8%	11	1
KINE	3.6	66.3%	184	14
LGLA	3.6	98.4%	61	5
AIRP	3.5	79.2%	77	7
EDUC	3.5	87.5%	16	1
ARTS	3.4	85.7%	56	11
CHEM	3.4	84.1%	44	3
ELPT	3.4	75.0%	92	5
ITSC	3.4	94.0%	100	5
MUSI	3.4	96.5%	57	8
POFT	3.4	90.5%	95	8
SPAN	3.4	57.5%	40	3
WLDG	3.4	81.5%	173	15
BCIS	3.3	66.7%	18	1
BMGT	3.3	85.5%	62	7
CRIJ	3.3	87.5%	16	4
ITCC	3.3	72.7%	33	3
PFPB	3.3	83.1%	71	6
SPCH	3.3	88.2%	127	7
TECM	3.3	88.4%	43	4
CPMT	3.2	83.3%	36	3
PHED	3.2	71.1%	266	12
BUSI	3.1	93.8%	48	4
HRPO	3.1	82.4%	17	2
PTAC	3.1	72.7%	172	10
COSC	3.0	83.8%	74	6
DFTG	3.0	78.9%	19	3
ECON	3.0	77.1%	48	4
HITT	3.0	74.5%	55	5
MRMT	3.0	100.0%	1	1
BIOL	2.9	64.6%	274	13
INTC	2.9	90.4%	73	4
SOCI	2.9	95.0%	20	1
GOVT	2.8	89.5%	209	9
HIST	2.8	73.2%	142	11
PHIL	2.8	93.3%	15	1
SCIT	2.8	92.0%	25	2
CNBT	2.7	80.0%	20	1
POFI	2.7	95.0%	20	1
CSME	2.6	81.0%	105	18
ACCT	2.5	80.9%	47	2
EMSP	2.5	71.3%	87	9
ENGL	2.5	85.2%	291	20
HUMA	2.5	76.4%	55	4
PSYC	2.5	91.6%	119	6
GEOG	2.4	52.6%	19	1
MATH	2.4	64.6%	82	7
RNSG	2.3	66.3%	323	16
ACNT	2.0	100.0%	2	1
ITSW	0.0	0.0%	1	1
Total	3.1	81.1%	4,641	346

Table 3
Lee College - Baytown Campus
Summer I 2003 Grade Distribution Summary
Sorted by Completion Percentage

AREA	AVERAGE GPA	PERCENT COMPLETERS	TOTAL HEADCOUNT	NUMBER SECTIONS
BUSG	4.0	100.0%	1	1
COMM	4.0	100.0%	1	1
HYDR	4.0	100.0%	3	1
MRKG	4.0	100.0%	1	1
VNSG	4.0	100.0%	464	36
MRMT	3.0	100.0%	1	1
ACNT	2.0	100.0%	2	1
LGLA	3.6	98.4%	61	5
MUSI	3.4	96.5%	57	8
TECA	3.7	96.4%	28	3
SPNL	3.9	96.2%	26	1
SOCI	2.9	95.0%	20	1
POFI	2.7	95.0%	20	1
ITSC	3.4	94.0%	100	5
DRAM	3.7	93.9%	33	2
BUSI	3.1	93.8%	48	4
PHIL	2.8	93.3%	15	1
SCIT	2.8	92.0%	25	2
PSYC	2.5	91.6%	119	6
POFT	3.4	90.5%	95	8
INTC	2.9	90.4%	73	4
GOVT	2.8	89.5%	209	9
MCHN	3.8	88.9%	18	1
TECM	3.3	88.4%	43	4
SPCH	3.3	88.2%	127	7
EDUC	3.5	87.5%	16	1
CRIJ	3.3	87.5%	16	4
ARTS	3.4	85.7%	56	11
BMGT	3.3	85.5%	62	7
ENGL	2.5	85.2%	291	20
CHEM	3.4	84.1%	44	3
COSC	3.0	83.8%	74	6
CPMT	3.2	83.3%	36	3
PFPB	3.3	83.1%	71	6
HRPO	3.1	82.4%	17	2
ARCH	3.6	81.8%	11	1
WLDG	3.4	81.5%	173	15
CSME	2.6	81.0%	105	18
ACCT	2.5	80.9%	47	2
CNBT	2.7	80.0%	20	1
AIRP	3.5	79.2%	77	7
DFTG	3.0	78.9%	19	3
ECON	3.0	77.1%	48	4
HUMA	2.5	76.4%	55	4
DAAC	4.0	75.0%	4	2
ELPT	3.4	75.0%	92	5
HITT	3.0	74.5%	55	5
HIST	2.8	73.2%	142	11
ITCC	3.3	72.7%	33	3
PTAC	3.1	72.7%	172	10
PHYS	3.7	71.4%	21	1
EMSP	2.5	71.3%	87	9
PHED	3.2	71.1%	266	12
BCIS	3.3	66.7%	18	1
KINE	3.6	66.3%	184	14
RNSG	2.3	66.3%	323	16
BIOL	2.9	64.6%	274	13
MATH	2.4	64.6%	82	7
SPAN	3.4	57.5%	40	3
GEOL	2.4	52.6%	19	1
ITSW	0.0	0.0%	1	1
Total	3.1	81.1%	4,641	346

Table 4
Lee College - Baytown Campus
Summer I Grade Distribution History Comparison

	Completion Percentage	GPA
Summer I 2001	83.7%	3.3
Summer I 2002	83.0%	3.1
Summer I 2003	81.1%	3.1

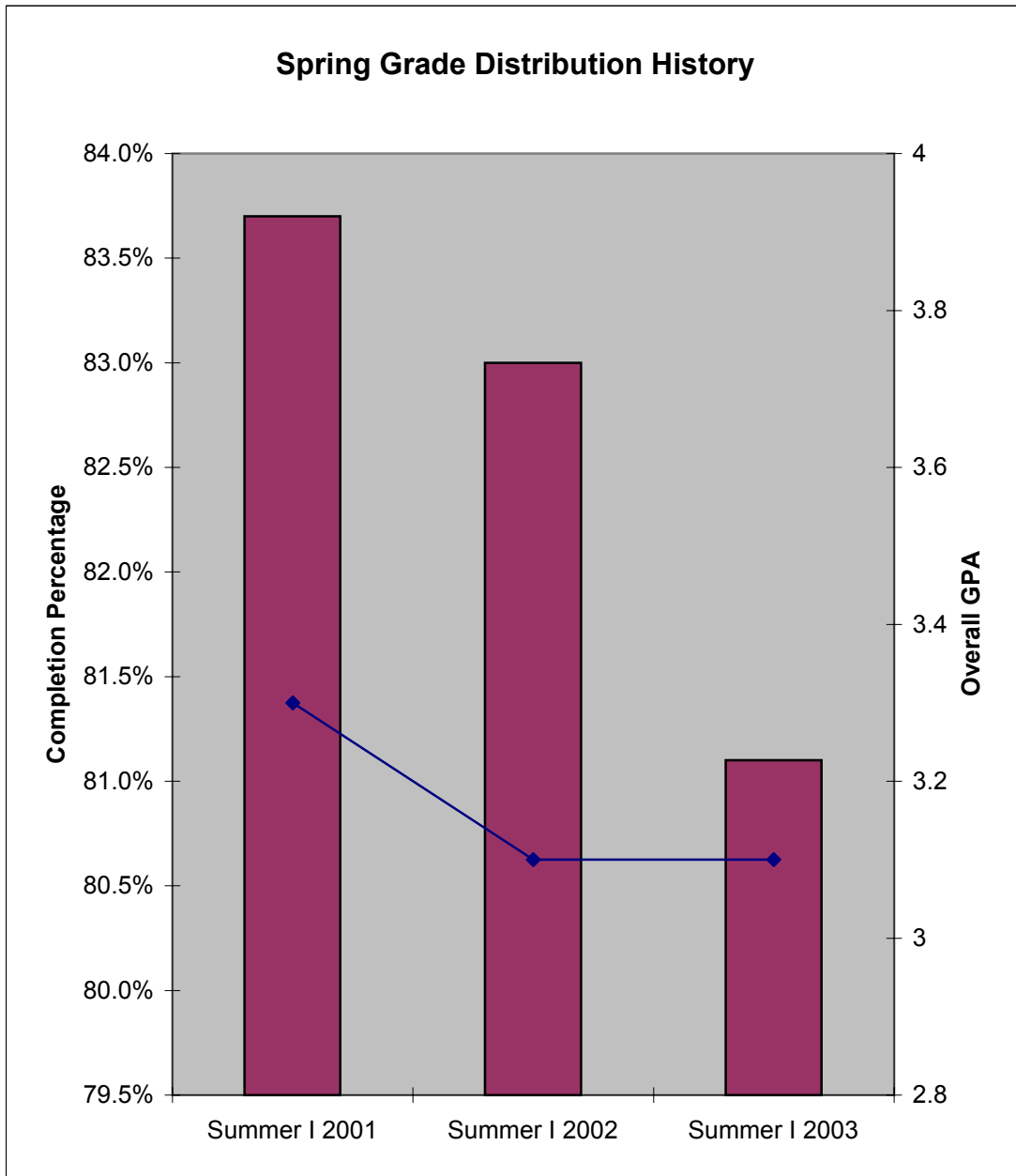


Table 5

**Lee College - Baytown Campus
Summer I 2003 Grade Distribution Summary
Developmental Education Courses**

AREA	PERCENT COMPLETERS	TOTAL HEADCOUNT	NUMBER SECTIONS
COSS	88.2%	17	1
ENGL	96.0%	25	4
MATH	66.3%	243	18
READ	74.0%	73	4
TOTAL	77.7%	358	27

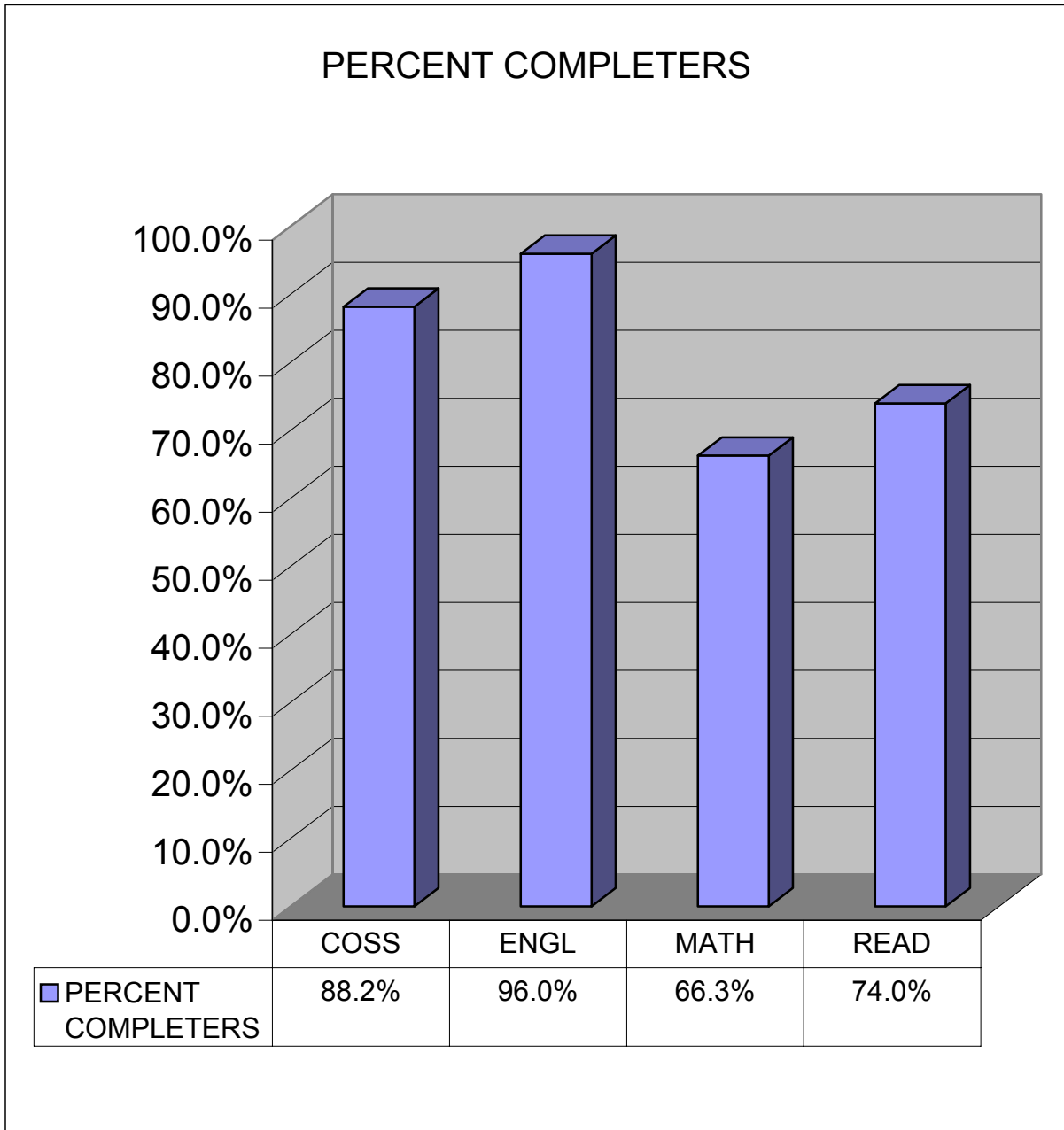


Table 6

Lee College - HC/LC

Summer I 2003 Grade Distribution Summary

Sorted by Area

AREA	AVERAGE GPA	PERCENT COMPLETERS	TOTAL HEADCOUNT	NUMBER SECTIONS
ACCT	3.0	98.2%	57	2
AUMT	3.1	92.9%	28	2
BIOL	3.3	93.8%	48	2
BUSI	3.3	95.2%	84	3
CETT	3.4	97.5%	80	4
CVOP	3.5	100.0%	78	6
DEMR	3.8	97.4%	38	2
DLBT	3.3	100.0%	39	8
ECON	2.9	95.0%	20	1
ENGL	2.9	96.4%	166	8
GEOL	3.3	97.6%	42	2
GOVT	3.5	85.7%	63	2
HALT	3.9	100.0%	76	4
HART	3.1	95.7%	46	2
HIST	2.8	87.9%	116	4
HUMA	3.5	96.3%	54	2
ITSC	3.4	88.7%	62	3
MATH	2.1	87.9%	58	3
POFI	3.0	95.5%	22	1
SOCI	3.8	100.0%	26	1
SPAN	3.2	90.9%	11	1
TECM	2.9	95.3%	64	3
WLDG	3.0	94.7%	38	2
Total	3.2	94.8%	1,316	68

Table 7

Lee College - HC/LC

Summer I 2003 Grade Distribution Summary

Sorted by Average GPA

AREA	AVERAGE GPA	PERCENT COMPLETERS	TOTAL HEADCOUNT	NUMBER SECTIONS
HALT	3.9	100.0%	76	4
DEMR	3.8	97.4%	38	2
SOCI	3.8	100.0%	26	1
CVOP	3.5	100.0%	78	6
GOVT	3.5	85.7%	63	2
HUMA	3.5	96.3%	54	2
CETT	3.4	97.5%	80	4
ITSC	3.4	88.7%	62	3
BIOL	3.3	93.8%	48	2
BUSI	3.3	95.2%	84	3
DLBT	3.3	100.0%	39	8
GEOL	3.3	97.6%	42	2
SPAN	3.2	90.9%	11	1
AUMT	3.1	92.9%	28	2
HART	3.1	95.7%	46	2
ACCT	3.0	98.2%	57	2
POFI	3.0	95.5%	22	1
WLDG	3.0	94.7%	38	2
ECON	2.9	95.0%	20	1
ENGL	2.9	96.4%	166	8
TECM	2.9	95.3%	64	3
HIST	2.8	87.9%	116	4
MATH	2.1	87.9%	58	3
Total	3.2	94.8%	1,316	40

Table 8

Lee College - HC/LC

Summer I 2003 Grade Distribution Summary

Sorted by Completion Percentage

AREA	AVERAGE GPA	PERCENT COMPLETERS	TOTAL HEADCOUNT	NUMBER SECTIONS
HALT	3.9	100.0%	76	4
SOCI	3.8	100.0%	26	1
CVOP	3.5	100.0%	78	6
DLBT	3.3	100.0%	39	8
ACCT	3.0	98.2%	57	2
GEOL	3.3	97.6%	42	2
CETT	3.4	97.5%	80	4
DEMR	3.8	97.4%	38	2
ENGL	2.9	96.4%	166	8
HUMA	3.5	96.3%	54	2
HART	3.1	95.7%	46	2
POFI	3.0	95.5%	22	1
TECM	2.9	95.3%	64	3
BUSI	3.3	95.2%	84	3
ECON	2.9	95.0%	20	1
WLDG	3.0	94.7%	38	2
BIOL	3.3	93.8%	48	2
AUMT	3.1	92.9%	28	2
SPAN	3.2	90.9%	11	1
ITSC	3.4	88.7%	62	3
HIST	2.8	87.9%	116	4
MATH	2.1	87.9%	58	3
GOVT	3.5	85.7%	63	2
Total	3.2	94.8%	1,316	21

Table 9
Lee College - HC/LC
Summer I Grade Distribution History Comparison

	Completion Percentage	GPA
Summer I 2001	96.4%	3.3
Summer I 2002	94.2%	3.4
Summer I 2003	94.8%	3.2

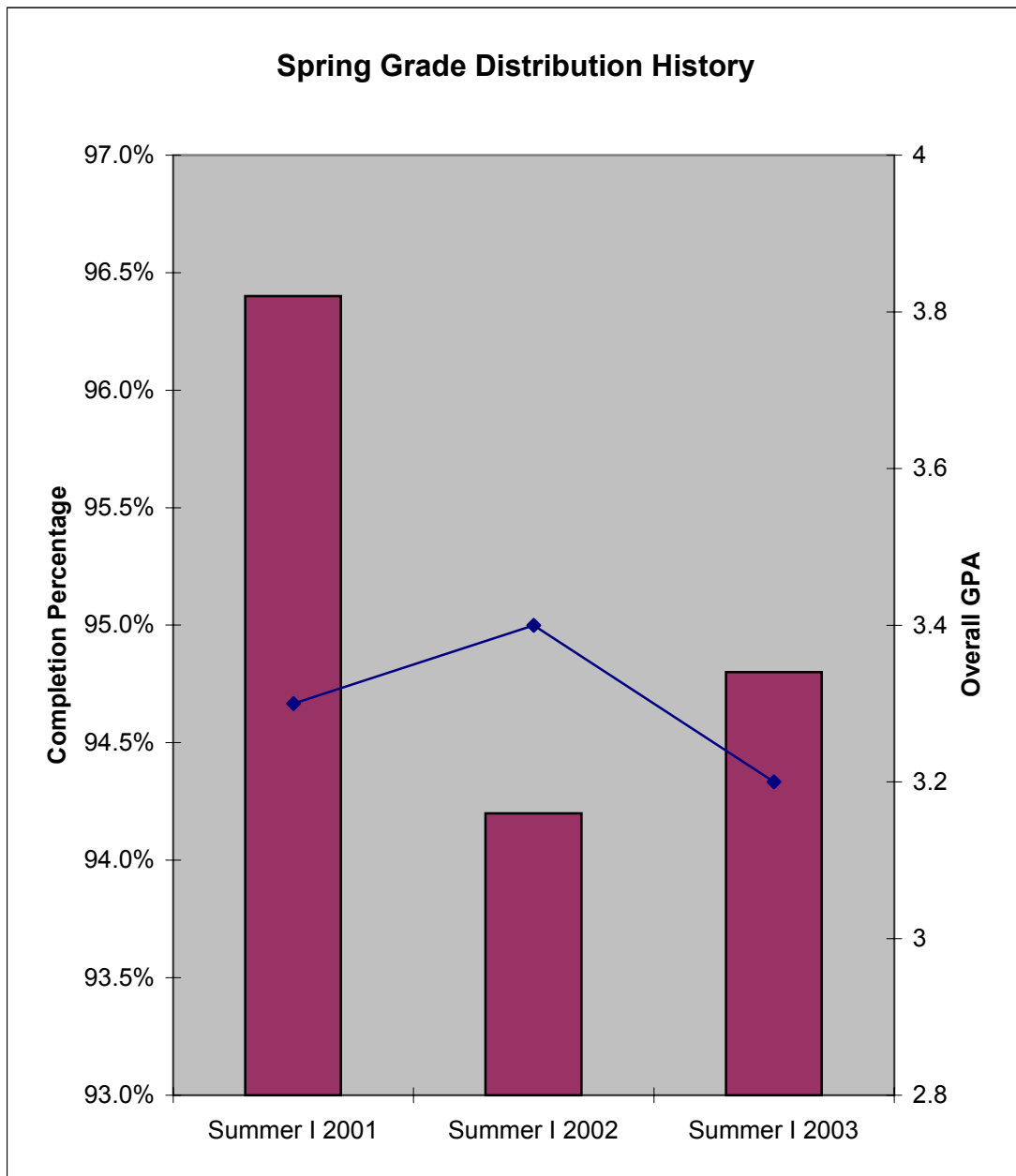


Table 10
Lee College - HC/LC
Spring 2003 Grade Distribution Summary
Developmental Education Courses

AREA	PERCENT COMPLETERS	TOTAL HEADCOUNT	NUMBER SECTIONS
ENGL	93.3%	30	9
MATH	94.0%	67	8
READ	97.3%	37	7
TOTAL	94.8%	134	24

